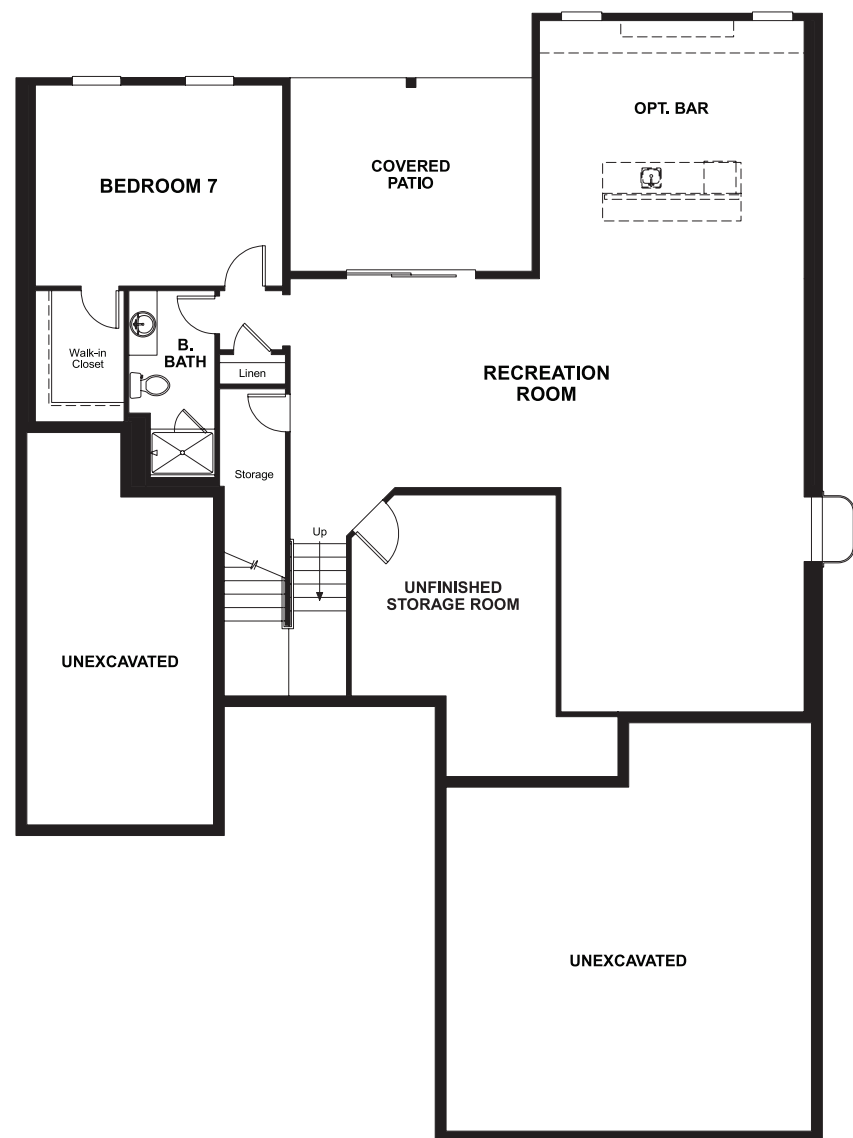


BASEMENT



OPT. FINISHED BASEMENT



ELEVATION E

ABOUT THE DALEY

A grand two-story entry welcomes guests to the inviting Daley plan. The main floor offers a study, bedroom with private bath, a great room with fireplace and a gourmet kitchen with an immense center island, walk-in pantry and adjacent dining room. You'll also appreciate the covered patio and convenient bedroom with full bath. Upstairs, enjoy a loft and a lavish master suite with a private bath and walk-in closet. Personalize this plan with a formal dining room, chef's kitchen and more.

COMMUNITY LOCATION:

Tehaleh | 13626 Overlook Drive East | Bonney Lake, WA 98391 | 253.693.4804

*This information is presented for education purposes only. The HERS index for a confirmed rating will be determined by a third-party HERS rater based on data gathered from on-site observations and, if required, testing of rated features for a home as featured, optioned, located, oriented and/or built.

+Standard new home is based on the RESNET® Reference Home definition with a HERS® index of 100 (based on the 2006 International Energy Conservation Code).

++Typical resale home is based on the U.S. Department of Energy definition with a HERS® index of 130.

^RESNET® has developed the HERS® index to indicate the comparative efficiencies of homes. It is no guarantee that energy efficiencies will be achieved.

Floor plans and renderings are conceptual drawings and may vary from actual plans and homes as built. Options and features may not be available on all homes and are subject to change without notice. Actual homes may vary from photos and/or drawings which show upgraded landscaping and may not represent the lowest-priced homes in the community. Features may include optional upgrades and may not be available on all homes. Square footage numbers are approximate and are subject to change without notice. Prices, specifications and availability subject to change without notice. ©2018 Richmond American Homes, Richmond American Homes of Washington, Inc. 1/4/2018



ELEVATION A



ELEVATION B



ELEVATION C



ELEVATION D

