

Avila at Eastwood
SEBASTIAN



Elevation A

Available elevations:



Elevation A



Elevation B



Elevation C

Approx. square feet: 2,400

Stories: 2

Bedrooms: 4

Garage: 2-car

Plan Number: S745

The Sebastian plan features a bedroom and full bath downstairs, in addition to three accommodating rooms upstairs. Other highlights include a truly expansive kitchen with optional professional features, a walk-in pantry and a large island. The kitchen also overlooks an inviting great room and dining room, each with access to the covered patio. Upstairs, a master suite boasts a roomy walk-in closet and a private bathroom with dual sinks and a separate tub and shower. Personalize further with a conservatory and a spa-like walk-in shower.

COMMUNITY LOCATION

124 Imagination Trail
Irvine, CA 92620
800-852-9714

HOME GALLERY

5171 California Avenue, Suite 110
Irvine, CA 92617
800-852-9714



COMMUNITY LOCATION

124 Imagination Trail
Irvine, CA 92620
800-852-9714

HOME GALLERY

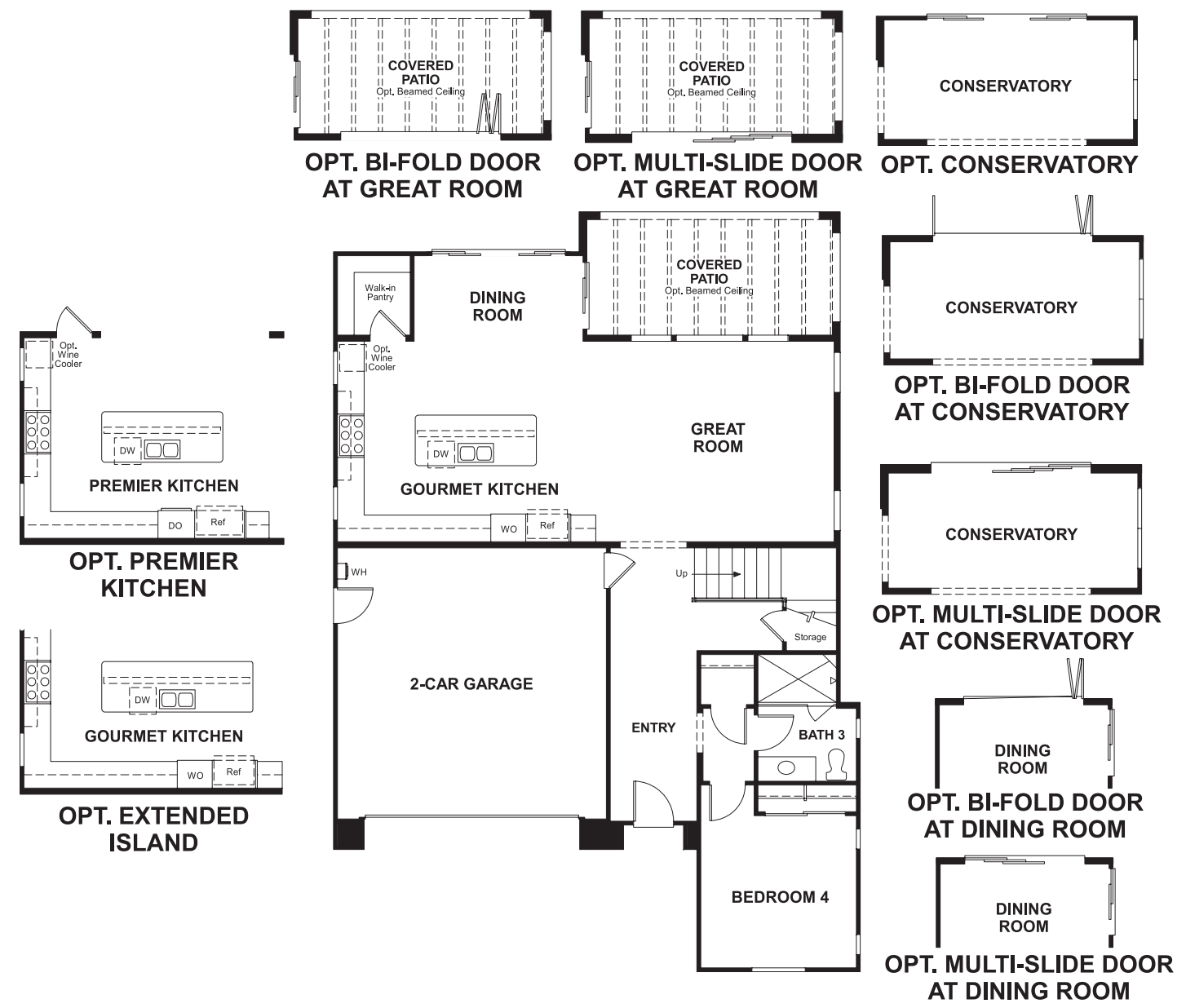
5171 California Avenue, Suite 110
Irvine, CA 92617
800-852-9714



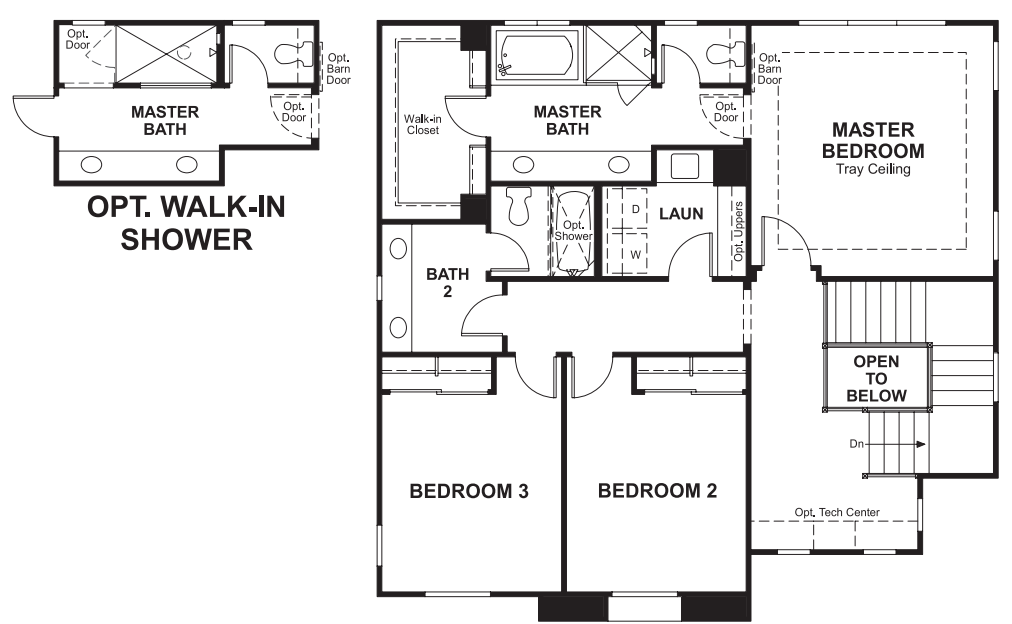
Avila at Eastwood
SEBASTIAN

Approx. square feet: 2,400
Stories: 2
Bedrooms: 4
Garage: 2-car
Plan Number: S745

Floor Plan
Main Floor



Floor Plan
Second Floor



THIS PLAN'S PROJECTED HERS® INDEX = 74*
Projected Rating Based on Plans – Field Confirmation Required

How does this floor plan rate?
Take a look: **100** = Standard new home* **130** = Typical resale home**
The lower the number, the better! Refer to the RESNET® HERS index brochure or go to www.RESNET.us for details.

What's a HERS® Index? HERS stands for Home Energy Rating System, a system created by RESNET® to measure home energy efficiency.[^]
A Projected HERS index or rating is a computer simulation performed prior to construction by a third-party HERS rater using RESNET-accredited rating software, rated feature and specification data derived from home plans, features and specifications, and other data selected or assumed by the rater. The projected HERS index is approximate and is subject to change without notice. Actual results will vary.

*This information is presented for education purposes only. The HERS index for a confirmed rating will be determined by a third-party HERS rater based on data gathered from on-site observations and, if required, testing of rated features for a home as featured, optioned, located, oriented and/or built.
+Standard new home is based on the RESNET® Reference Home definition with a HERS® index of 100 (based on the 2006 International Energy Conservation Code).
**Typical resale home is based on the U.S. Department of Energy definition with a HERS® index of 130.

[^]RESNET® has developed the HERS® index to indicate the comparative efficiencies of homes. It is no guarantee that energy efficiencies will be achieved.