

Avila at Eastwood  
**SHELBY**



**Elevation A**

**Available elevations:**



**Elevation A**



**Elevation C**



**Elevation E**



**Elevation H**

**Approx. square feet:** 2,850

**Stories:** 2

**Bedrooms:** 4 - 5

**Garage:** 2-car

**Plan Number:** S748

Main-floor highlights of the Shelby plan include a convenient downstairs bedroom with a full bath—also available as a study—an open-concept great room that flows into a spacious dining room and kitchen area, plus a relaxing covered patio. Upstairs, you'll appreciate a laundry room with storage space, an accommodating loft, two charming bedrooms and a master suite with an attached bath and dual walk-in closets.

Personalization options include a free-standing tub in the master bathroom, a conservatory, a study and an additional bedroom.

**COMMUNITY LOCATION**

124 Imagination Trail  
Irvine, CA 92620  
800-852-9714

**HOME GALLERY**

5171 California Avenue, Suite 110  
Irvine, CA 92617  
800-852-9714



**COMMUNITY LOCATION**

124 Imagination Trail  
Irvine, CA 92620  
800-852-9714

**HOME GALLERY**

5171 California Avenue, Suite 110  
Irvine, CA 92617  
800-852-9714

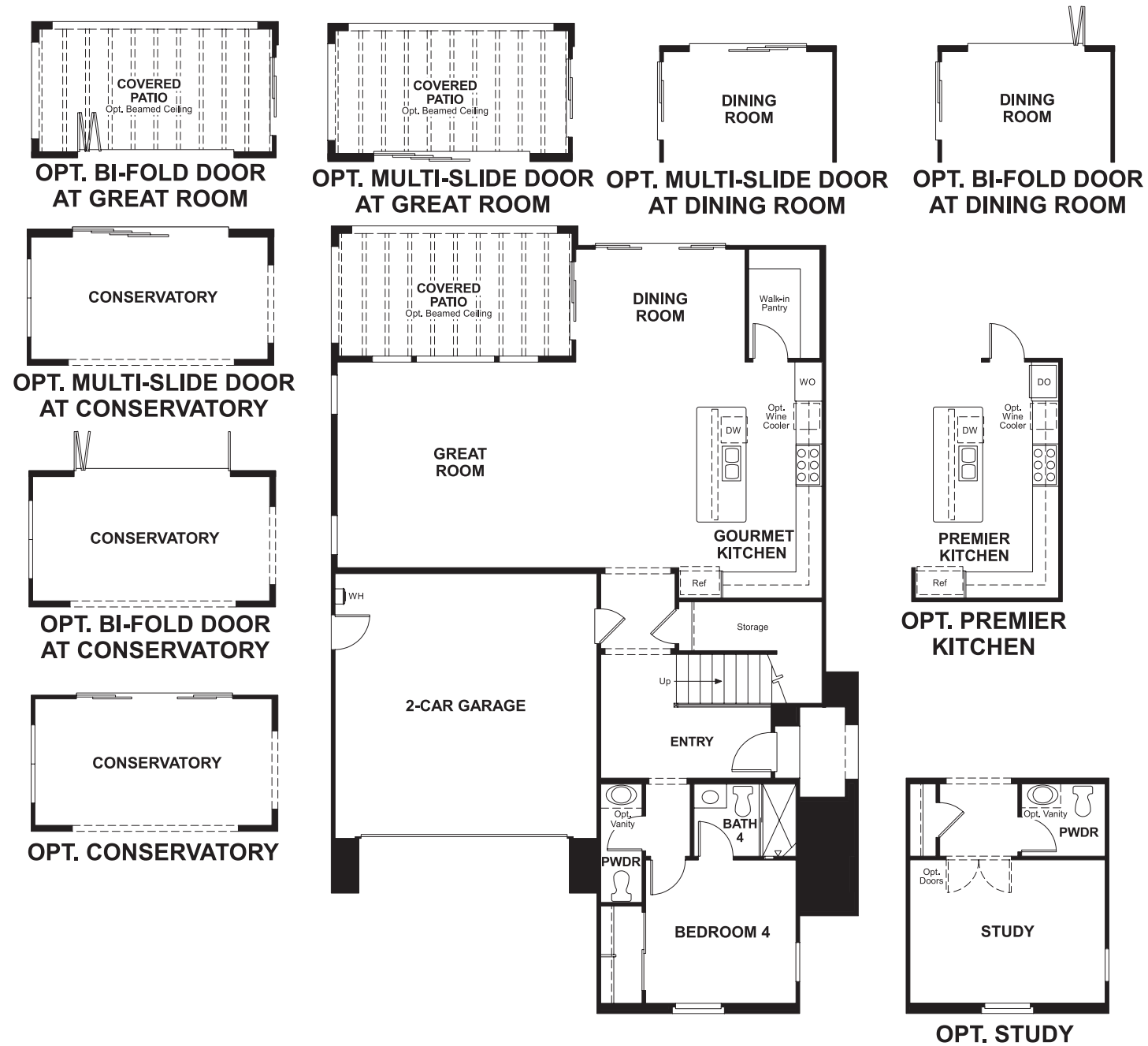


Avila at Eastwood  
**SHELBY**

**Approx. square feet:** 2,850  
**Stories:** 2  
**Bedrooms:** 4 - 5

**Garage:** 2-car  
**Plan Number:** S748

**Floor Plan**  
Main Floor



**Floor Plan**  
Second Floor



**THIS PLAN'S PROJECTED  
HERS® INDEX = 73\***  
Projected Rating Based on Plans – Field Confirmation Required

**How does this floor plan rate?**  
Take a look: **100** = Standard new home\* **130** = Typical resale home\*\*  
The lower the number, the better! Refer to the RESNET® HERS index brochure or go to [www.RESNET.us](http://www.RESNET.us) for details.

**What's a HERS® Index?** HERS stands for Home Energy Rating System, a system created by RESNET® to measure home energy efficiency.<sup>^</sup>  
A Projected HERS index or rating is a computer simulation performed prior to construction by a third-party HERS rater using RESNET-accredited rating software, rated feature and specification data derived from home plans, features and specifications, and other data selected or assumed by the rater. The projected HERS index is approximate and is subject to change without notice. Actual results will vary.

\*This information is presented for education purposes only. The HERS index for a confirmed rating will be determined by a third-party HERS rater based on data gathered from on-site observations and, if required, testing of rated features for a home as featured, optioned, located, oriented and/or built.  
+Standard new home is based on the RESNET® Reference Home definition with a HERS® index of 100 (based on the 2006 International Energy Conservation Code).  
++Typical resale home is based on the U.S. Department of Energy definition with a HERS® index of 130.

<sup>^</sup>RESNET® has developed the HERS® index to indicate the comparative efficiencies of homes. It is no guarantee that energy efficiencies will be achieved.