

Avila at Eastwood
SPENCER



Elevation B

Available elevations:



Elevation B



Elevation C



Elevation J

Approx. square feet: 2,600

Stories: 2

Bedrooms: 4 - 5

Garage: 2-car

Plan Number: S746

Visualize yourself in this two-story home. Enjoy laid-back afternoons on a covered patio with an optional beamed ceiling. Gather with friends and family in an accommodating great room. Whip up gourmet meals in a well-appointed kitchen with a convenient center island, walk-in pantry and optional professional features. You'll also appreciate a main-floor bedroom with a full bath, a versatile loft upstairs—available as an additional bedroom—plus a master suite with double sinks, a separate tub and shower, and a spacious walk-in closet. Optional conservatory available!

COMMUNITY LOCATION

124 Imagination Trail
Irvine, CA 92620
800-852-9714

HOME GALLERY

5171 California Avenue, Suite 110
Irvine, CA 92617
800-852-9714



COMMUNITY LOCATION

124 Imagination Trail
Irvine, CA 92620
800-852-9714

HOME GALLERY

5171 California Avenue, Suite 110
Irvine, CA 92617
800-852-9714

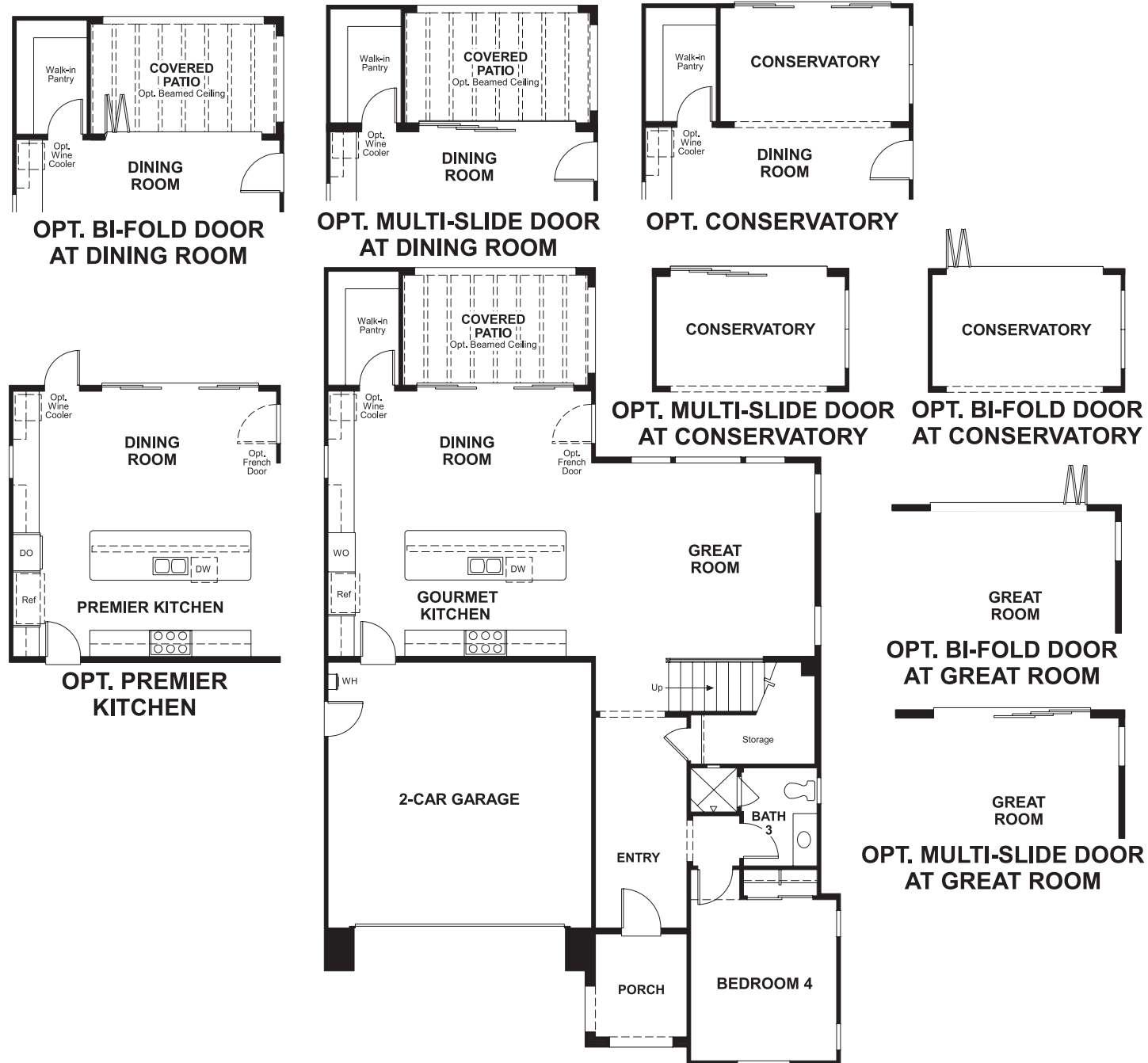


Avila at Eastwood
SPENCER

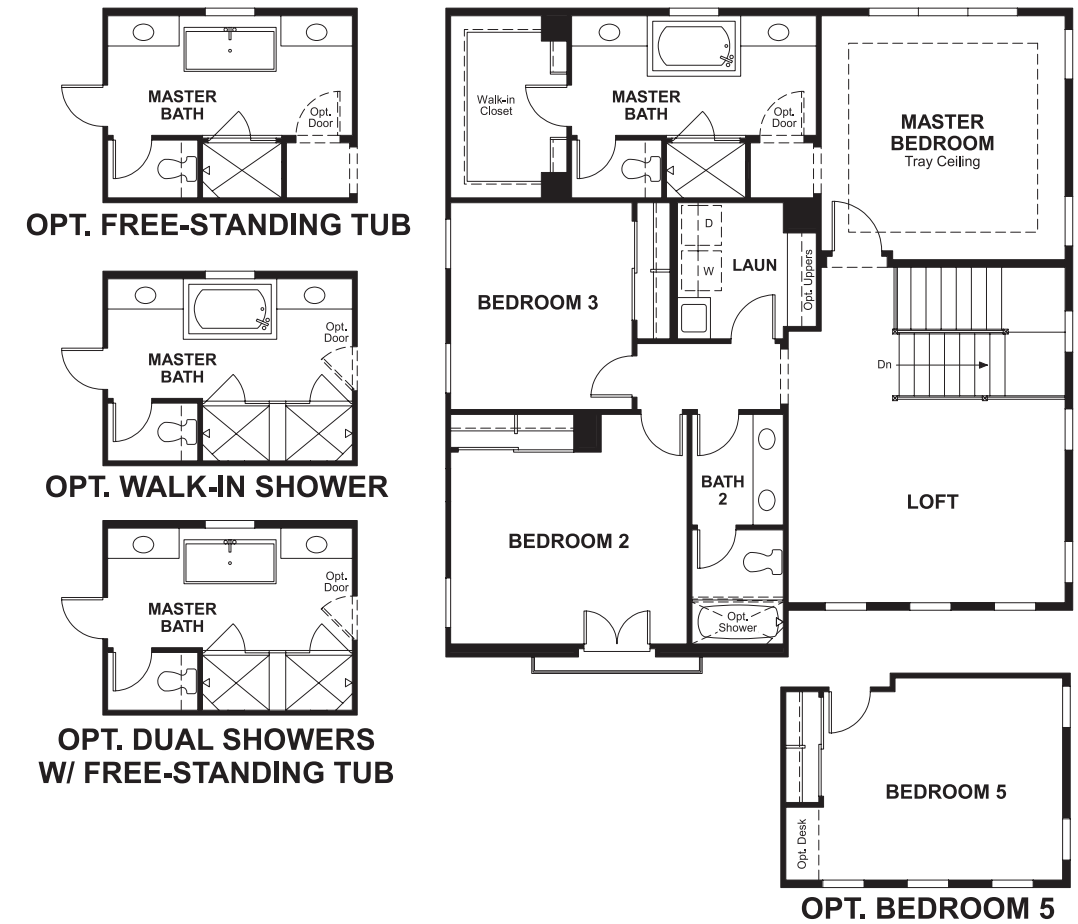
Approx. square feet: 2,600
Stories: 2
Bedrooms: 4 - 5

Garage: 2-car
Plan Number: S746

Floor Plan
Main Floor



Floor Plan
Second Floor



**THIS PLAN'S PROJECTED
HERS® INDEX = 74***
Projected Rating Based on Plans – Field Confirmation Required

How does this floor plan rate?
Take a look: **100** = Standard new home* **130** = Typical resale home**
The lower the number, the better! Refer to the RESNET® HERS index brochure or go to www.RESNET.us for details.

What's a HERS® Index? HERS stands for Home Energy Rating System, a system created by RESNET® to measure home energy efficiency.[^]
A Projected HERS index or rating is a computer simulation performed prior to construction by a third-party HERS rater using RESNET-accredited rating software, rated feature and specification data derived from home plans, features and specifications, and other data selected or assumed by the rater. The projected HERS index is approximate and is subject to change without notice. Actual results will vary.

*This information is presented for education purposes only. The HERS index for a confirmed rating will be determined by a third-party HERS rater based on data gathered from on-site observations and, if required, testing of rated features for a home as featured, optioned, located, oriented and/or built.
+Standard new home is based on the RESNET® Reference Home definition with a HERS® index of 100 (based on the 2006 International Energy Conservation Code).
++Typical resale home is based on the U.S. Department of Energy definition with a HERS® index of 130.

[^]RESNET® has developed the HERS® index to indicate the comparative efficiencies of homes. It is no guarantee that energy efficiencies will be achieved.