

# THE RUBY

Approx. 1,900sq. ft. | 1 story | 4 bedrooms | 2-car garage | Plan #FC11



ELEVATION C - SHOWN W/ OPT. STONE

## ABOUT THE RUBY

Great size 4 bedroom ranch plan. Master bedroom tucked at the back of the home for privacy with walk in shower and a grand walk in closet. Open great room with kitchen and dining flowing together all open up to a covered patio for outdoor entertaining. Kitchen includes an oversized island with spacious pantry. Entry way includes a coat closet for extra storage.



ELEVATION A



ELEVATION B

\*This information is presented for education purposes only. The HERS index for a confirmed rating will be determined by a third-party HERS rater based on data gathered from on-site observations and, if required, testing of rated features for a home as featured, optioned, located, oriented and/or built.

+Standard new home is based on the RESNET® Reference Home definition with a HERS® index of 100 (based on the 2006 International Energy Conservation Code).

++Typical resale home is based on the U.S. Department of Energy definition with a HERS® index of 130.

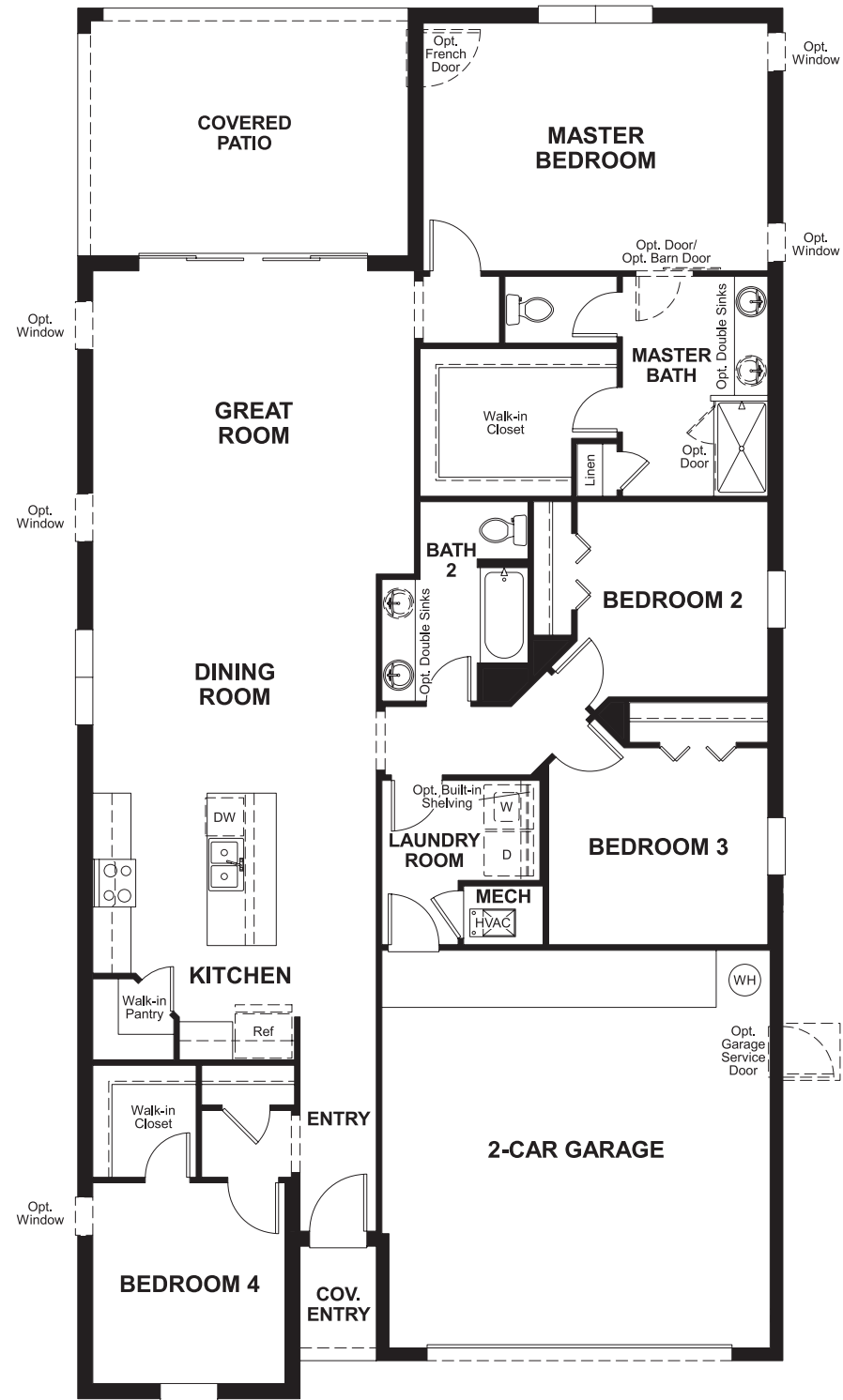
^RESNET® has developed the HERS® index to indicate the comparative efficiencies of homes. It is no guarantee that energy efficiencies will be achieved.



Floor plans and renderings are conceptual drawings and may vary from actual plans and homes as built. Options and features may not be available on all homes and are subject to change without notice. Actual homes may vary from photos and/or drawings which show upgraded landscaping and may not represent the lowest-priced homes in the community. Features may include optional upgrades and may not be available on all homes. Square footage numbers are approximate and are subject to change without notice. ©2017 Richmond American Homes, Richmond American Homes of Florida, LP, CBC1257429 12/21/2017



MAIN FLOOR



THIS PLAN'S PROJECTED  
**HERS® INDEX = 69\***  
 Projected Rating Based on Plans – Field Confirmation required

**How does this floor plan rate?**  
 Take a look: **100** = Standard new home+ **130** = Typical resale Home++  
 The lower number, the better! Refer to the RESNET® HERS index brochure or  
 go to [www.RESNET.us](http://www.RESNET.us) and [www.HERSindex.com](http://www.HERSindex.com)

**What's a HERS® Index?** HERS stands for Home Energy Rating System, a system created by RESNET® to measure home energy efficiency. ^  
 A Projected HERS index or rating is a computer simulation performed prior to construction by a third-party HERS rater using RESNET-accredited  
 rating software, rated feature and specification data derived from home plans, features and specifications, and other data selected or assumed by  
 the rater. The projected HERS index is approximate and is subject to change without notice. Actual results will vary.