

THE CROSSINGS AT BARTRAM
PEARL



APPROX. SQUARE FEET: 2,350
STORIES: 2
BEDROOMS: 4 - 5
GARAGE: 2-car
PLAN NUMBER: J913

The Pearl plan offers two stories of thoughtful living space. A spacious kitchen provides a panoramic view of the main floor—overlooking an elegant dining room and a large great room. You'll also enjoy a convenient powder room and private study located by the entryway. Upstairs, an open loft features access to a laundry room and three bedrooms, including a lavish master suite with a roomy walk-in closet and attached bath. Options include bedrooms in lieu of the loft and study.

Available elevation:



Elevation A



Elevation B



Elevation C - Shown with Opt. Stone



Elevation K



Elevation L



Elevation M

COMMUNITY LOCATION

15199 Russell Bridge Drive
 Jacksonville, FL 32258
 904-240-4968

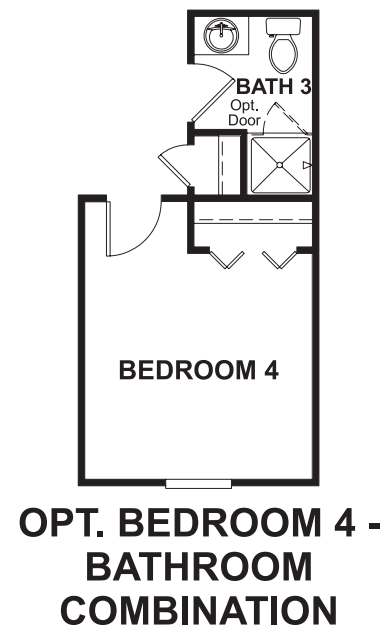
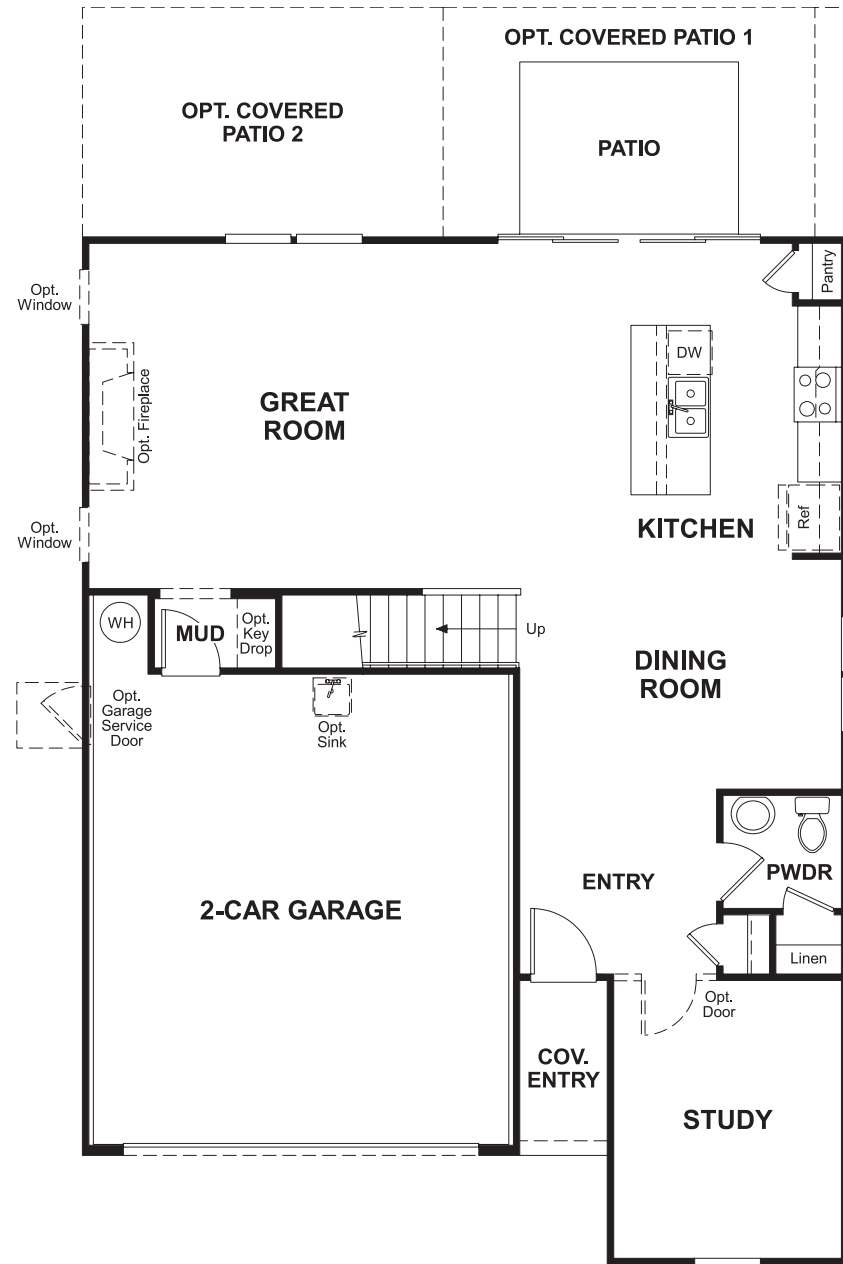
HOME GALLERY

1560 Wells Road Building A, Suite 105
 Orange Park, FL 32073
 904-541-2555

RICHMONDAMERICAN.COM/SEASONS



FLOOR PLAN
MAIN FLOOR



FLOOR PLAN
SECOND FLOOR



**THIS PLAN'S PROJECTED
HERS® INDEX = 61***
Projected Rating Based on Plans – Field Confirmation Required

How does this floor plan rate?
Take a look: **100** = Standard new home+ **130** = Typical resale home**
The lower the number, the better! Refer to the RESNET® HERS index brochure or go to www.RESNET.us for details.

What's a HERS® Index? HERS stands for Home Energy Rating System, a system created by RESNET® to measure home energy efficiency. A Projected HERS index or rating is a computer simulation performed prior to construction by a third-party HERS rater using RESNET-accredited rating software, rated feature and specification data derived from home plans, features and specifications, and other data selected or assumed by the rater. The projected HERS index is approximate and is subject to change without notice. Actual results will vary.

*This information is presented for education purposes only. The HERS index for a confirmed rating will be determined by a third-party HERS rater based on data gathered from on-site observations and, if required, testing of rated features for a home as featured, optioned, located, oriented and/or built.
+Standard new home is based on the RESNET® Reference Home definition with a HERS® index of 100 (based on the 2006 International Energy Conservation Code).
**Typical resale home is based on the U.S. Department of Energy definition with a HERS® index of 130.

^RESNET® has developed the HERS® index to indicate the comparative efficiencies of homes. It is no guarantee that energy efficiencies will be achieved.