

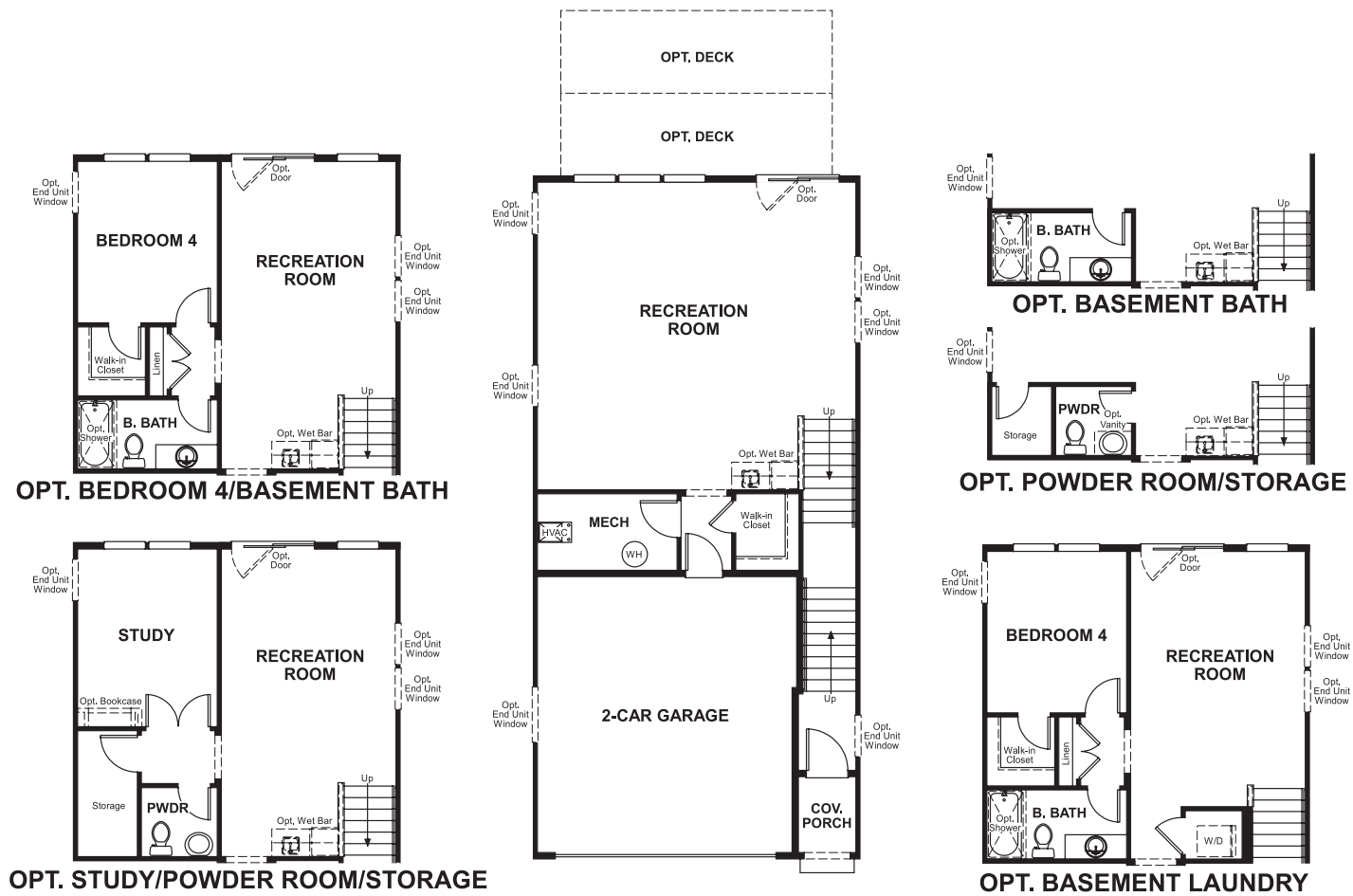
Ashburn Knolls
VIENNA

Approx. square feet: 2,850
Stories: 3
Bedrooms: 3 - 4

Garage: 2-car
Plan Number: M737

Ashburn Knolls
VIENNA

Floor Plan
Lower Floor



Elevation A / C / D / B / E / F

Available elevations:



Elevation A / C / D / B / E / F

Approx. square feet: 2,850
Stories: 3
Bedrooms: 3 - 4
Garage: 2-car
Plan Number: M737

The three-story Vienna townhome greets guests with a finished rec room off the garage. Add an optional wet bar, powder room and storage closet for extra versatility! Upstairs, the main floor offers an open dining room, kitchen and great room, which overlooks the covered patio with optional fireplace. The master suite with optional fireplace or wet bar, the laundry and two additional bedrooms are located on the top floor. Don't need three bedrooms? Choose an optional second master!

COMMUNITY LOCATION
21491 Willow Breeze Square
Ashburn, VA 20147
703-348-0025

HOME GALLERY
1139 Government Center Parkway
Fairfax, VA 22030
888-891-7349

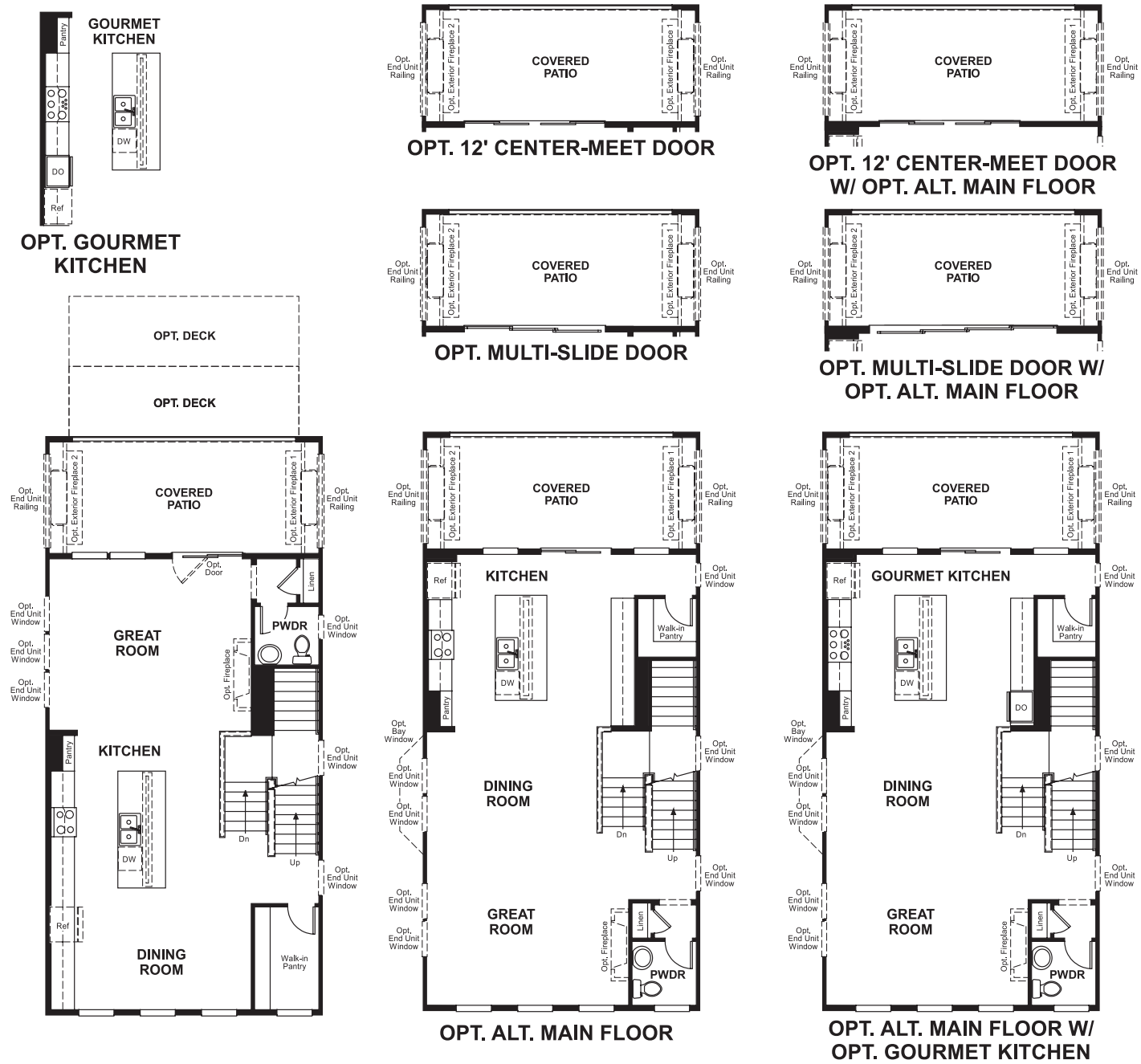


COMMUNITY LOCATION
21491 Willow Breeze Square
Ashburn, VA 20147
703-348-0025

HOME GALLERY
1139 Government Center Parkway
Fairfax, VA 22030
888-891-7349



Floor Plan
Main Floor



Floor Plan
Second Floor

