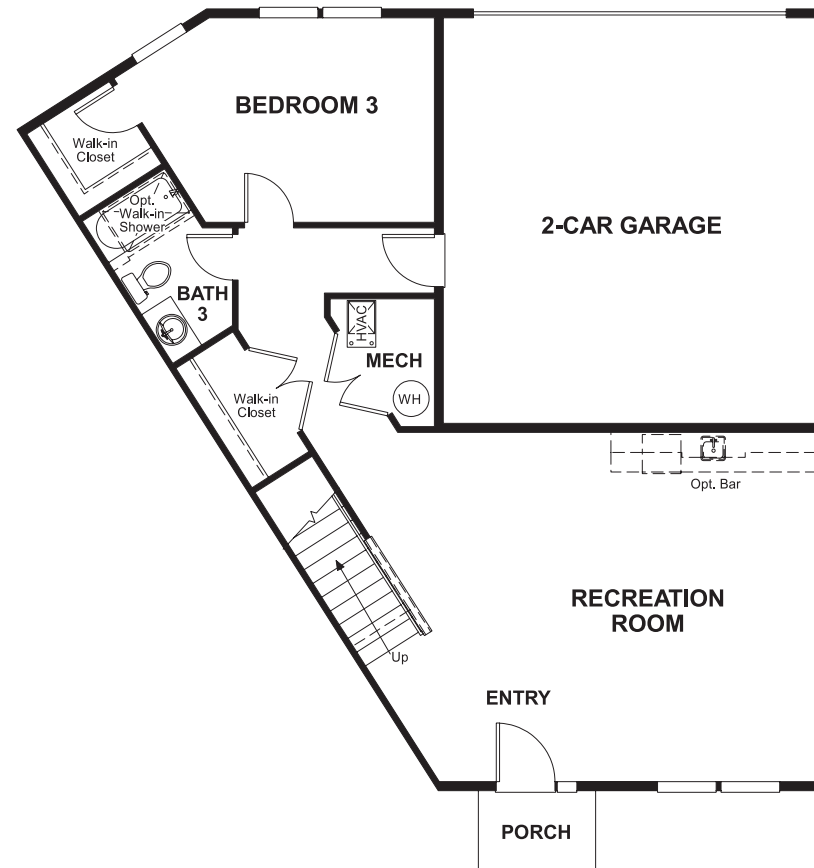


LOWER FLOOR



ELEVATION A

ABOUT THE KNIGHTLEY

Available exclusively at Madison Crescent, this three-story townhome offers a two-car garage, spacious rec room, bedroom and full bath on the lower level. Upstairs, on the main floor, you'll find an open great room, kitchen and dining area, as well as a private study, powder room, convenient laundry and large walk-in pantry. Each of the top-floor bedrooms has its own walk-in closet and full bath, and the adjacent loft has a powder room and storage closet as well. Gourmet kitchen options, additional bedrooms and deluxe bath features are available.

COMMUNITY LOCATION:

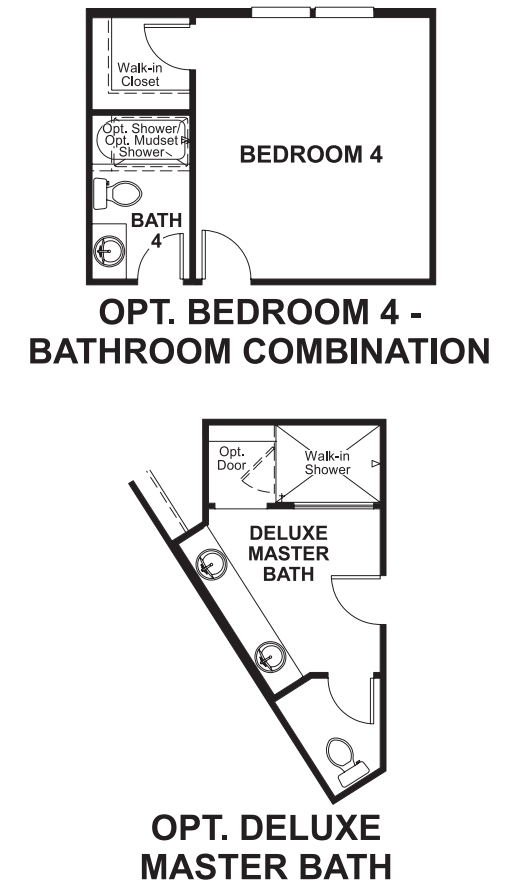
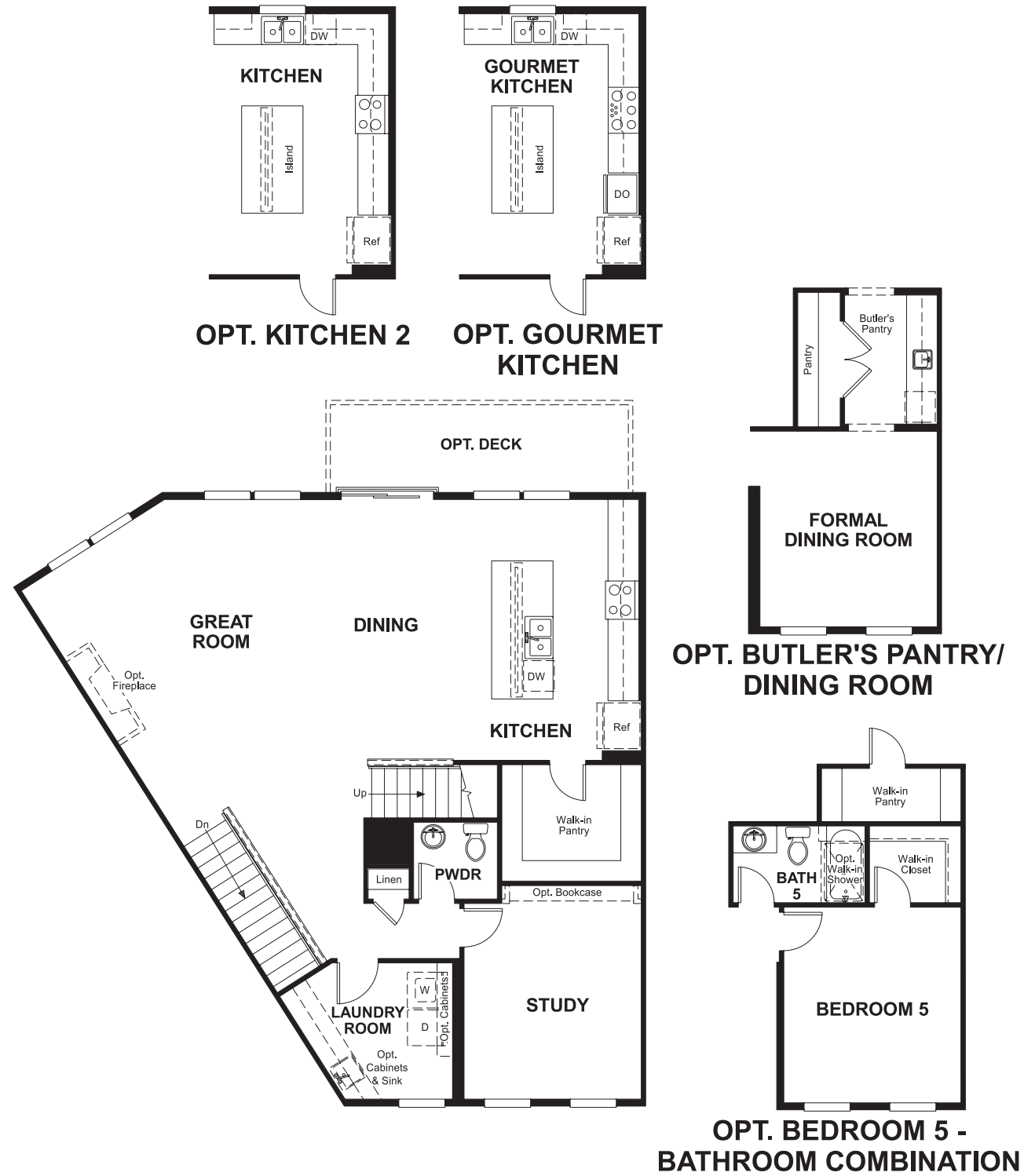
Madison Crescent | James Madison Highway & Lee Highway | Gainesville, VA 20155 | **703.348.0025**



Floor plans and renderings are conceptual drawings and may vary from actual plans and homes as built. Options and features may not be available on all homes and are subject to change without notice. Actual homes may vary from photos and/or drawings which show upgraded landscaping and may not represent the lowest-priced homes in the community. Features may include optional upgrades and may not be available on all homes. Square footage numbers are approximate and are subject to change without notice. Prices, specifications and availability subject to change without notice. ©2018 Richmond American Homes, Richmond American Homes of Virginia, Inc. 2/15/2018

MAIN FLOOR

SECOND FLOOR



Floor plans and renderings are conceptual drawings and may vary from actual plans and homes as built. Options and features may not be available on all homes and are subject to change without notice. Actual homes may vary from photos and/or drawings which show upgraded landscaping and may not represent the lowest-priced homes in the community. Features may include optional upgrades and may not be available on all homes. Square footage numbers are approximate and are subject to change without notice. Prices, specifications and availability subject to change without notice. ©2018 Richmond American Homes, Richmond American Homes of Virginia, Inc. 02/15/2018

Floor plans and renderings are conceptual drawings and may vary from actual plans and homes as built. Options and features may not be available on all homes and are subject to change without notice. Actual homes may vary from photos and/or drawings which show upgraded landscaping and may not represent the lowest-priced homes in the community. Features may include optional upgrades and may not be available on all homes. Square footage numbers are approximate and are subject to change without notice. Prices, specifications and availability subject to change without notice. ©2018 Richmond American Homes, Richmond American Homes of Virginia, Inc. 02/15/2018