

SYCAMORE FARMS  
MOONSTONE



**APPROX. SQUARE FEET: 2,630**  
**STORIES: 2**  
**BEDROOMS: 4**  
**GARAGE: 2-car**  
**PLAN NUMBER: P914**

Spacious and accommodating, the two-story Moonstone features an open-concept main floor and four charming bedrooms upstairs. Just off the entryway, you'll find a secluded study with a nearby powder room. Toward the back of the home, a great room flows into an inviting kitchen with a center island and adjacent dining room. Upstairs, a loft offers a versatile common area, and a sprawling master suite includes an attached bath and walk-in closet. If desired, opt for additional bedrooms in lieu of the study or loft. Covered patio also included!

Available elevation:



Elevation B



Elevation C



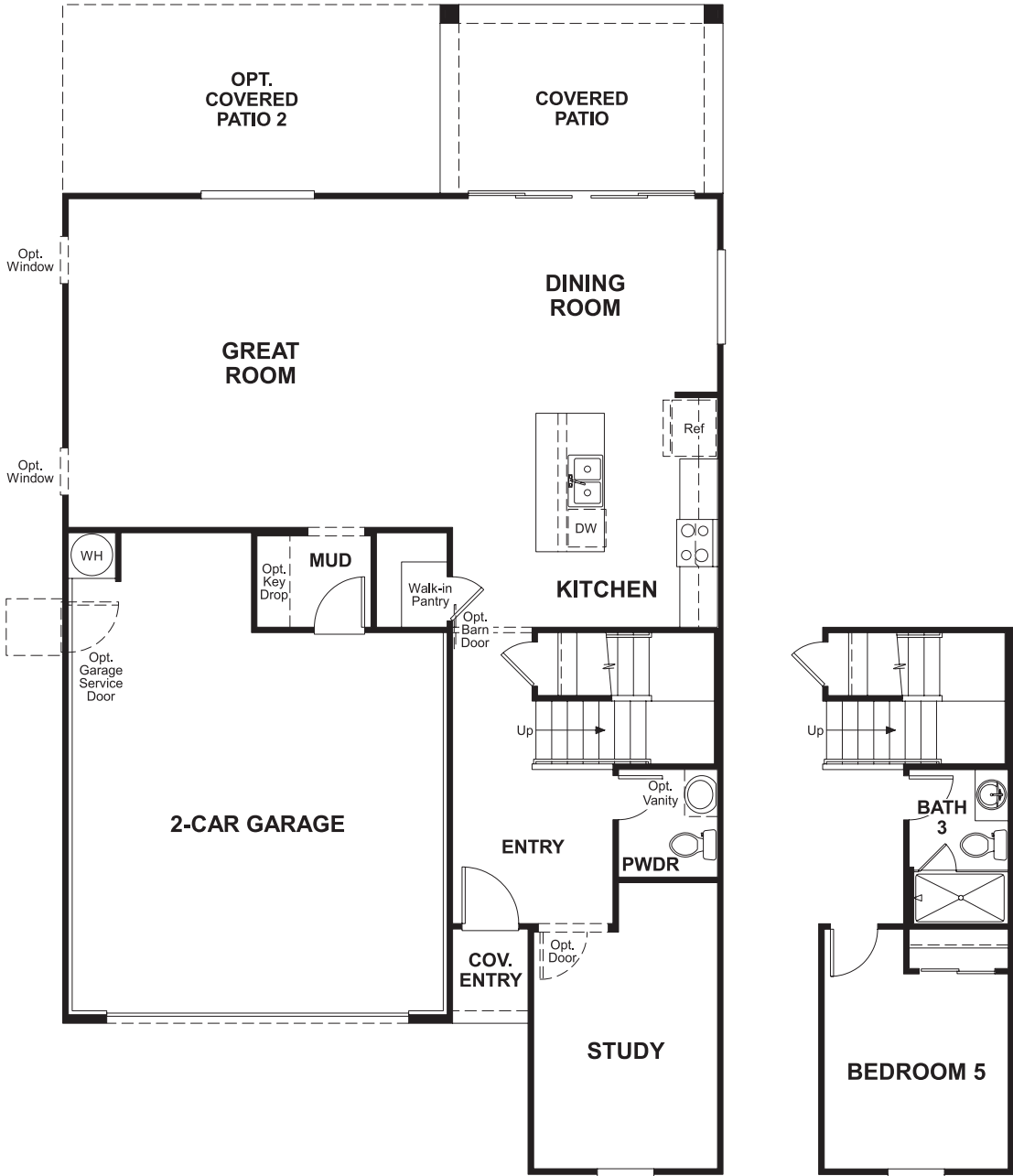
**COMMUNITY LOCATION**  
11349 North 165 Lane  
Surprise, AZ 85388  
480-624-0244

**HOME GALLERY**  
16427 North Scottsdale Road, Suite 175  
Scottsdale, AZ 85254  
877-444-1485

[RICHMONDAMERICAN.COM/SEASONS](http://RICHMONDAMERICAN.COM/SEASONS)

APPROX. SQUARE FEET: 2,630    GARAGE: 2-CAR  
STORIES: 2    PLAN NUMBER: P914  
BEDROOMS: 4

FLOOR PLAN  
MAIN FLOOR



OPT. BEDROOM 5 -  
BATHROOM  
COMBINATION

FLOOR PLAN  
SECOND FLOOR



OPT. BEDROOM 6

THIS PLAN'S PROJECTED  
**HERS® INDEX = 62 \***  
Projected Rating Based on Plans – Field Confirmation Required

How does this floor plan rate?  
Take a look: **100** = Standard new home\* **130** = Typical resale home\*\*  
The lower the number, the better! Refer to the RESNET® HERS index brochure or go to **www.RESNET.us** for details.

**What's a HERS® Index?** HERS stands for Home Energy Rating System, a system created by RESNET® to measure home energy efficiency.^  
A Projected HERS index or rating is a computer simulation performed prior to construction by a third-party HERS rater using RESNET-accredited rating software, rated feature and specification data derived from home plans, features and specifications, and other data selected or assumed by the rater. The projected HERS index is approximate and is subject to change without notice. Actual results will vary.

\*This information is presented for education purposes only. The HERS index for a confirmed rating will be determined by a third-party HERS rater based on data gathered from on-site observations and, if required, testing of rated features for a home as featured, optioned, located, oriented and/or built.  
+Standard new home is based on the RESNET® Reference Home definition with a HERS® index of 100 (based on the 2006 International Energy Conservation Code).  
++Typical resale home is based on the U.S. Department of Energy definition with a HERS® index of 130.

^RESNET® has developed the HERS® index to indicate the comparative efficiencies of homes. It is no guarantee that energy efficiencies will be achieved.