

THE HOPEWELL

Approx. 2,650 sq. ft. | 2 stories | 3-5 bedrooms | 2- to 3-car garage | Plan #F724



ELEVATION E

ABOUT THE HOPEWELL

All main living areas located on main level 1st floor. Master bedroom, secondary bedrooms and loft all located on 2nd floor. Great room concept with kitchen, dining and family entertainment space merging and all opening up to a covered patio. Spacious Master suite with oversized walk in closet and optional tray ceilings. Optional 4th bedroom at study on 1st floor. Optional 5th bedroom at loft on 2nd floor. Optional covered patio. Sunroom addition available. Optional 3rd car garage.



ELEVATION A



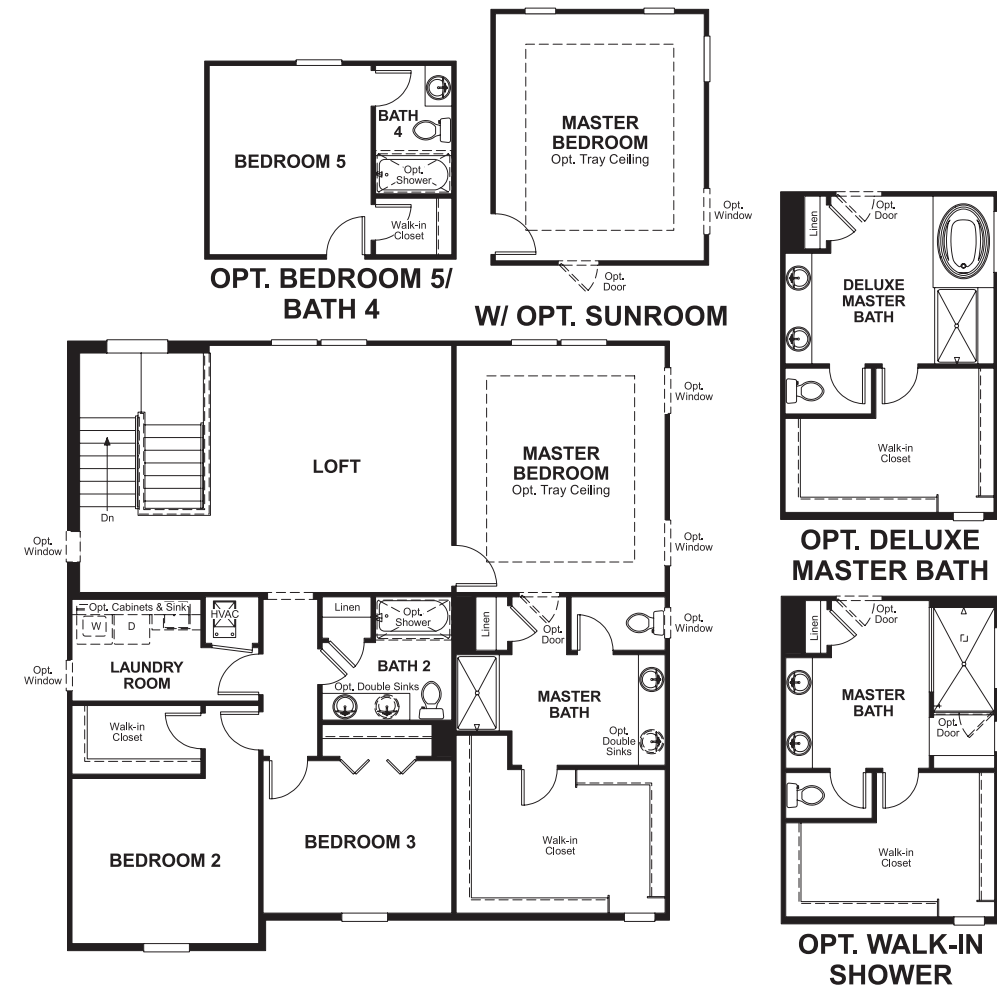
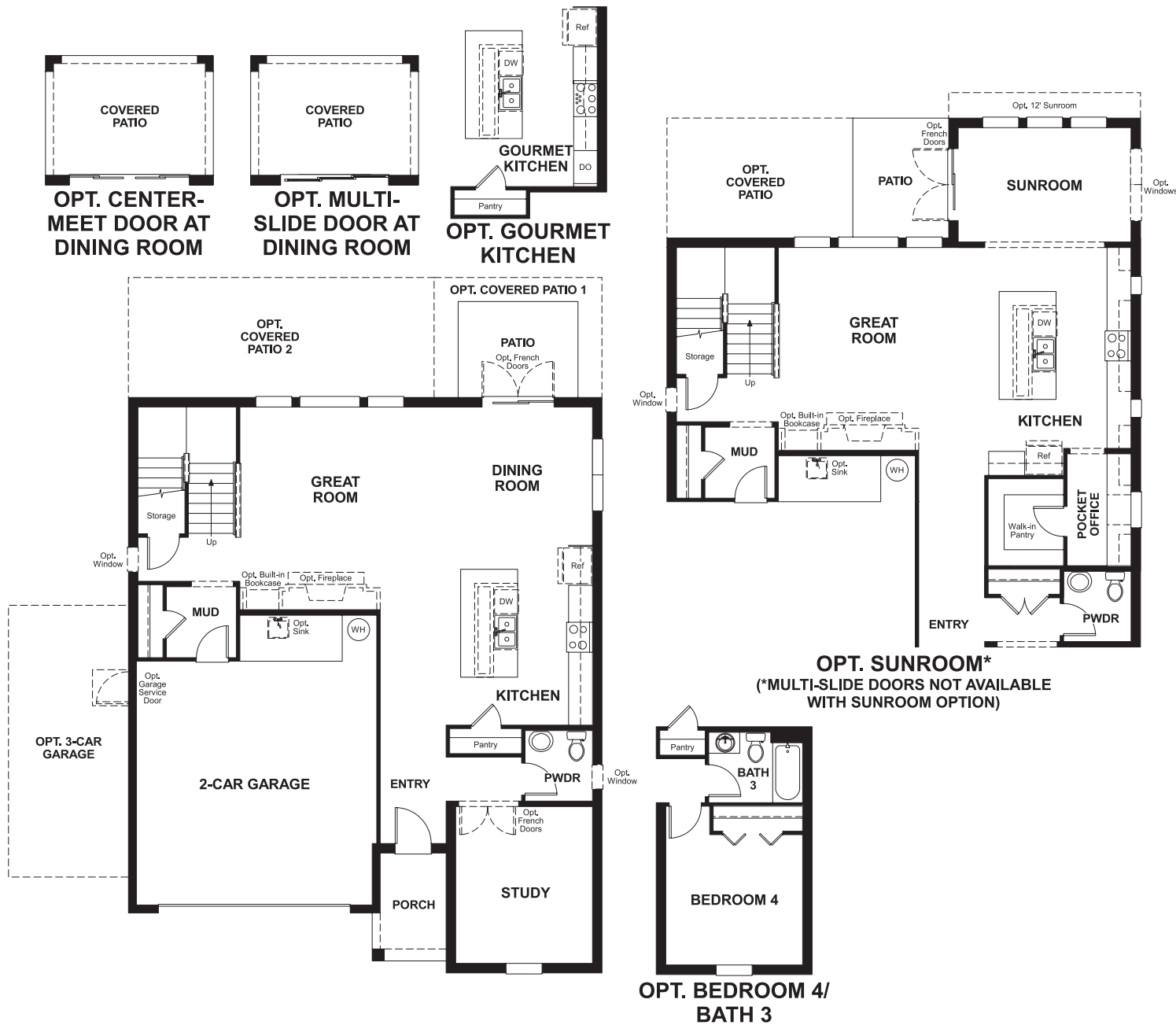
ELEVATION C - SHOWN W/ OPTIONAL STONE



Floor plans and renderings are conceptual drawings and may vary from actual plans and homes as built. Options and features may not be available on all homes and are subject to change without notice. Actual homes may vary from photos and/or drawings which show upgraded landscaping and may not represent the lowest-priced homes in the community. Features may include optional upgrades and may not be available on all homes. Square footage numbers are approximate and are subject to change without notice. Prices, specifications and availability subject to change without notice. ©2017 Richmond American Homes, Richmond American Homes of Florida, LP, CBC1257429 12/20/2017

MAIN FLOOR

SECOND FLOOR



Floor plans and renderings are conceptual drawings and may vary from actual plans and homes as built. Options and features may not be available on all homes and are subject to change without notice. Actual homes may vary from photos and/or drawings which show upgraded landscaping and may not represent the lowest-priced homes in the community. Features may include optional upgrades and may not be available on all homes. Square footage numbers are approximate and are subject to change without notice. Prices, specifications and availability subject to change without notice. ©2017 Richmond American Homes, Richmond American Homes of Florida, LP, CBC1257429 12/20/2017

Floor plans and renderings are conceptual drawings and may vary from actual plans and homes as built. Options and features may not be available on all homes and are subject to change without notice. Actual homes may vary from photos and/or drawings which show upgraded landscaping and may not represent the lowest-priced homes in the community. Features may include optional upgrades and may not be available on all homes. Square footage numbers are approximate and are subject to change without notice. Prices, specifications and availability subject to change without notice. ©2017 Richmond American Homes, Richmond American Homes of Florida, LP, CBC1257429 12/20/2017