

Gran Lake  
**PAIGE**



**Elevation K**

**Approx. square feet:** 2,450

**Stories:** 1

**Bedrooms:** 3 - 5

**Garage:** 2- to 3-car

**Plan Number:** J24P

The ranch-style Paige plan has a large open great room, nook and spacious kitchen with pantry. When it's time to work or relax, retreat to the private study or onto the optional covered porch. A Jack-and-Jill bath, two inviting bedrooms and a luxurious master suite with deluxe bath are also included.

**Available elevations:**



**Elevation K**



**Elevation L**



**Elevation M**



**Elevation N**



**Elevation P**

**COMMUNITY LOCATION**

41 Evenshade Way  
Saint Augustine, FL 32092  
904-406-7646

**HOME GALLERY**

1560 Wells Road, Building A  
Orange Park, FL 32073  
800-221-3014



**COMMUNITY LOCATION**

41 Evenshade Way  
Saint Augustine, FL 32092  
904-406-7646

**HOME GALLERY**

1560 Wells Road, Building A  
Orange Park, FL 32073  
800-221-3014

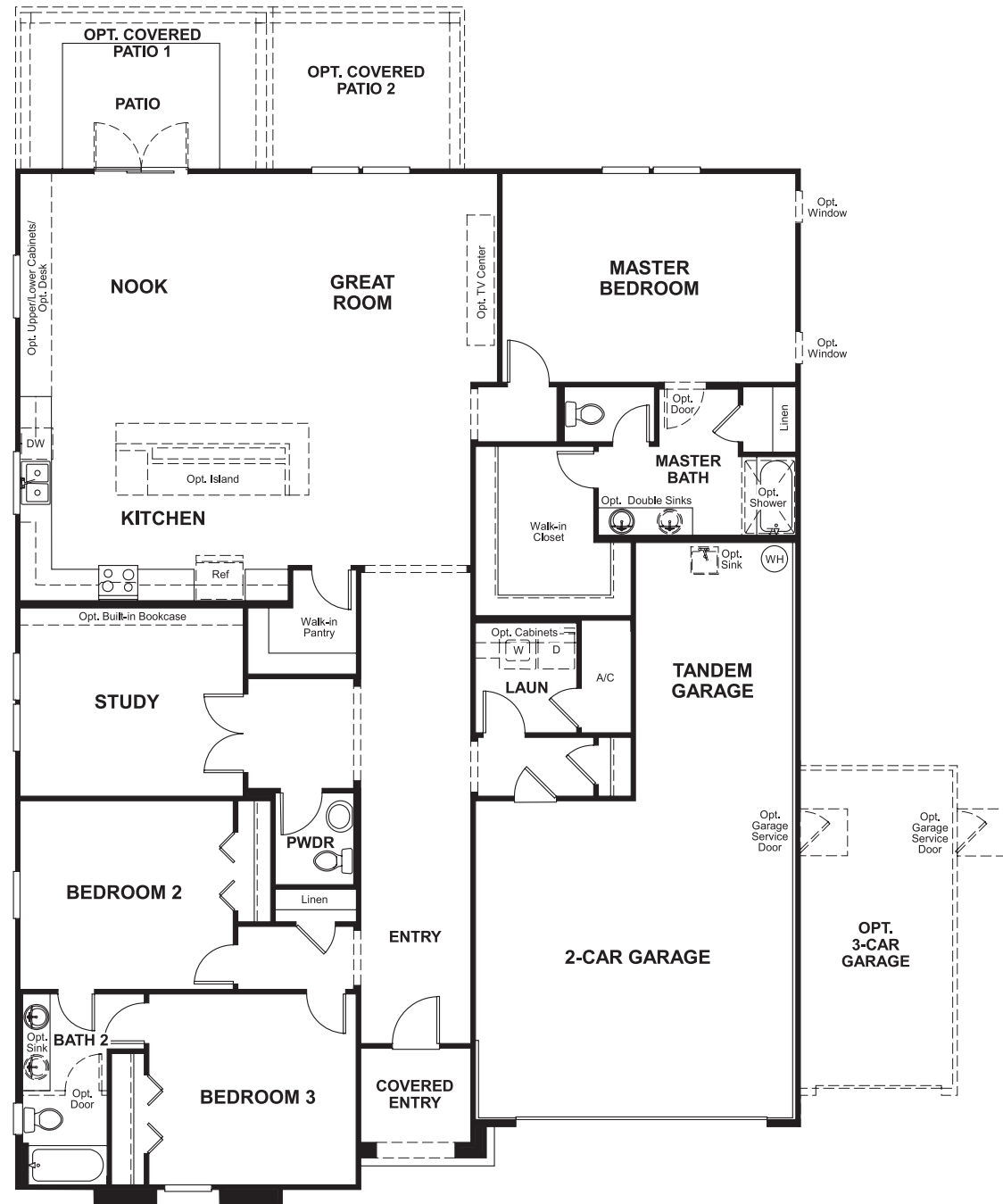


Gran Lake  
**PAIGE**

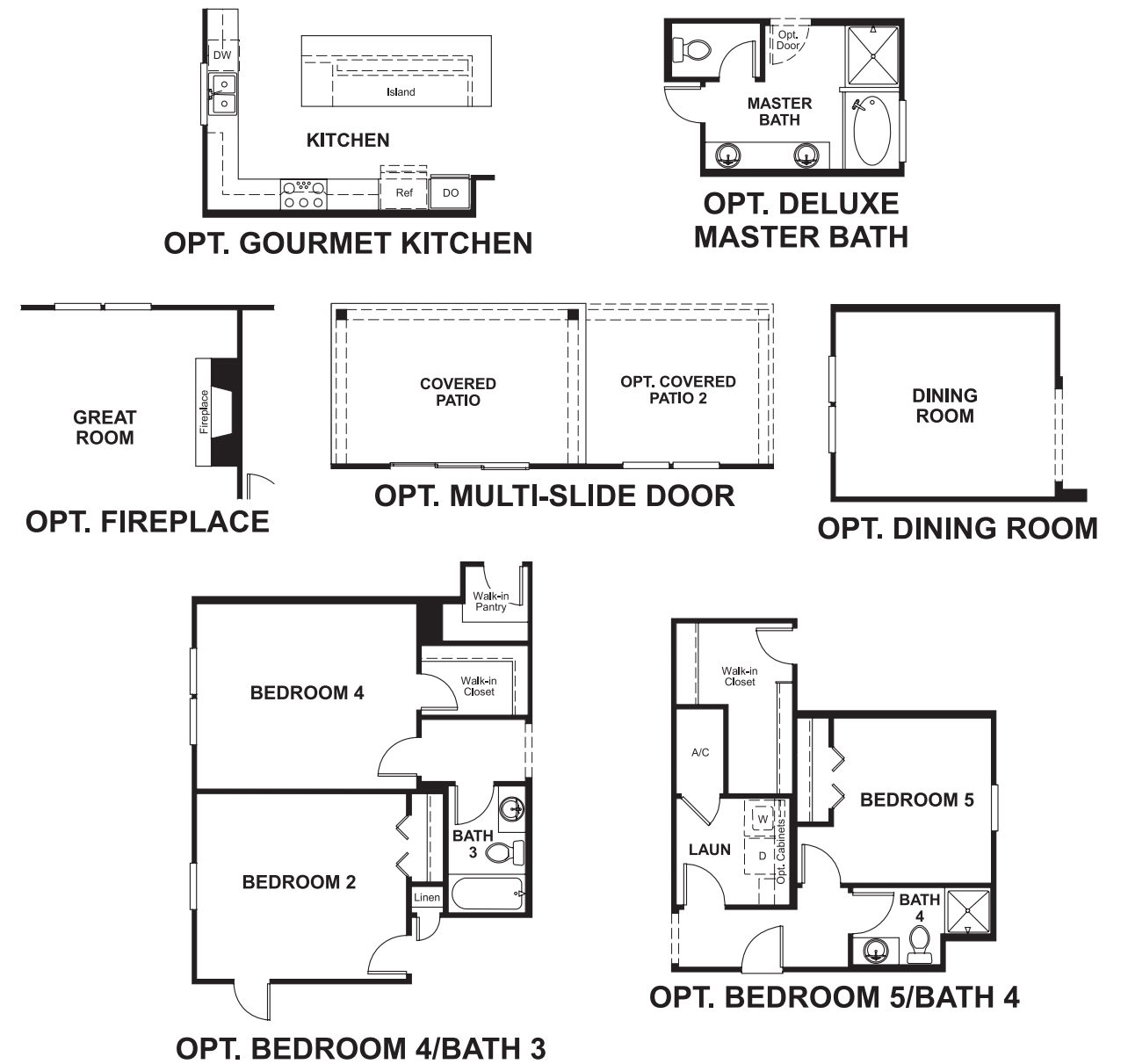
Approx. square feet: 2,450  
Stories: 1  
Bedrooms: 3 - 5

Garage: 2- to 3-car  
Plan Number: J24P

**Floor Plan**  
Main Floor



**Floor Plan**  
Main Floor Options



**THIS PLAN'S PROJECTED  
HERS® INDEX = 62\***  
Projected Rating Based on Plans – Field Confirmation Required

**How does this floor plan rate?**  
Take a look: **100** = Standard new home\* **130** = Typical resale home\*\*  
The lower the number, the better! Refer to the RESNET® HERS index brochure or go to [www.RESNET.us](http://www.RESNET.us) for details.

**What's a HERS® Index?** HERS stands for Home Energy Rating System, a system created by RESNET® to measure home energy efficiency. A Projected HERS index or rating is a computer simulation performed prior to construction by a third-party HERS rater using RESNET-accredited rating software, rated feature and specification data derived from home plans, features and specifications, and other data selected or assumed by the rater. The projected HERS index is approximate and is subject to change without notice. Actual results will vary.

\*This information is presented for education purposes only. The HERS index for a confirmed rating will be determined by a third-party HERS rater based on data gathered from on-site observations and, if required, testing of rated features for a home as featured, optioned, located, oriented and/or built.  
+Standard new home is based on the RESNET® Reference Home definition with a HERS® index of 100 (based on the 2006 International Energy Conservation Code).  
\*\*Typical resale home is based on the U.S. Department of Energy definition with a HERS® index of 130.

^RESNET® has developed the HERS® index to indicate the comparative efficiencies of homes. It is no guarantee that energy efficiencies will be achieved.