




ELEVATION M

ABOUT THE ALCOTT

The Alcott is a ranch home with plenty of options for personalization. The living room adjacent to the kitchen can be optioned as a fourth bedroom. A deluxe master bath is available, offering a separate tub and shower. Other features include a spacious family room and kitchen with nook, island and walk-in pantry.

COMMUNITY LOCATION:

Gran Lake | 41 Evenshade Way | Saint Augustine, FL 32092 | 904.406.7646



Floor plans and renderings are conceptual drawings and may vary from actual plans and homes as built. Options and features may not be available on all homes and are subject to change without notice. Actual homes may vary from photos and/or drawings which show upgraded landscaping and may not represent the lowest-priced homes in the community. Features may include optional upgrades and may not be available on all homes. Square footage numbers are approximate and are subject to change without notice. Prices, specifications and availability subject to change without notice. ©2018 Richmond American Homes, Richmond American Homes of Florida, LP, CBC1257429 3/7/2018

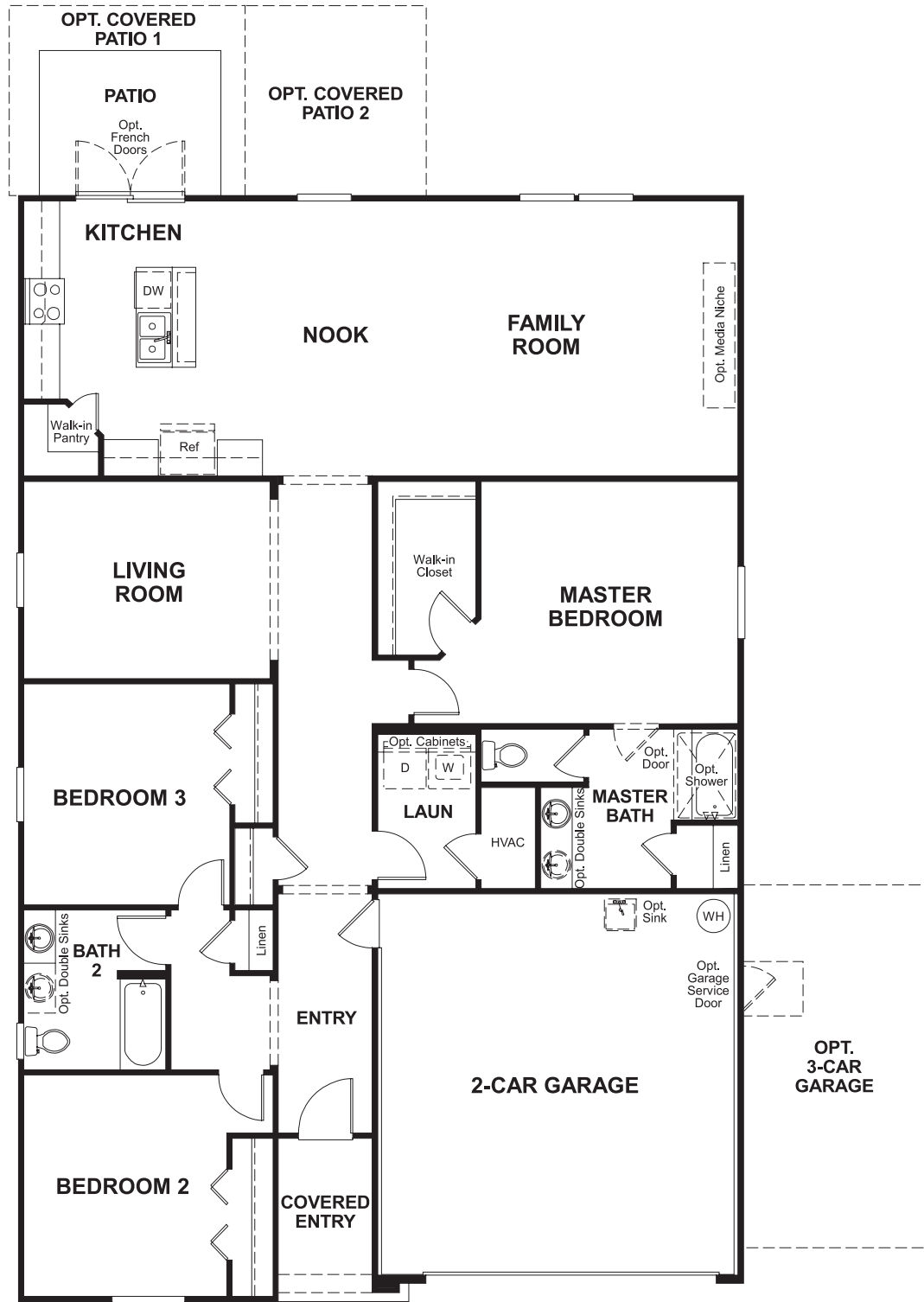


ELEVATION K

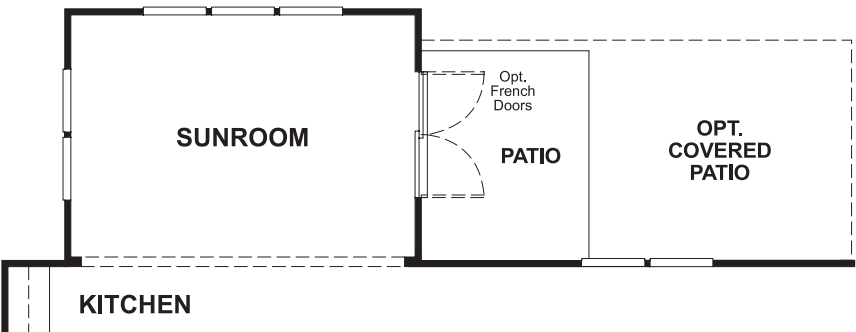


ELEVATION L

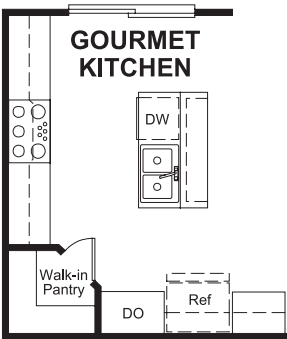
MAIN FLOOR



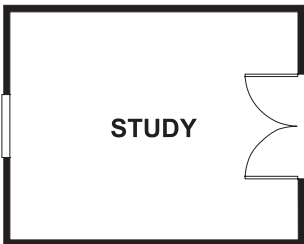
MAIN FLOOR OPTIONS



OPT. SUNROOM



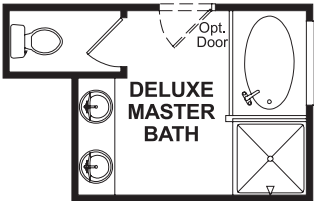
OPT. GOURMET KITCHEN



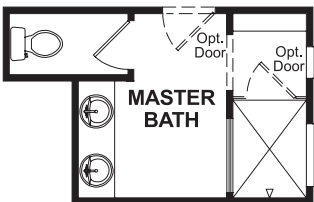
OPT. STUDY



OPT. BEDROOM 4



OPT. DELUXE MASTER BATH



OPT. WALK-IN SHOWER

THIS PLAN'S PROJECTED
HERS® INDEX = 66*
Projected Rating Based on Plans – Field Confirmation required

How does this floor plan rate?
Take a look: **100** = Standard new home+ **130** = Typical resale Home++
The lower number, the better! Refer to the RESNET® HERS index brochure or go to www.RESNET.us and www.HERSindex.com

What's a HERS® Index? HERS stands for Home Energy Rating System, a system created by RESNET® to measure home energy efficiency.^
A Projected HERS index or rating is a computer simulation performed prior to construction by a third-party HERS rater using RESNET-accredited rating software, rated feature and specification data derived from home plans, features and specifications, and other data selected or assumed by the rater. The projected HERS index is approximate and is subject to change without notice. Actual results will vary.