

Rancho Reina  
**DANIEL**



**Elevation A**

**Approx. square feet:** 2,100  
**Stories:** 1  
**Bedrooms:** 3  
**Garage:** 2-car  
**Plan Number:** T21D

A charming covered front porch welcomes you to this beautiful new ranch-style floor plan. The open kitchen includes maple cabinets, granite countertops, a convenient center island and a walk-in pantry, and the spacious great room is perfect for entertaining. Choose from a private study or optional fourth bedroom, and relax in the lavish master suite with optional deluxe bath. Other personalization options include a gourmet kitchen and a side-entry garage.

**Available elevations:**



**Elevation A**



**Elevation B**



**Elevation C**



**COMMUNITY LOCATION**  
 Houghton and Old Spanish Trail  
 Tucson, AZ 85748  
 520-498-4155

**HOME GALLERY**  
 3091 West Ina Road  
 Tucson, AZ 85741  
 520-498-4112



**COMMUNITY LOCATION**  
 Houghton and Old Spanish Trail  
 Tucson, AZ 85748  
 520-498-4155

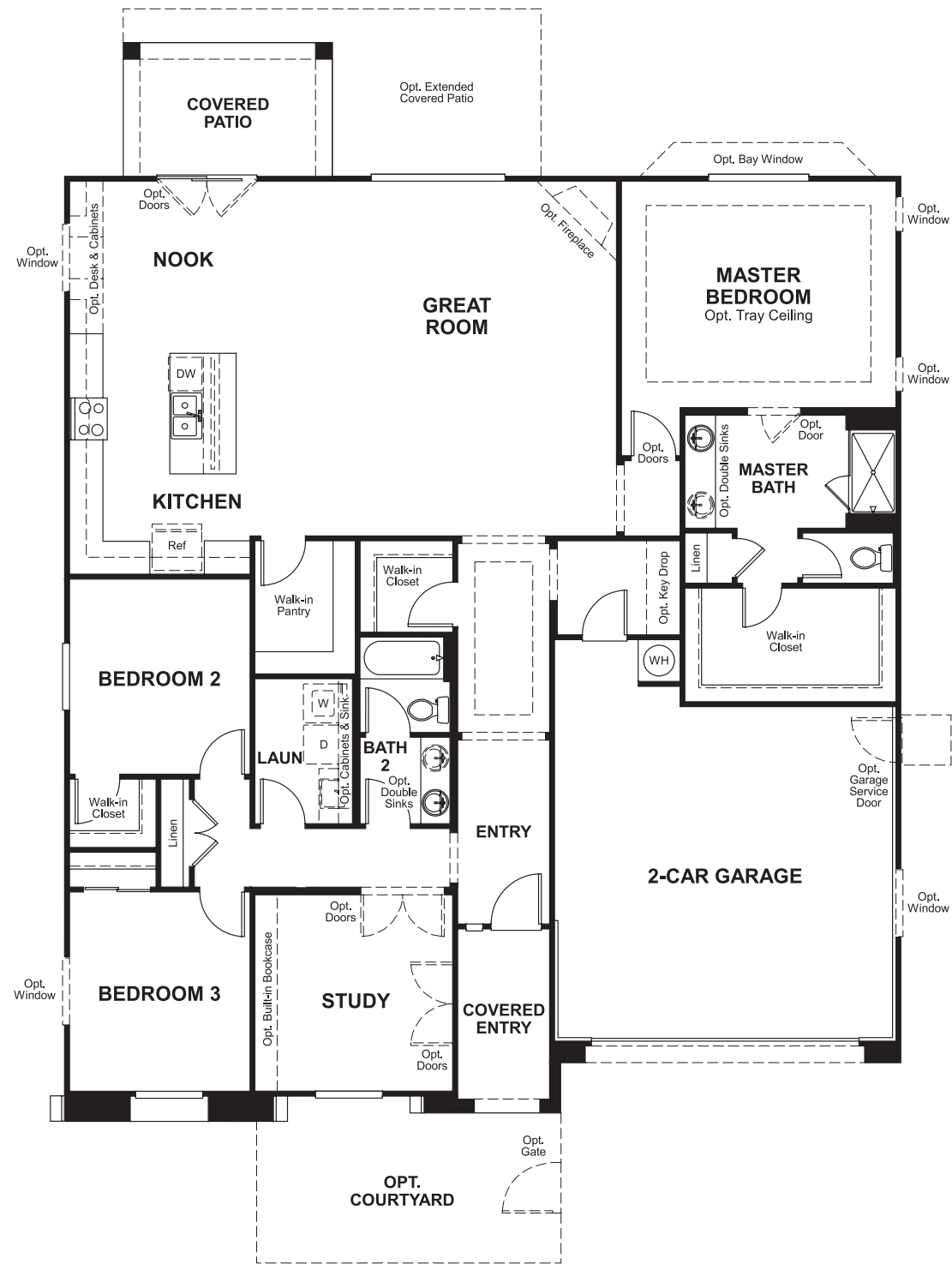
**HOME GALLERY**  
 3091 West Ina Road  
 Tucson, AZ 85741  
 520-498-4112

Rancho Reina  
**DANIEL**

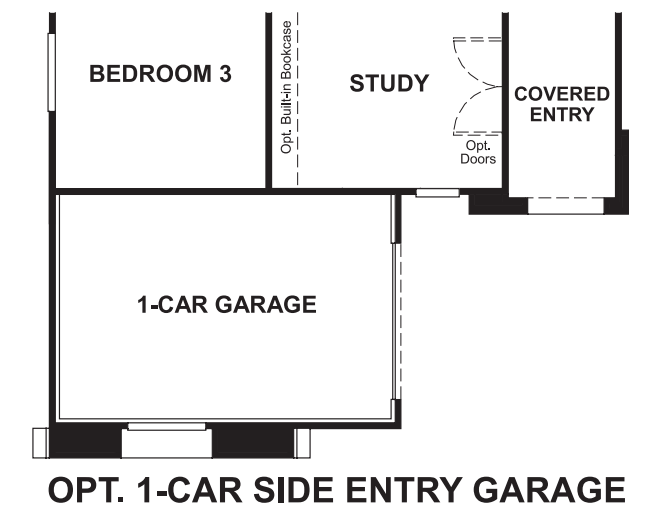
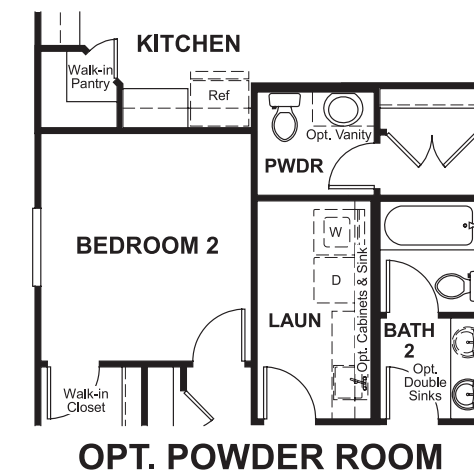
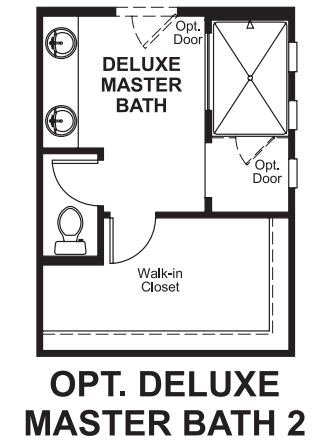
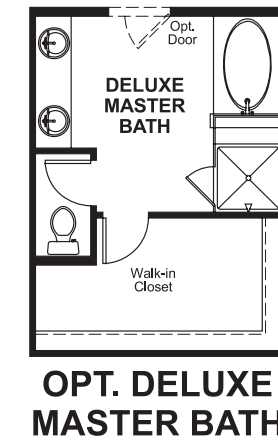
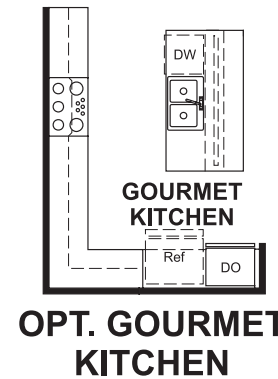
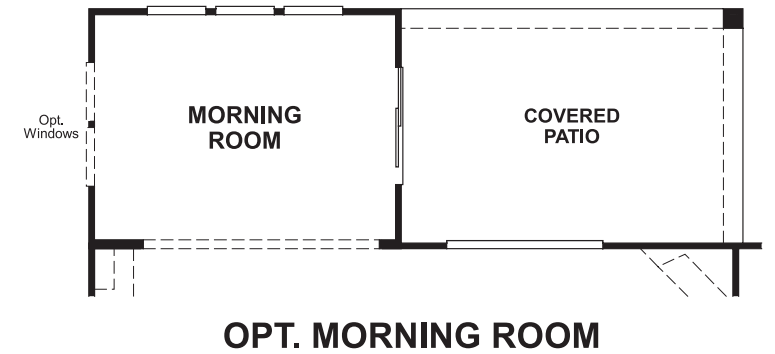
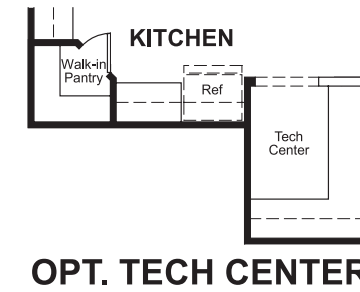
Approx. square feet: 2,100  
Stories: 1  
Bedrooms: 3

Garage: 2-car  
Plan Number: T21D

**Floor Plan**  
Main Floor



**Floor Plan**  
Main Floor Options



**THIS PLAN'S PROJECTED  
HERS® INDEX = 68\***  
Projected Rating Based on Plans – Field Confirmation Required

**How does this floor plan rate?**  
Take a look: 100 = Standard new home\* 130 = Typical resale home\*\*  
The lower the number, the better! Refer to the RESNET® HERS index brochure or go to [www.RESNET.us](http://www.RESNET.us) for details.

**What's a HERS® Index?** HERS stands for Home Energy Rating System, a system created by RESNET® to measure home energy efficiency. A Projected HERS index or rating is a computer simulation performed prior to construction by a third-party HERS rater using RESNET-accredited rating software, rated feature and specification data derived from home plans, features and specifications, and other data selected or assumed by the rater. The projected HERS index is approximate and is subject to change without notice. Actual results will vary.

\*This information is presented for education purposes only. The HERS index for a confirmed rating will be determined by a third-party HERS rater based on data gathered from on-site observations and, if required, testing of rated features for a home as featured, optioned, located, oriented and/or built.  
+Standard new home is based on the RESNET® Reference Home definition with a HERS® index of 100 (based on the 2006 International Energy Conservation Code).  
++Typical resale home is based on the U.S. Department of Energy definition with a HERS® index of 130.

^RESNET® has developed the HERS® index to indicate the comparative efficiencies of homes. It is no guarantee that energy efficiencies will be achieved.