

Tuscano  
**DAMON**



**Elevation A**

**Available elevations:**



**Elevation B**



**Elevation C**

**Approx. square feet:** 2,220

**Stories:** 1

**Bedrooms:** 3

**Garage:** 3-car

**Plan Number:** P771

The Damon plan opens up with two charming bedrooms sharing access to a full bath. Beyond the entryway, a formal dining room can be optioned as a private study. Toward the back of the home, a generous great room flows into an inviting kitchen with a center island, walk-in pantry and breakfast nook. This open-concept area also boasts an adjacent covered patio, as well as access to a lavish master suite—boasting a roomy walk-in closet and a private bath with deluxe options. Additional highlights include a mudroom and an attached RV garage!



**COMMUNITY LOCATION**

8008 West Pueblo Avenue  
Phoenix, AZ 85043  
480-624-0244

**HOME GALLERY**

16427 North Scottsdale Road, Suite 175  
Scottsdale, AZ 85254  
877-748-4822



**COMMUNITY LOCATION**

8008 West Pueblo Avenue  
Phoenix, AZ 85043  
480-624-0244

**HOME GALLERY**

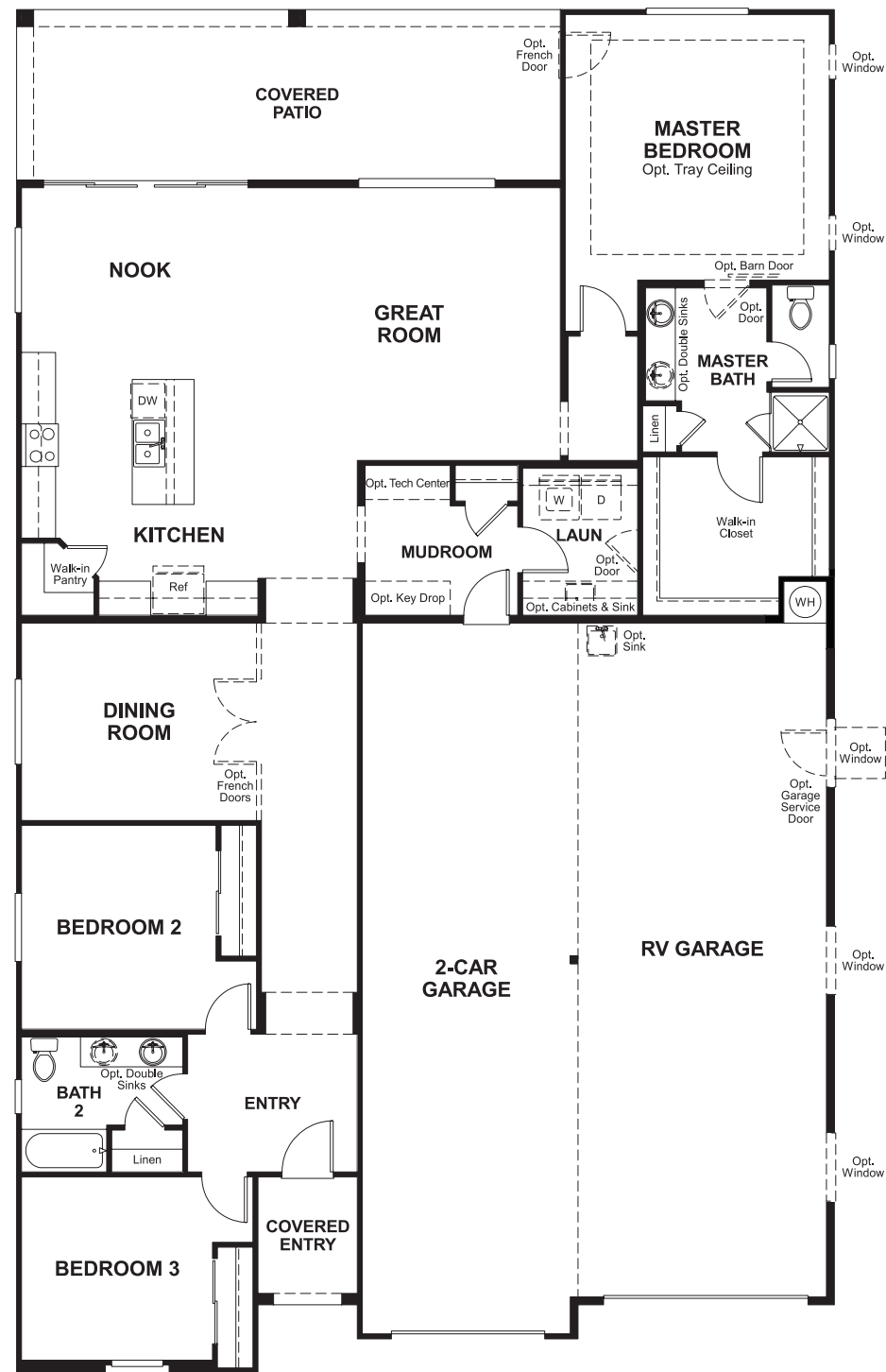
16427 North Scottsdale Road, Suite 175  
Scottsdale, AZ 85254  
877-748-4822

Tuscano  
**DAMON**

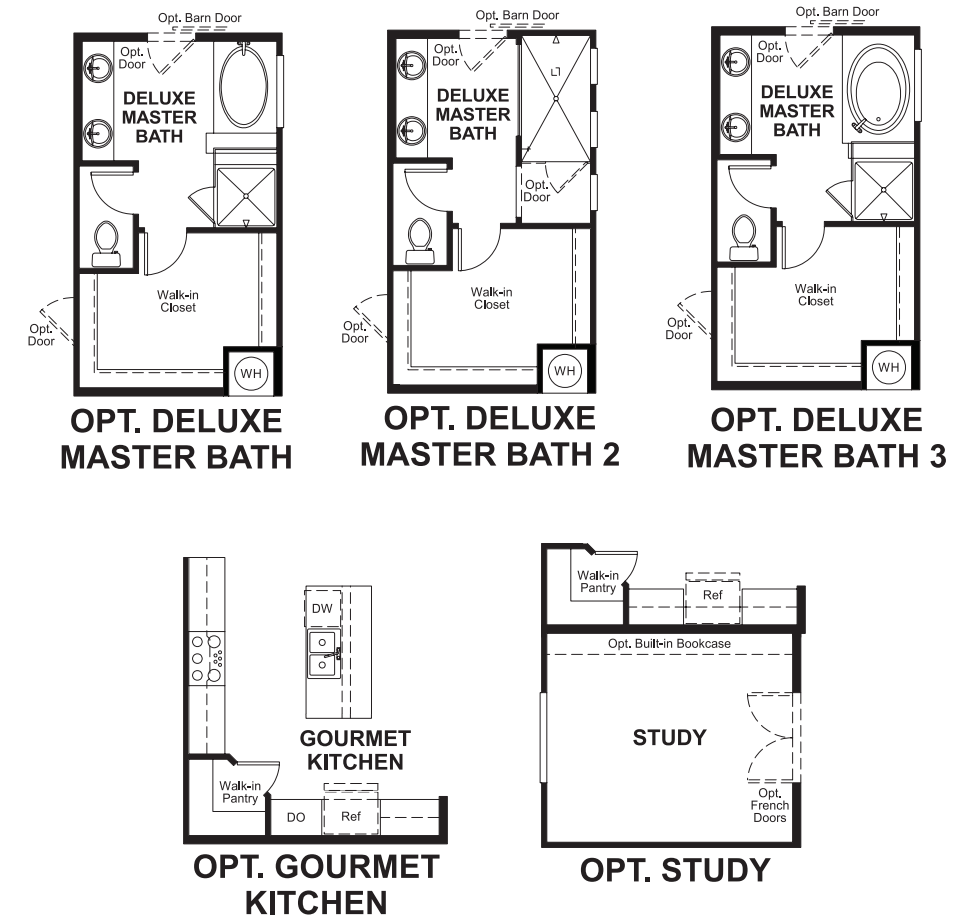
Approx. square feet: 2,220  
Stories: 1  
Bedrooms: 3

Garage: 3-car  
Plan Number: P771

**Floor Plan**  
Main Floor



**Floor Plan**  
Main Floor Options



**THIS PLAN'S PROJECTED  
HERS® INDEX = 62\***  
Projected Rating Based on Plans – Field Confirmation Required

**How does this floor plan rate?**  
Take a look: **100** = Standard new home\* **130** = Typical resale home\*\*  
The lower the number, the better! Refer to the RESNET® HERS index brochure or go to [www.RESNET.us](http://www.RESNET.us) for details.

**What's a HERS® Index?** HERS stands for Home Energy Rating System, a system created by RESNET® to measure home energy efficiency.<sup>^</sup>  
A Projected HERS index or rating is a computer simulation performed prior to construction by a third-party HERS rater using RESNET-accredited rating software, rated feature and specification data derived from home plans, features and specifications, and other data selected or assumed by the rater. The projected HERS index is approximate and is subject to change without notice. Actual results will vary.

\*This information is presented for education purposes only. The HERS index for a confirmed rating will be determined by a third-party HERS rater based on data gathered from on-site observations and, if required, testing of rated features for a home as featured, optioned, located, oriented and/or built.  
+Standard new home is based on the RESNET® Reference Home definition with a HERS® index of 100 (based on the 2006 International Energy Conservation Code).  
\*\*Typical resale home is based on the U.S. Department of Energy definition with a HERS® index of 130.

<sup>^</sup>RESNET® has developed the HERS® index to indicate the comparative efficiencies of homes. It is no guarantee that energy efficiencies will be achieved.