

MOONSTONE  
CITRINE



**APPROX. SQUARE FEET: 1,850**  
**STORIES: 2**  
**BEDROOMS: 3 - 4**  
**GARAGE: 2-car**  
**PLAN NUMBER: L904**

Imagine your life in the two-story Citrine plan. Breakfast at the spacious kitchen island or in the nearby dining room. Spend the afternoon catching up on the latest bestseller in your quiet study. Host a movie night in the inviting great room. At the end of the day, retreat upstairs to the master suite, complete with a roomy walk-in closet and private bath. The second floor also boasts two additional bedrooms, a convenient laundry and another full bath. Personalize this plan with a covered patio and a main-floor bedroom in lieu of the study.

**Available elevation:**



Elevation A



Elevation B



Elevation C



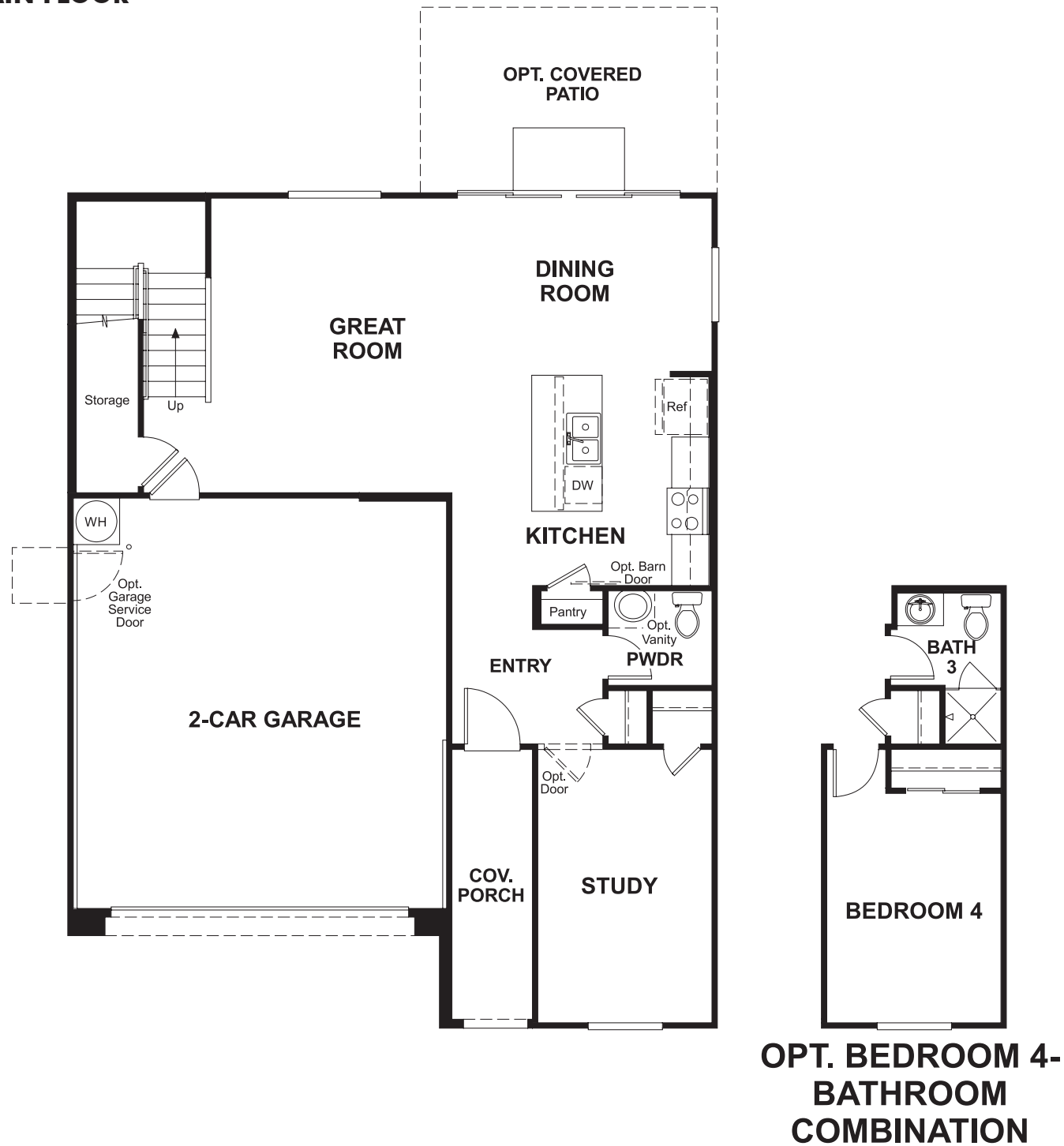
Elevation D

**COMMUNITY LOCATION**  
 1813 Pinsky Lane  
 North Las Vegas, NV 89032  
 702-638-4440

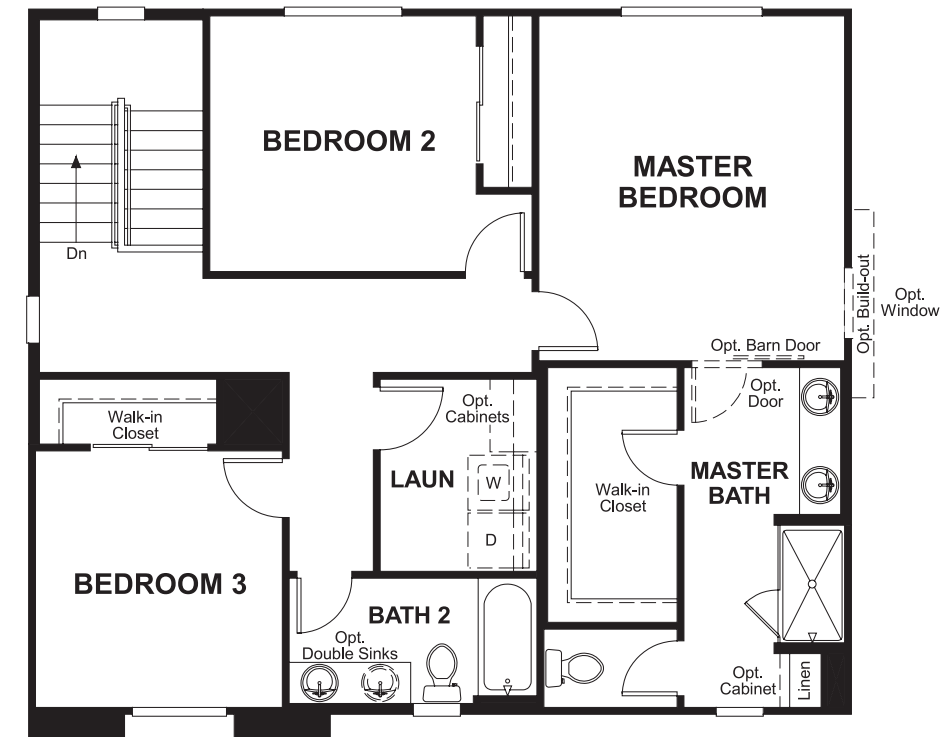
**HOME GALLERY**  
 7770 South Dean Martin Drive, Suite 308  
 Las Vegas, NV 89139  
 702-617-8400

[RICHMONDAMERICAN.COM/SEASONS](http://RICHMONDAMERICAN.COM/SEASONS)

FLOOR PLAN  
MAIN FLOOR



FLOOR PLAN  
SECOND FLOOR



**THIS PLAN'S PROJECTED  
HERS® INDEX = 67\***  
Projected Rating Based on Plans – Field Confirmation Required

**How does this floor plan rate?**  
Take a look: **100** = Standard new home+ **130** = Typical resale home\*\*  
The lower the number, the better! Refer to the RESNET® HERS index brochure or go to [www.RESNET.us](http://www.RESNET.us) for details.

**What's a HERS® Index?** HERS stands for Home Energy Rating System, a system created by RESNET® to measure home energy efficiency. A Projected HERS index or rating is a computer simulation performed prior to construction by a third-party HERS rater using RESNET-accredited rating software, rated feature and specification data derived from home plans, features and specifications, and other data selected or assumed by the rater. The projected HERS index is approximate and is subject to change without notice. Actual results will vary.

\*This information is presented for education purposes only. The HERS index for a confirmed rating will be determined by a third-party HERS rater based on data gathered from on-site observations and, if required, testing of rated features for a home as featured, optioned, located, oriented and/or built.  
+Standard new home is based on the RESNET® Reference Home definition with a HERS® index of 100 (based on the 2006 International Energy Conservation Code).  
\*\*Typical resale home is based on the U.S. Department of Energy definition with a HERS® index of 130.

^RESNET® has developed the HERS® index to indicate the comparative efficiencies of homes. It is no guarantee that energy efficiencies will be achieved.