

THE BERKELEY

Approx. 2,480 sq. ft. | 2 stories | 3-5 bedrooms | 2-car garage | Plan #N768



ELEVATION D

ABOUT THE BERKELEY

From its covered front porch to its quiet study and spacious great room, the Berkeley was designed for convenience and comfort. This plan offers an open kitchen with center island and breakfast nook and a optional covered patio that's ideal for large gatherings. The second floor features a convenient laundry, a relaxing loft and three bedrooms with walk-in closets, including the lavish master suite. Customize this home with an optional gourmet kitchen and up to two extra bedrooms.

COMMUNITY LOCATION:

Inspirato at Mountain House | 1429 South Prosperity Street | Mountain House, CA 95391 | 209.650.7023

*This information is presented for education purposes only. The HERS index for a confirmed rating will be determined by a third-party HERS rater based on data gathered from on-site observations and, if required, testing of rated features for a home as featured, optioned, located, oriented and/or built.

+Standard new home is based on the RESNET® Reference Home definition with a HERS® index of 100 (based on the 2006 International Energy Conservation Code).

++Typical resale home is based on the U.S. Department of Energy definition with a HERS® index of 130.

^RESNET® has developed the HERS® index to indicate the comparative efficiencies of homes. It is no guarantee that energy efficiencies will be achieved.



Floor plans and renderings are conceptual drawings and may vary from actual plans and homes as built. Options and features may not be available on all homes and are subject to change without notice. Actual homes may vary from photos and/or drawings which show upgraded landscaping and may not represent the lowest-priced homes in the community. Features may include optional upgrades and may not be available on all homes. Square footage numbers are approximate and are subject to change without notice. ©2018 Richmond American Homes, Richmond American Homes of Maryland, Inc., California Bureau of Real Estate – Real Estate Broker, Corporation License Number 01842595. 4/10/2018



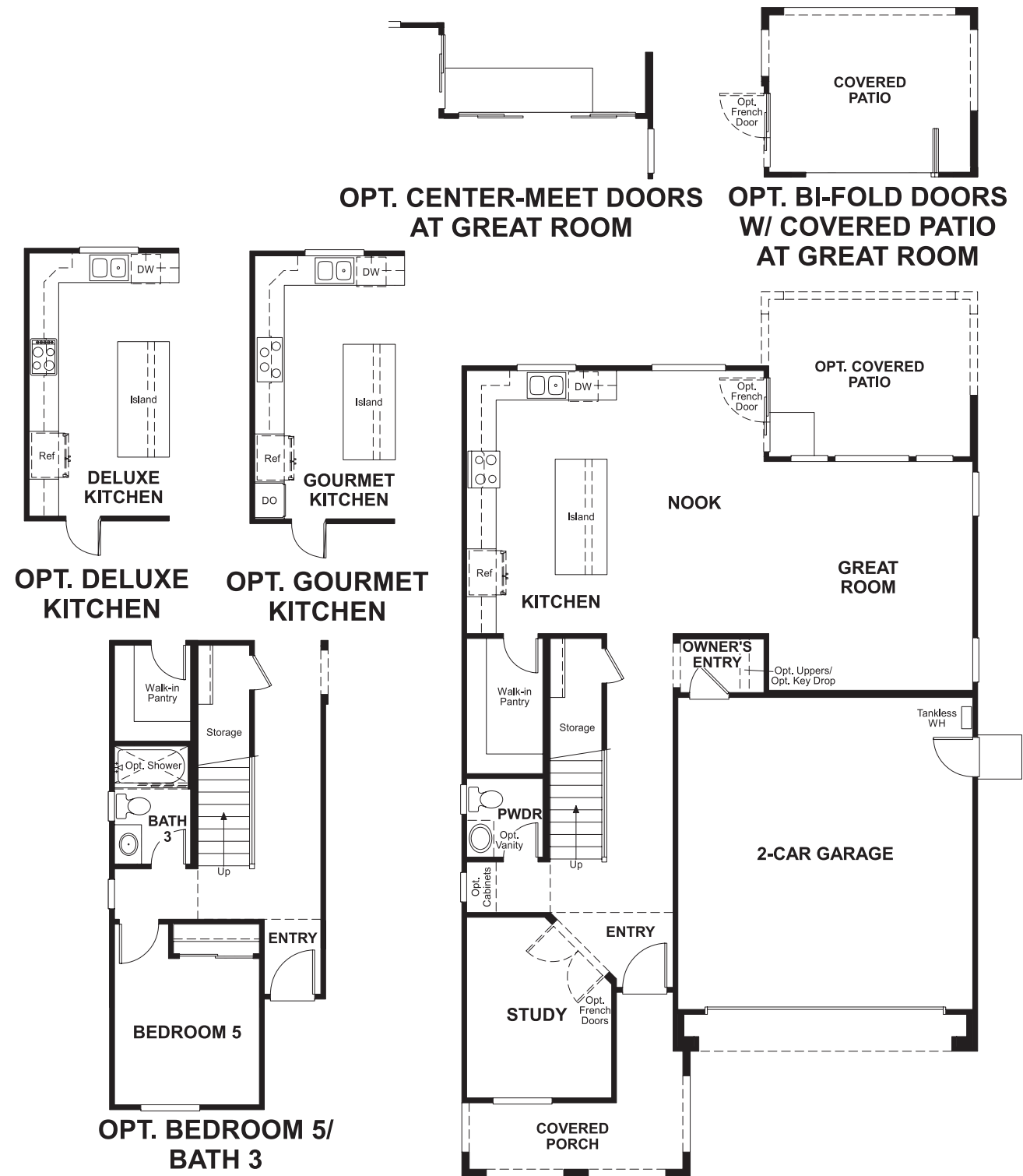
ELEVATION A



ELEVATION B

MAIN FLOOR

SECOND FLOOR



THIS PLAN'S PROJECTED **HERS® INDEX = 45***
 Projected Rating Based on Plans – Field Confirmation required

How does this floor plan rate?
 Take a look: **100** = Standard new home+ **130** = Typical resale Home++
 The lower number, the better! Refer to the RESNET® HERS index brochure or go to www.RESNET.us and www.HERSindex.com

What's a HERS® Index? HERS stands for Home Energy Rating System, a system created by RESNET® to measure home energy efficiency. ^
 A Projected HERS index or rating is a computer simulation performed prior to construction by a third-party HERS rater using RESNET-accredited rating software, rated feature and specification data derived from home plans, features and specifications, and other data selected or assumed by the rater. The projected HERS index is approximate and is subject to change without notice. Actual results will vary.