

THE ROCCO

Approx. 3,450 sq. ft. | 1 story | 4 bedrooms | 3-car garage | Plan #L34R



ELEVATION C

ABOUT THE ROCCO

The Rocco comes with an inspired courtyard entrance. Inside, a spacious floor plan is anchored by a great room that flows into a breakfast nook—with an adjacent formal dining room—and an open kitchen with a large eat-in island and access to the covered patio. A private study and four comfortable bedrooms complete this floor plan—including a master suite with a spa-like master bath and dual walk-in closets. Options include an extended covered patio and a pet spa.

COMMUNITY LOCATION:

STIRLING MANOR AT HIGHLAND HILLS | 11126 Mount Cass Street | Las Vegas, NV 89141 | 702.638.4440

*This information is presented for education purposes only. The HERS index for a confirmed rating will be determined by a third-party HERS rater based on data gathered from on-site observations and, if required, testing of rated features for a home as featured, optioned, located, oriented and/or built.

+Standard new home is based on the RESNET® Reference Home definition with a HERS® index of 100 (based on the 2006 International Energy Conservation Code).

++Typical resale home is based on the U.S. Department of Energy definition with a HERS® index of 130.

^RESNET® has developed the HERS® index to indicate the comparative efficiencies of homes. It is no guarantee that energy efficiencies will be achieved.

Floor plans and renderings are conceptual drawings and may vary from actual plans and homes as built. Options and features may not be available on all homes and are subject to change without notice. Actual homes may vary from photos and/or drawings which show upgraded landscaping and may not represent the lowest-priced homes in the community. Features may include optional upgrades and may not be available on all homes. Square footage numbers are approximate and are subject to change without notice. ©2017 Richmond American Homes. In Nevada, homes are offered by Richmond American Homes of Nevada, Inc. (Nevada Contractor License #0026417.) 12/13/2017



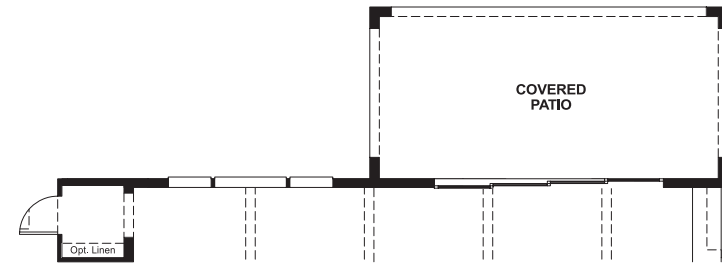
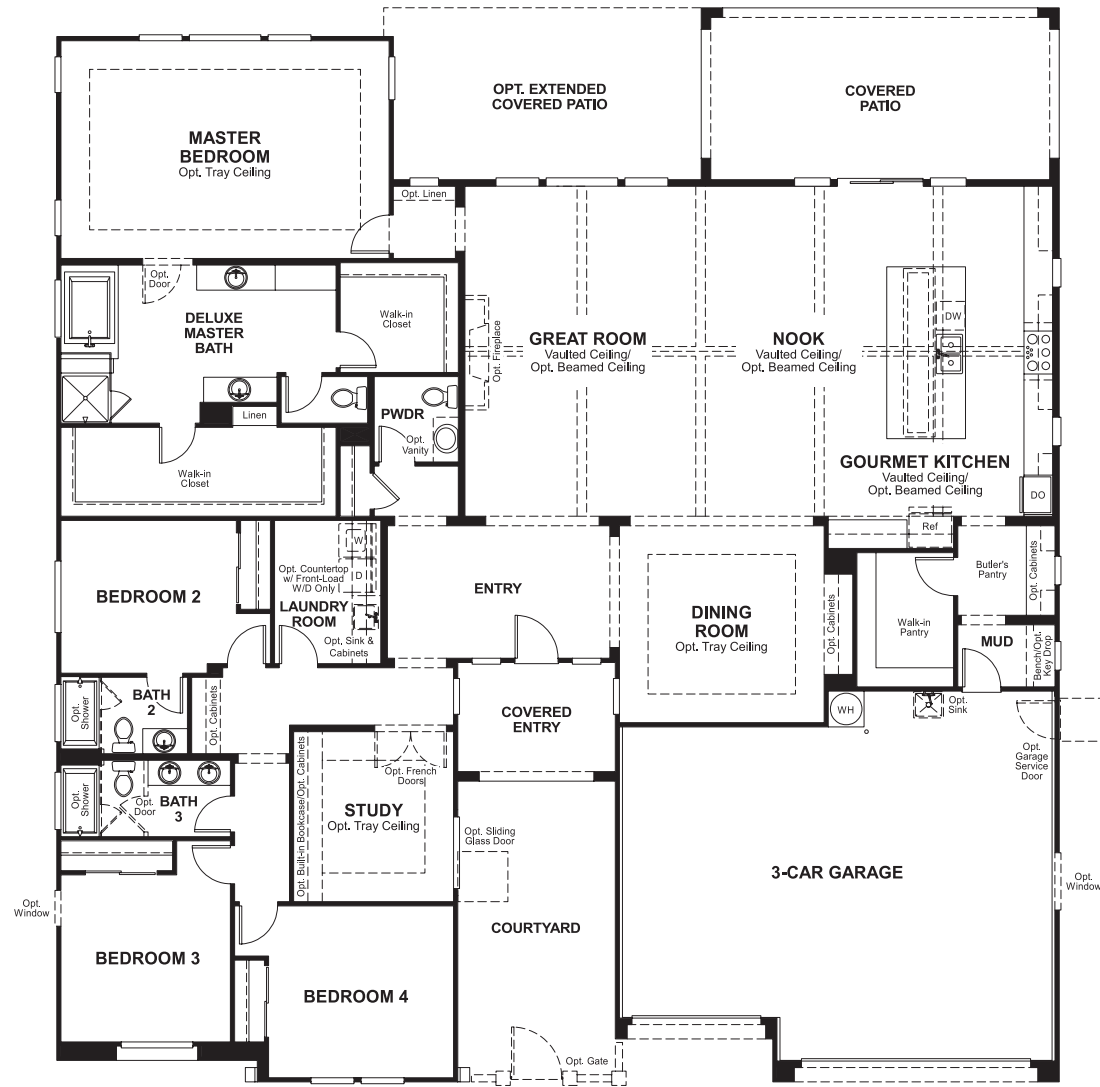
ELEVATION A



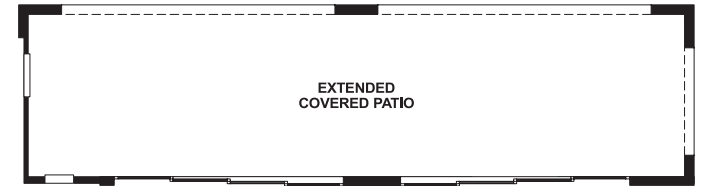
ELEVATION B

MAIN FLOOR

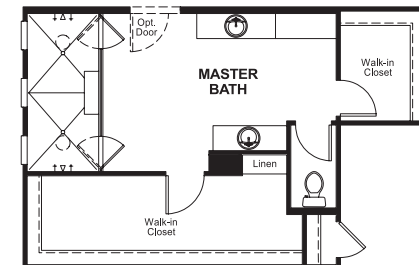
MAIN FLOOR OPTIONS



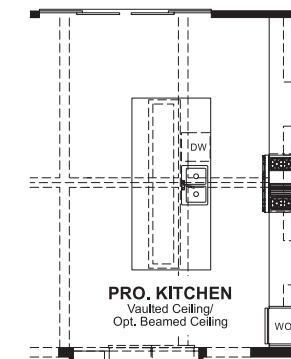
OPT. MULTI-SLIDE DOOR AT NOOK/KITCHEN



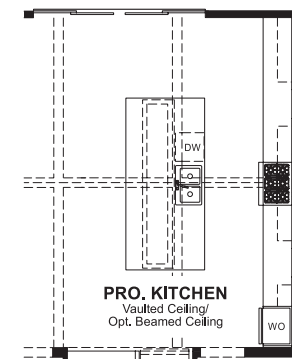
OPT. MULTI-SLIDE DOOR AT GREAT ROOM AND NOOK/KITCHEN W/ EXTENDED COVERED PATIO



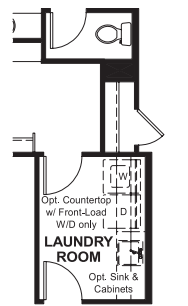
OPT. MASTER BATH W/ WALK-IN SHOWER



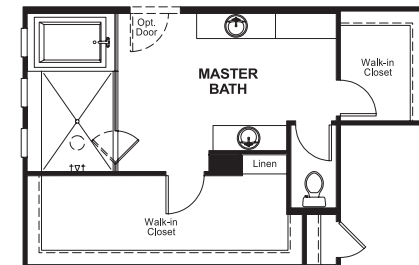
OPT. PROFESSIONAL KITCHEN



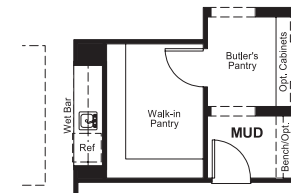
OPT. PROFESSIONAL LITE KITCHEN



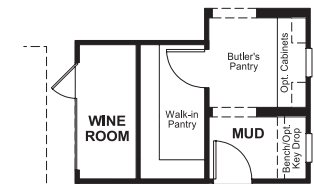
ALT. LAUNDRY ENTRANCE



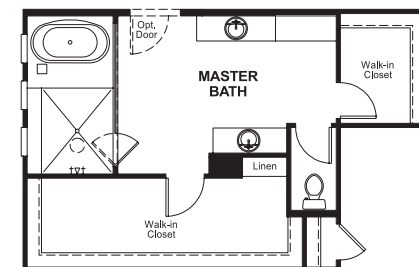
OPT. MASTER SPA BATH



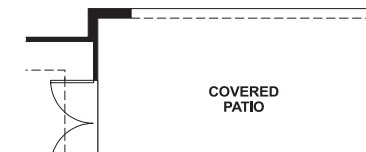
OPT. WET BAR AT DINING ROOM



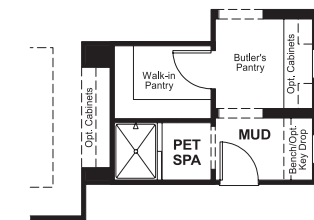
OPT. WINE ROOM



OPT. MASTER SPA BATH W/ FREE-STANDING TUB



OPT. MASTER BEDROOM FRENCH DOORS W/ EXTENDED COVERED PATIO



OPT. PET SPA

THIS PLAN'S PROJECTED **HERS® INDEX = 62***
 Projected Rating Based on Plans – Field Confirmation required

How does this floor plan rate?
 Take a look: **100** = Standard new home+ **130** = Typical resale Home++
 The lower number, the better! Refer to the RESNET® HERS index brochure or go to www.RESNET.us and www.HERSindex.com

What's a HERS® Index? HERS stands for Home Energy Rating System, a system created by RESNET® to measure home energy efficiency. A Projected HERS index or rating is a computer simulation performed prior to construction by a third-party HERS rater using RESNET-accredited rating software, rated feature and specification data derived from home plans, features and specifications, and other data selected or assumed by the rater. The projected HERS index is approximate and is subject to change without notice. Actual results will vary.