

THE RAVEN

Approx. 3,350 sq. ft. | 1 story | 3-4 bedrooms | 3-car garage | Plan #L33R



ELEVATION C

ABOUT THE RAVEN

The Raven welcomes you with a covered entry that leads past a flex room—adaptable as a guest suite—and an enchanting courtyard. You'll also appreciate a study, a great room with an adjacent covered patio, and a dining room with special access to a well-appointed kitchen. The kitchen features a walk-in pantry, eat-in island and breakfast nook. Three bedrooms include a luxurious master suite with two walk-in closets and a separate tub and shower.

COMMUNITY LOCATION:

Onyx Point at Summerlin | 6998 Aurastone Street | Las Vegas, NV 89135 | **702.638.4440**

*This information is presented for education purposes only. The HERS index for a confirmed rating will be determined by a third-party HERS rater based on data gathered from on-site observations and, if required, testing of rated features for a home as featured, optioned, located, oriented and/or built.

+Standard new home is based on the RESNET® Reference Home definition with a HERS® index of 100 (based on the 2006 International Energy Conservation Code).

++Typical resale home is based on the U.S. Department of Energy definition with a HERS® index of 130.

^RESNET® has developed the HERS® index to indicate the comparative efficiencies of homes. It is no guarantee that energy efficiencies will be achieved.



Floor plans and renderings are conceptual drawings and may vary from actual plans and homes as built. Options and features may not be available on all homes and are subject to change without notice. Actual homes may vary from photos and/or drawings which show upgraded landscaping and may not represent the lowest-priced homes in the community. Features may include optional upgrades and may not be available on all homes. Square footage numbers are approximate and are subject to change without notice. ©2019 Richmond American Homes. In Nevada, homes are offered by Richmond American Homes of Nevada, Inc. (Nevada Contractor License #0026417.) 6/18/2019

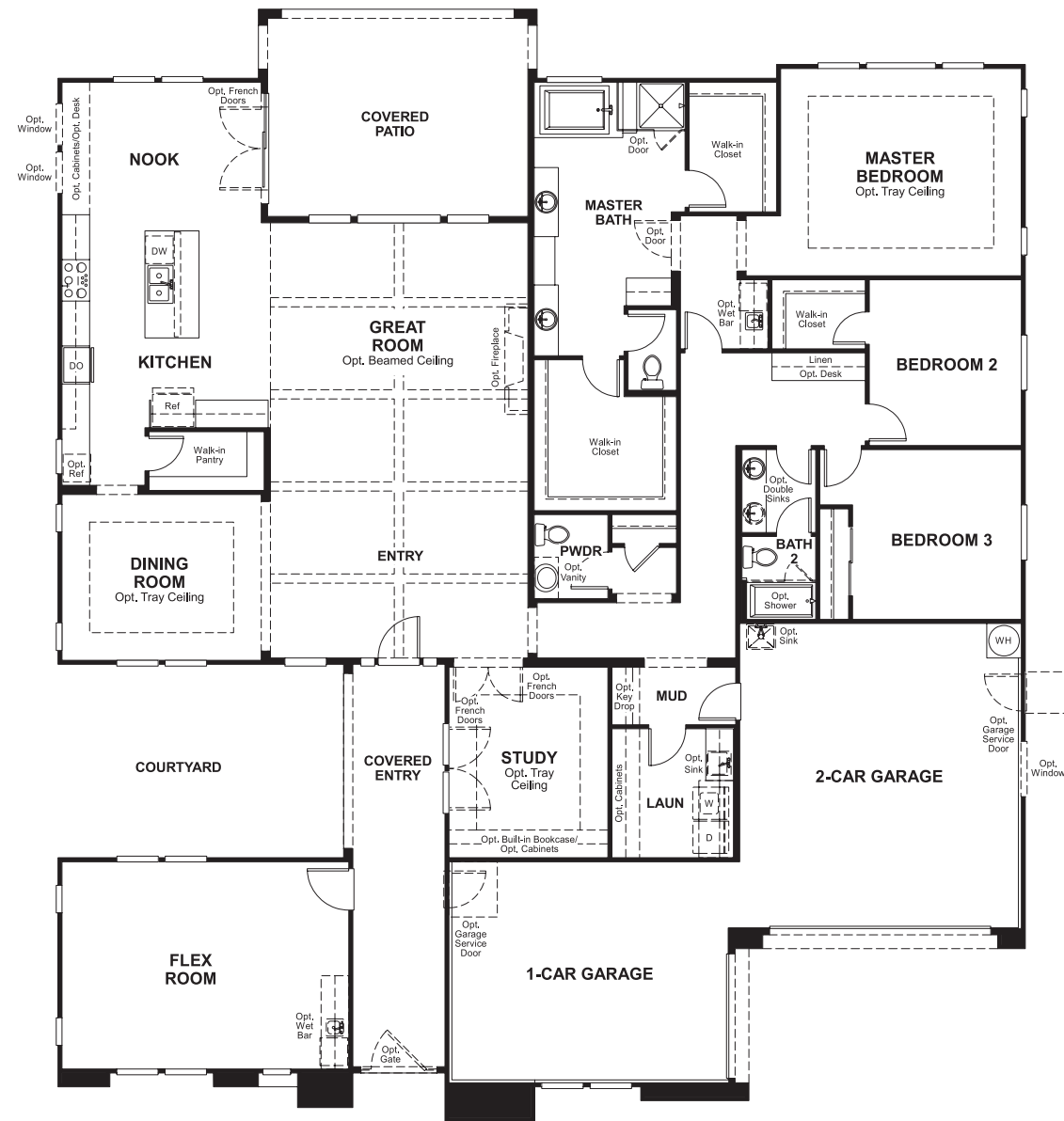


ELEVATION A

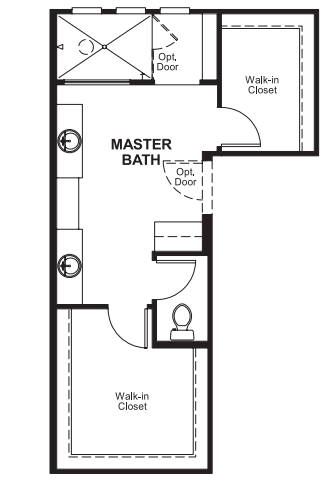


ELEVATION B

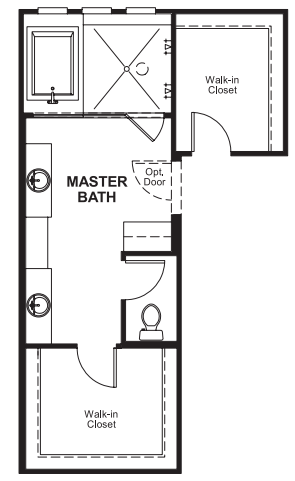
MAIN FLOOR



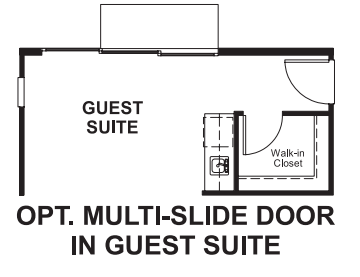
MAIN FLOOR OPTIONS



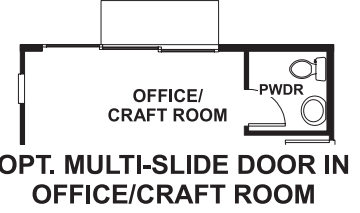
OPT. WALK-IN SHOWER



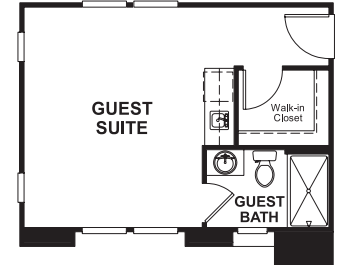
OPT. MASTER SPA BATH



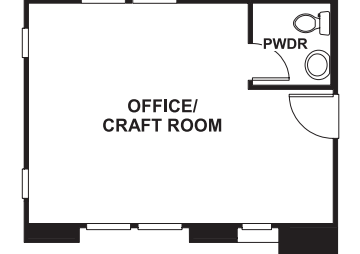
OPT. MULTI-SLIDE DOOR IN GUEST SUITE



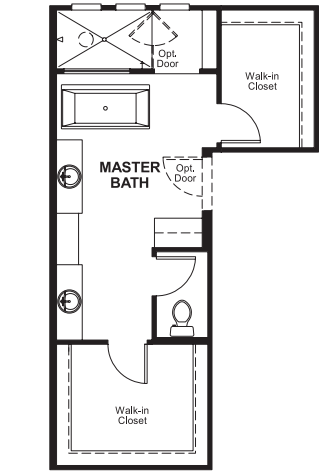
OPT. MULTI-SLIDE DOOR IN OFFICE/CRAFT ROOM



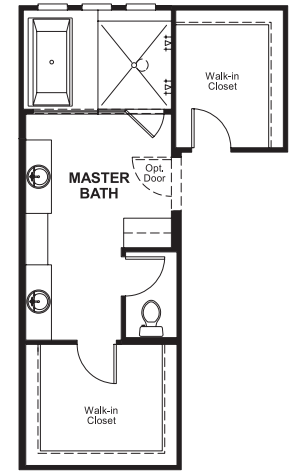
OPT. GUEST SUITE



OPT. OFFICE/CRAFT ROOM



OPT. WALK-IN SHOWER W/ FREE-STANDING TUB



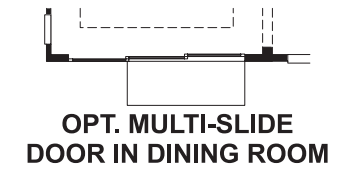
OPT. MASTER SPA BATH W/ FREE-STANDING TUB



OPT. PROFESSIONAL KITCHEN LITE



OPT. PROFESSIONAL KITCHEN



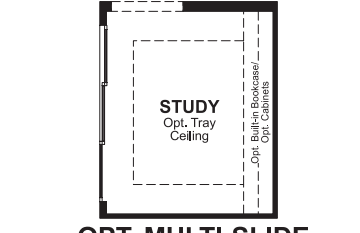
OPT. MULTI-SLIDE DOOR IN DINING ROOM



OPT. MULTI-SLIDE DOOR IN GREAT ROOM



OPT. MULTI-SLIDE DOOR IN FLEX ROOM



OPT. MULTI-SLIDE DOOR IN STUDY

THIS PLAN'S PROJECTED **HERS® INDEX = 63***
 Projected Rating Based on Plans – Field Confirmation required

How does this floor plan rate?
 Take a look: **100** = Standard new home+ **130** = Typical resale Home++
 The lower number, the better! Refer to the RESNET® HERS index brochure or go to www.RESNET.us and www.HERSindex.com

What's a HERS® Index? HERS stands for Home Energy Rating System, a system created by RESNET® to measure home energy efficiency. A Projected HERS index or rating is a computer simulation performed prior to construction by a third-party HERS rater using RESNET-accredited rating software, rated feature and specification data derived from home plans, features and specifications, and other data selected or assumed by the rater. The projected HERS index is approximate and is subject to change without notice. Actual results will vary.