

THE CITRINE

Approx. 1,850 sq. ft. | 3 to 4 bed | 2.5 bath | 2- to 3-car garage | Plan #J904



ELEVATION M

ABOUT THE CITRINE

Imagine your life in this two-story home. Breakfast at the spacious kitchen island or in the nearby dining room. Spend the afternoon in your quiet study. Host a movie night in the inviting great room. At the end of the day, retreat upstairs to the owner's suite, complete with a roomy walk-in closet and private bath. Upstairs, you will also enjoy two additional bedrooms, a convenient laundry and another full bath. A covered patio and a main-floor bedroom with a full bath are available options.



ELEVATION K



ELEVATION L

DESIGN CENTER LOCATION:

Jacksonville Home Gallery[™] | 10255 Fortune Parkway, Suite 150 | Jacksonville FL 32256 | **904.541.2555**

*This information is presented for educational purposes only. The HERS® index for a confirmed rating will be determined by a third-party HERS rater based on data gathered from on-site observations and, if required, testing of rated features for a home as featured, optioned, located, oriented and/or built.

**Standard new home is based on the RESNET® Reference Home definition with a HERS index of 100 (based on the 2006 International Energy Conservation Code).

***Typical resale home is based on the U.S. Department of Energy definition with a HERS index of 130.

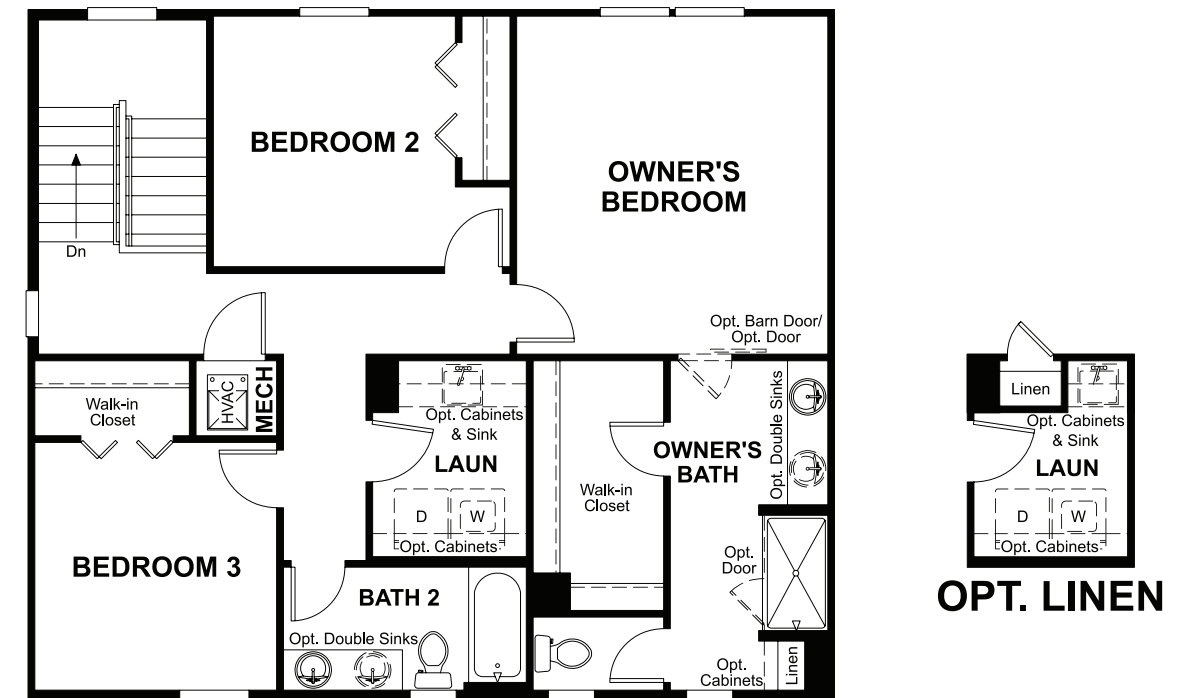
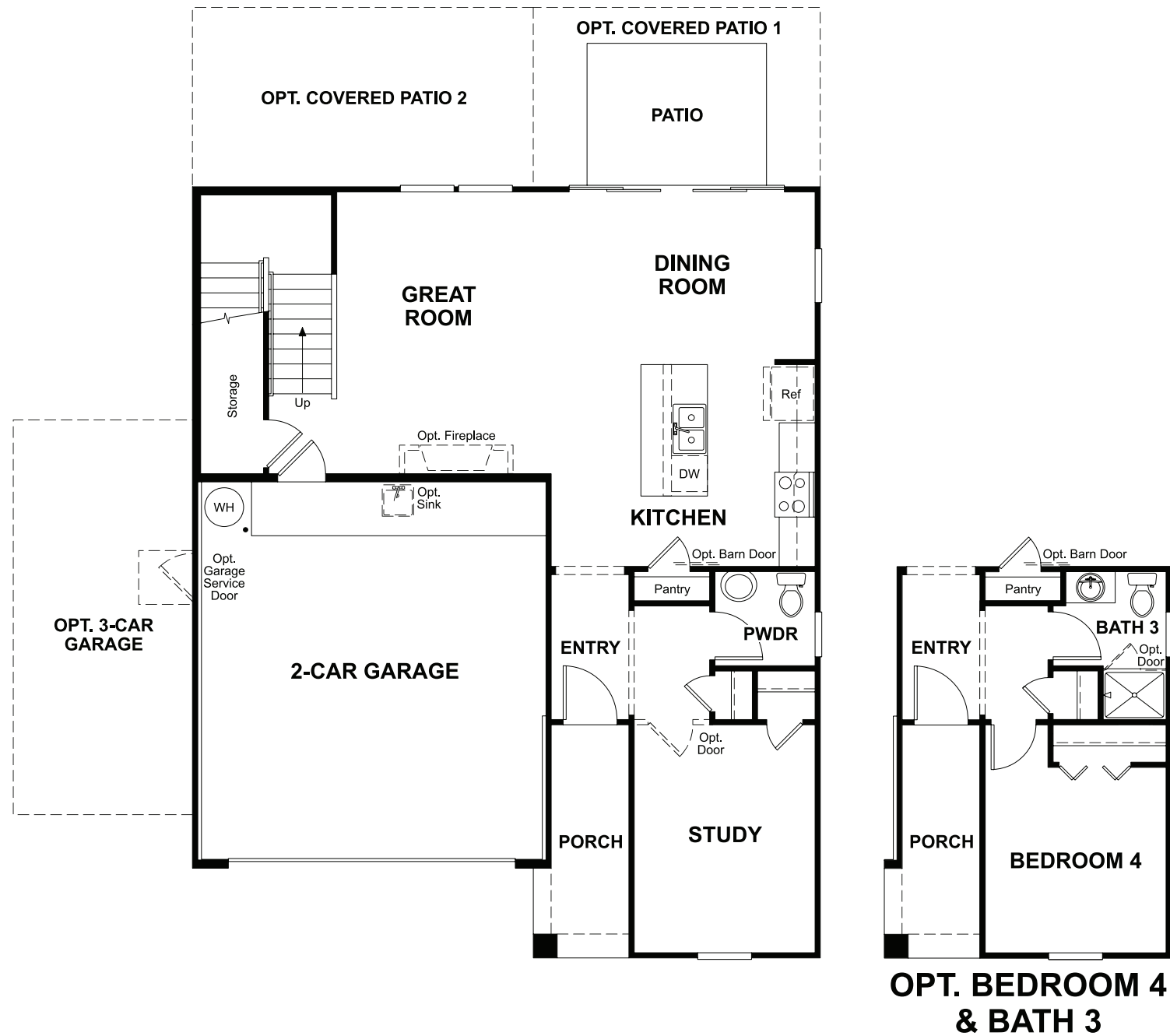
^RESNET has developed the HERS index to indicate the comparative efficiencies of homes. It is no guarantee that energy efficiencies will be achieved.



Floor plans and renderings are conceptual drawings and may vary from actual plans and homes as built. Options and features may not be available on all homes and are subject to change without notice. Actual homes may vary from photos and/or drawings which show upgraded landscaping and may not represent the lowest-priced homes in the community. Features may include optional upgrades and may not be available on all homes. Prices, specifications and availability are subject to change without notice. ©2021 Richmond American Homes, Richmond American Homes of Florida, LP, CBC1257429 10/20/2021

MAIN FLOOR

SECOND FLOOR



THIS PLAN'S PROJECTED
HERS® INDEX = 64*
Projected rating based on plans – field confirmation required

How does this floor plan rate?
Take a look: **100** = standard new home™ **130** = typical resale home™
The lower the number, the better! Refer to the RESNET® HERS index brochure
or go to RESNET.us and HERSindex.com

What's a HERS® index? HERS stands for Home Energy Rating System, a system created by RESNET® to measure home energy efficiency. ^
A projected HERS index or rating is a computer simulation performed prior to construction by a third-party HERS rater using RESNET-accredited rating software, rated feature and specification data derived from home plans, features and specifications, and other data selected or assumed by the rater. The projected HERS index is approximate and is subject to change without notice. Actual results will vary.