

Travis Park - I & II
RALEIGH



Elevation A

Available elevations:



Elevation B



Elevation C

Approx. square feet: 2,220

Stories: 1

Bedrooms: 3 - 5

Garage: 2-car

Plan Number: P741

You'll find plenty to love about the Raleigh plan, a versatile ranch-style home with a number of personalization options. Located off the entryway, a spacious study can also be optioned as a dining room, an extra bedroom and even a guest suite with a full bath and walk-in closet. The center of the home boasts a large kitchen with a convenient center island and walk-in pantry. The kitchen flows into an open-concept dining room and great room, which offers direct access to an inviting covered patio. From the great room, you can also make your way to two secondary bedrooms, as well as a secluded master suite with a private bath and walk-in closet. Additional options include a fifth bedroom in lieu of garage storage space, a gourmet kitchen with a butler's pantry or tech center, and two deluxe master bath layouts.



COMMUNITY LOCATION

372 North 159th Avenue
Goodyear, AZ 85338
623-587-9438

HOME GALLERY

16427 North Scottsdale Road, Suite 175
Scottsdale, AZ 85254
877-444-1485



COMMUNITY LOCATION

372 North 159th Avenue
Goodyear, AZ 85338
623-587-9438

HOME GALLERY

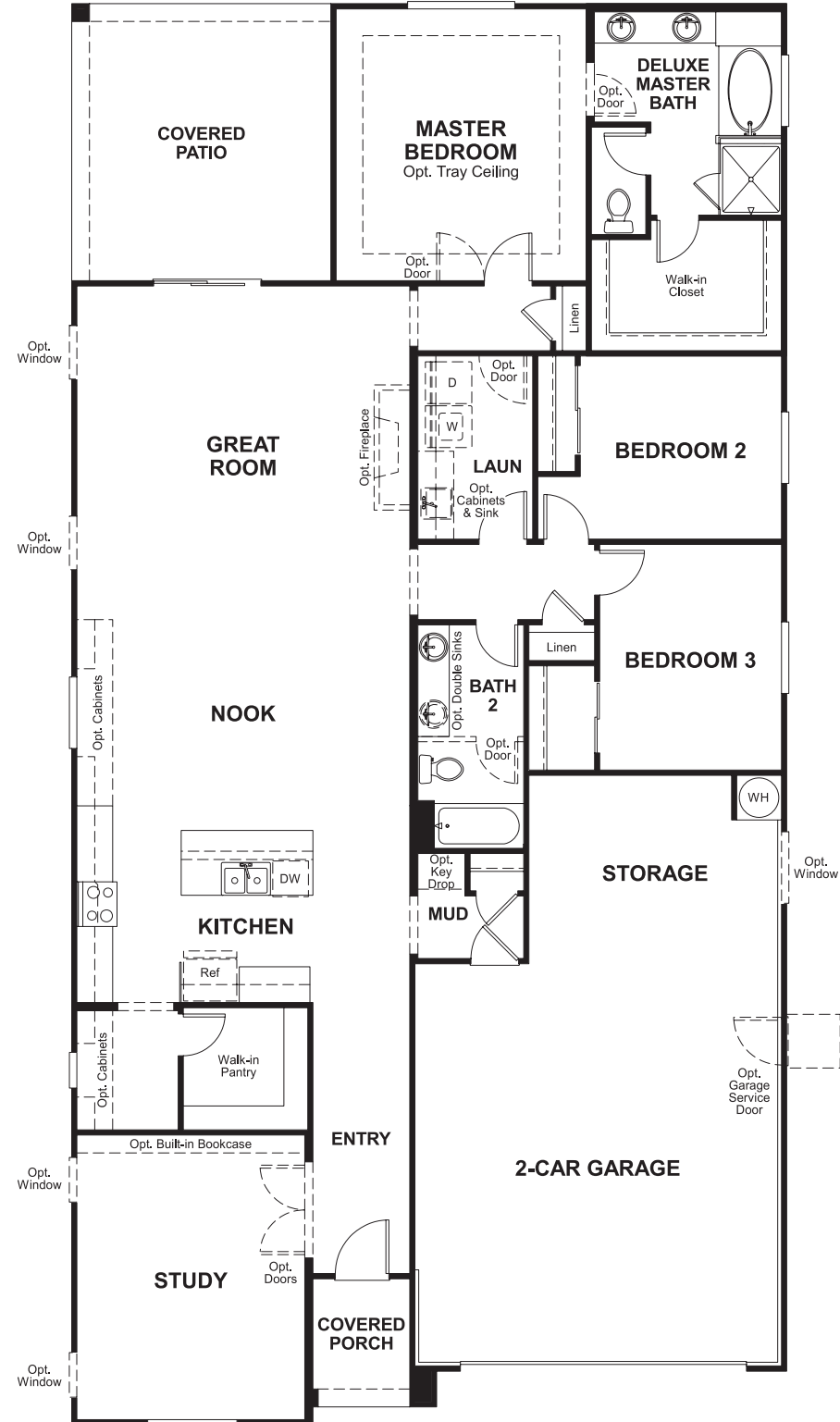
16427 North Scottsdale Road, Suite 175
Scottsdale, AZ 85254
877-444-1485

Travis Park - I & II
RALEIGH

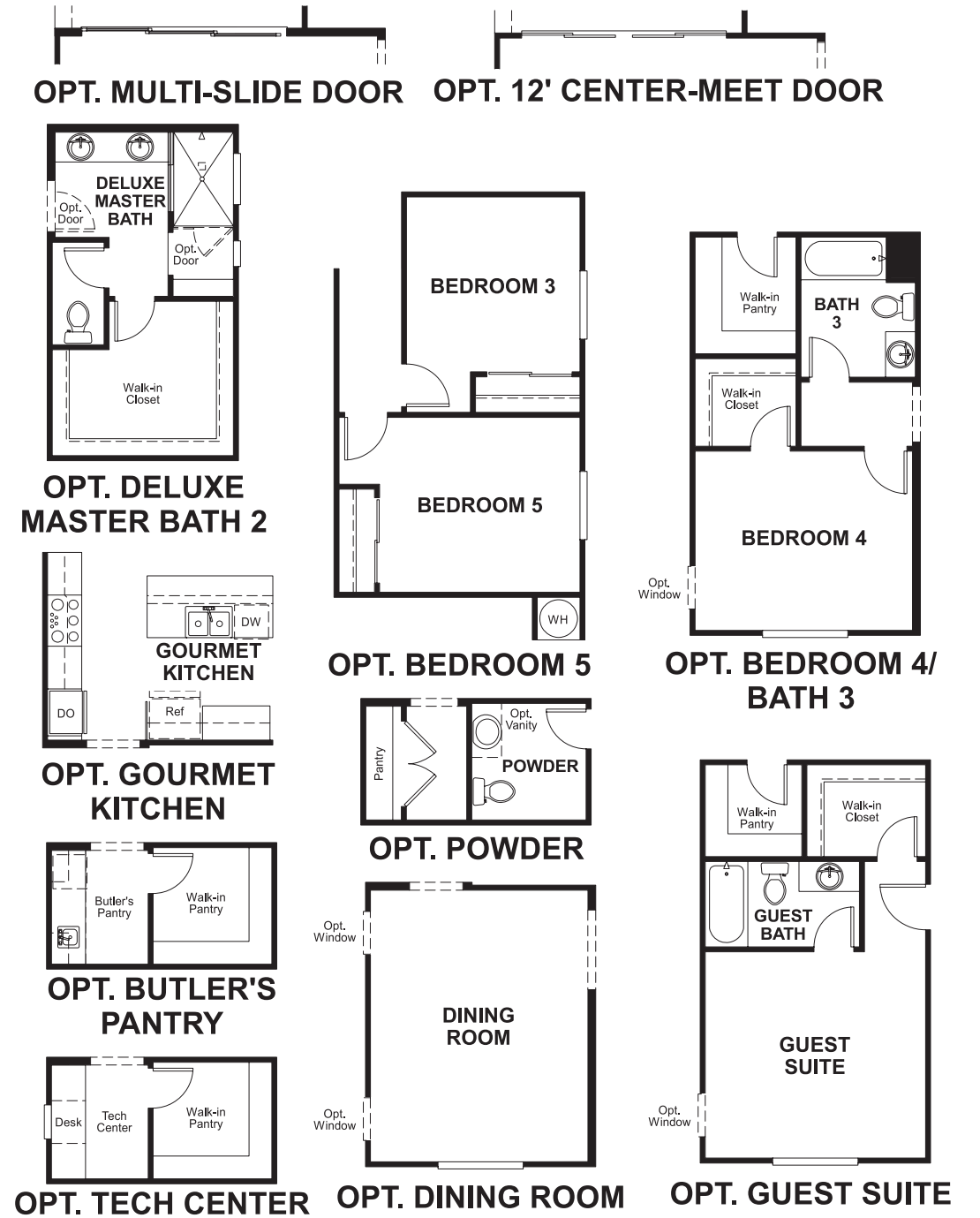
Approx. square feet: 2,220
Stories: 1
Bedrooms: 3 - 5

Garage: 2-car
Plan Number: P741

Floor Plan
Main Floor



Floor Plan
Main Floor Options



**THIS PLAN'S PROJECTED
HERS® INDEX = 64***
Projected Rating Based on Plans – Field Confirmation Required

How does this floor plan rate?
Take a look: **100** = Standard new home* **130** = Typical resale home**
The lower the number, the better! Refer to the RESNET® HERS index brochure or go to www.RESNET.us for details.

What's a HERS® Index? HERS stands for Home Energy Rating System, a system created by RESNET® to measure home energy efficiency.[^]
A Projected HERS index or rating is a computer simulation performed prior to construction by a third-party HERS rater using RESNET-accredited rating software, rated feature and specification data derived from home plans, features and specifications, and other data selected or assumed by the rater. The projected HERS index is approximate and is subject to change without notice. Actual results will vary.

*This information is presented for education purposes only. The HERS index for a confirmed rating will be determined by a third-party HERS rater based on data gathered from on-site observations and, if required, testing of rated features for a home as featured, optioned, located, oriented and/or built.
+Standard new home is based on the RESNET® Reference Home definition with a HERS® index of 100 (based on the 2006 International Energy Conservation Code).
++Typical resale home is based on the U.S. Department of Energy definition with a HERS® index of 130.

[^]RESNET® has developed the HERS® index to indicate the comparative efficiencies of homes. It is no guarantee that energy efficiencies will be achieved.