

THE PEARL

Approx. 2,350 sq. ft. | 2 stories | 3-5 bedrooms | 2-car garage | Plan #J913



ELEVATION M

ABOUT THE PEARL

The Pearl plan offers two stories of thoughtful living space. A large kitchen provides a panoramic view of the main floor—overlooking an elegant dining room and a generous great room. This home will be built with either a study or an extra bedroom. Upstairs, a lavish primary suite offers a roomy walk-in closet and an attached bath. The second floor will be built with either a loft or an additional bedroom. A charming covered patio will be included on select homesites. Designer curated finishes complete this home!



ELEVATION K



ELEVATION L

*This information is presented for educational purposes only. The HERS® index for a confirmed rating will be determined by a third-party HERS rater based on data gathered from on-site observations and, if required, testing of rated features for a home as featured, optioned, located, oriented and/or built.

**Standard new home is based on the RESNET® Reference Home definition with a HERS index of 100 (based on the 2006 International Energy Conservation Code).

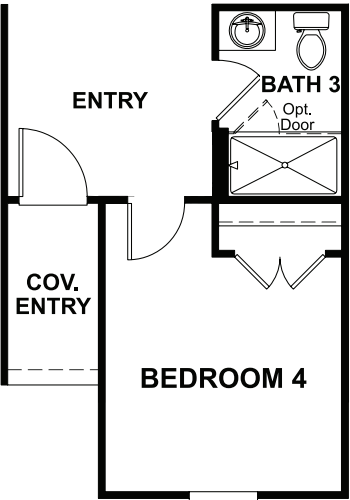
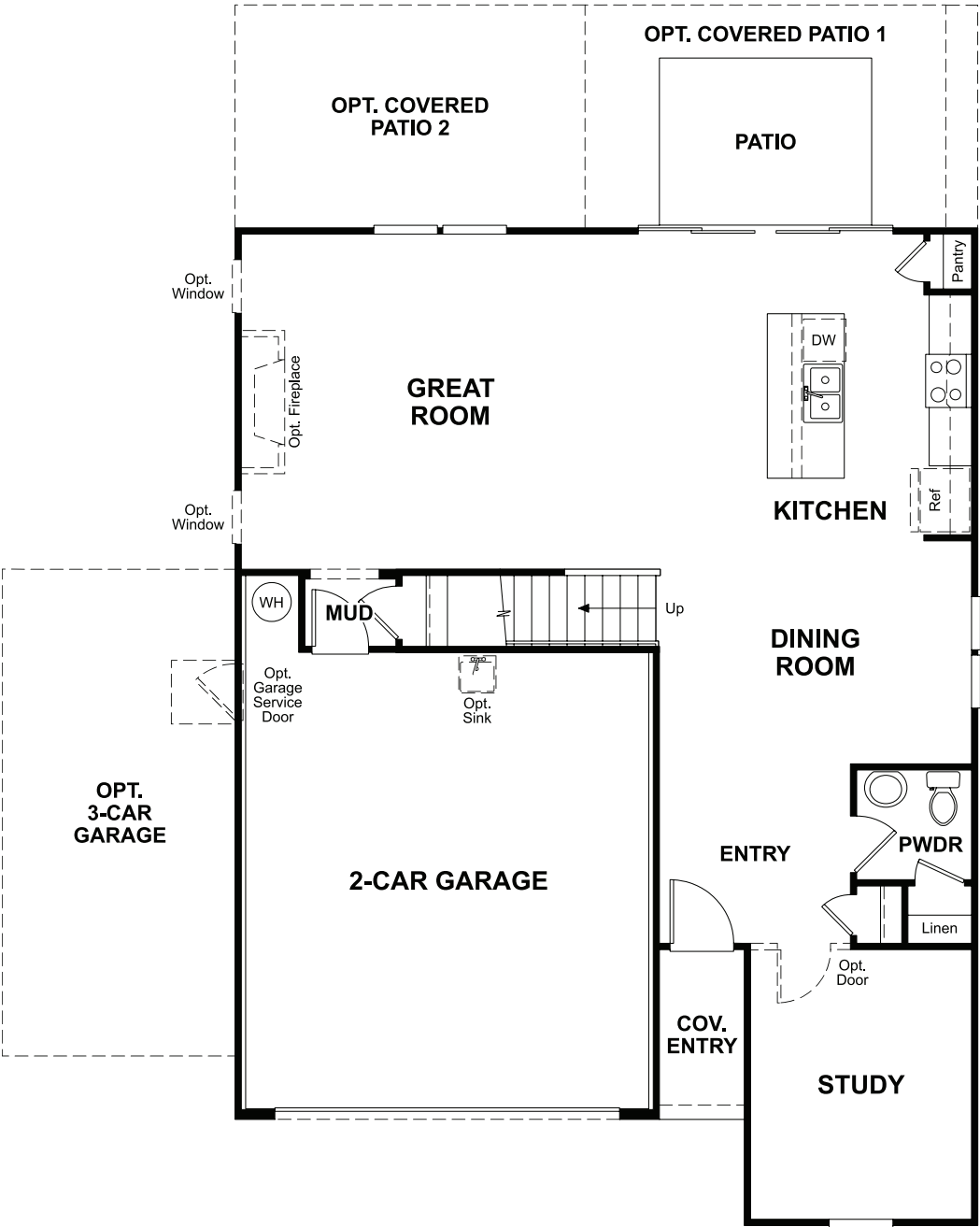
***Typical resale home is based on the U.S. Department of Energy definition with a HERS index of 130.

^RESNET has developed the HERS index to indicate the comparative efficiencies of homes. It is no guarantee that energy efficiencies will be achieved.

Floor plans and renderings are conceptual drawings and may vary from actual plans and homes as built. Options and features may not be available on all homes and are subject to change without notice. Actual homes may vary from photos and/or drawings which show upgraded landscaping and may not represent the lowest-priced homes in the community. Features may include optional upgrades and may not be available on all homes. Prices, specifications and availability are subject to change without notice. Square footage is approximate and subject to change without notice. ©2024 Richmond American Homes, Richmond American Homes of Florida, LP, CBC1257429 03/22/2024 JAX

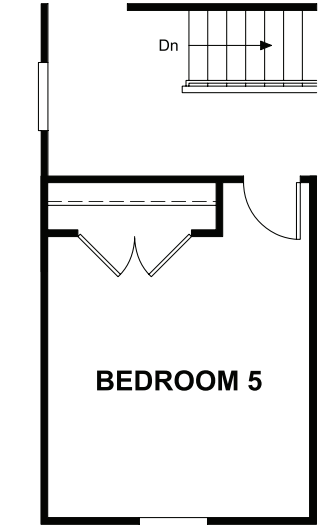


MAIN FLOOR

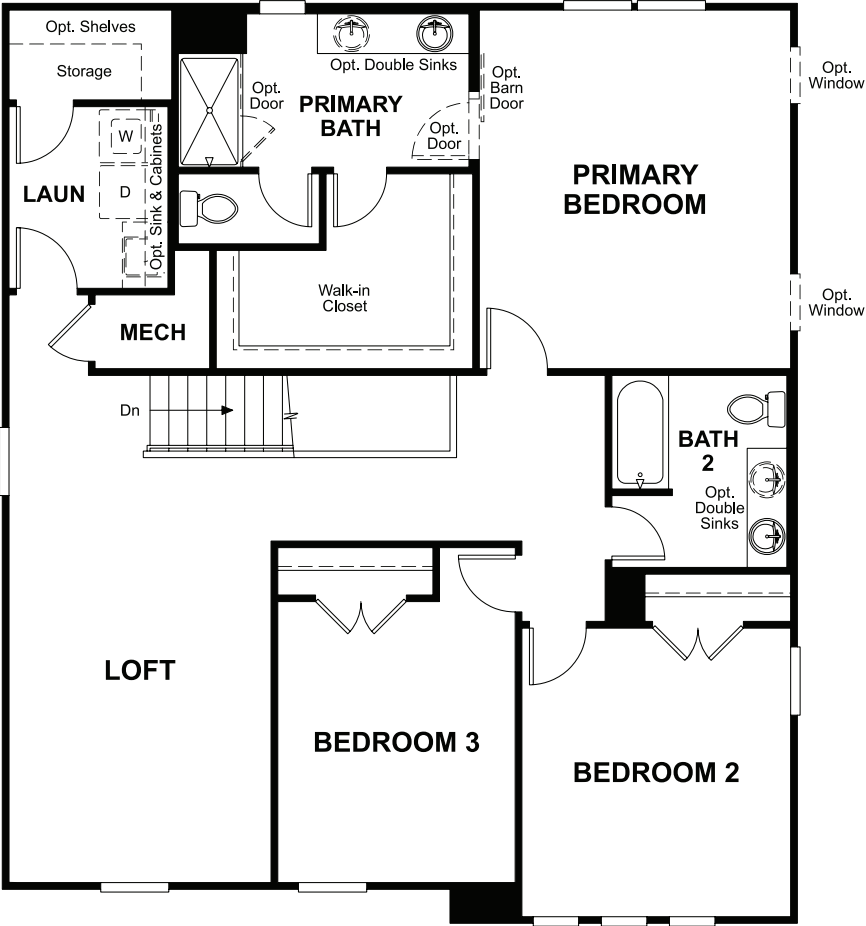


OPT. BEDROOM 4 - BATHROOM COMBINATION

SECOND FLOOR



OPT. BEDROOM 5



THIS PLAN'S PROJECTED
HERS® INDEX = 61 *

How does this floor plan rate?
Take a look: **100** = standard new home™ **130** = typical resale home™
The lower the number, the better! Refer to the RESNET® HERS index brochure
or go to **RESNET.us** and **HERSindex.com**

What's a HERS® index? HERS stands for Home Energy Rating System, a system created by RESNET® to measure home energy efficiency.^
A projected HERS index or rating is a computer simulation performed prior to construction by a third-party HERS rater using RESNET-accredited rating software, rated feature and specification data derived from home plans, features and specifications, and other data selected or assumed by the rater. The projected HERS index is approximate and is subject to change without notice. Actual results will vary.