

Desert Oasis  
**PAULSON**



**Elevation A**

**Approx. square feet:** 2,650

**Stories:** 2

**Bedrooms:** 3 - 5

**Garage:** 3-car

**Plan Number:** P773

A 48' attached RV garage—plus a separate 2-car garage—provides an abundance of versatile storage space to suit your lifestyle. Main-floor highlights include a flex room, a covered patio and an accommodating kitchen that overlooks a dining area and great room. Upstairs, a sizable loft offers a variety of uses. You'll also find three bedrooms—all with walk-in closets—including a large master suite with multiple deluxe bath options. Personalize this plan with an extended covered patio and gourmet kitchen features.

**Available elevations:**



**Elevation B**



**Elevation C**

**COMMUNITY LOCATION**

17278 West Straight Arrow Lane  
Surprise, AZ 85387  
480-624-0244

**HOME GALLERY**

16427 North Scottsdale Road, Suite 175  
Scottsdale, AZ 85254  
877-444-1485



**COMMUNITY LOCATION**

17278 West Straight Arrow Lane  
Surprise, AZ 85387  
480-624-0244

**HOME GALLERY**

16427 North Scottsdale Road, Suite 175  
Scottsdale, AZ 85254  
877-444-1485

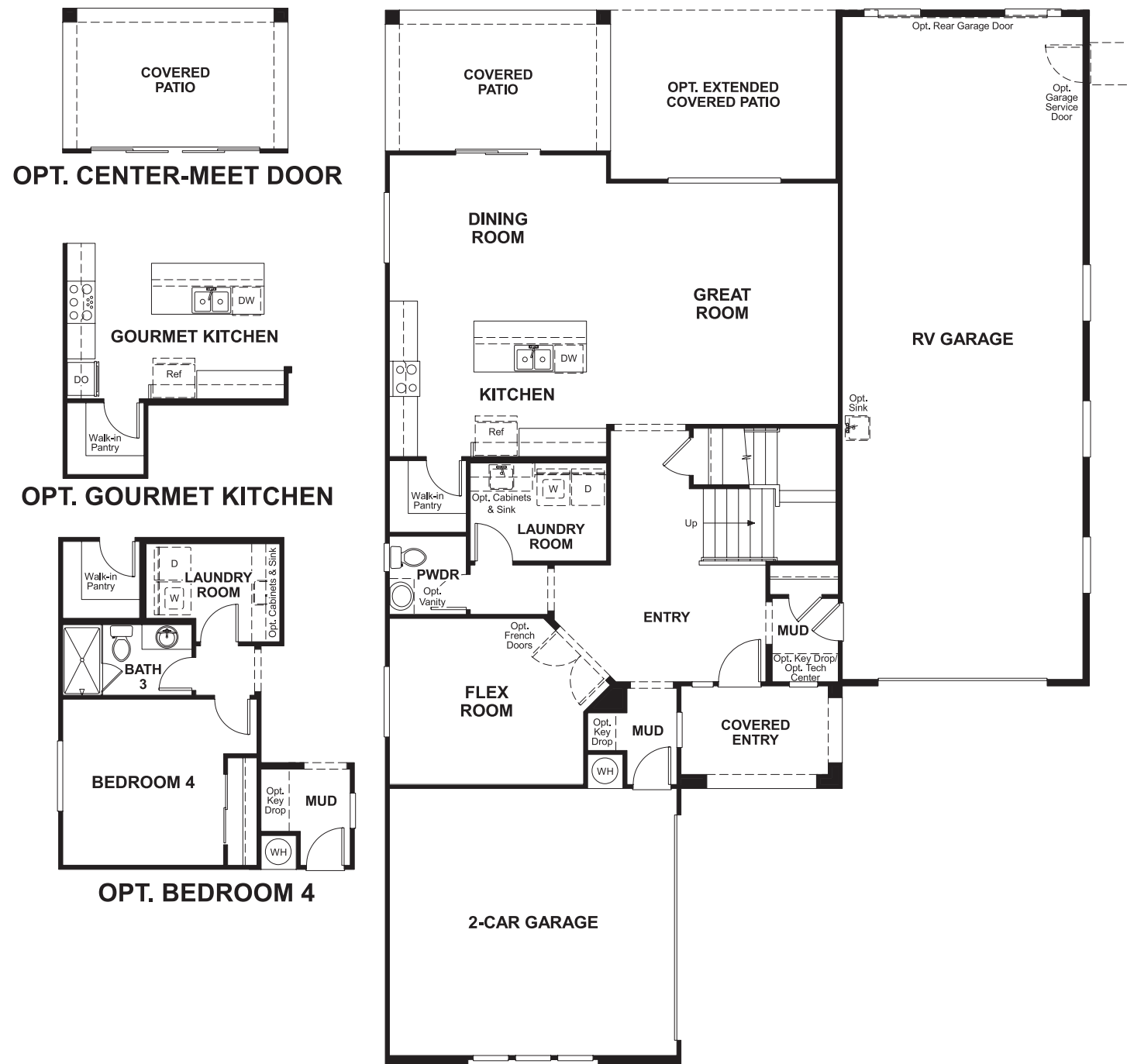


Desert Oasis  
**PAULSON**

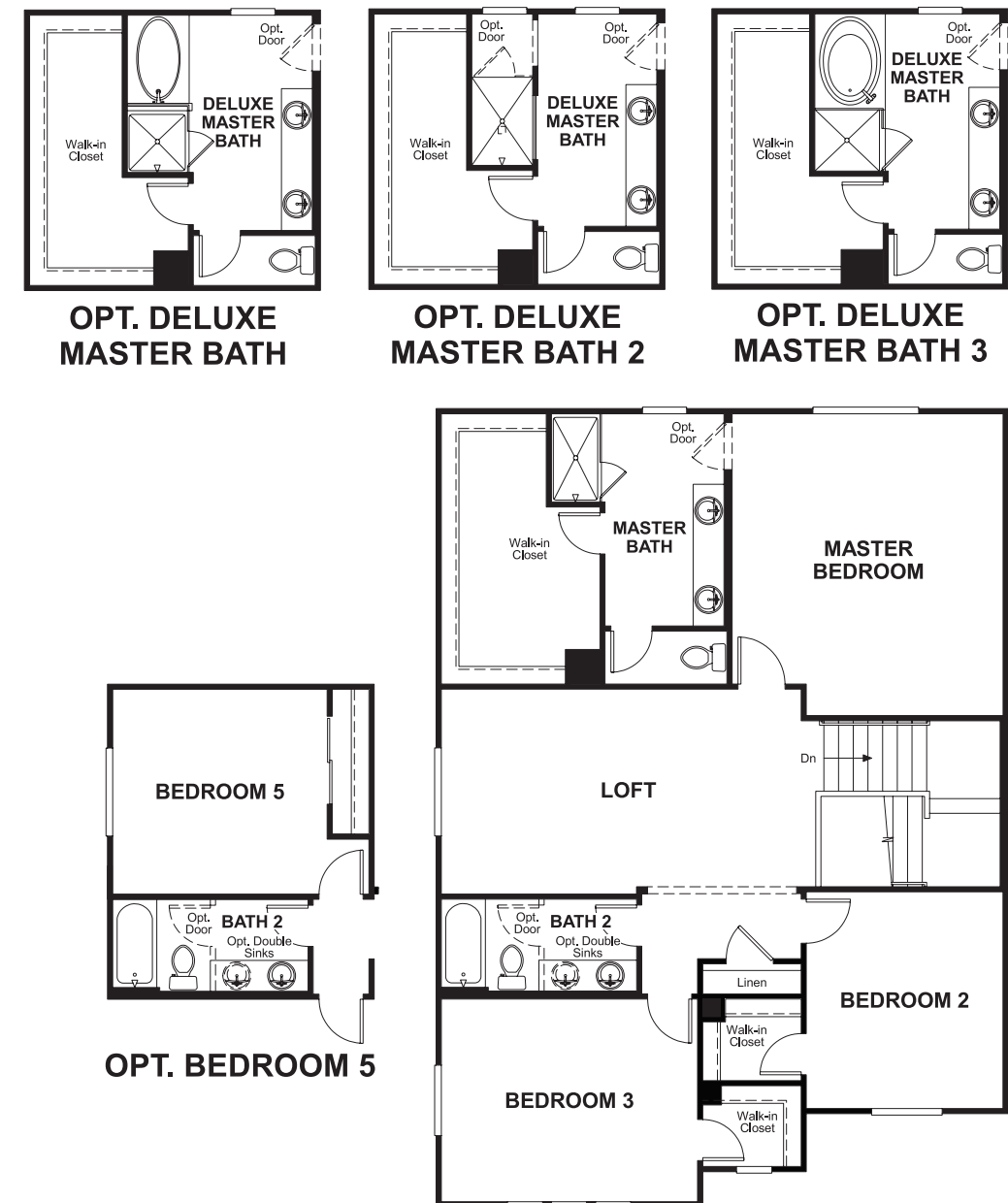
Approx. square feet: 2,650  
Stories: 2  
Bedrooms: 3 - 5

Garage: 3-car  
Plan Number: P773

**Floor Plan**  
Main Floor



**Floor Plan**  
Second Floor



**THIS PLAN'S PROJECTED  
HERS® INDEX = 60\***  
Projected Rating Based on Plans – Field Confirmation Required

**How does this floor plan rate?**  
Take a look: **100** = Standard new home\* **130** = Typical resale home\*\*  
The lower the number, the better! Refer to the RESNET® HERS index brochure or go to [www.RESNET.us](http://www.RESNET.us) for details.

**What's a HERS® Index?** HERS stands for Home Energy Rating System, a system created by RESNET® to measure home energy efficiency.<sup>^</sup>  
A Projected HERS index or rating is a computer simulation performed prior to construction by a third-party HERS rater using RESNET-accredited rating software, rated feature and specification data derived from home plans, features and specifications, and other data selected or assumed by the rater. The projected HERS index is approximate and is subject to change without notice. Actual results will vary.

\*This information is presented for education purposes only. The HERS index for a confirmed rating will be determined by a third-party HERS rater based on data gathered from on-site observations and, if required, testing of rated features for a home as featured, optioned, located, oriented and/or built.  
+Standard new home is based on the RESNET® Reference Home definition with a HERS® index of 100 (based on the 2006 International Energy Conservation Code).  
++Typical resale home is based on the U.S. Department of Energy definition with a HERS® index of 130.

<sup>^</sup>RESNET® has developed the HERS® index to indicate the comparative efficiencies of homes. It is no guarantee that energy efficiencies will be achieved.