

Desert Oasis
HARLEY



Elevation A

Approx. square feet: 2,740

Stories: 1

Bedrooms: 3 - 4

Garage: 3-car

Plan Number: P776

Entertaining is easy in the ranch-style Harley plan, which boasts a well-appointed kitchen with a walk-in pantry, center island and breakfast nook, and an adjacent great room overlooking a relaxing covered patio. A quiet study can be optioned as an extra bedroom or formal dining room, and a spacious master suite with attached bath and walk-in closet is separated from two additional bedrooms for privacy. Both a 2-car garage and an RV garage are included. Personalize this plan with an optional gourmet kitchen, dining room and more!

Available elevations:



Elevation B



Elevation C

COMMUNITY LOCATION

172⁷⁸ West Straight Arrow Lane
Surprise, AZ 85387
480-624-0244

HOME GALLERY

16427 North Scottsdale Road, Suite 175
Scottsdale, AZ 85254
877-444-1485



COMMUNITY LOCATION

172⁷⁸ West Straight Arrow Lane
Surprise, AZ 85387
480-624-0244

HOME GALLERY

16427 North Scottsdale Road, Suite 175
Scottsdale, AZ 85254
877-444-1485

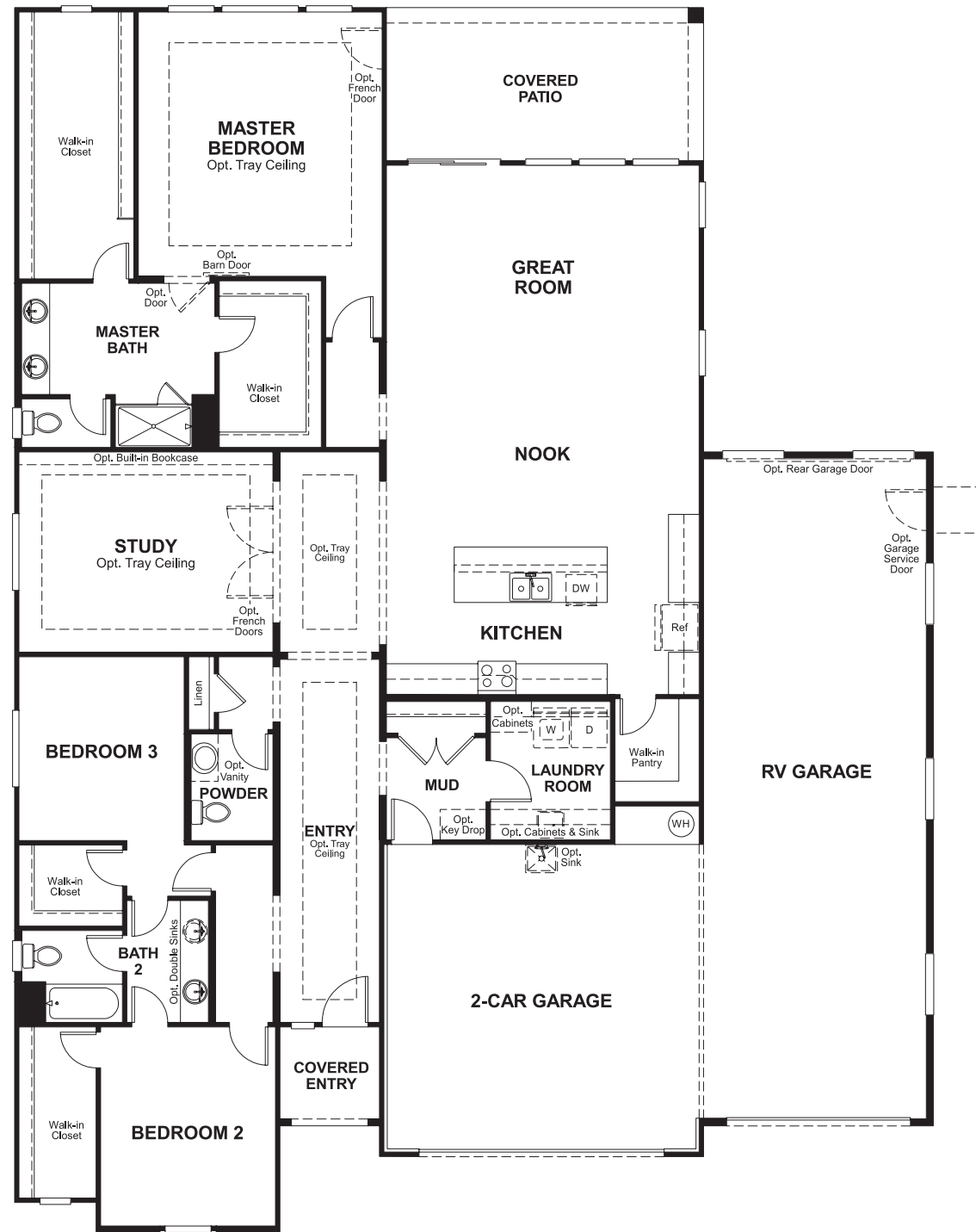


Desert Oasis
HARLEY

Approx. square feet: 2,740
Stories: 1
Bedrooms: 3 - 4

Garage: 3-car
Plan Number: P776

Floor Plan
Main Floor



Floor Plan
Main Floor Options



**THIS PLAN'S PROJECTED
HERS® INDEX = 59***
Projected Rating Based on Plans – Field Confirmation Required

How does this floor plan rate?
Take a look: **100** = Standard new home* **130** = Typical resale home**
The lower the number, the better! Refer to the RESNET® HERS index brochure or go to www.RESNET.us for details.

What's a HERS® Index? HERS stands for Home Energy Rating System, a system created by RESNET® to measure home energy efficiency. A Projected HERS index or rating is a computer simulation performed prior to construction by a third-party HERS rater using RESNET-accredited rating software, rated feature and specification data derived from home plans, features and specifications, and other data selected or assumed by the rater. The projected HERS index is approximate and is subject to change without notice. Actual results will vary.

*This information is presented for education purposes only. The HERS index for a confirmed rating will be determined by a third-party HERS rater based on data gathered from on-site observations and, if required, testing of rated features for a home as featured, optioned, located, oriented and/or built.
+Standard new home is based on the RESNET® Reference Home definition with a HERS® index of 100 (based on the 2006 International Energy Conservation Code).
++Typical resale home is based on the U.S. Department of Energy definition with a HERS® index of 130.

^RESNET® has developed the HERS® index to indicate the comparative efficiencies of homes. It is no guarantee that energy efficiencies will be achieved.