

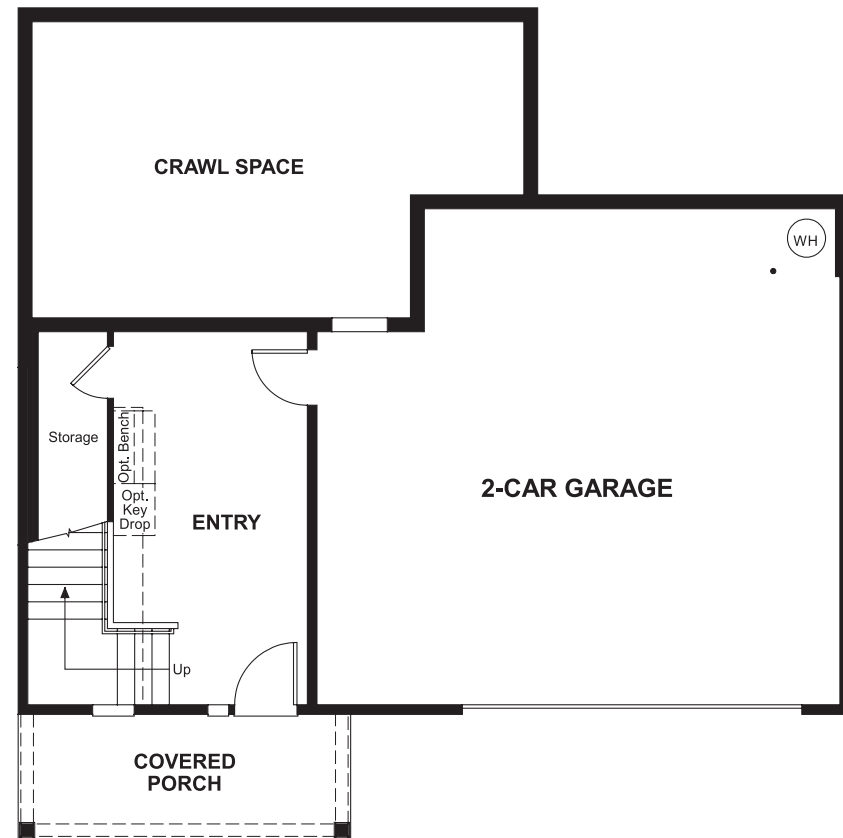
Calla Crest
SYBIL

Approx. square feet: 2,750
Stories: 3
Bedrooms: 3 - 5

Garage: 2-car
Plan Number: W720

Calla Crest
SYBIL

Floor Plan
Lower Floor



Elevation C

Available elevations:



Elevation C



Elevation D



Elevation E

Approx. square feet: 2,750
Stories: 3
Bedrooms: 3 - 5
Garage: 2-car
Plan Number: W720

The first floor of the inviting Sybil plan features a spacious entry with optional key drop and a convenient 2-car garage. On the main floor, you'll find an open great room with a fireplace, a gourmet kitchen with a center island and adjacent dining area and a private study that can be optioned as an extra bedroom. You'll also appreciate a relaxing covered patio. Upstairs, discover a laundry, a large loft and three generous bedrooms, including an elegant master suite with an expansive walk-in closet and attached bath. Personalize this plan with a chef's kitchen, deluxe master bath and more!

COMMUNITY LOCATION
30125 61st Avenue South
Auburn, WA 98001
253-536-3989

HOME GALLERY
20829 72nd Avenue South, Suite 115
Kent, WA 98032
253-446-7277



COMMUNITY LOCATION
30125 61st Avenue South
Auburn, WA 98001
253-536-3989

HOME GALLERY
20829 72nd Avenue South, Suite 115
Kent, WA 98032
253-446-7277

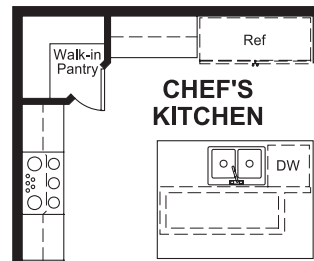


Calla Crest
SYBIL

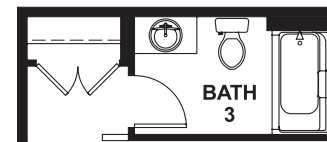
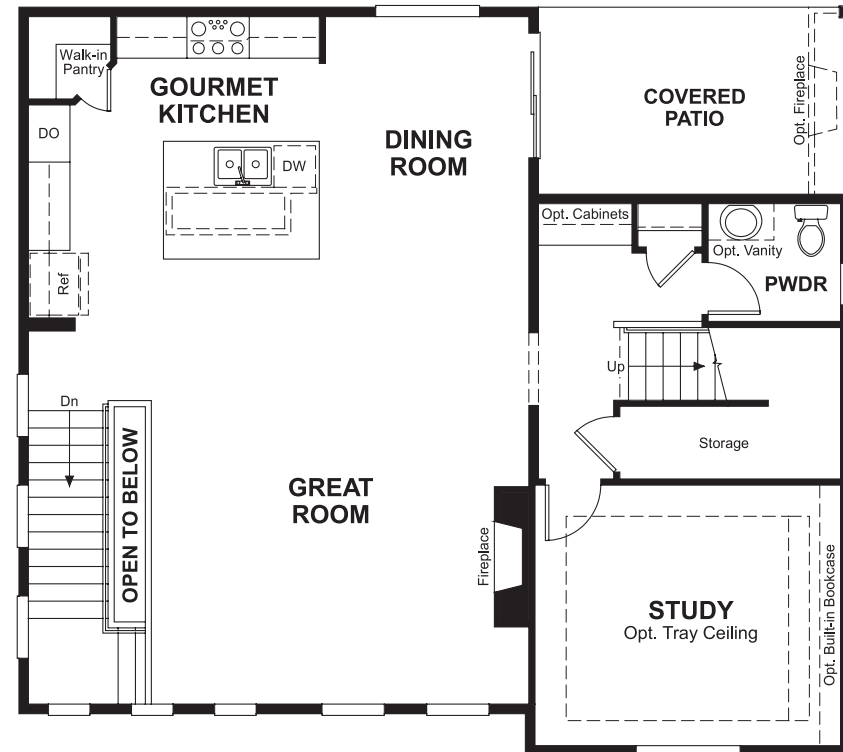
Approx. square feet: 2,750
Stories: 3
Bedrooms: 3 - 5

Garage: 2-car
Plan Number: W720

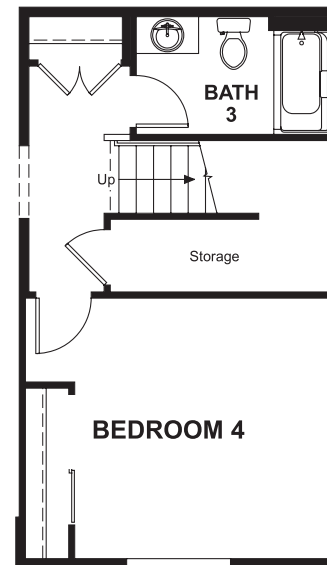
Floor Plan
Main Floor



OPT. CHEF'S KITCHEN

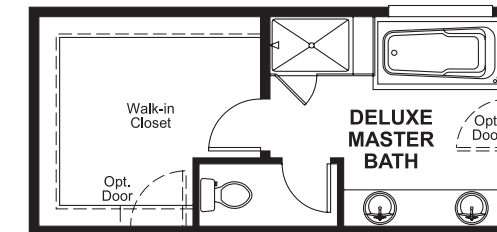


OPT. BATH 3

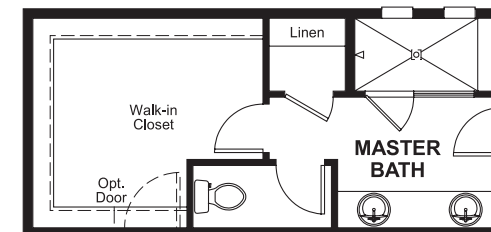


OPT. BEDROOM 4 - BATHROOM COMBINATION

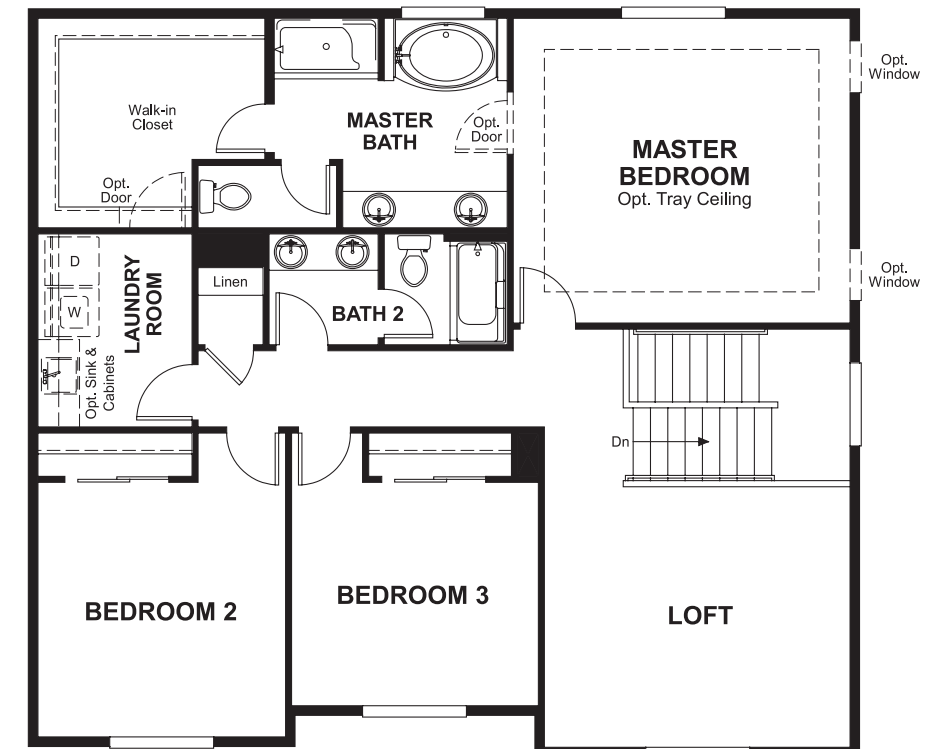
Floor Plan
Second Floor



OPT. DELUXE MASTER BATH



OPT. WALK-IN SHOWER



OPT. BEDROOM 5

THIS PLAN'S PROJECTED HERS® INDEX = 52*
Projected Rating Based on Plans – Field Confirmation Required

How does this floor plan rate?
Take a look: **100** = Standard new home* **130** = Typical resale home**
The lower the number, the better! Refer to the RESNET® HERS index brochure or go to www.RESNET.us for details.

What's a HERS® Index? HERS stands for Home Energy Rating System, a system created by RESNET® to measure home energy efficiency. A Projected HERS index or rating is a computer simulation performed prior to construction by a third-party HERS rater using RESNET-accredited rating software, rated feature and specification data derived from home plans, features and specifications, and other data selected or assumed by the rater. The projected HERS index is approximate and is subject to change without notice. Actual results will vary.

*This information is presented for education purposes only. The HERS index for a confirmed rating will be determined by a third-party HERS rater based on data gathered from on-site observations and, if required, testing of rated features for a home as featured, optioned, located, oriented and/or built.
+Standard new home is based on the RESNET® Reference Home definition with a HERS® index of 100 (based on the 2006 International Energy Conservation Code).
++Typical resale home is based on the U.S. Department of Energy definition with a HERS® index of 130.

^RESNET® has developed the HERS® index to indicate the comparative efficiencies of homes. It is no guarantee that energy efficiencies will be achieved.