

# THE PEARCE

Approx. 2,980 sq. ft. | 3 to 5 bedrooms | 2.5 to 3 baths | 3-car garage | Plan #J774



ELEVATION M

## ABOUT THE PEARCE

The entry of the versatile Pearce floor plan opens into a flex space, which can be personalized as an additional bedroom. The open layout of the rest of the main floor flows from a formal dining area and expansive great room to a large kitchen with a convenient island. If you choose to add a covered patio, you can personalize further with elegant, center-meet doors. The second floor offers an owner's suite with an oversized walk-in closet, and the attached bathroom can be optioned with a walk-in shower or a separate shower and soaking tub. Two more bedrooms flank a full bathroom, and a loft space can be optioned as an additional bedroom and bathroom. Other highlights include an attached two-car garage and RV garage.

## HOME GALLERY LOCATION:

Jacksonville Home Gallery™ | 10255 Fortune Parkway, Suite 150 | Jacksonville, FL 32256 | 904.541.2555

\*This information is presented for education purposes only. The HERS index for a confirmed rating will be determined by a third-party HERS rater based on data gathered from on-site observations and, if required, testing of rated features for a home as featured, optioned, located, oriented and/or built.

+Standard new home is based on the RESNET® Reference Home definition with a HERS® index of 100 (based on the 2006 International Energy Conservation Code).

++Typical resale home is based on the U.S. Department of Energy definition with a HERS® index of 130.

^RESNET® has developed the HERS® index to indicate the comparative efficiencies of homes. It is no guarantee that energy efficiencies will be achieved.

Floor plans and renderings are conceptual drawings and may vary from actual plans and homes as built. Options and features may not be available on all homes and are subject to change without notice. Actual homes may vary from photos and/or drawings which show upgraded landscaping and may not represent the lowest-priced homes in the community. Features may include optional upgrades and may not be available on all homes. Square footage numbers are approximate and are subject to change without notice. ©2021 Richmond American Homes, Richmond American Homes of Florida, LP, CBC1257429 2/24/2021



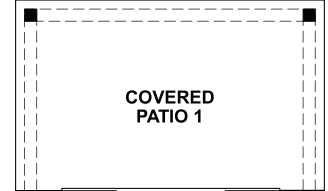
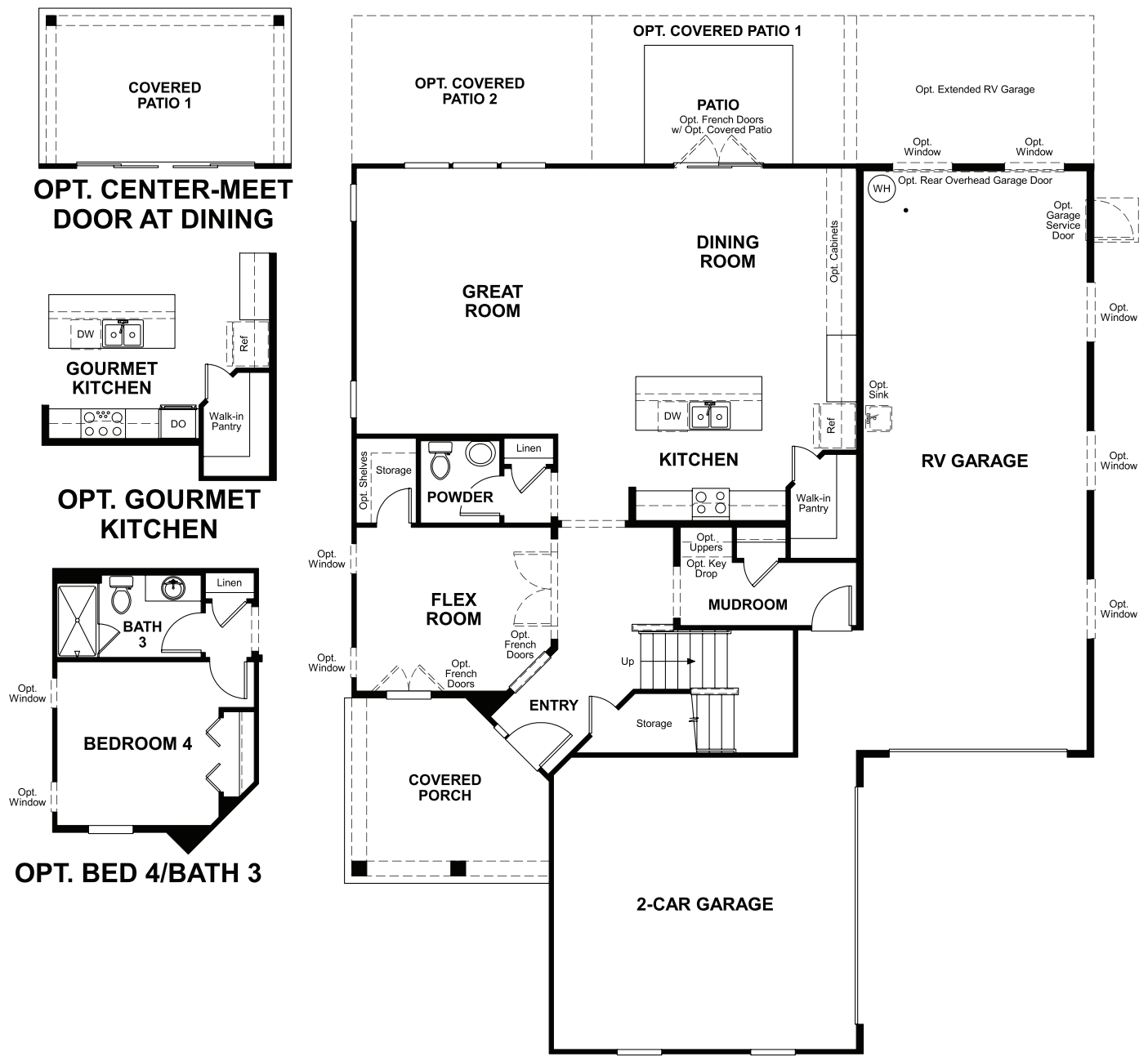
ELEVATION K



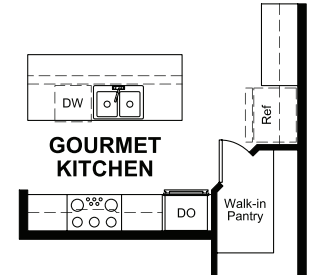
ELEVATION L

MAIN FLOOR

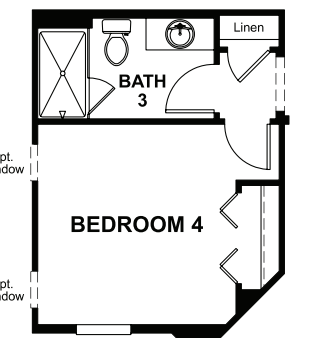
SECOND FLOOR



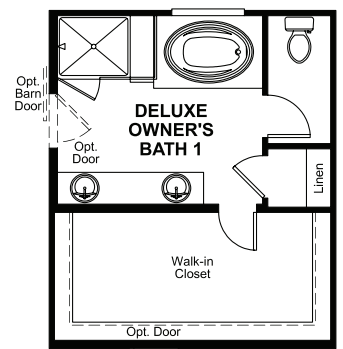
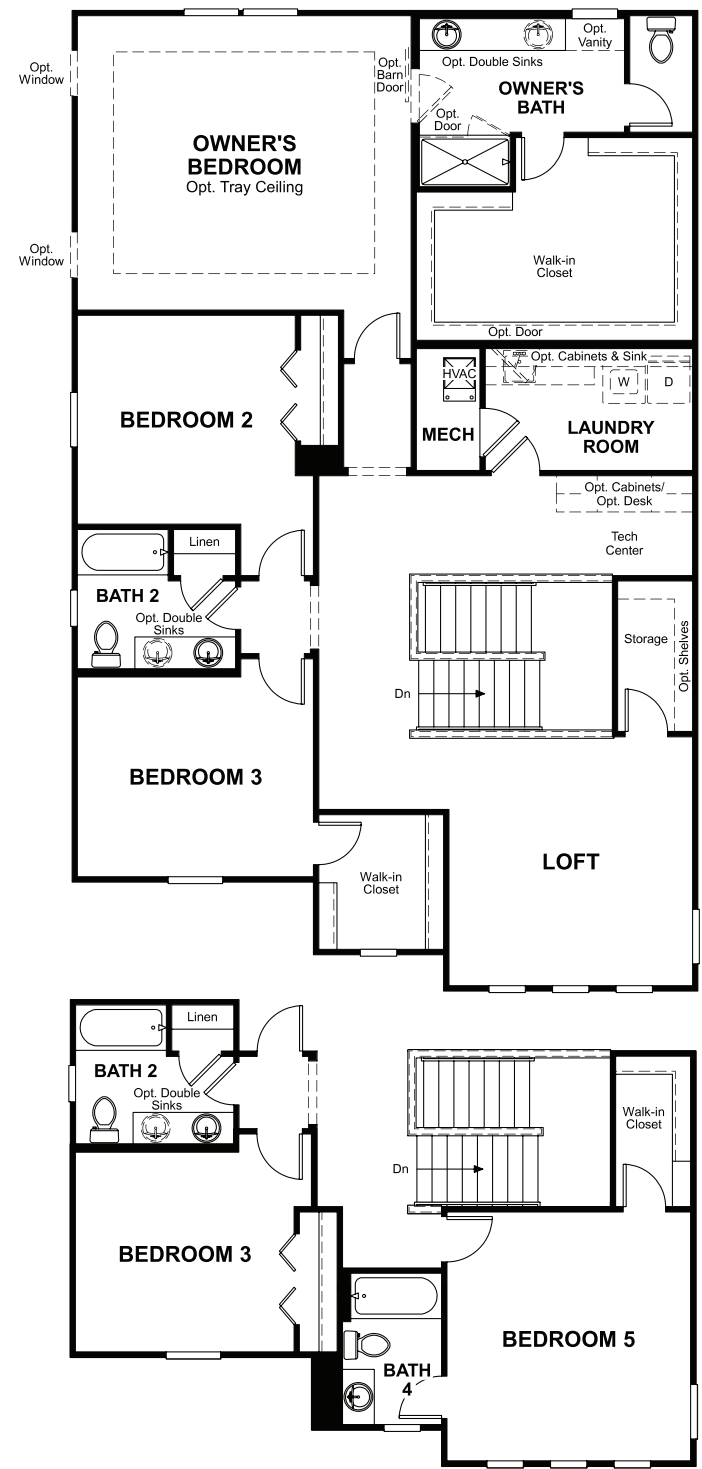
OPT. CENTER-MEET DOOR AT DINING



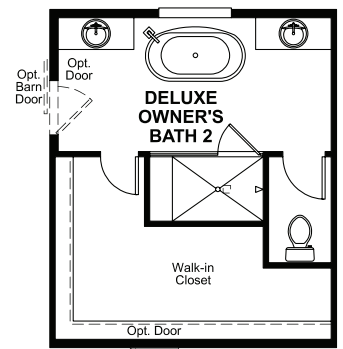
OPT. GOURMET KITCHEN



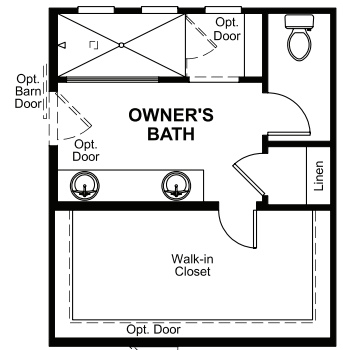
OPT. BED 4/BATH 3



OPT. DELUXE OWNER'S BATH #1



OPT. DELUXE OWNER'S BATH #2



OPT. OWNER'S BATH WALK-IN SHOWER

OPT. BED 5/BATH 4

THIS PLAN'S PROJECTED **HERS® INDEX = 62\***  
 Projected Rating Based on Plans – Field Confirmation required

**How does this floor plan rate?**  
 Take a look: **100** = Standard new home+ **130** = Typical resale Home++  
 The lower number, the better! Refer to the RESNET® HERS index brochure or go to [www.RESNET.us](http://www.RESNET.us) and [www.HERSindex.com](http://www.HERSindex.com)

**What's a HERS® Index?** HERS stands for Home Energy Rating System, a system created by RESNET® to measure home energy efficiency. A Projected HERS index or rating is a computer simulation performed prior to construction by a third-party HERS rater using RESNET-accredited rating software, rated feature and specification data derived from home plans, features and specifications, and other data selected or assumed by the rater. The projected HERS index is approximate and is subject to change without notice. Actual results will vary.