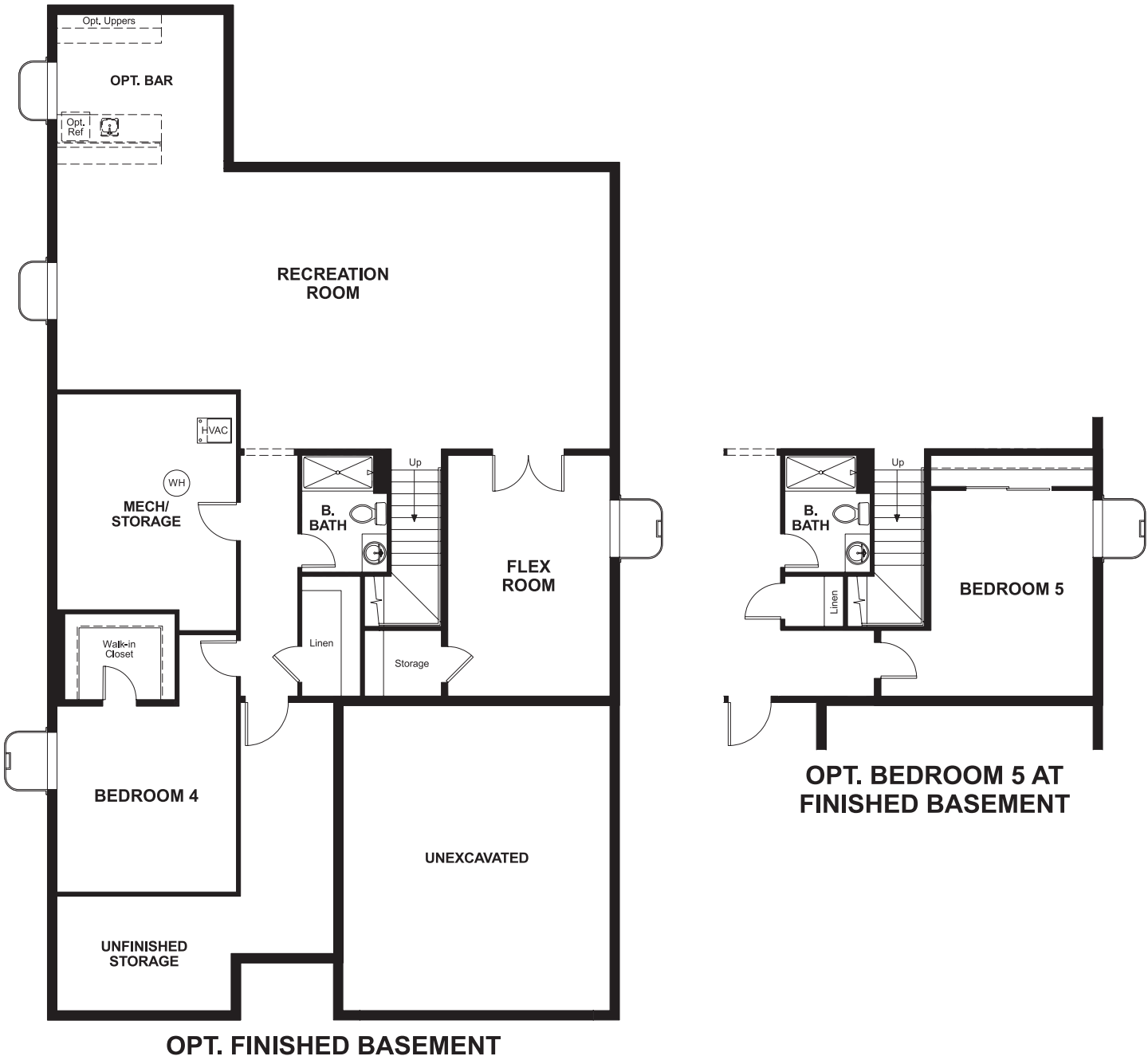



BASEMENT



COMMUNITY LOCATION:

Providence Village at Sterling Ranch | 9873 Eagle River Street | Littleton, CO 80125 | 303.850.5750

 Floor plans and renderings are conceptual drawings and may vary from actual plans and homes as built. Options and features may not be available on all homes and are subject to change without notice. Actual homes may vary from photos and/or drawings which show upgraded landscaping and may not represent the lowest-priced homes in the community. Features may include optional upgrades and may not be available on all homes. Square footage numbers are approximate and are subject to change without notice. Prices, specifications and availability subject to change without notice. ©2018 Richmond American Homes, Richmond American Homes of Colorado, Inc. 11/12/2018



ELEVATION C

ABOUT THE ALAMOSA

The Alamosa plan is ideal for entertaining, with a formal dining room, a spacious great room and a gourmet kitchen featuring a walk-in pantry, center island and adjacent sunroom with vaulted ceiling. The main floor also boasts a private study and a convenient master suite with an expansive walk-in closet and deluxe bath with separate shower and soaking tub. Upstairs, discover a full bath and two generous bedrooms with walk-in closets. Options include a finished basement.

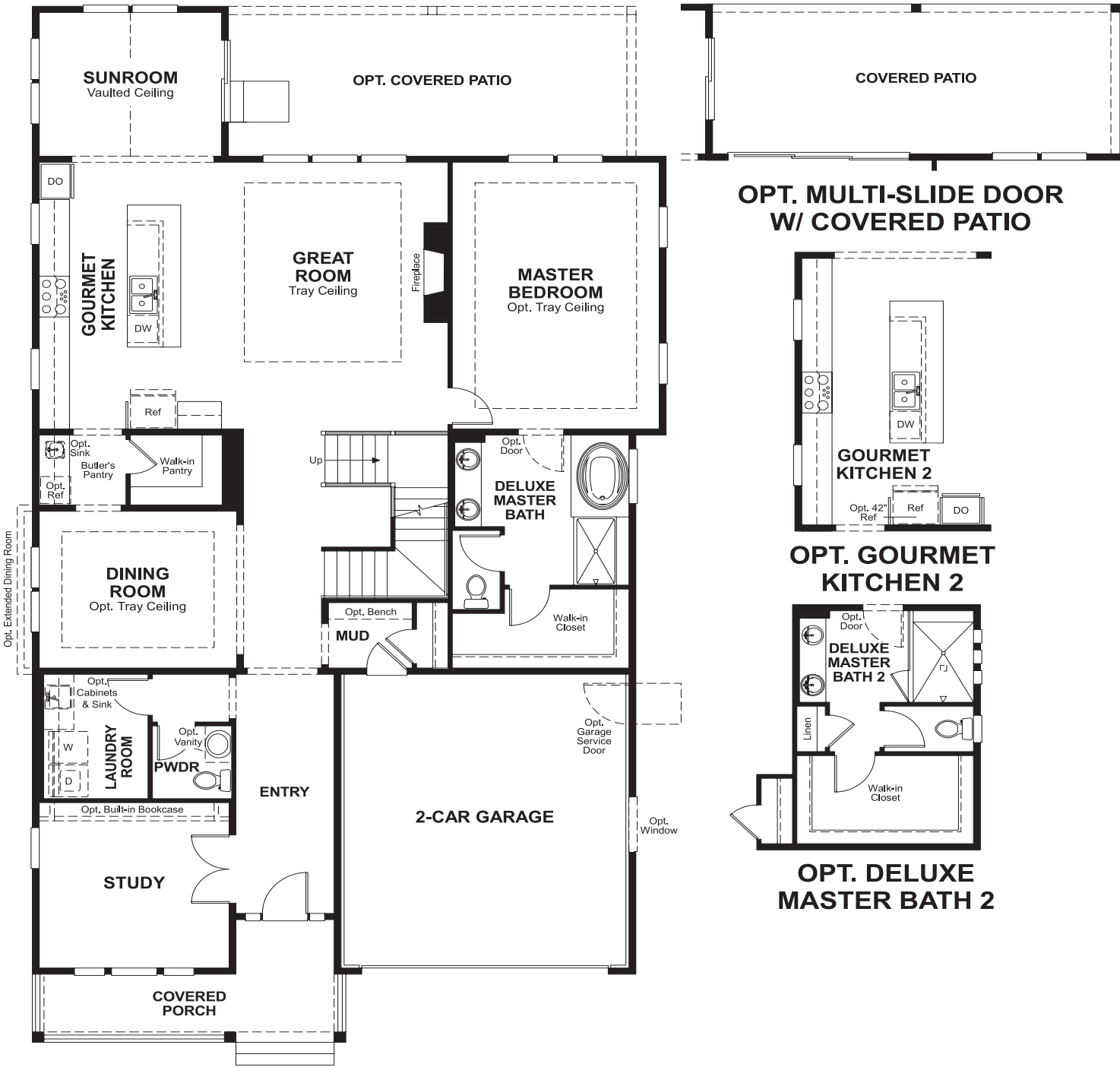


ELEVATION A

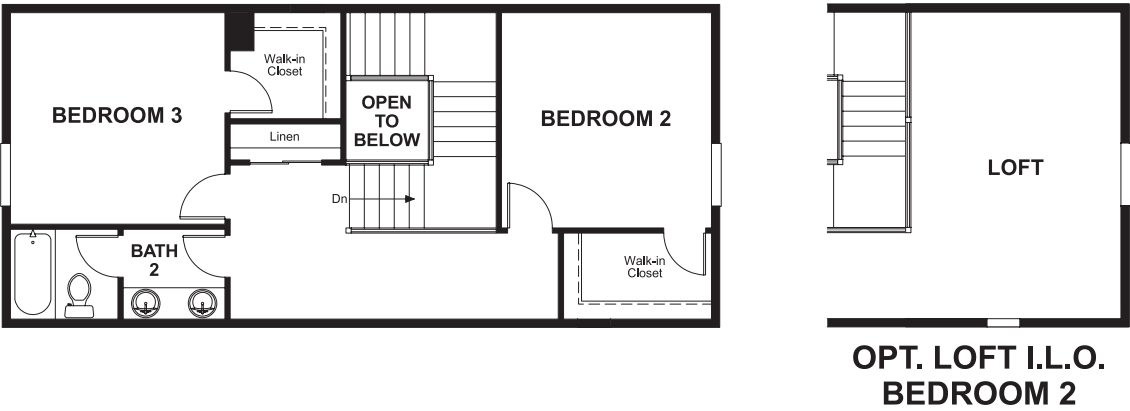


ELEVATION B

MAIN FLOOR



SECOND FLOOR



Floor plans and renderings are conceptual drawings and may vary from actual plans and homes as built. Options and features may not be available on all homes and are subject to change without notice. Actual homes may vary from photos and/or drawings which show upgraded landscaping and may not represent the lowest-priced homes in the community. Features may include optional upgrades and may not be available on all homes. Square footage numbers are approximate and are subject to change without notice. Prices, specifications and availability subject to change without notice. ©2018 Richmond American Homes, Richmond American Homes of Colorado, Inc. 11/12/2018

Floor plans and renderings are conceptual drawings and may vary from actual plans and homes as built. Options and features may not be available on all homes and are subject to change without notice. Actual homes may vary from photos and/or drawings which show upgraded landscaping and may not represent the lowest-priced homes in the community. Features may include optional upgrades and may not be available on all homes. Square footage numbers are approximate and are subject to change without notice. Prices, specifications and availability subject to change without notice. ©2018 Richmond American Homes, Richmond American Homes of Colorado, Inc. 11/12/2018