

THE SIENNA

Approx. 2,250 sq. ft. | 2 stories | 3-4 bedrooms | 2-car garage | Plan #N617



ELEVATION C

ABOUT THE SIENNA

The Sienna plan offers a grand two-story entry with a study and powder bath located directly off the entrance. The spacious great room offers buyers the option of adding a fireplace and center-meet sliding doors for access to the rear yard. The kitchen features an center island, pantry and stainless appliances with an adjacent nook. Upstairs, is a loft for family entertaining and three welcoming bedrooms including a master bathroom with two vanities, a soaking tub, shower and walk-in closet. Options to personalize this plan include a 4th bedroom and full bath on the first floor.

COMMUNITY LOCATION:


Larkspur at The Villages | 1505 Gulf Drive | Fairfield, CA 94533 | **707.229.7000**

*This information is presented for education purposes only. The HERS index for a confirmed rating will be determined by a third-party HERS rater based on data gathered from on-site observations and, if required, testing of rated features for a home as featured, optioned, located, oriented and/or built.

+Standard new home is based on the RESNET® Reference Home definition with a HERS® index of 100 (based on the 2006 International Energy Conservation Code).

++Typical resale home is based on the U.S. Department of Energy definition with a HERS® index of 130.

^RESNET® has developed the HERS® index to indicate the comparative efficiencies of homes. It is no guarantee that energy efficiencies will be achieved.



Floor plans and renderings are conceptual drawings and may vary from actual plans and homes as built. Options and features may not be available on all homes and are subject to change without notice. Actual homes may vary from photos and/or drawings which show upgraded landscaping and may not represent the lowest-priced homes in the community. Features may include optional upgrades and may not be available on all homes. Square footage numbers are approximate and are subject to change without notice. ©2019 Richmond American Homes, Richmond American Homes of Maryland, Inc., California Bureau of Real Estate – Real Estate Broker, Corporation License Number 01842595. 10/14/2019



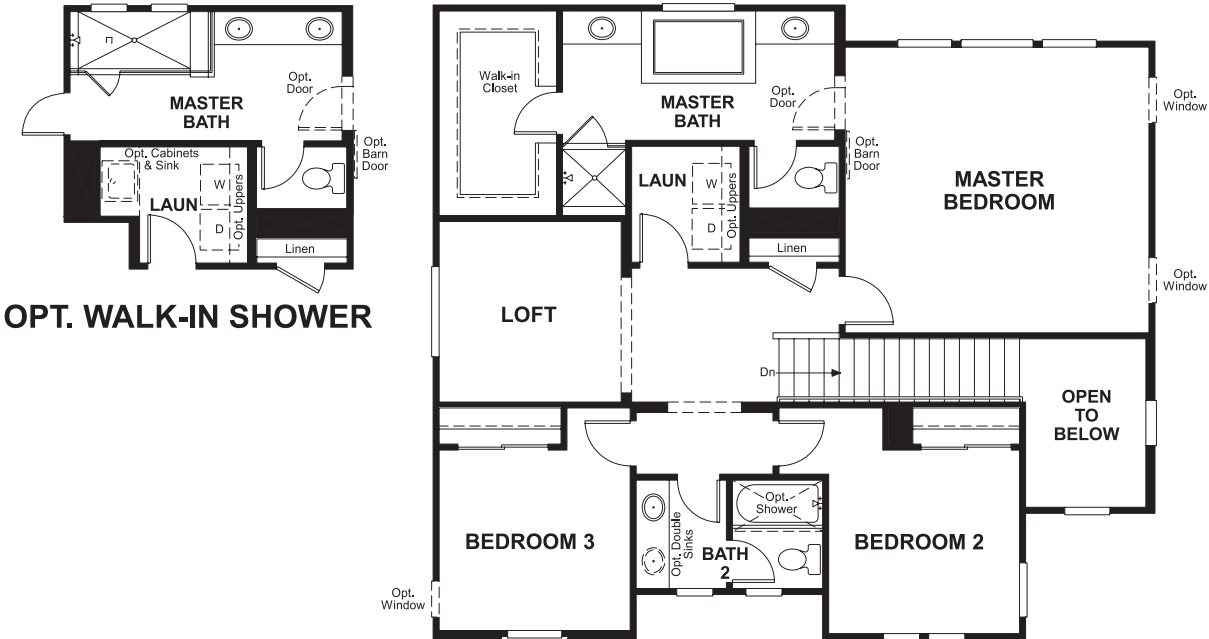
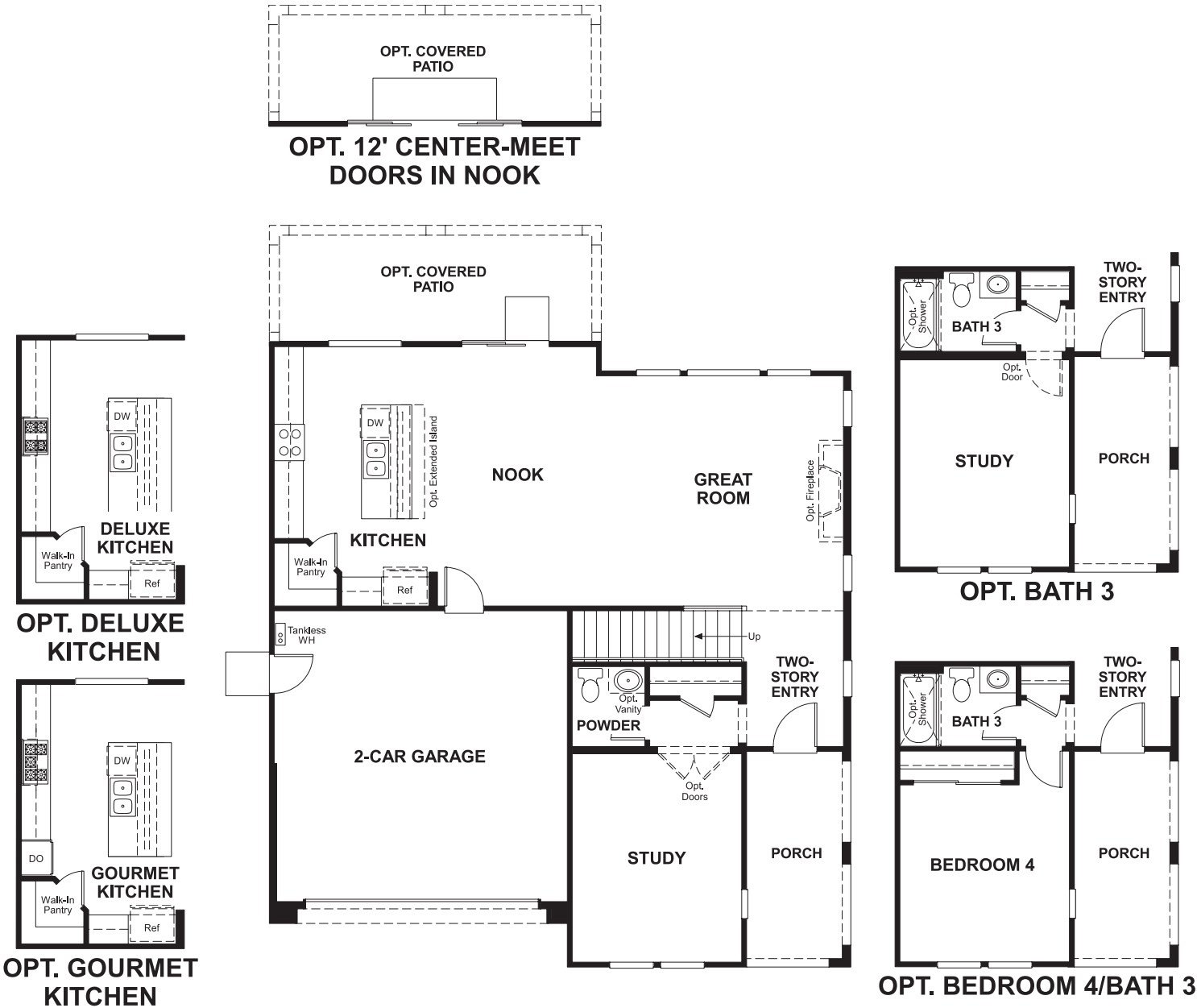
ELEVATION A



ELEVATION B

MAIN FLOOR

SECOND FLOOR



THIS PLAN'S PROJECTED
HERS® INDEX = 40*
Projected Rating Based on Plans – Field Confirmation required

How does this floor plan rate?
Take a look: **100** = Standard new home+ **130** = Typical resale Home++
The lower number, the better! Refer to the RESNET® HERS index brochure or go to www.RESNET.us and www.HERSindex.com

What's a HERS® Index? HERS stands for Home Energy Rating System, a system created by RESNET® to measure home energy efficiency.^
A Projected HERS index or rating is a computer simulation performed prior to construction by a third-party HERS rater using RESNET-accredited rating software, rated feature and specification data derived from home plans, features and specifications, and other data selected or assumed by the rater. The projected HERS index is approximate and is subject to change without notice. Actual results will vary.