



ELEVATION D

## ABOUT THE SANFORD

Step into this plan with the large covered porch, extended entry with a study and powder bath. The open kitchen features a walk-in pantry, center island with sink, adjacent to a separate dining room and large great room with optional fireplace and sliding door systems that lead to the back yard. The garage offers a storage area and an optional drop zone in the owner's entry. Upstairs, this plan boasts a loft for family entertaining, three secondary bedrooms, some offering walk-in closets, a full bathroom and large laundry room and linen closet. The spacious master suite with a master bathroom that has a large walk-in closet, dual sink vanity, inviting shower and large linen storage. Personalize this plan with a 6th bedroom, center-meet patio doors, covered patio and upgraded kitchen.

### COMMUNITY LOCATION:

Oliveto at Mountain House | 1479 South Oliveira Drive | Mountain House, CA 95391 | **209.650.7026**

### HOME GALLERY LOCATION:

Northern California Home Gallery™ | One Harbor Center, Suite 150 | Suisun City, CA 94585 | **707.418.2800**

\*This information is presented for education purposes only. The HERS index for a confirmed rating will be determined by a third-party HERS rater based on data gathered from on-site observations and, if required, testing of rated features for a home as featured, optioned, located, oriented and/or built.

+Standard new home is based on the RESNET® Reference Home definition with a HERS® index of 100 (based on the 2006 International Energy Conservation Code).

++Typical resale home is based on the U.S. Department of Energy definition with a HERS® index of 130.

^RESNET® has developed the HERS® index to indicate the comparative efficiencies of homes. It is no guarantee that energy efficiencies will be achieved.



Floor plans and renderings are conceptual drawings and may vary from actual plans and homes as built. Options and features may not be available on all homes and are subject to change without notice. Actual homes may vary from photos and/or drawings which show upgraded landscaping and may not represent the lowest-priced homes in the community. Features may include optional upgrades and may not be available on all homes. Square footage numbers are approximate and are subject to change without notice. ©2019 Richmond American Homes, Richmond American Homes of Maryland, Inc., California Bureau of Real Estate – Real Estate Broker, Corporation License Number 01842595. 10/8/2019



ELEVATION A

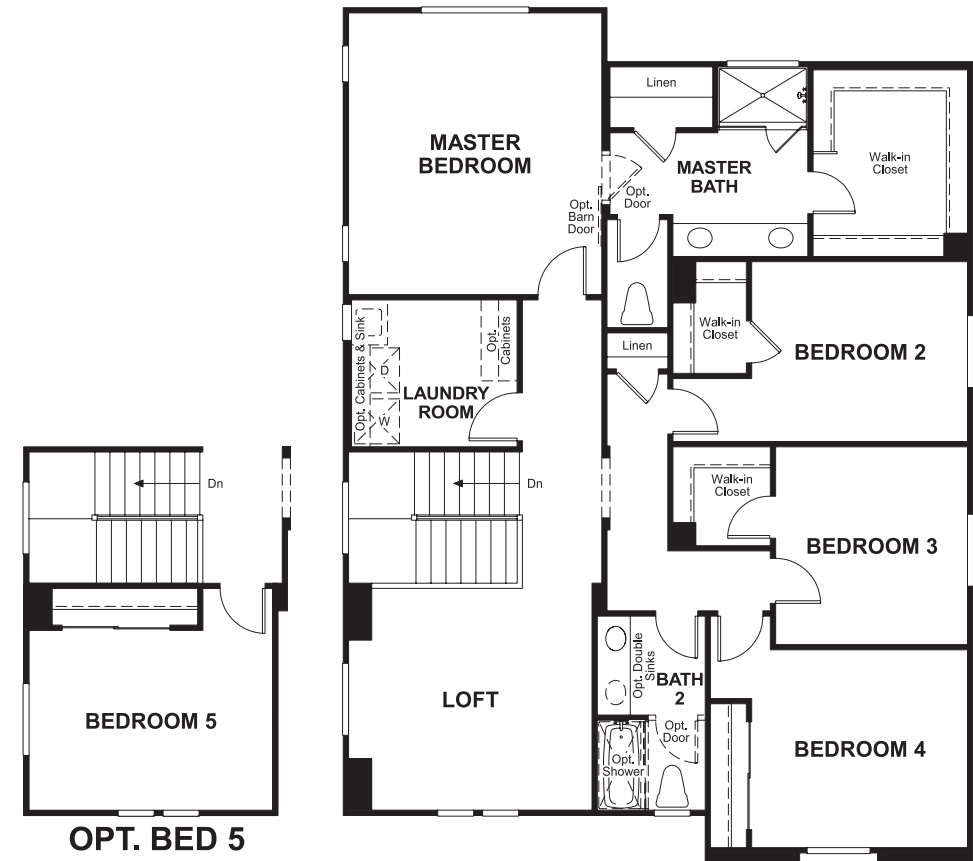
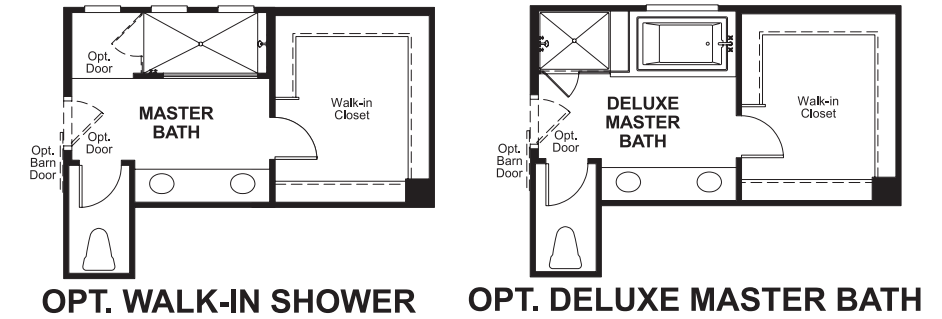
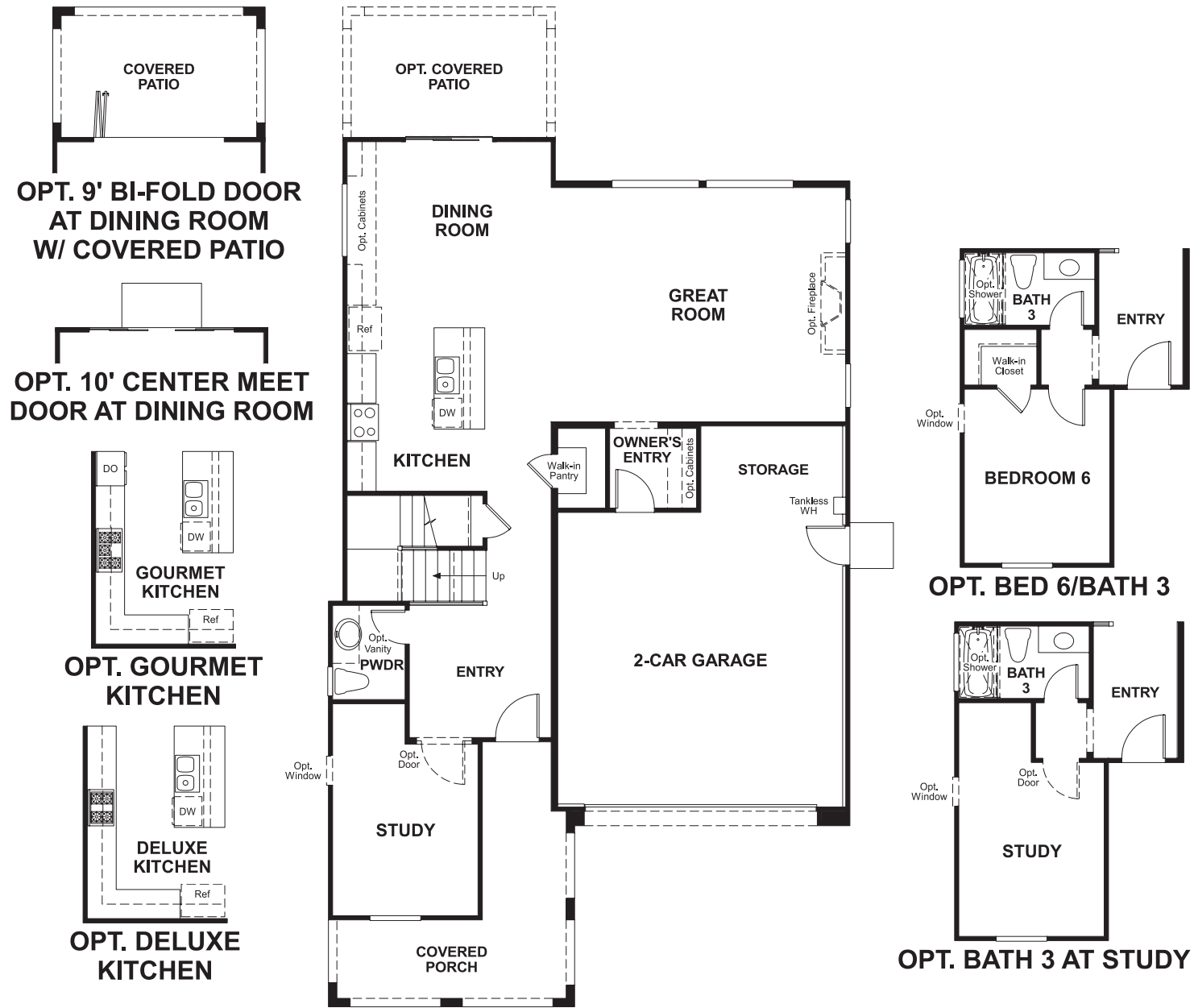


ELEVATION C



MAIN FLOOR

SECOND FLOOR



THIS PLAN'S PROJECTED  
**HERS® INDEX = 35\***  
 Projected Rating Based on Plans – Field Confirmation required

**How does this floor plan rate?**  
 Take a look: **100** = Standard new home+ **130** = Typical resale Home++  
 The lower number, the better! Refer to the RESNET® HERS index brochure or go to [www.RESNET.us](http://www.RESNET.us) and [www.HERSindex.com](http://www.HERSindex.com)

**What's a HERS® Index?** HERS stands for Home Energy Rating System, a system created by RESNET® to measure home energy efficiency. ^  
 A Projected HERS index or rating is a computer simulation performed prior to construction by a third-party HERS rater using RESNET-accredited rating software, rated feature and specification data derived from home plans, features and specifications, and other data selected or assumed by the rater. The projected HERS index is approximate and is subject to change without notice. Actual results will vary.