

THE BRADFORD

Approx. 2,920 sq. ft. | 2 stories | 4-5 bedrooms | 2- to 3-car garage | Plan #G603

BASEMENT



ELEVATION C

ABOUT THE BRADFORD

The beautiful Bradford plan boasts an open main-floor layout, with a generous dining room, an inviting great room and a well-appointed kitchen featuring a walk-in pantry, center island and adjacent covered patio. You'll also appreciate a quiet study, which can be converted to an extra bedroom. Upstairs, enjoy a convenient laundry, a versatile loft and a lavish master suite with dual walk-in closets and an optional deluxe bath. Additional options include a gourmet or chef's kitchen, great room fireplace and 3-car garage.



ELEVATION A

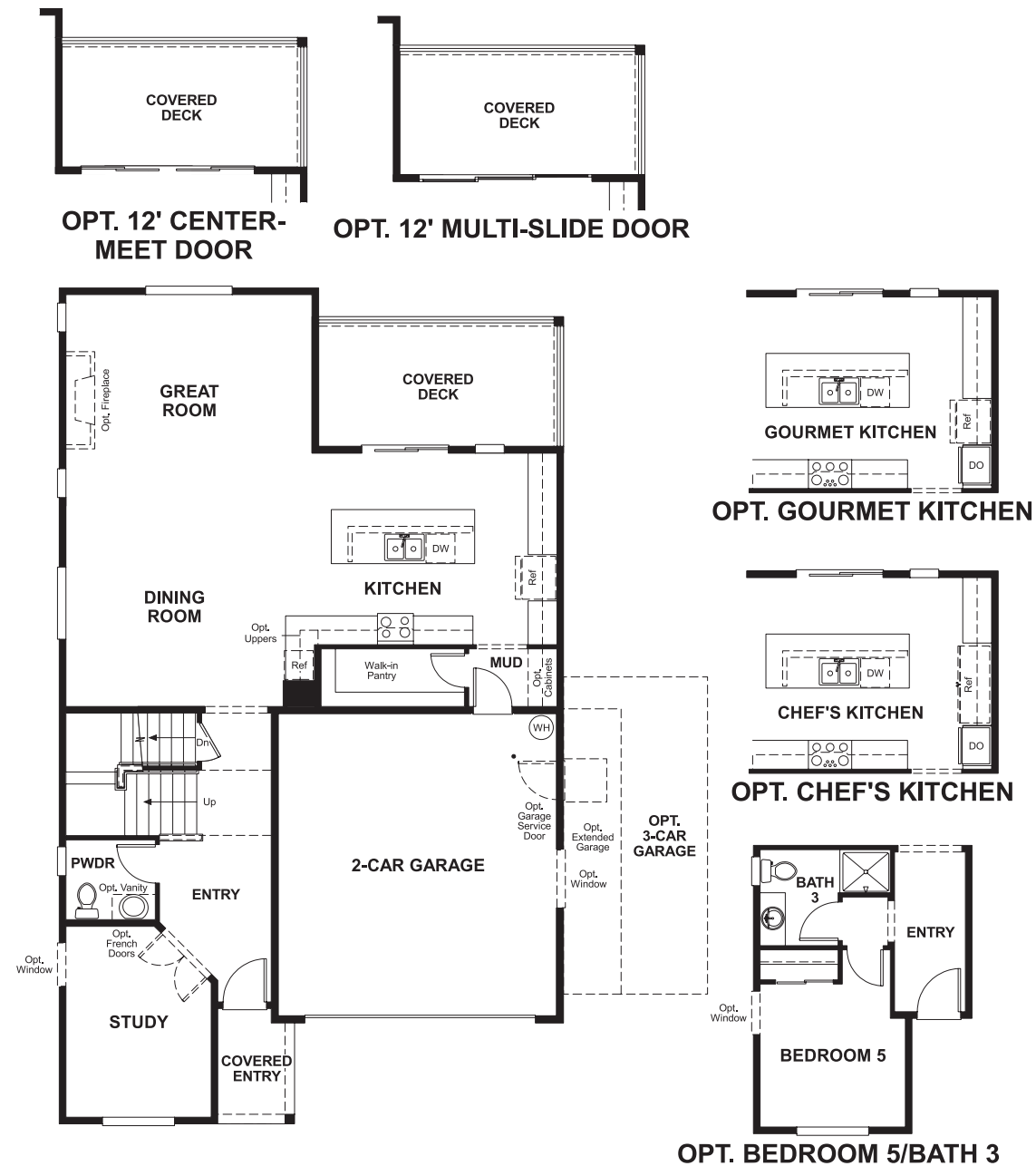


ELEVATION B

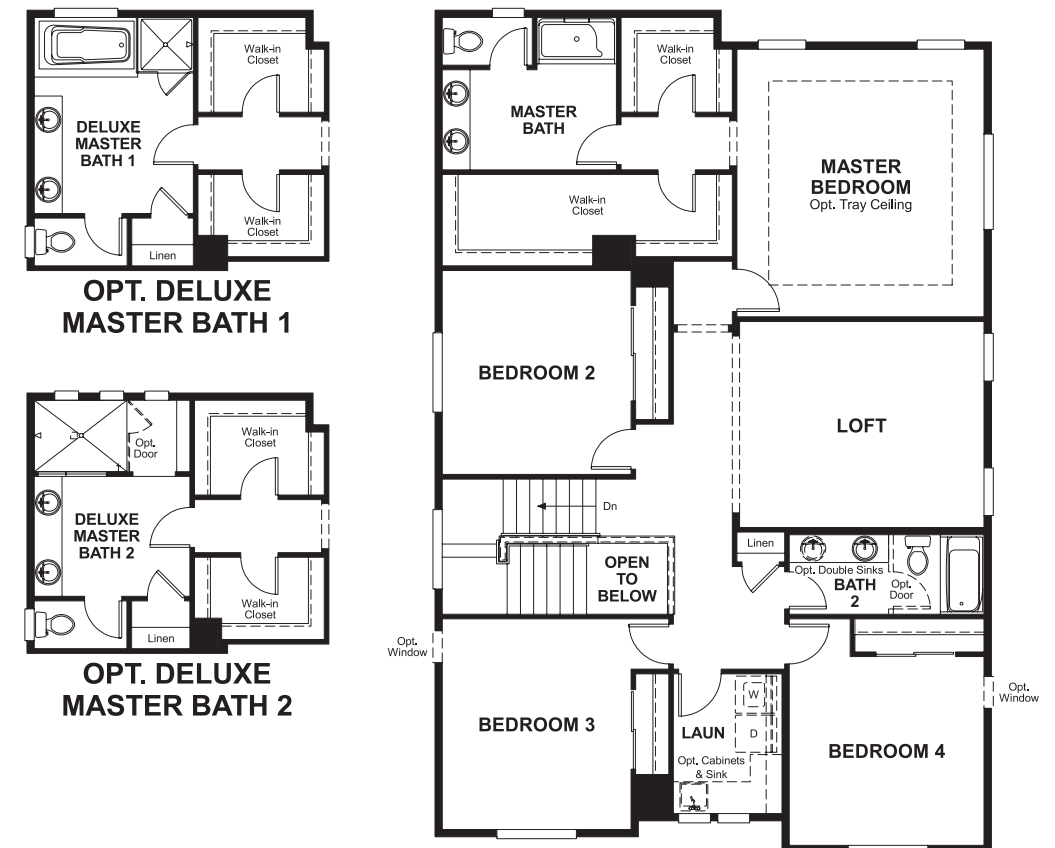


Floor plans and renderings are conceptual drawings and may vary from actual plans and homes as built. Options and features may not be available on all homes and are subject to change without notice. Actual homes may vary from photos and/or drawings which show upgraded landscaping and may not represent the lowest-priced homes in the community. Features may include optional upgrades and may not be available on all homes. Square footage numbers are approximate and are subject to change without notice. Prices, specifications and availability subject to change without notice. ©2018 Richmond American Homes, Richmond American Homes of Oregon, Inc., CCB #218193. 5/25/2018

MAIN FLOOR



SECOND FLOOR



Floor plans and renderings are conceptual drawings and may vary from actual plans and homes as built. Options and features may not be available on all homes and are subject to change without notice. Actual homes may vary from photos and/or drawings which show upgraded landscaping and may not represent the lowest-priced homes in the community. Features may include optional upgrades and may not be available on all homes. Square footage numbers are approximate and are subject to change without notice. Prices, specifications and availability subject to change without notice. ©2018 Richmond American Homes, Richmond American Homes of Oregon, Inc., CCB #218193. 5/25/2018

Floor plans and renderings are conceptual drawings and may vary from actual plans and homes as built. Options and features may not be available on all homes and are subject to change without notice. Actual homes may vary from photos and/or drawings which show upgraded landscaping and may not represent the lowest-priced homes in the community. Features may include optional upgrades and may not be available on all homes. Square footage numbers are approximate and are subject to change without notice. Prices, specifications and availability subject to change without notice. ©2018 Richmond American Homes, Richmond American Homes of Oregon, Inc., CCB #218193. 5/25/2018