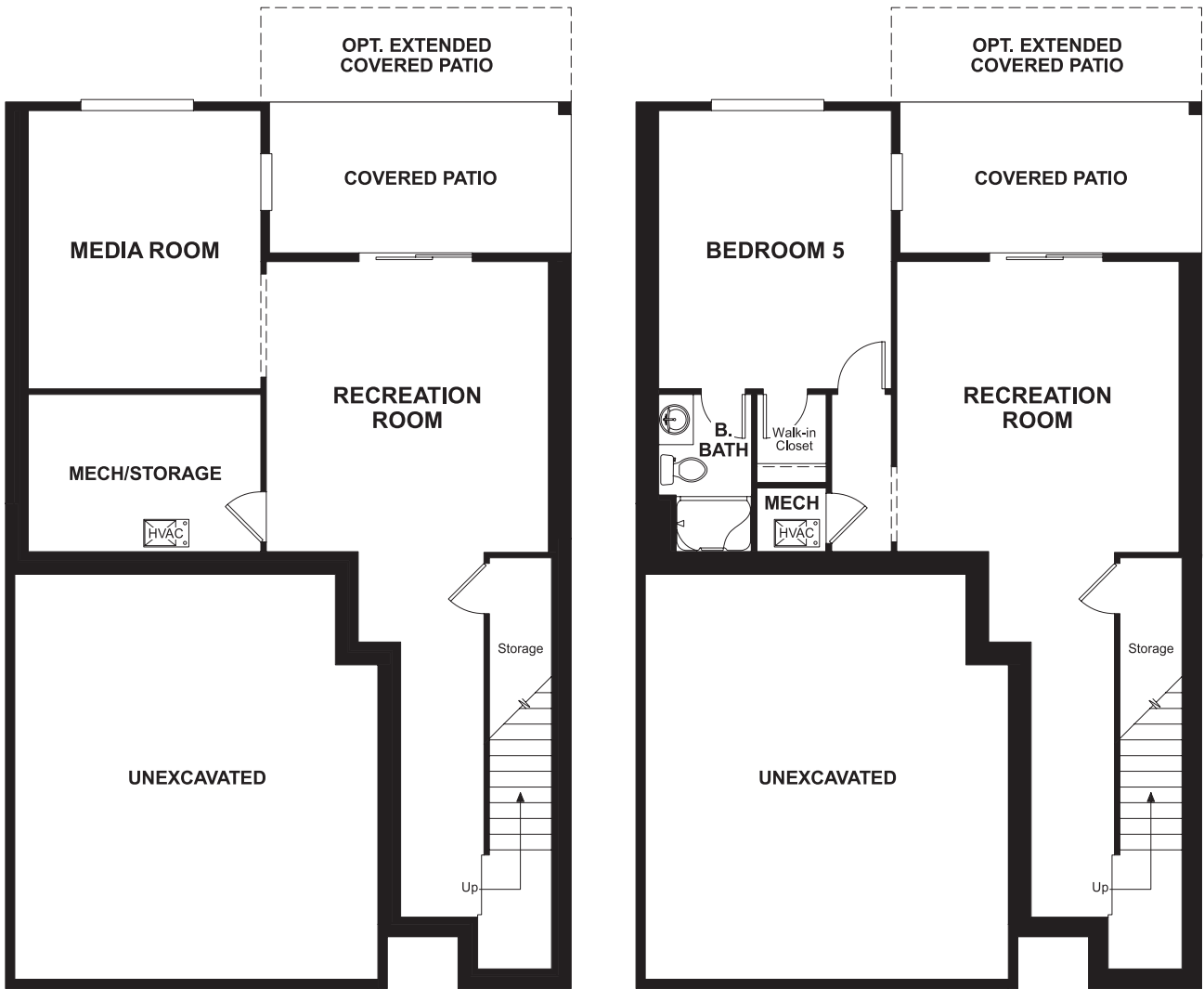


THE LIESEL

Approx. 2,050 sq. ft. | 2 stories | 3-4 bedrooms | 2-car garage | Plan #G712

BASEMENT



ELEVATION C

ABOUT THE LIESEL

The lovely Liesel plan greets guests with a dramatic two-story entry. The main floor features a spacious great room with an optional fireplace and an inviting kitchen with a center island and adjacent dining room. There's even a covered patio! Upstairs, enjoy a convenient laundry, a relaxing loft and three large bedrooms, including a luxurious master suite with a walk-in closet and attached bath. An optional gourmet or chef's kitchen, deluxe master bath and finished walk-out basement are available.



ELEVATION A

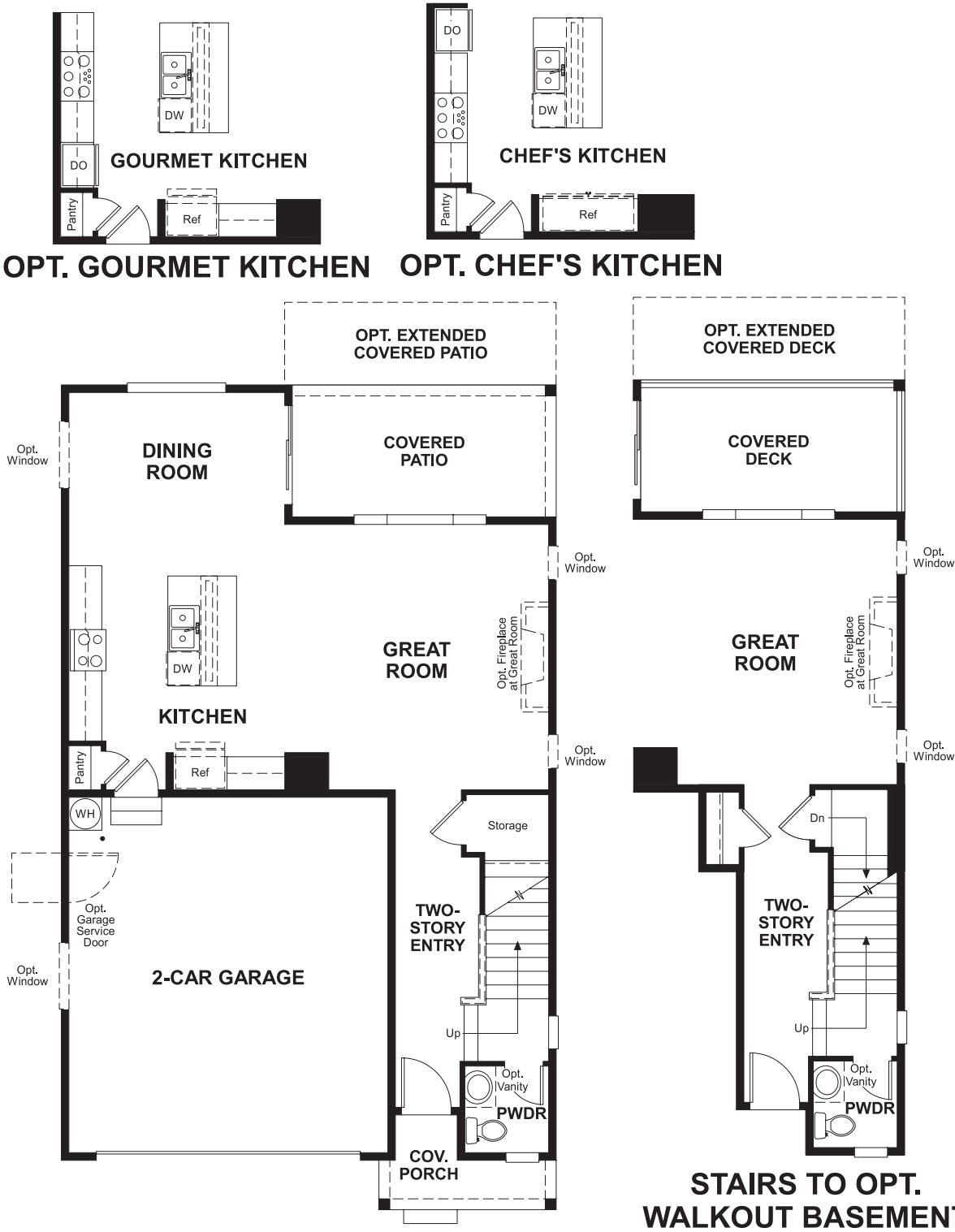


ELEVATION B



Floor plans and renderings are conceptual drawings and may vary from actual plans and homes as built. Options and features may not be available on all homes and are subject to change without notice. Actual homes may vary from photos and/or drawings which show upgraded landscaping and may not represent the lowest-priced homes in the community. Features may include optional upgrades and may not be available on all homes. Square footage numbers are approximate and are subject to change without notice. Prices, specifications and availability subject to change without notice. ©2019 Richmond American Homes, Richmond American Homes of Oregon, Inc., CCB #218193. 5/9/2019

MAIN FLOOR



SECOND FLOOR



Floor plans and renderings are conceptual drawings and may vary from actual plans and homes as built. Options and features may not be available on all homes and are subject to change without notice. Actual homes may vary from photos and/or drawings which show upgraded landscaping and may not represent the lowest-priced homes in the community. Features may include optional upgrades and may not be available on all homes. Square footage numbers are approximate and are subject to change without notice. Prices, specifications and availability subject to change without notice. ©2019 Richmond American Homes, Richmond American Homes of Oregon, Inc., CCB #218193. 5/9/2019

Floor plans and renderings are conceptual drawings and may vary from actual plans and homes as built. Options and features may not be available on all homes and are subject to change without notice. Actual homes may vary from photos and/or drawings which show upgraded landscaping and may not represent the lowest-priced homes in the community. Features may include optional upgrades and may not be available on all homes. Square footage numbers are approximate and are subject to change without notice. Prices, specifications and availability subject to change without notice. ©2019 Richmond American Homes, Richmond American Homes of Oregon, Inc., CCB #218193. 5/9/2019