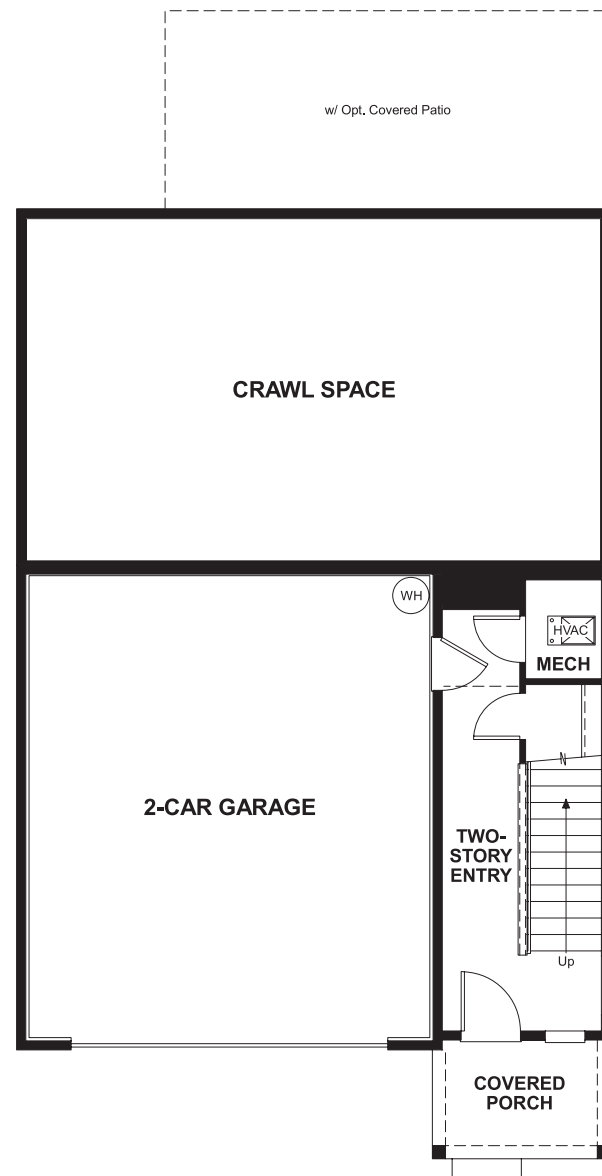


THE LEO

Approx. 2,610 sq. ft. | 3 stories | 3-4 bedrooms | 2-car garage | Plan #G593

LOWER FLOOR



ELEVATION C

ABOUT THE LEO

The Leo plan was designed for entertaining. It has a spacious great room with optional fireplace, an open dining room and an inviting kitchen with a center island offering ample seating. A large loft and three inviting bedrooms, including an elegant master suite with private bath, occupy the home's upper floor. Personalization options include a gourmet or chef's kitchen, covered patio, master sitting room and deluxe master bath.



ELEVATION A



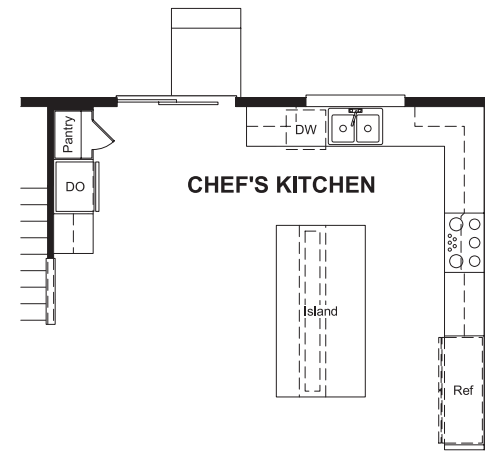
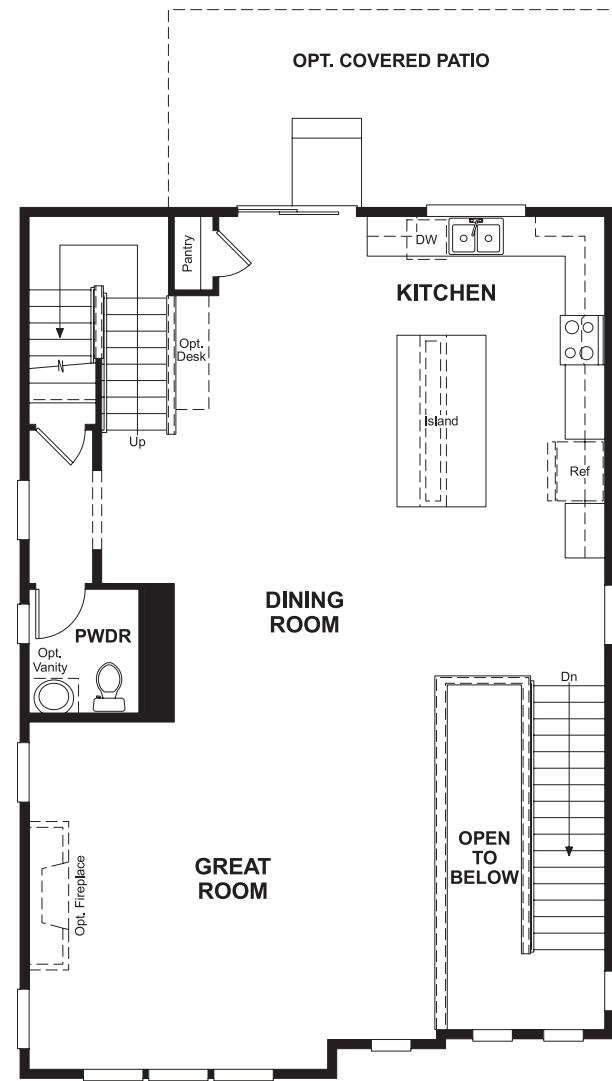
ELEVATION B



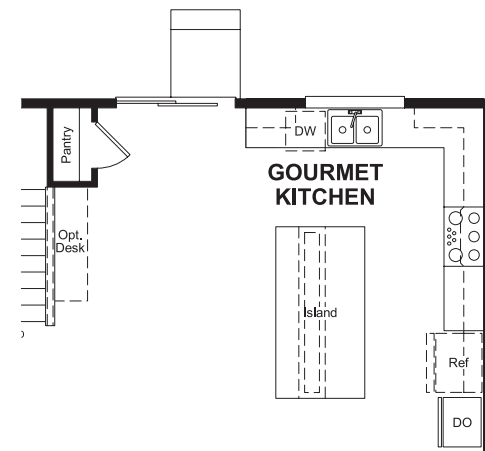
Floor plans and renderings are conceptual drawings and may vary from actual plans and homes as built. Options and features may not be available on all homes and are subject to change without notice. Actual homes may vary from photos and/or drawings which show upgraded landscaping and may not represent the lowest-priced homes in the community. Features may include optional upgrades and may not be available on all homes. Square footage numbers are approximate and are subject to change without notice. Prices, specifications and availability subject to change without notice. ©2018 Richmond American Homes, Richmond American Homes of Oregon, Inc., CCB #218193. 11/20/2018

MAIN FLOOR

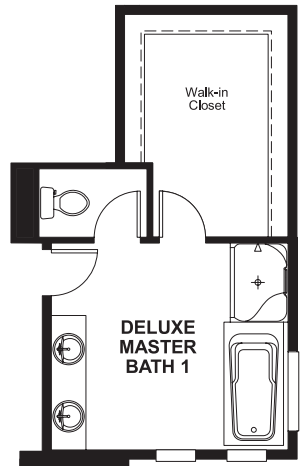
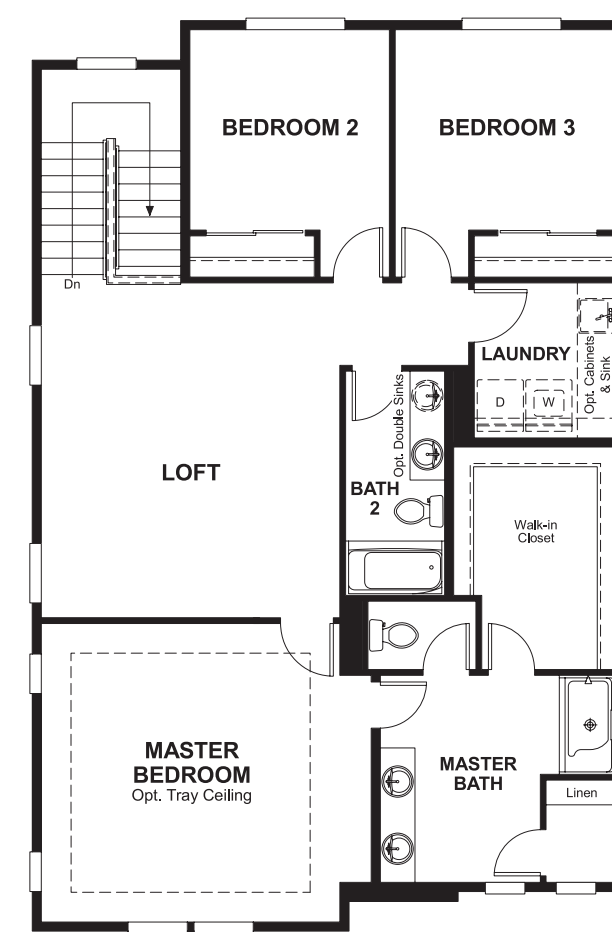
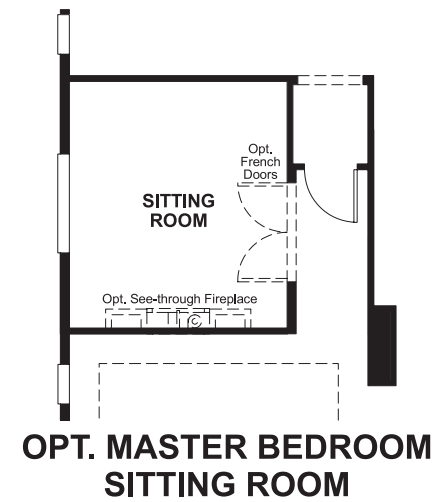
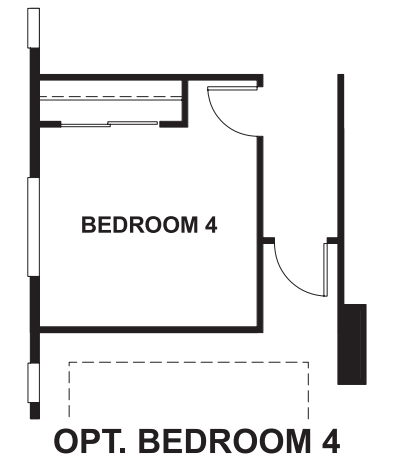
SECOND FLOOR



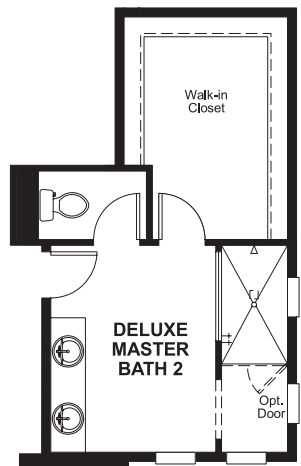
OPT. CHEF'S KITCHEN



OPT. GOURMET KITCHEN



OPT. DELUXE MASTER BATH 1



OPT. DELUXE MASTER BATH 2

Floor plans and renderings are conceptual drawings and may vary from actual plans and homes as built. Options and features may not be available on all homes and are subject to change without notice. Actual homes may vary from photos and/or drawings which show upgraded landscaping and may not represent the lowest-priced homes in the community. Features may include optional upgrades and may not be available on all homes. Square footage numbers are approximate and are subject to change without notice. Prices, specifications and availability subject to change without notice. ©2018 Richmond American Homes, Richmond American Homes of Oregon, Inc., CCB #218193. 11/20/2018

Floor plans and renderings are conceptual drawings and may vary from actual plans and homes as built. Options and features may not be available on all homes and are subject to change without notice. Actual homes may vary from photos and/or drawings which show upgraded landscaping and may not represent the lowest-priced homes in the community. Features may include optional upgrades and may not be available on all homes. Square footage numbers are approximate and are subject to change without notice. Prices, specifications and availability subject to change without notice. ©2018 Richmond American Homes, Richmond American Homes of Oregon, Inc., CCB #218193. 11/20/2018