



ELEVATION F - SHOWN W/ OPT STONE

ABOUT THE MOONSTONE

Spacious and accommodating, the two-story Moonstone features an open-concept main floor and four charming bedrooms upstairs. Just off the entryway, you’ll find a secluded study with a nearby powder room. Toward the back of the home, a great room flows into an inviting kitchen with a center island and adjacent dining room. Upstairs, a loft offers a versatile common area, and a sprawling owner’s suite includes an attached bath and walk-in closet. If desired, opt for additional bedrooms in lieu of the study or loft.

HOME GALLERY LOCATION:


Orlando Home Gallery™ | 2822 Commerce Park Drive, Suite 100 | Orlando, FL 32819 | **407.450.7320**

*This information is presented for educational purposes only. The HERS® index for a confirmed rating will be determined by a third-party HERS rater based on data gathered from on-site observations and, if required, testing of rated features for a home as featured, optioned, located, oriented and/or built.

**Standard new home is based on the RESNET® Reference Home definition with a HERS index of 100 (based on the 2006 International Energy Conservation Code).

***Typical resale home is based on the U.S. Department of Energy definition with a HERS index of 130.

^RESNET has developed the HERS index to indicate the comparative efficiencies of homes. It is no guarantee that energy efficiencies will be achieved.



Floor plans and renderings are conceptual drawings and may vary from actual plans and homes as built. Options and features may not be available on all homes and are subject to change without notice. Actual homes may vary from photos and/or drawings which show upgraded landscaping and may not represent the lowest-priced homes in the community. Features may include optional upgrades and may not be available on all homes. Prices, specifications and availability are subject to change without notice. Square footage is approximate and subject to change without notice. ©2022 Richmond American Homes, Richmond American Homes of Florida, LP, CGC1519936 03/04/2022

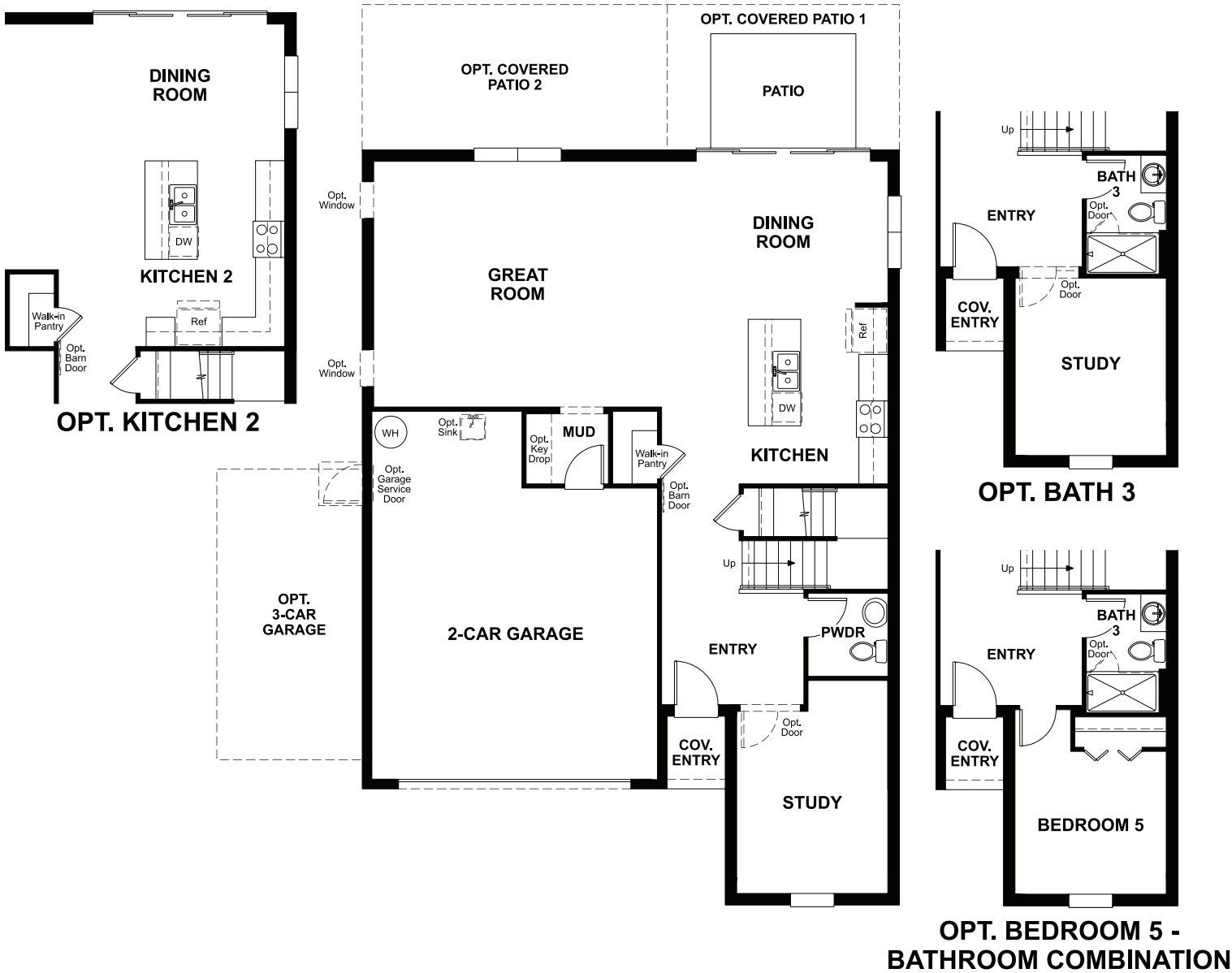


ELEVATION D

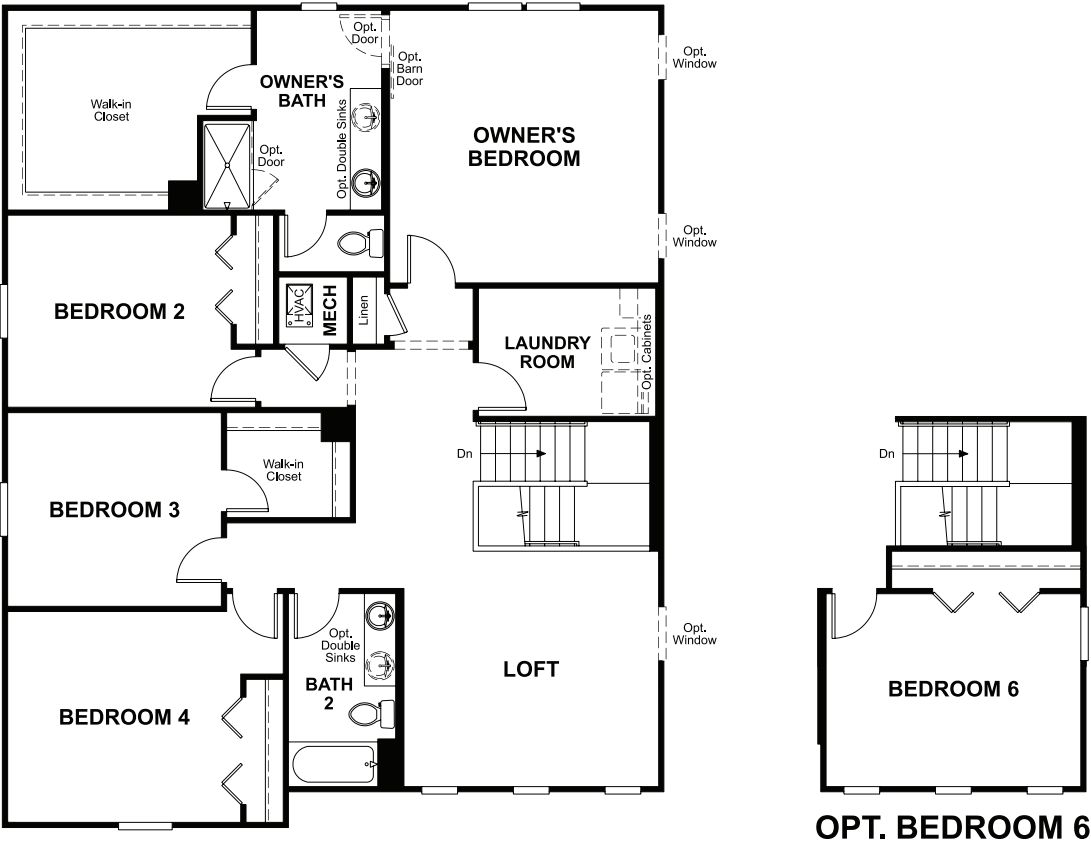


ELEVATION E - SHOWN W/ OPTIONAL STONE

MAIN FLOOR



SECOND FLOOR



THIS PLAN'S PROJECTED
HERS® INDEX = 65*
Projected Rating Based on Plans – Field Confirmation required

How does this floor plan rate?
Take a look: **100** = Standard new home+ **130** = Typical resale Home++
The lower number, the better! Refer to the RESNET® HERS index brochure or go to www.RESNET.us and www.HERSindex.com

What's a HERS® Index? HERS stands for Home Energy Rating System, a system created by RESNET® to measure home energy efficiency.^
A Projected HERS index or rating is a computer simulation performed prior to construction by a third-party HERS rater using RESNET-accredited rating software, rated feature and specification data derived from home plans, features and specifications, and other data selected or assumed by the rater. The projected HERS index is approximate and is subject to change without notice. Actual results will vary.