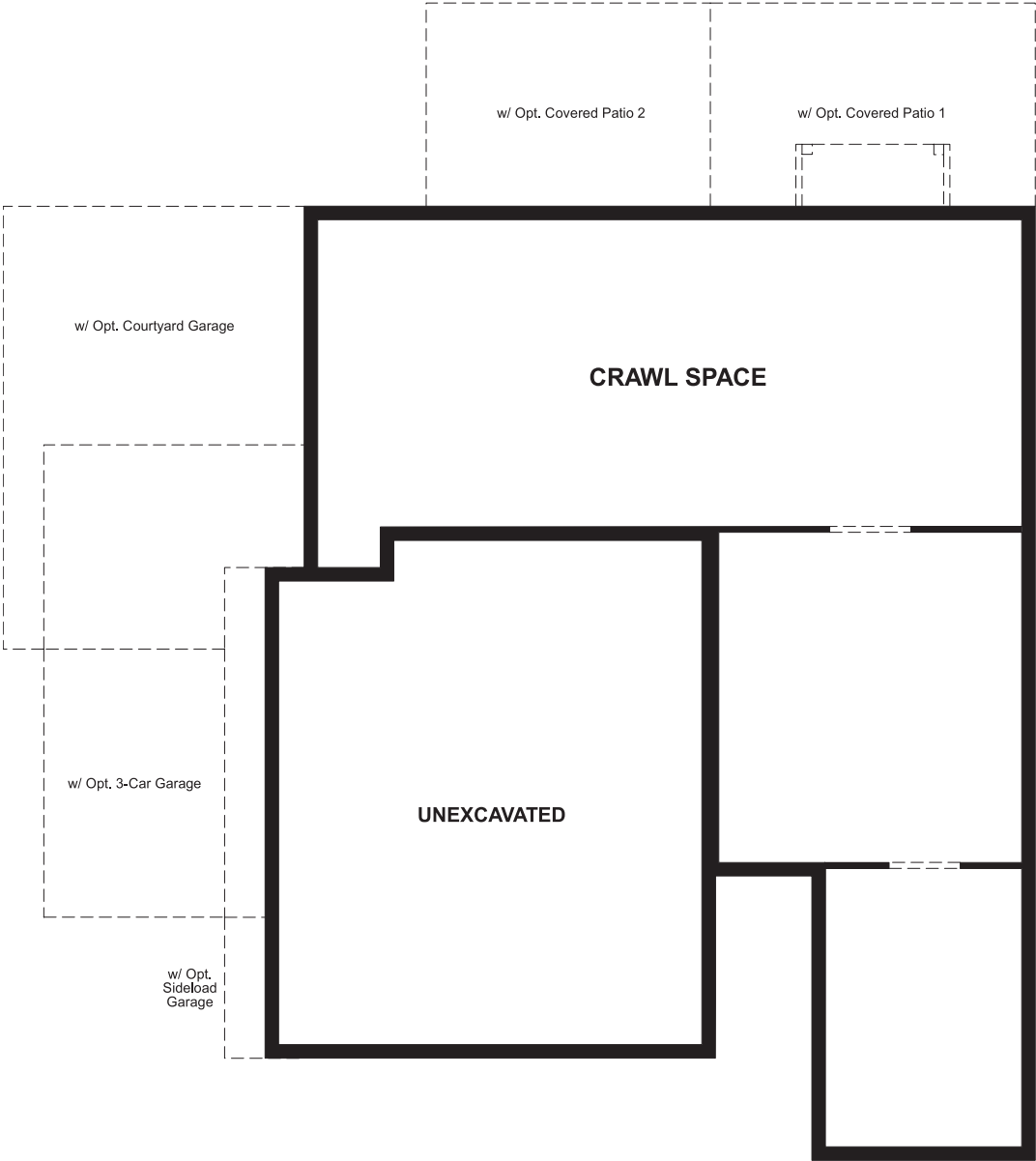


THE CITRINE

Approx. 2,030 sq. ft. | 2 stories | 3-4 bedrooms | 2- to 3-car garage | Plan #UT04

CRAWL SPACE



ELEVATION H

ABOUT THE CITRINE

The Citrine floor plan offers two floors of versatile living space. The entry is flanked by a study and powder room that can be optioned as a bedroom and bathroom, and the foyer leads back into an open layout with a great room, dining area and kitchen with a center island and a pantry. Upstairs, a master suite offers a walk-in closet and attached bathroom; two additional bedrooms, a bathroom and a laundry that can be optioned with cabinets or a linen closet make up the second floor. Personalize by adding a covered patio or 3-car garage!



ELEVATION B



ELEVATION E



ELEVATION F

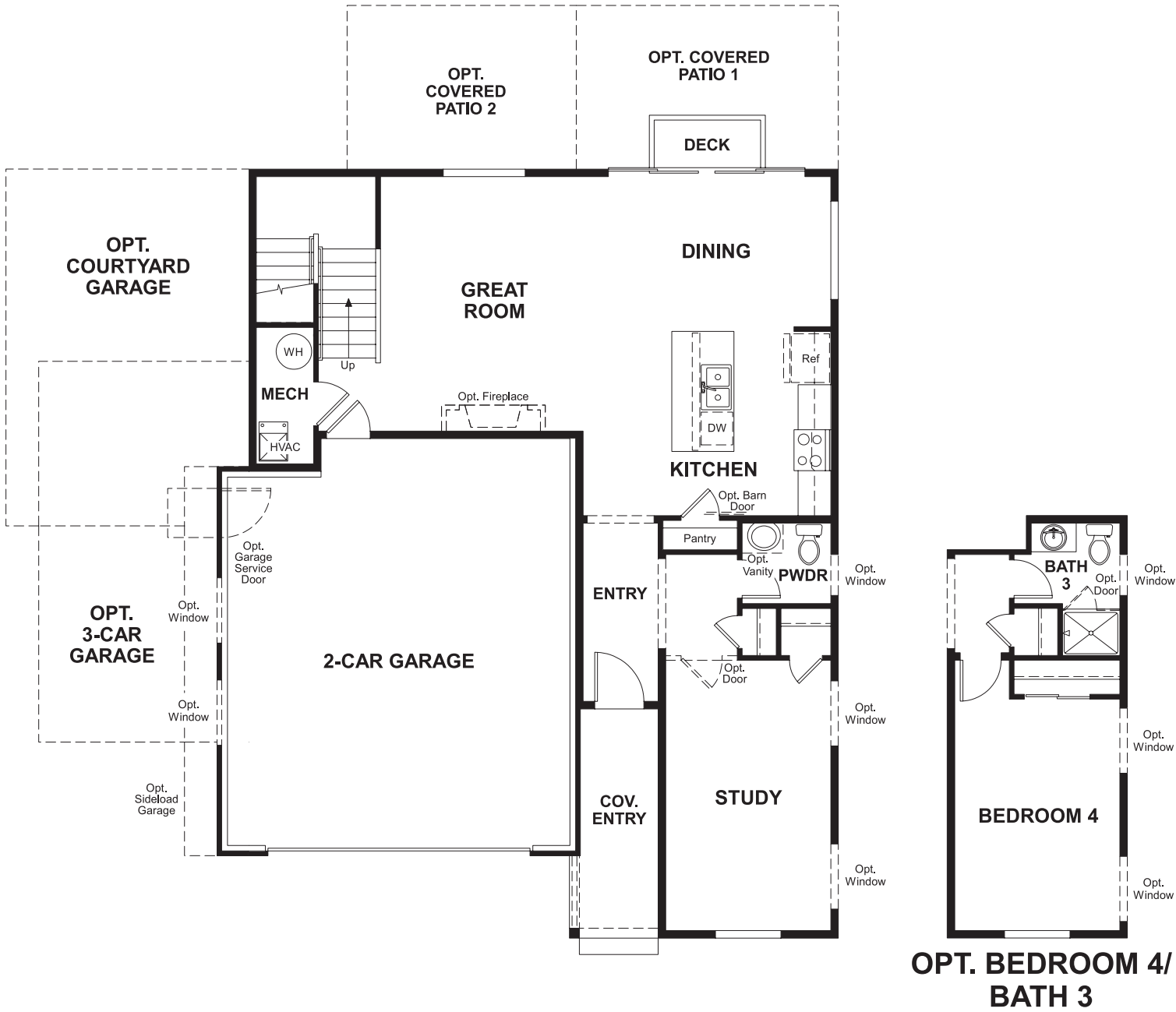


ELEVATION G

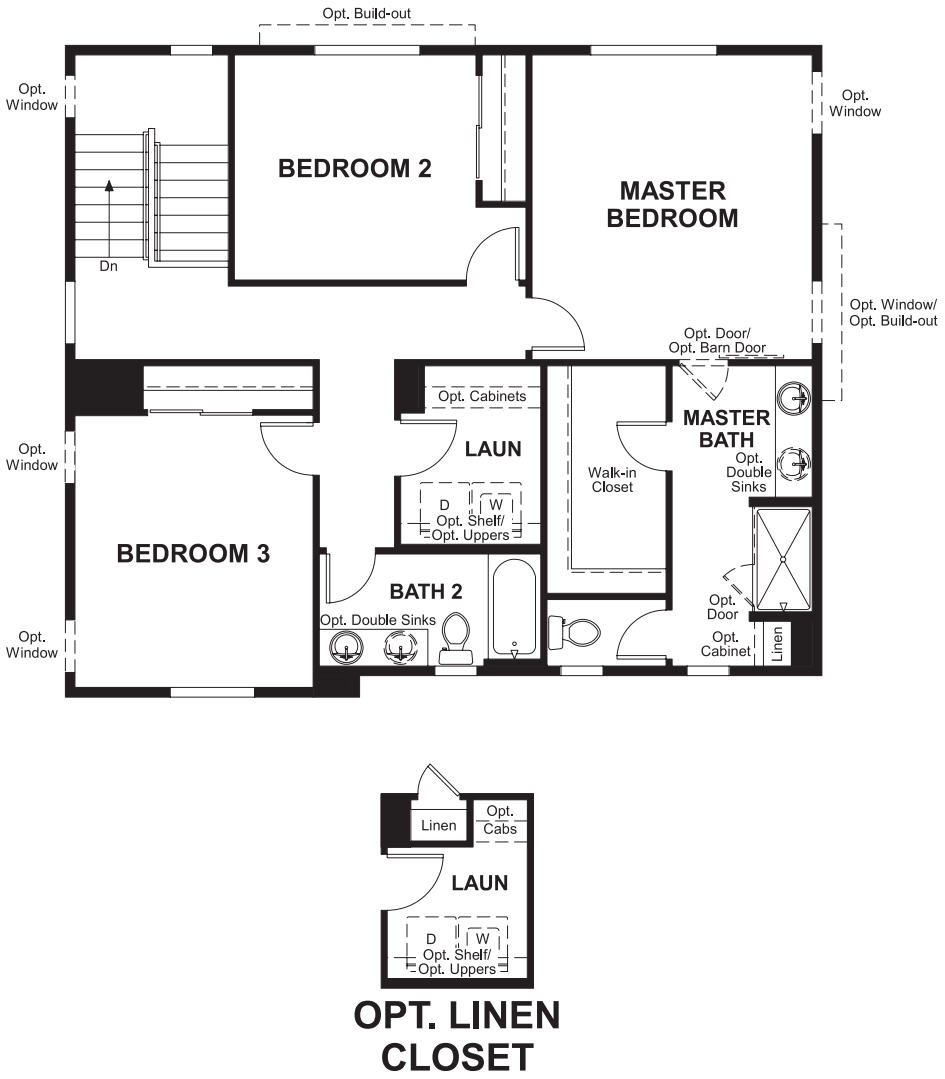


Floor plans and renderings are conceptual drawings and may vary from actual plans and homes as built. Options and features may not be available on all homes and are subject to change without notice. Actual homes may vary from photos and/or drawings which show upgraded landscaping and may not represent the lowest-priced homes in the community. Features may include optional upgrades and may not be available on all homes. Square footage numbers are approximate and are subject to change without notice. Prices, specifications and availability subject to change without notice. ©2018 Richmond American Homes, Richmond American Homes of Utah, Inc. (866-400-4131). 6/19/2018

MAIN FLOOR



SECOND FLOOR



Floor plans and renderings are conceptual drawings and may vary from actual plans and homes as built. Options and features may not be available on all homes and are subject to change without notice. Actual homes may vary from photos and/or drawings which show upgraded landscaping and may not represent the lowest-priced homes in the community. Features may include optional upgrades and may not be available on all homes. Square footage numbers are approximate and are subject to change without notice. Prices, specifications and availability subject to change without notice. ©2018 Richmond American Homes, Richmond American Homes of Utah, Inc. (866-400-4131). 6/19/2018

Floor plans and renderings are conceptual drawings and may vary from actual plans and homes as built. Options and features may not be available on all homes and are subject to change without notice. Actual homes may vary from photos and/or drawings which show upgraded landscaping and may not represent the lowest-priced homes in the community. Features may include optional upgrades and may not be available on all homes. Square footage numbers are approximate and are subject to change without notice. Prices, specifications and availability subject to change without notice. ©2018 Richmond American Homes, Richmond American Homes of Utah, Inc. (866-400-4131). 6/19/2018