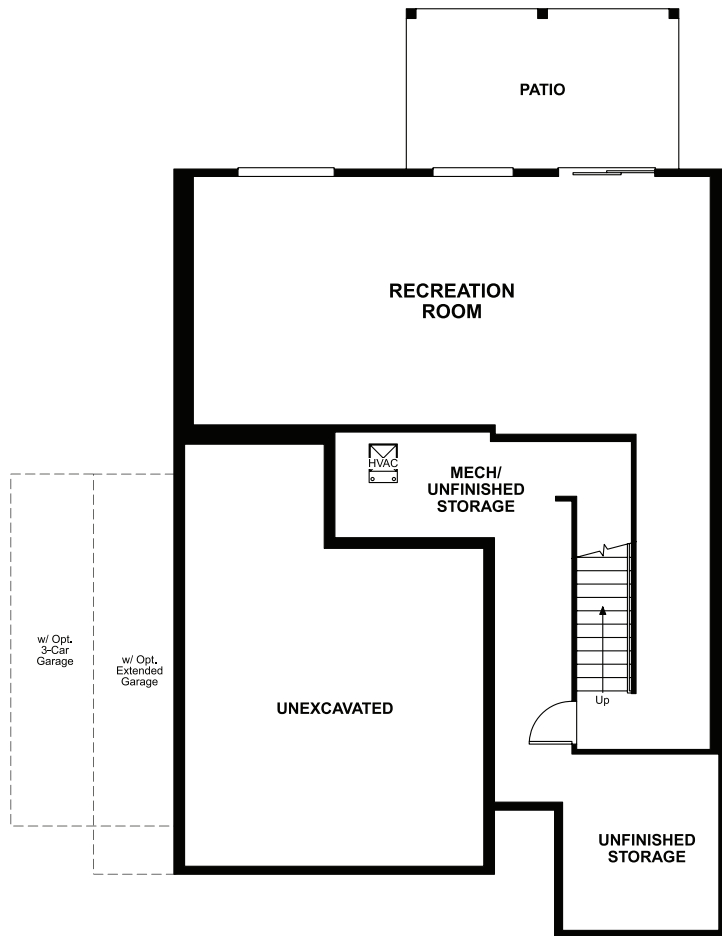
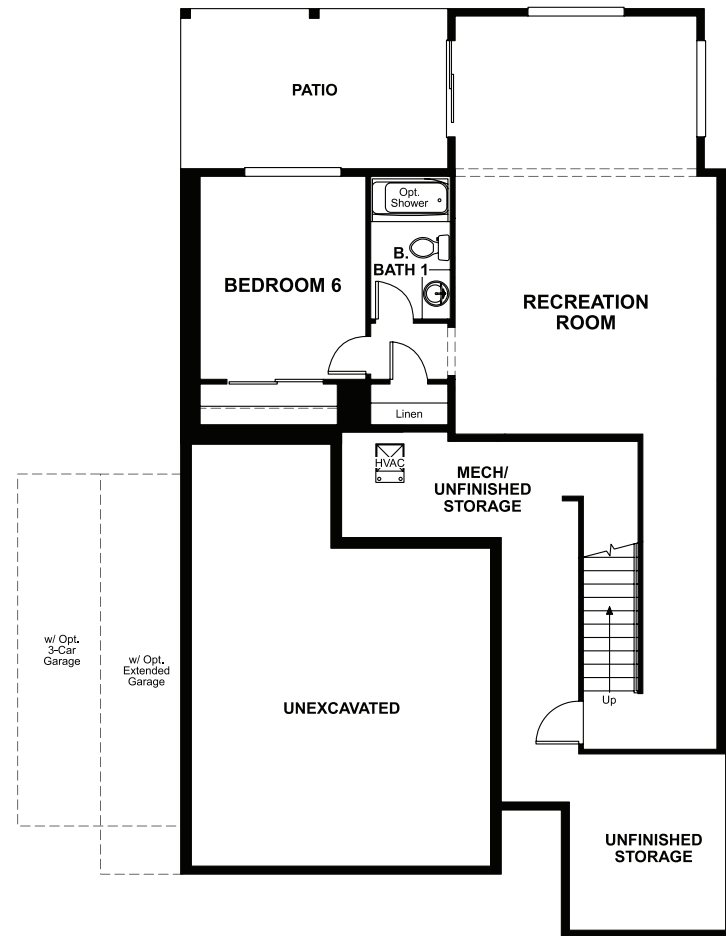


BASEMENT



OPT. WALKOUT BASEMENT 1



OPT. WALKOUT BASEMENT 2



ELEVATION C

ABOUT THE FLEMING

The main floor of the Fleming plan was designed for entertaining, with an open great room and a spacious kitchen with a center island, walk-in pantry and optional gourmet features. You'll also appreciate a quiet study just off the entry! Upstairs offers an inviting loft, which can be built as an extra bedroom, and an elegant master suite. Personalize this plan with options including a deluxe master bath, master retreat, 3-car garage, sunroom and finished basement.



ELEVATION A



ELEVATION B

HOME GALLERY LOCATION:

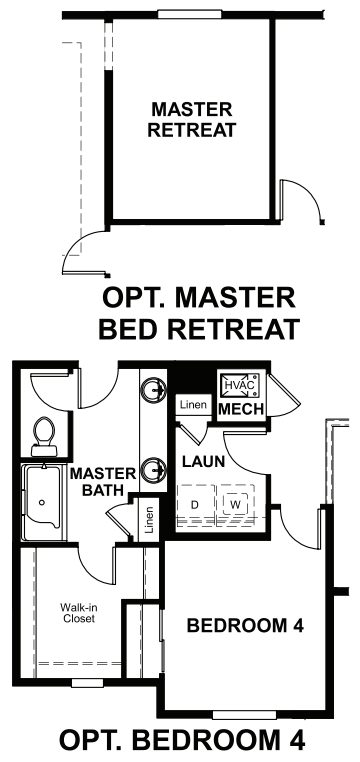
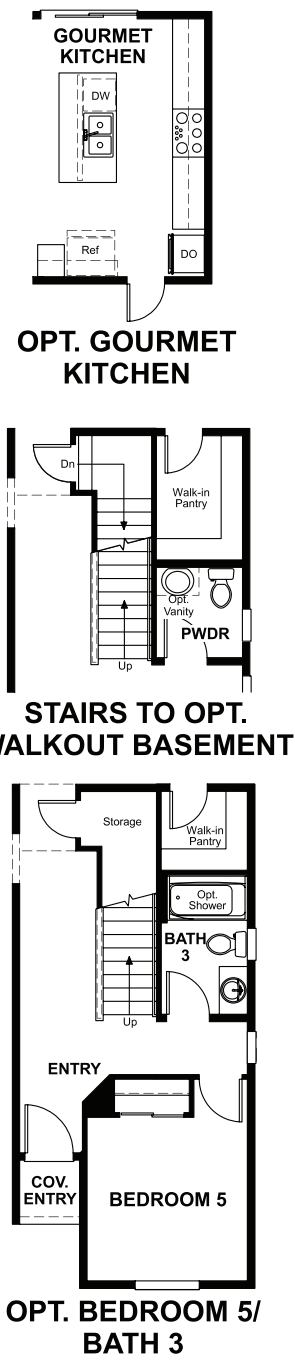
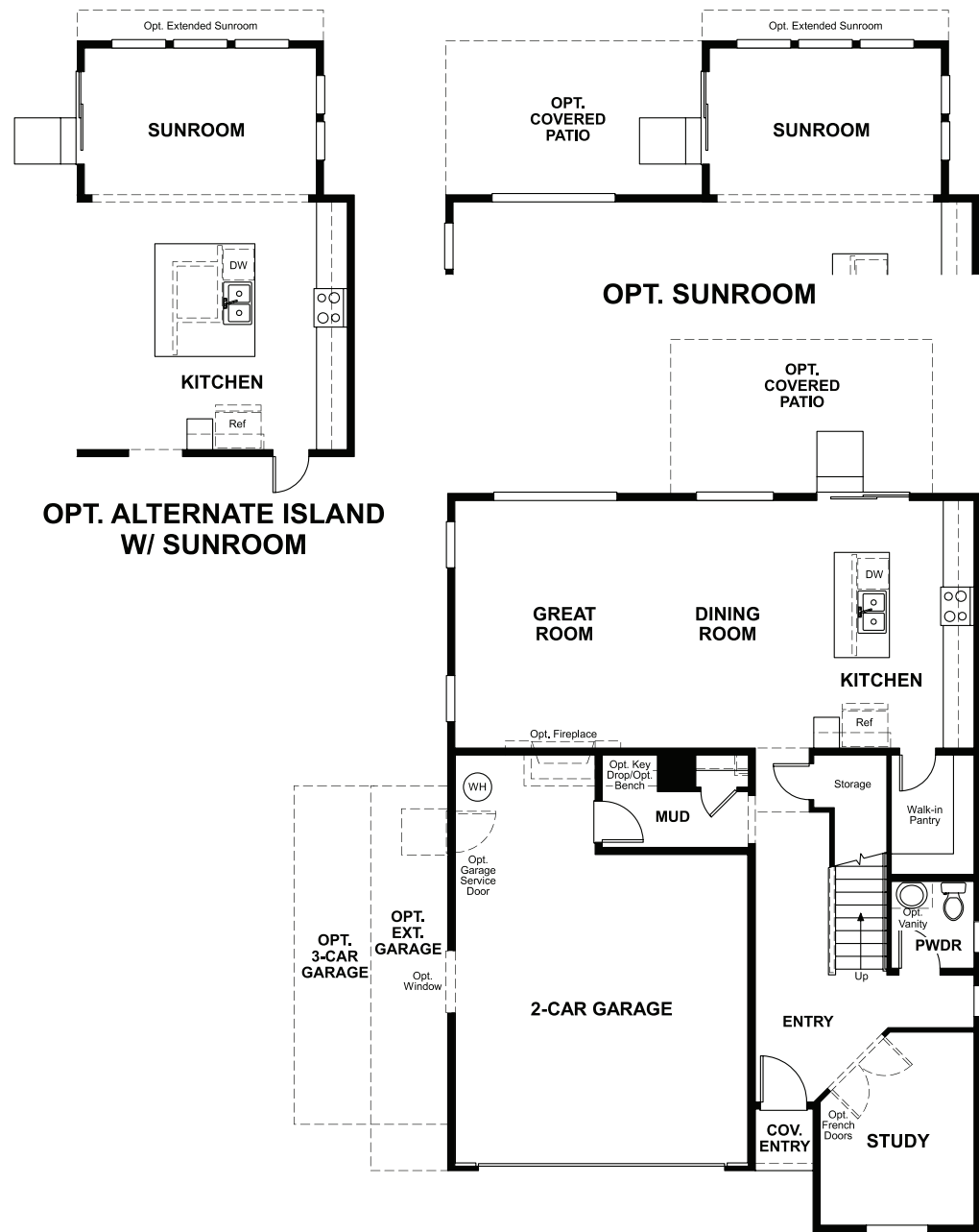
Oregon Home Gallery™ | 9899 Southwest 173rd Avenue | Beaverton, OR 97007 | 971.317.7520



Floor plans and renderings are conceptual drawings and may vary from actual plans and homes as built. Options and features may not be available on all homes and are subject to change without notice. Actual homes may vary from photos and/or drawings which show upgraded landscaping and may not represent the lowest-priced homes in the community. Features may include optional upgrades and may not be available on all homes. Square footage numbers are approximate and are subject to change without notice. Prices, specifications and availability subject to change without notice. ©2020 Richmond American Homes, Richmond American Homes of Oregon, Inc., CCB #218193. 6/19/2020

MAIN FLOOR

SECOND FLOOR



Floor plans and renderings are conceptual drawings and may vary from actual plans and homes as built. Options and features may not be available on all homes and are subject to change without notice. Actual homes may vary from photos and/or drawings which show upgraded landscaping and may not represent the lowest-priced homes in the community. Features may include optional upgrades and may not be available on all homes. Square footage numbers are approximate and are subject to change without notice. Prices, specifications and availability subject to change without notice. ©2020 Richmond American Homes, Richmond American Homes of Oregon, Inc., CCB #218193. 6/19/2020

Floor plans and renderings are conceptual drawings and may vary from actual plans and homes as built. Options and features may not be available on all homes and are subject to change without notice. Actual homes may vary from photos and/or drawings which show upgraded landscaping and may not represent the lowest-priced homes in the community. Features may include optional upgrades and may not be available on all homes. Square footage numbers are approximate and are subject to change without notice. Prices, specifications and availability subject to change without notice. ©2020 Richmond American Homes, Richmond American Homes of Oregon, Inc., CCB #218193. 6/19/2020