

THE PERRY

Approx. 3,300-3,570 sq. ft. | 2 stories | 5-6 bedrooms | 2- to 3-car garage | Plan #N697



ELEVATION C

ABOUT THE PERRY

This two-story plan welcomes guests with an inviting courtyard. Inside the home's entry is a powder bath and study that can be optioned as a 6th bedroom with full bath or an optional living suite with access to the front courtyard. The spacious great room offers an optional fireplace and steps out into the optional covered patio. A well-appointed kitchen with extended island and walk-in pantry is the highlight of this plan. A first floor bedroom with a full bath for visiting guest or extended family. Upstairs, an inviting loft, laundry room and three secondary bedrooms and full bathroom with tub/shower combination. The master suite offers an optional deck for relaxing evenings and the well-appointed master bathroom makes this a beautiful retreat for the owners.

COMMUNITY LOCATION:

Fox Chase at Woodward | 1473 Veterans Street | Manteca, CA 95337 | 209.207.0478

HOME GALLERY LOCATION:

Northern California Home Gallery™ | One Harbor Center, Suite 150 | Suisun City, CA 94585 | 707.416.2800

*This information is presented for education purposes only. The HERS index for a confirmed rating will be determined by a third-party HERS rater based on data gathered from on-site observations and, if required, testing of rated features for a home as featured, optioned, located, oriented and/or built.

+Standard new home is based on the RESNET® Reference Home definition with a HERS® index of 100 (based on the 2006 International Energy Conservation Code).

++Typical resale home is based on the U.S. Department of Energy definition with a HERS® index of 130.

^RESNET® has developed the HERS® index to indicate the comparative efficiencies of homes. It is no guarantee that energy efficiencies will be achieved.



Floor plans and renderings are conceptual drawings and may vary from actual plans and homes as built. Options and features may not be available on all homes and are subject to change without notice. Actual homes may vary from photos and/or drawings which show upgraded landscaping and may not represent the lowest-priced homes in the community. Features may include optional upgrades and may not be available on all homes. Square footage numbers are approximate and are subject to change without notice. Prices, specifications and availability subject to change without notice. ©2020 Richmond American Homes, Richmond American Homes of Maryland, Inc., California Bureau of Real Estate – Real Estate Broker, Corporation License Number 01842595. 1/15/2020



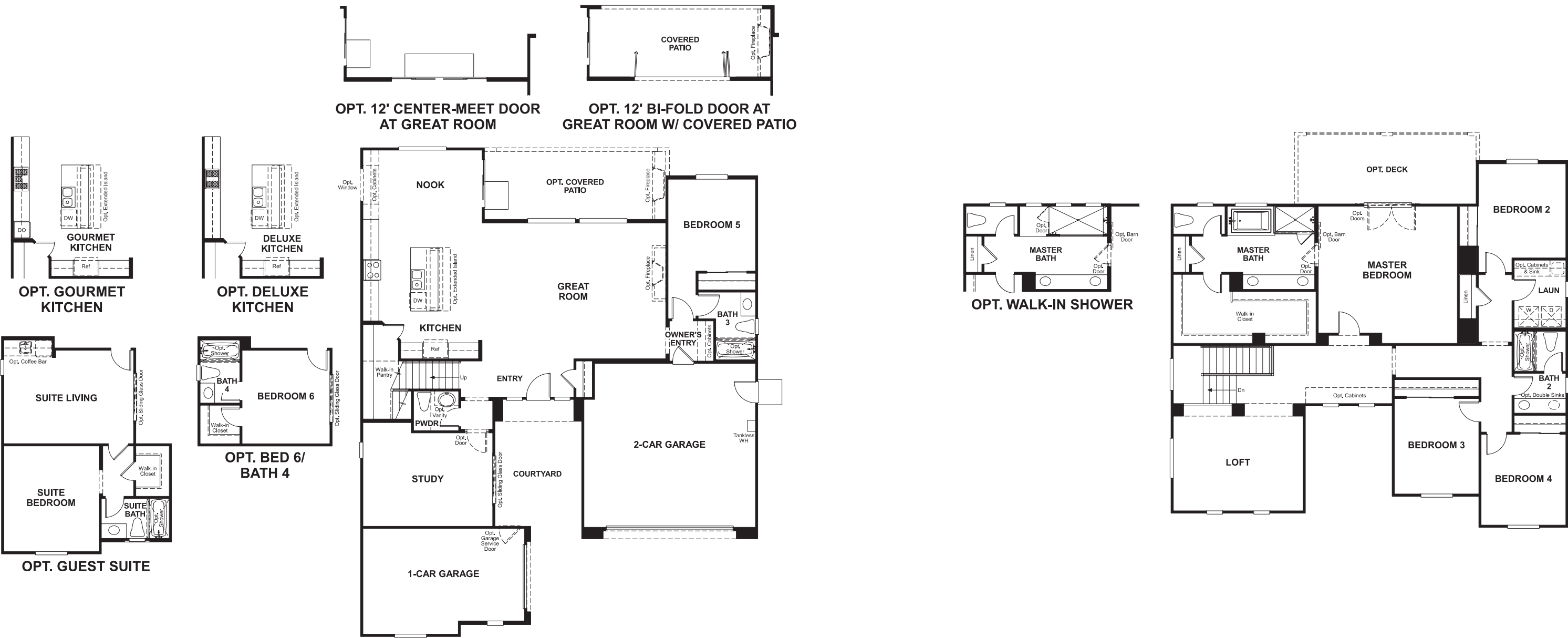
ELEVATION A



ELEVATION B

MAIN FLOOR

SECOND FLOOR



THIS PLAN'S PROJECTED
HERS® INDEX = 44*
Projected Rating Based on Plans – Field Confirmation required

How does this floor plan rate?
Take a look: **100** = Standard new home+ **130** = Typical resale Home++
The lower number, the better! Refer to the RESNET® HERS index brochure or go to www.RESNET.us and www.HERSindex.com

What's a HERS® Index? HERS stands for Home Energy Rating System, a system created by RESNET® to measure home energy efficiency.^
A Projected HERS index or rating is a computer simulation performed prior to construction by a third-party HERS rater using RESNET-accredited rating software, rated feature and specification data derived from home plans, features and specifications, and other data selected or assumed by the rater. The projected HERS index is approximate and is subject to change without notice. Actual results will vary.