

# THE DOMINIC

Approx. 2,500 sq. ft. | 1 story | 3-4 bedrooms | 2-car garage | Plan #L25B



ELEVATION C

## ABOUT THE DOMINIC

Imagine yourself in this stylish ranch plan: entertaining in the spacious great room with optional fireplace, checking off your to-do list in the secluded study, baking in your gourmet kitchen with two walk-in pantries, or relaxing in the large master bedroom tucked away at the back of the home.

## COMMUNITY LOCATION:

Adagio at Cadence | Lake Mead Drive & Warm Springs Road | Henderson, NV 89011 | 702.638.4440



ELEVATION A



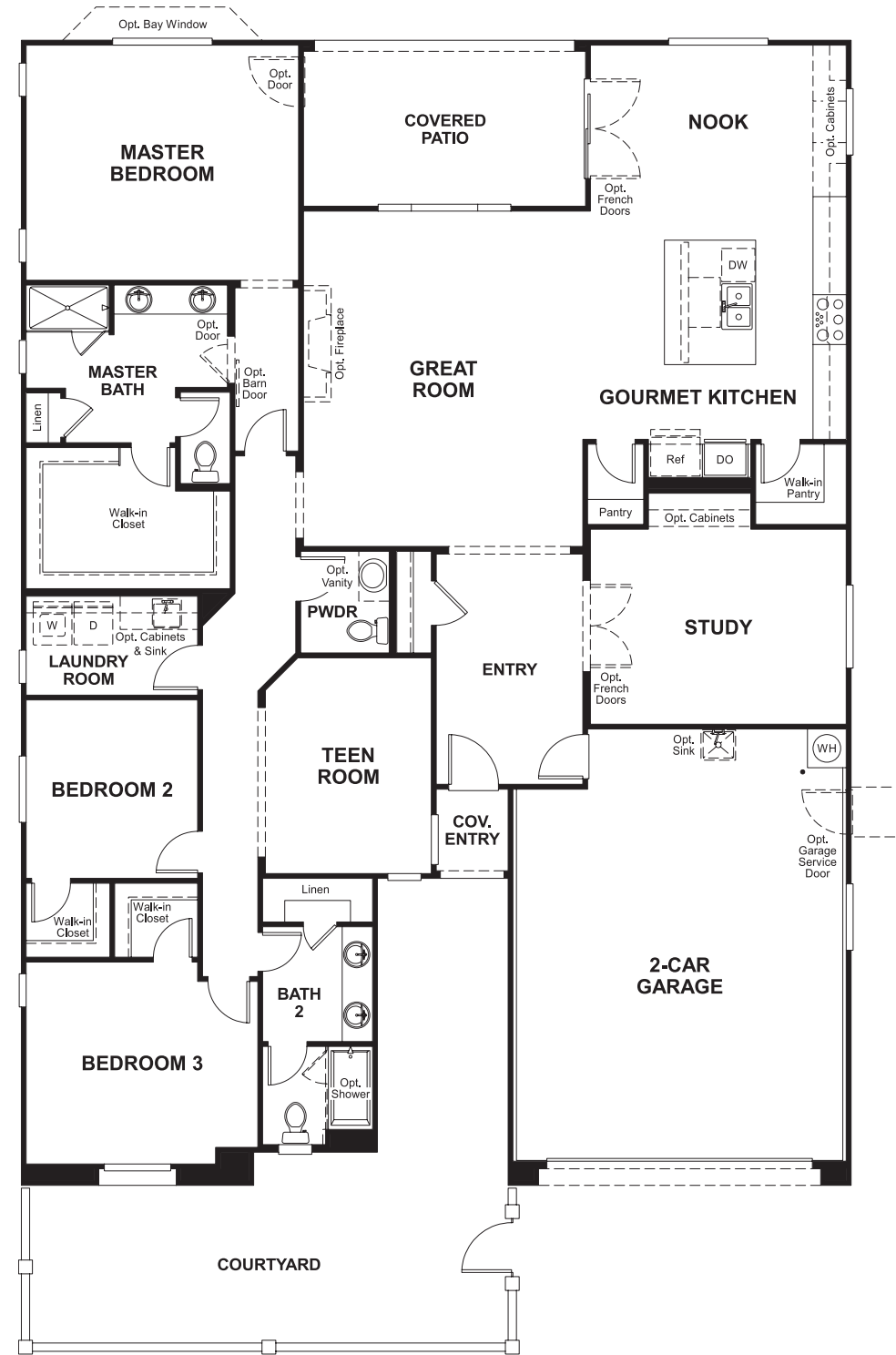
ELEVATION B



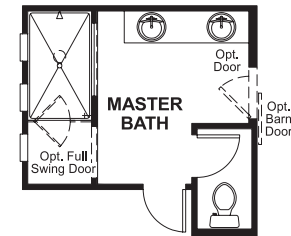
Floor plans and renderings are conceptual drawings and may vary from actual plans and homes as built. Options and features may not be available on all homes and are subject to change without notice. Actual homes may vary from photos and/or drawings which show upgraded landscaping and may not represent the lowest-priced homes in the community. Features may include optional upgrades and may not be available on all homes. Square footage numbers are approximate and are subject to change without notice. Prices, specifications and availability subject to change without notice. ©2019 Richmond American Homes. In Nevada, homes are offered by Richmond American Homes of Nevada, Inc. (Nevada Contractor License #0026417.) 1/3/2019

MAIN FLOOR

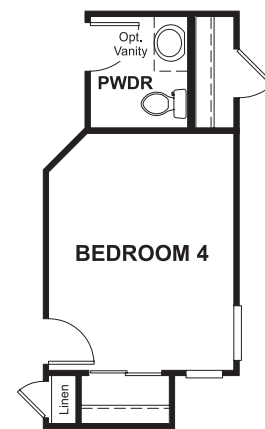
MAIN FLOOR OPTIONS



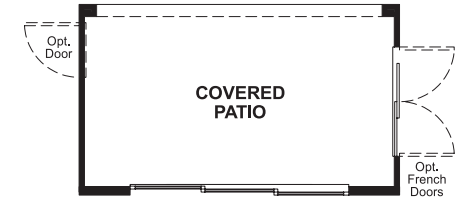
OPT. DELUXE MASTER BATH



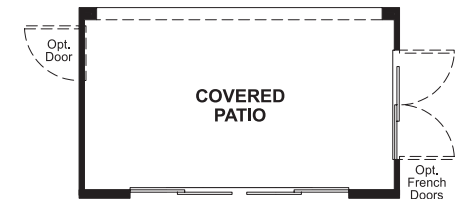
OPT. WALK-IN SHOWER AT MASTER BATH



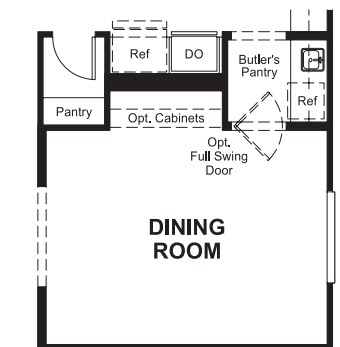
OPT. BEDROOM #4



OPT. MULTI-SLIDE DOOR



OPT. CENTER-MEET SLIDING DOOR



OPT. DINING W/ BUTLER'S

Floor plans and renderings are conceptual drawings and may vary from actual plans and homes as built. Options and features may not be available on all homes and are subject to change without notice. Actual homes may vary from photos and/or drawings which show upgraded landscaping and may not represent the lowest-priced homes in the community. Features may include optional upgrades and may not be available on all homes. Square footage numbers are approximate and are subject to change without notice. Prices, specifications and availability subject to change without notice. ©2019 Richmond American Homes. In Nevada, homes are offered by Richmond American Homes of Nevada, Inc. (Nevada Contractor License #0026417.) 1/3/2019

Floor plans and renderings are conceptual drawings and may vary from actual plans and homes as built. Options and features may not be available on all homes and are subject to change without notice. Actual homes may vary from photos and/or drawings which show upgraded landscaping and may not represent the lowest-priced homes in the community. Features may include optional upgrades and may not be available on all homes. Square footage numbers are approximate and are subject to change without notice. Prices, specifications and availability subject to change without notice. ©2019 Richmond American Homes. In Nevada, homes are offered by Richmond American Homes of Nevada, Inc. (Nevada Contractor License #0026417.) 1/3/2019