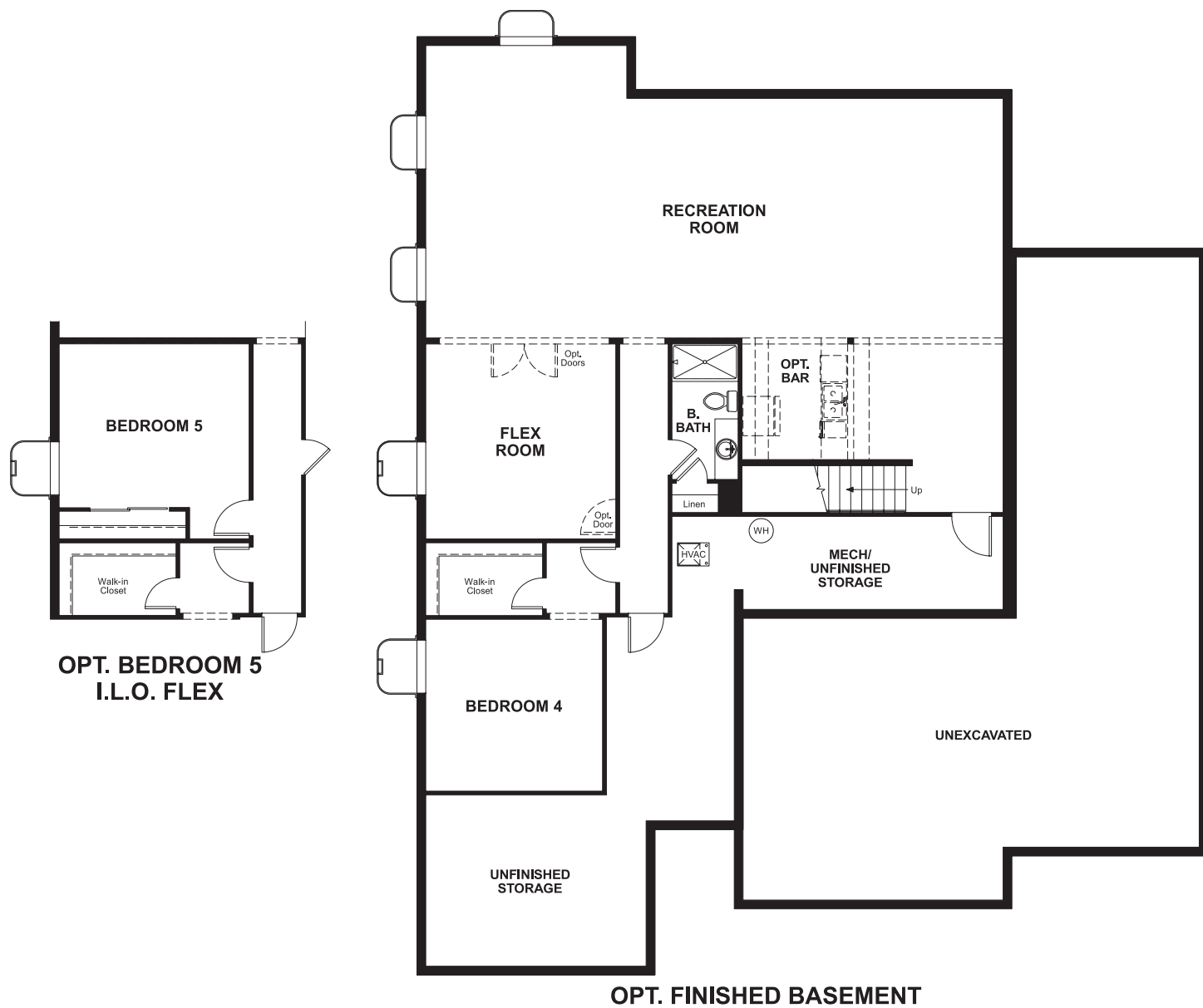


THE HARRIS

Approx. 2,450 sq. ft. | 1 story | 3-5 bedrooms | 3-car garage | Plan #D23H

BASEMENT



ELEVATION C

ABOUT THE HARRIS

Designed for entertaining, the ranch-style Harris plan offers a formal dining room, an open great room and a well-appointed kitchen with a spacious center island. Three generous bedrooms, including an elegant master suite with attached bath, provide ample space for rest and relaxation. A convenient laundry, 2-car garage and RV garage are also included. Personalize this plan with a private study in lieu of the dining room, gourmet or professional kitchen features and a finished basement!



ELEVATION A



ELEVATION B

COMMUNITY LOCATION:

The Landing at Cobblestone Ranch | 6289 Leilani Drive | Castle Rock, CO 80108 | 303.651.0489

*This information is presented for education purposes only. The HERS index for a confirmed rating will be determined by a third-party HERS rater based on data gathered from on-site observations and, if required, testing of rated features for a home as featured, optioned, located, oriented and/or built.

+Standard new home is based on the RESNET® Reference Home definition with a HERS® index of 100 (based on the 2006 International Energy Conservation Code).

++Typical resale home is based on the U.S. Department of Energy definition with a HERS® index of 130.

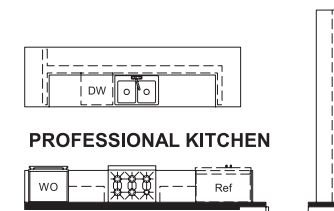
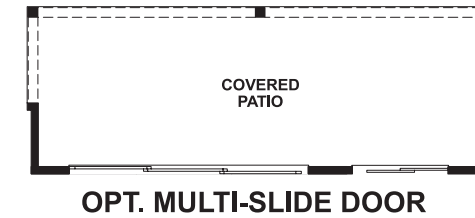
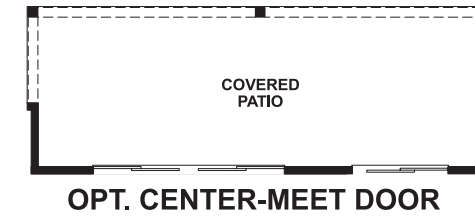
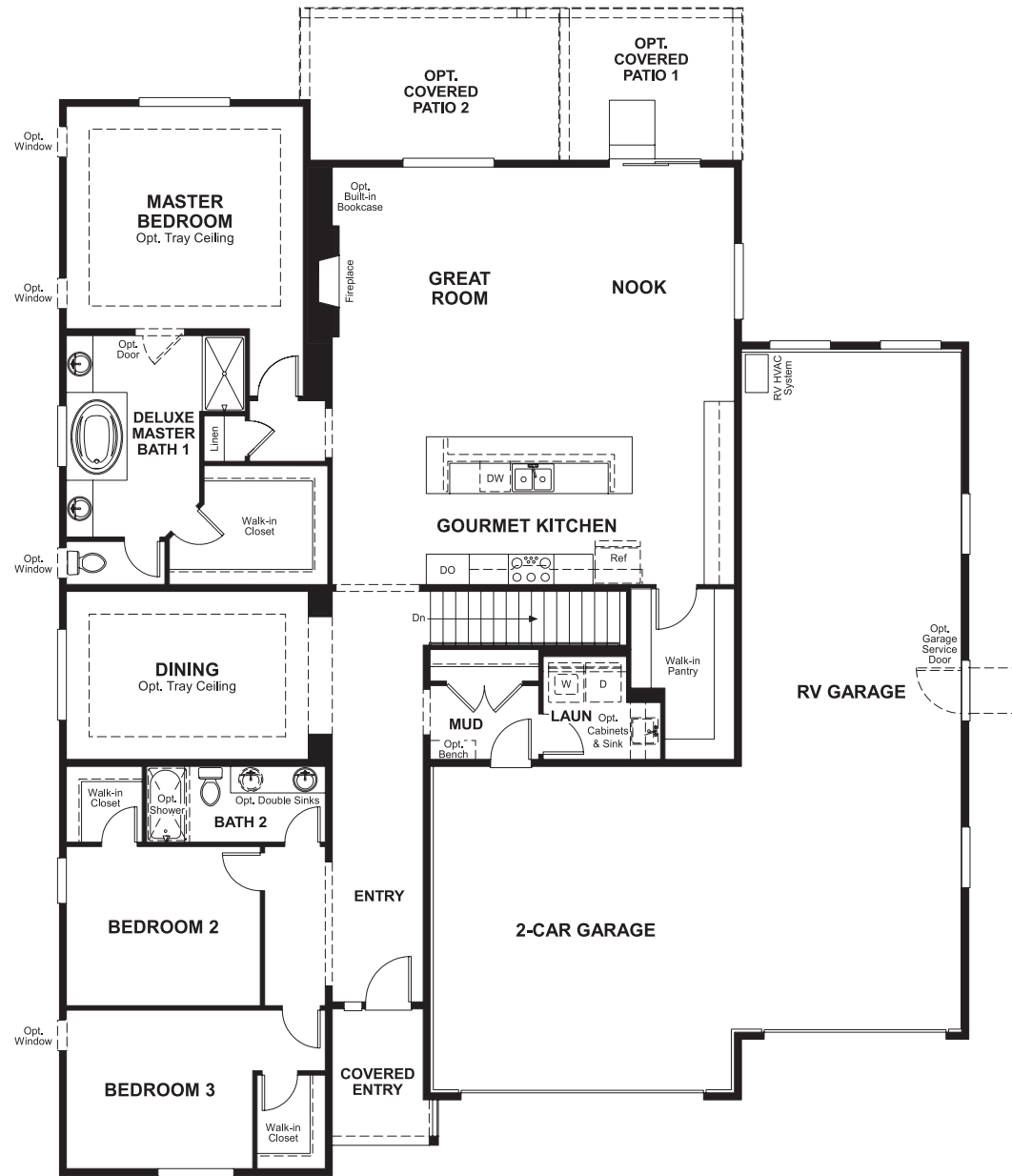
^RESNET® has developed the HERS® index to indicate the comparative efficiencies of homes. It is no guarantee that energy efficiencies will be achieved.



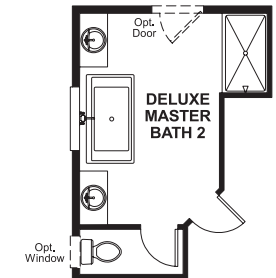
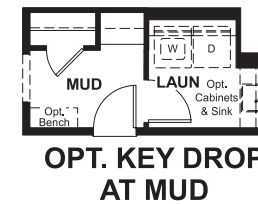
Floor plans and renderings are conceptual drawings and may vary from actual plans and homes as built. Options and features may not be available on all homes and are subject to change without notice. Actual homes may vary from photos and/or drawings which show upgraded landscaping and may not represent the lowest-priced homes in the community. Features may include optional upgrades and may not be available on all homes. Square footage numbers are approximate and are subject to change without notice. ©2020 Richmond American Homes, Richmond American Homes of Colorado, Inc. 5/04/2020

MAIN FLOOR

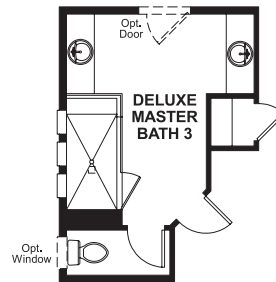
MAIN FLOOR OPTIONS



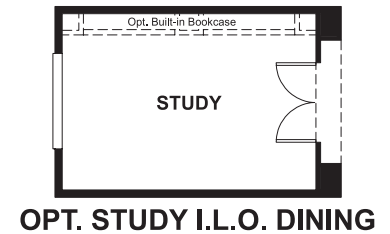
OPT. PROFESSIONAL KITCHEN



OPT. DELUXE MASTER BATH 2



OPT. DELUXE MASTER BATH 3



THIS PLAN'S PROJECTED
HERS® INDEX = 56*
Projected Rating Based on Plans – Field Confirmation required

How does this floor plan rate?

Take a look: **100** = Standard new home+ **130** = Typical resale Home++
The lower number, the better! Refer to the RESNET® HERS index brochure or go to www.RESNET.us and www.HERSindex.com

What's a HERS® Index? HERS stands for Home Energy Rating System, a system created by RESNET® to measure home energy efficiency. A Projected HERS index or rating is a computer simulation performed prior to construction by a third-party HERS rater using RESNET-accredited rating software, rated feature and specification data derived from home plans, features and specifications, and other data selected or assumed by the rater. The projected HERS index is approximate and is subject to change without notice. Actual results will vary.