



ELEVATION C

ABOUT THE YORKTOWN

The main floor of the Yorktown was designed for entertaining, offering an expansive great room with an open dining room overlooking a covered patio and backyard and a well-appointed kitchen with a large center island. The 3-car garage leads to a convenient mudroom with walk-in closet, a powder room and a private study. On the second floor, there's an immense loft surrounded by three bedrooms, a shared bath, a laundry room and a master suite with its own bath and spacious walk-in closet. Options include a morning room, an extra bedroom and deluxe bath options.

COMMUNITY LOCATION:

Canyon Trails North | 17818 West Lilac Street | Goodyear, AZ 85338 | **623.404.7264**

*This information is presented for education purposes only. The HERS index for a confirmed rating will be determined by a third-party HERS rater based on data gathered from on-site observations and, if required, testing of rated features for a home as featured, optioned, located, oriented and/or built.

+Standard new home is based on the RESNET® Reference Home definition with a HERS® index of 100 (based on the 2006 International Energy Conservation Code).

++Typical resale home is based on the U.S. Department of Energy definition with a HERS® index of 130.

^RESNET® has developed the HERS® index to indicate the comparative efficiencies of homes. It is no guarantee that energy efficiencies will be achieved.

Floor plans and renderings are conceptual drawings and may vary from actual plans and homes as built. Options and features may not be available on all homes and are subject to change without notice. Actual homes may vary from photos and/or drawings which show upgraded landscaping and may not represent the lowest-priced homes in the community. Features may include optional upgrades and may not be available on all homes. Square footage numbers are approximate and are subject to change without notice. ©2018 Richmond American Homes, Richmond American Homes of Arizona, Inc. (a public report is available on the state real estate department's website), Richmond American Construction, Inc. ROC #206612. 9/11/2018



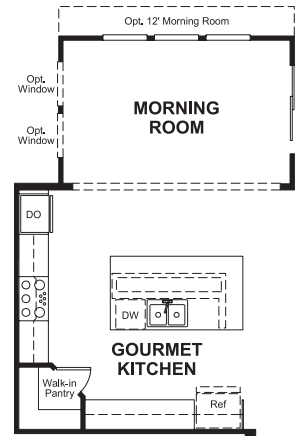
ELEVATION A



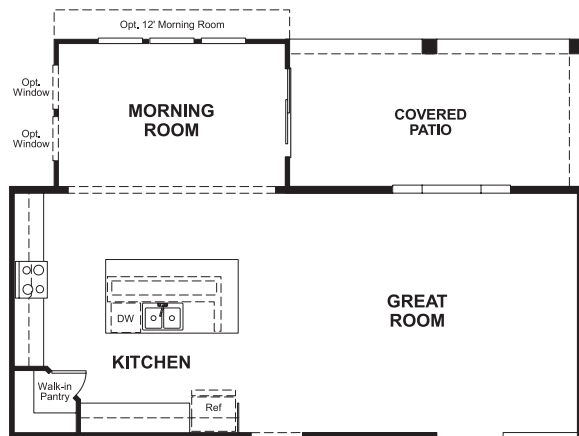
ELEVATION B

MAIN FLOOR

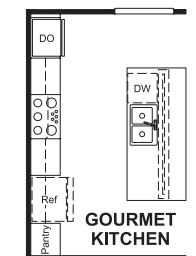
SECOND FLOOR



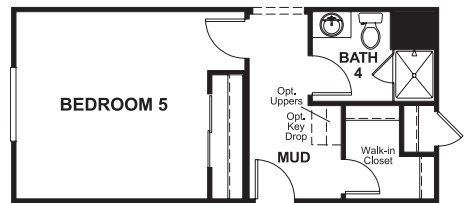
OPT. GOURMET KITCHEN AT MORNING ROOM



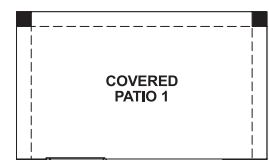
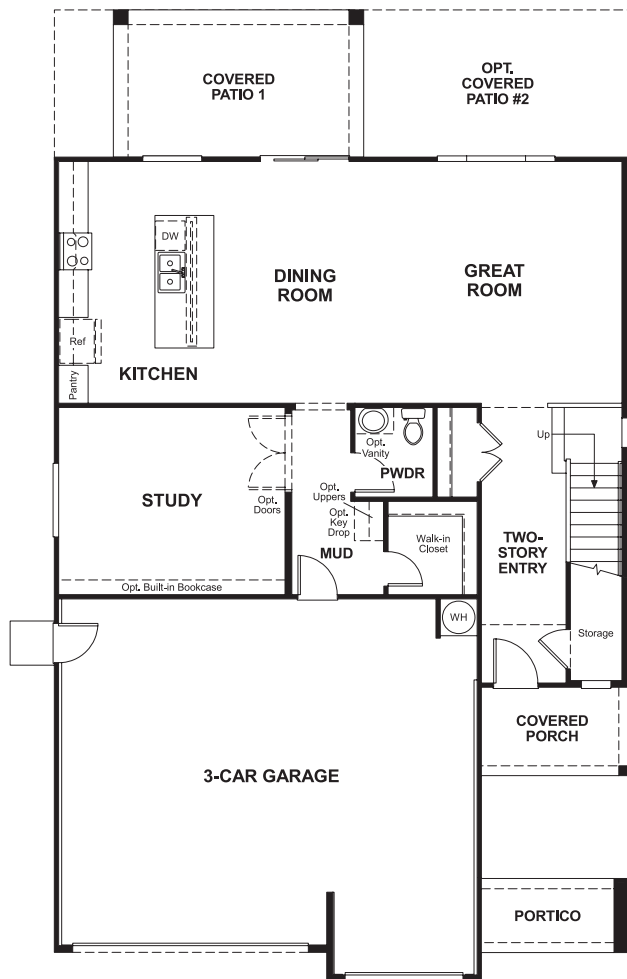
OPT. MORNING ROOM



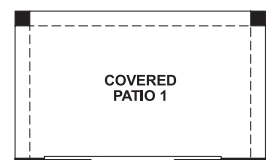
OPT. GOURMET KITCHEN



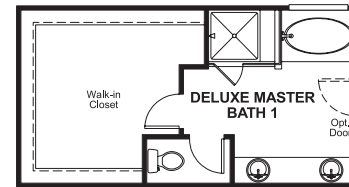
OPT. BEDROOM 5/BATH 4



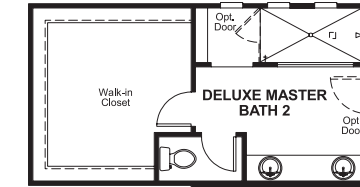
OPT. MULTI-SLIDE DOOR



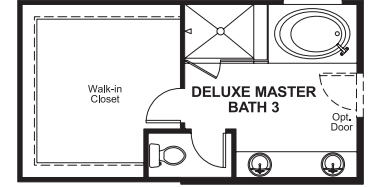
OPT. CENTER MEET DOOR



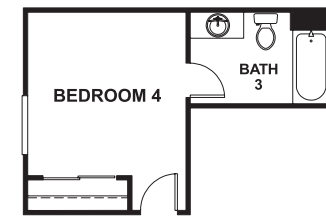
OPT. DELUXE MASTER BATH #1



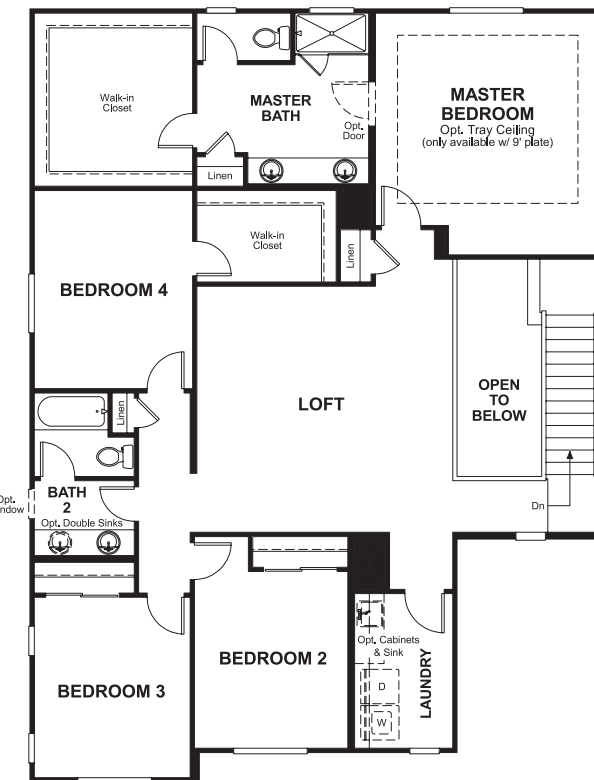
OPT. DELUXE MASTER BATH #2



OPT. DELUXE MASTER BATH #3



OPT. BATH 3 AT BEDROOM 4



THIS PLAN'S PROJECTED
HERS® INDEX = 60*
Projected Rating Based on Plans – Field Confirmation required

How does this floor plan rate?
Take a look: **100** = Standard new home+ **130** = Typical resale Home++
The lower number, the better! Refer to the RESNET® HERS index brochure or go to www.RESNET.us and www.HERSindex.com

What's a HERS® Index? HERS stands for Home Energy Rating System, a system created by RESNET® to measure home energy efficiency. A Projected HERS index or rating is a computer simulation performed prior to construction by a third-party HERS rater using RESNET-accredited rating software, rated feature and specification data derived from home plans, features and specifications, and other data selected or assumed by the rater. The projected HERS index is approximate and is subject to change without notice. Actual results will vary.