

THE RYDER

Approx. 3,750 sq. ft. | 1 story | 4 bedrooms | 3-car garage | Plan #L38R



ELEVATION D

ABOUT THE RYDER

The Ryder offers a smartly designed layout packed with personalization options. Love outdoor living? Add a courtyard entry. Are you a top chef? Opt for a professional kitchen package. Looking for the ultimate spa experience? Select a free-standing tub or expansive walk-in shower for the master bath. You'll also appreciate a large covered patio—accessible from the great room and breakfast nook—a formal dining room, a secluded study and a versatile game room with an optional fireplace. Also includes two garages!

COMMUNITY LOCATION:

Scots Pine at Summerlin | 789 Thistle Fairway Street | Las Vegas, NV 89138 | 702.638.4440

*This information is presented for education purposes only. The HERS index for a confirmed rating will be determined by a third-party HERS rater based on data gathered from on-site observations and, if required, testing of rated features for a home as featured, optioned, located, oriented and/or built.

+Standard new home is based on the RESNET® Reference Home definition with a HERS® index of 100 (based on the 2006 International Energy Conservation Code).

++Typical resale home is based on the U.S. Department of Energy definition with a HERS® index of 130.

^RESNET® has developed the HERS® index to indicate the comparative efficiencies of homes. It is no guarantee that energy efficiencies will be achieved.

Floor plans and renderings are conceptual drawings and may vary from actual plans and homes as built. Options and features may not be available on all homes and are subject to change without notice. Actual homes may vary from photos and/or drawings which show upgraded landscaping and may not represent the lowest-priced homes in the community. Features may include optional upgrades and may not be available on all homes. Square footage numbers are approximate and are subject to change without notice. ©2019 Richmond American Homes, Richmond American Homes of Colorado, Inc. 5/2/2019



ELEVATION A



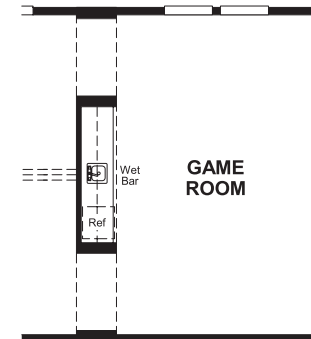
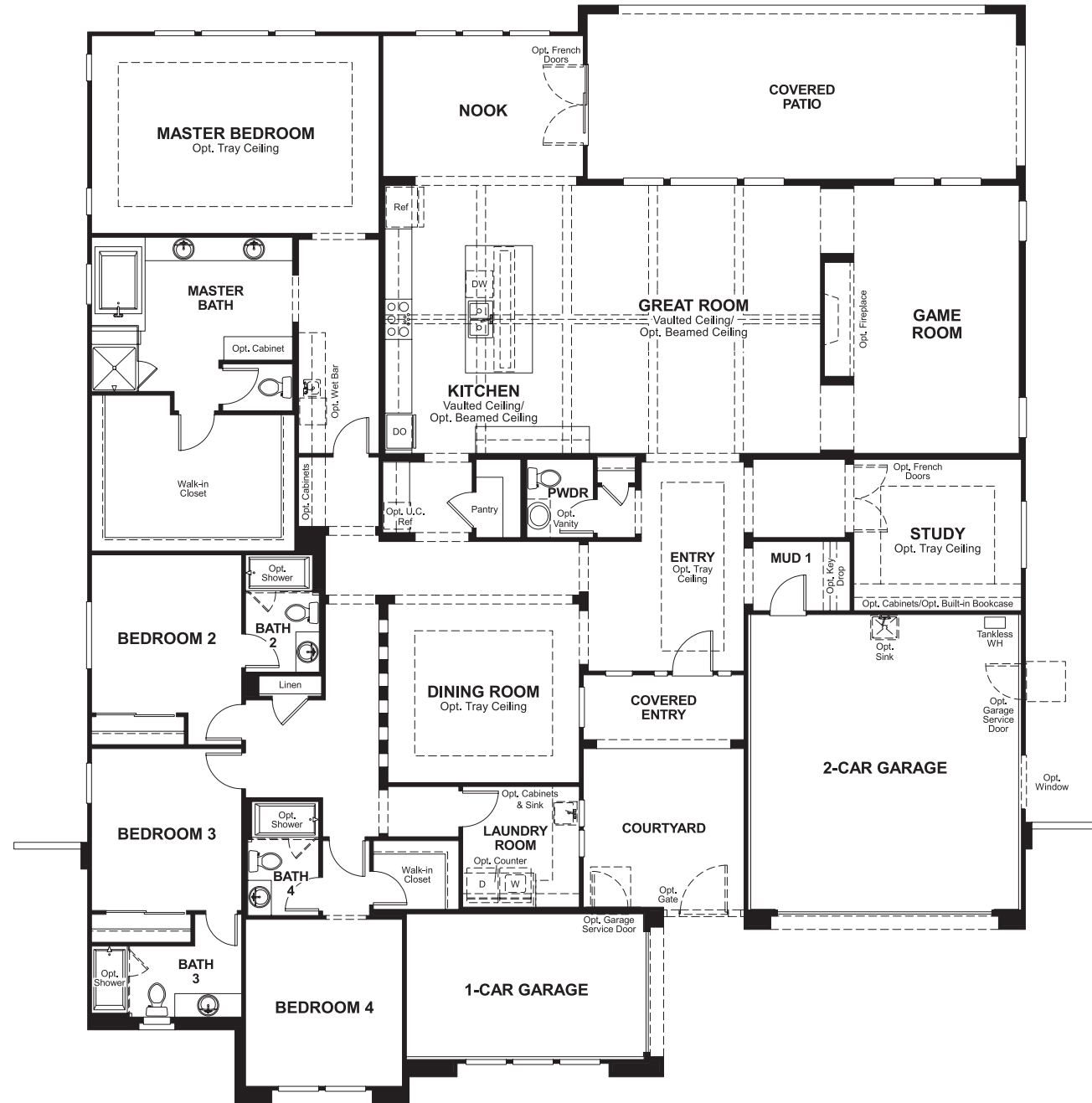
ELEVATION B



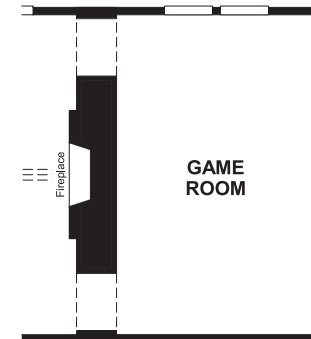
ELEVATION C

MAIN FLOOR

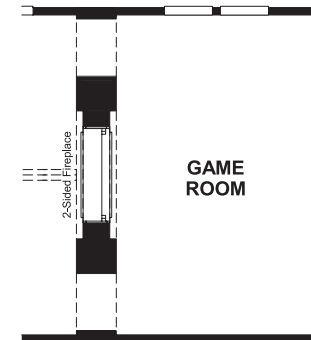
MAIN FLOOR OPTIONS



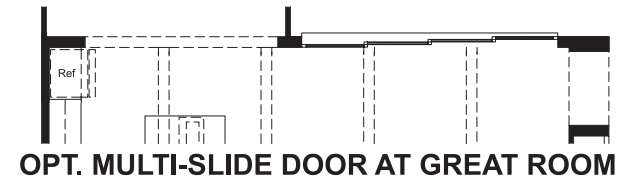
OPT. WET BAR AT GAME ROOM



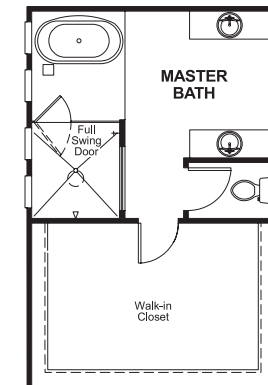
OPT. FIREPLACE AT GREAT ROOM



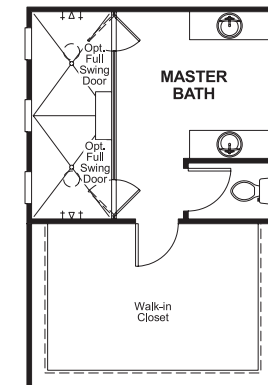
OPT. TWO-SIDED FIREPLACE



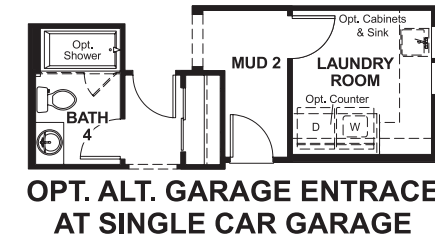
OPT. MULTI-SLIDE DOOR AT GREAT ROOM



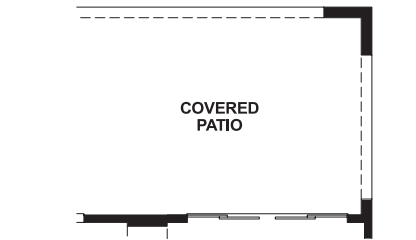
OPT. MASTER BATH SPA BATH W/ FREE-STANDING TUB



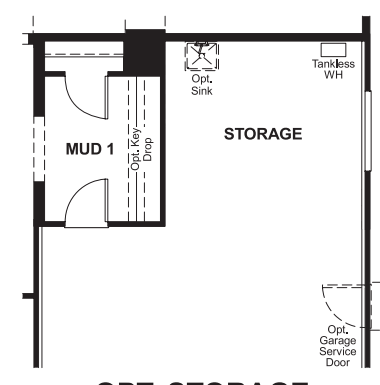
OPT. MASTER BATH WALK-IN SHOWER



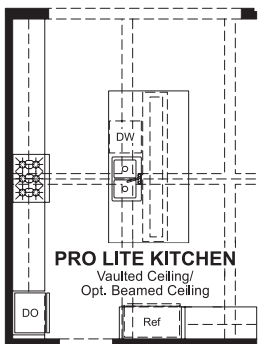
OPT. ALT. GARAGE ENTRANCE AT SINGLE CAR GARAGE



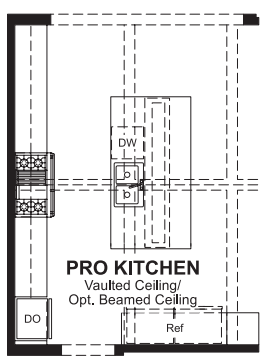
OPT. CENTER-MEET DOOR AT GAME ROOM



OPT. STORAGE



OPT. PROFESSIONAL LITE KITCHEN



OPT. PROFESSIONAL KITCHEN

THIS PLAN'S PROJECTED **HERS® INDEX = 60***
 Projected Rating Based on Plans – Field Confirmation required

How does this floor plan rate?
 Take a look: **100** = Standard new home+ **130** = Typical resale Home++
 The lower number, the better! Refer to the RESNET® HERS index brochure or go to www.RESNET.us and www.HERSindex.com

What's a HERS® Index? HERS stands for Home Energy Rating System, a system created by RESNET® to measure home energy efficiency. ^
 A Projected HERS index or rating is a computer simulation performed prior to construction by a third-party HERS rater using RESNET-accredited rating software, rated feature and specification data derived from home plans, features and specifications, and other data selected or assumed by the rater. The projected HERS index is approximate and is subject to change without notice. Actual results will vary.