



ELEVATION C

ABOUT THE OXFORD

At the front of the ranch-style Oxford plan, you'll find an inviting covered entry, a study and two comfortable bedrooms—each with a walk-in closet. Toward the back of the home, there's an open great room with optional fireplace, a sunny nook and a kitchen with gourmet features. The master suite is separated from the other bedrooms for privacy, and includes an en-suite bath with options for a walk-in shower or a separate tub and shower. Personalize this plan with a fourth bedroom in lieu of the private study and your choice of two covered patio designs at the back of the home.

COMMUNITY LOCATION:

Agave Crest | 9781 Desert Spoon Avenue | Las Vegas, NV 89149 | **702.638.4440**

*This information is presented for education purposes only. The HERS index for a confirmed rating will be determined by a third-party HERS rater based on data gathered from on-site observations and, if required, testing of rated features for a home as featured, optioned, located, oriented and/or built.

+Standard new home is based on the RESNET® Reference Home definition with a HERS® index of 100 (based on the 2006 International Energy Conservation Code).

++Typical resale home is based on the U.S. Department of Energy definition with a HERS® index of 130.

^RESNET® has developed the HERS® index to indicate the comparative efficiencies of homes. It is no guarantee that energy efficiencies will be achieved.



Floor plans and renderings are conceptual drawings and may vary from actual plans and homes as built. Options and features may not be available on all homes and are subject to change without notice. Actual homes may vary from photos and/or drawings which show upgraded landscaping and may not represent the lowest-priced homes in the community. Features may include optional upgrades and may not be available on all homes. Square footage numbers are approximate and are subject to change without notice. ©2019 Richmond American Homes. In Nevada, homes are offered by Richmond American Homes of Nevada, Inc. (Nevada Contractor License #0026417.) 4/23/2019



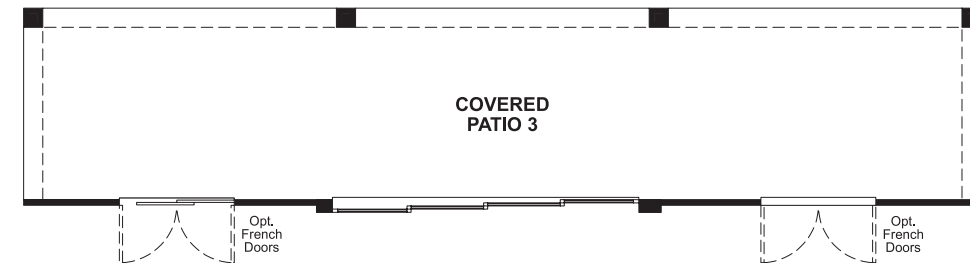
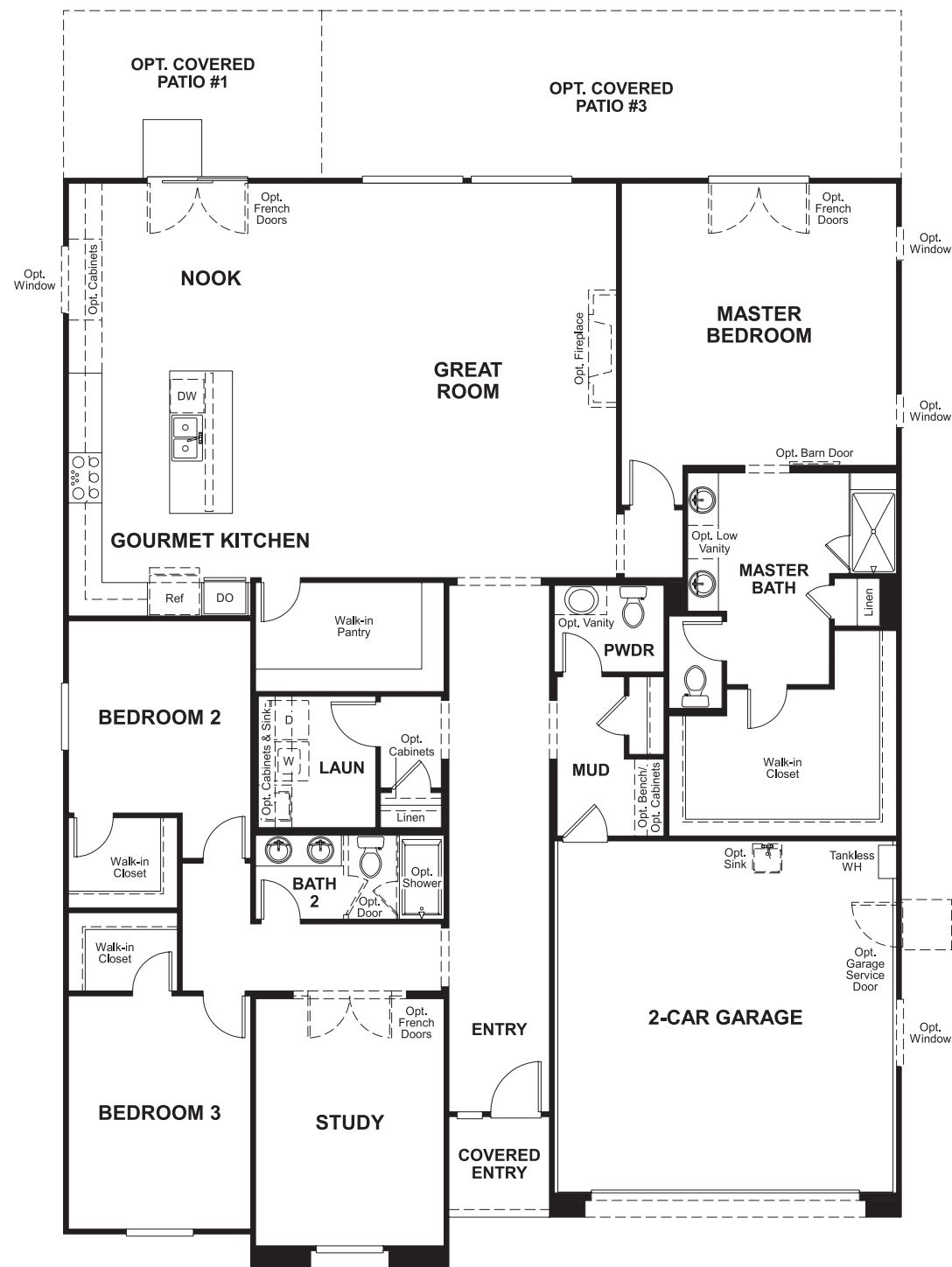
ELEVATION A



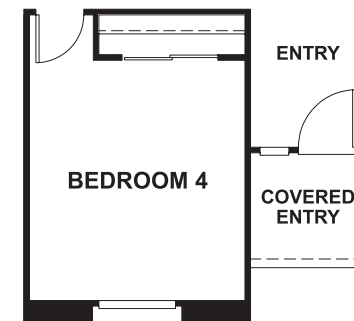
ELEVATION B

MAIN FLOOR

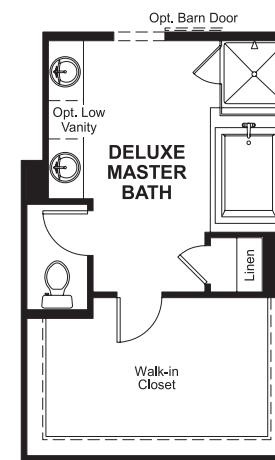
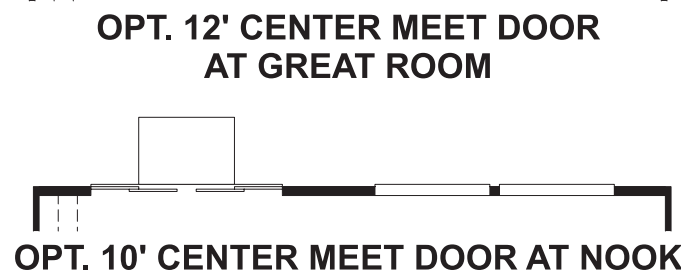
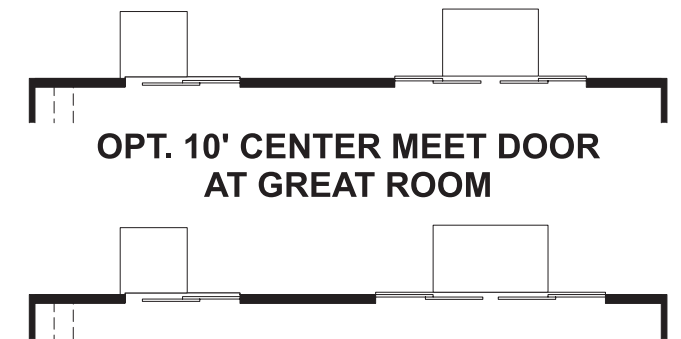
MAIN FLOOR OPTIONS



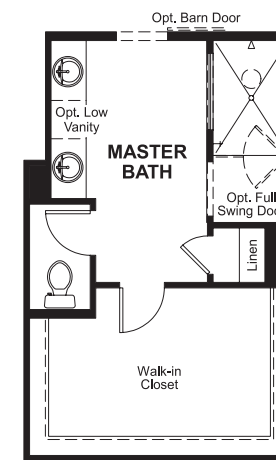
OPT. MULTI-SLIDE DOOR AT GREAT ROOM



OPT. BEDROOM #4 ILO STUDY



OPT. DELUXE MASTER BATH



OPT. MASTER BATH W/ WALK-IN SHOWER

THIS PLAN'S PROJECTED **HERS® INDEX = 58***

How does this floor plan rate?

Take a look: **100** = Standard new home+ **130** = Typical resale Home++
The lower number, the better! Refer to the RESNET® HERS index brochure or go to www.RESNET.us and www.HERSindex.com

What's a HERS® Index? HERS stands for Home Energy Rating System, a system created by RESNET® to measure home energy efficiency. ^

A Projected HERS index or rating is a computer simulation performed prior to construction by a third-party HERS rater using RESNET-accredited rating software, rated feature and specification data derived from home plans, features and specifications, and other data selected or assumed by the rater. The projected HERS index is approximate and is subject to change without notice. Actual results will vary.