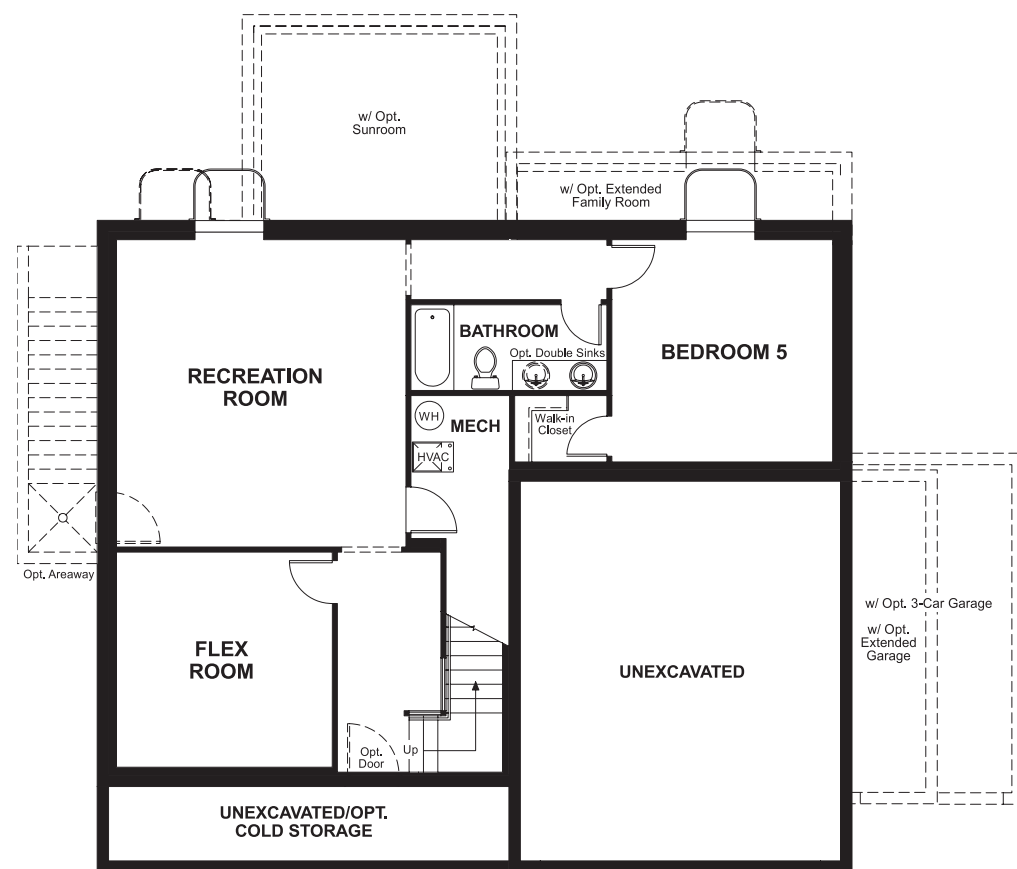


BASEMENT



OPT. FINISHED BASEMENT



ELEVATION D

ABOUT THE CHARLOTTE

The Charlotte plan greets guests with a dramatic two-story entry and a formal living room, which can be optioned as a dining room or private study. The main floor also offers an expansive family room with optional fireplace and an inviting kitchen with center island, walk-in pantry, breakfast nook and optional gourmet features. Upstairs, you'll find a relaxing master suite with an oversized walk-in closet. A finished basement is available.

COMMUNITY LOCATION:

Scenic Mountain | 7300 West 13483 South | Herriman, UT 84096 | 801.207.9968

*This information is presented for education purposes only. The HERS index for a confirmed rating will be determined by a third-party HERS rater based on data gathered from on-site observations and, if required, testing of rated features for a home as featured, optioned, located, oriented and/or built.

+Standard new home is based on the RESNET® Reference Home definition with a HERS® index of 100 (based on the 2006 International Energy Conservation Code).

++Typical resale home is based on the U.S. Department of Energy definition with a HERS® index of 130.

^RESNET® has developed the HERS® index to indicate the comparative efficiencies of homes. It is no guarantee that energy efficiencies will be achieved.

Floor plans and renderings are conceptual drawings and may vary from actual plans and homes as built. Options and features may not be available on all homes and are subject to change without notice. Actual homes may vary from photos and/or drawings which show upgraded landscaping and may not represent the lowest-priced homes in the community. Features may include optional upgrades and may not be available on all homes. Square footage numbers are approximate and are subject to change without notice. Prices, specifications and availability subject to change without notice. ©2018 Richmond American Homes, Richmond American Homes of Utah, Inc. (866-400-4131). 12/7/2018



ELEVATION A



ELEVATION B



ELEVATION C

