

THE JONQUIL

Approx. 1,250 sq. ft. | 1 story | 2-3 bedrooms | 2-car garage | Plan #W925



ELEVATION C

ABOUT THE JONQUIL

The Jonquil offers a bright and open single-story layout. At the heart of the floor plan, an inviting kitchen overlooks a great room, boasting access to an optional covered patio via center-meet sliding doors. Beyond the kitchen, a generous master suite is set apart from a secondary bedroom for added privacy, and includes a private bath and roomy walk-in closet. You'll also love a versatile flex room, which can be optioned as an extra bedroom. An alternate kitchen layout and optional 3-car garage are also available.



ELEVATION A



ELEVATION B

COMMUNITY LOCATION:

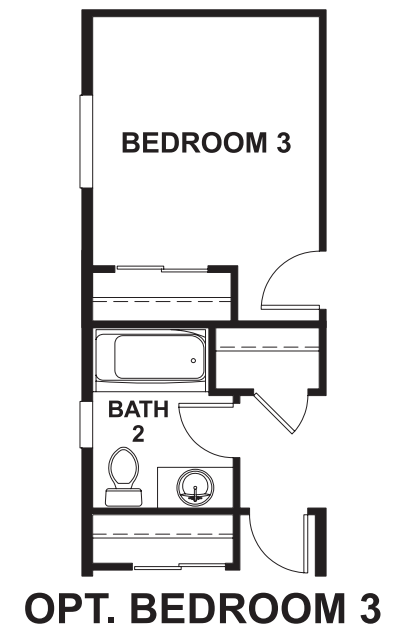
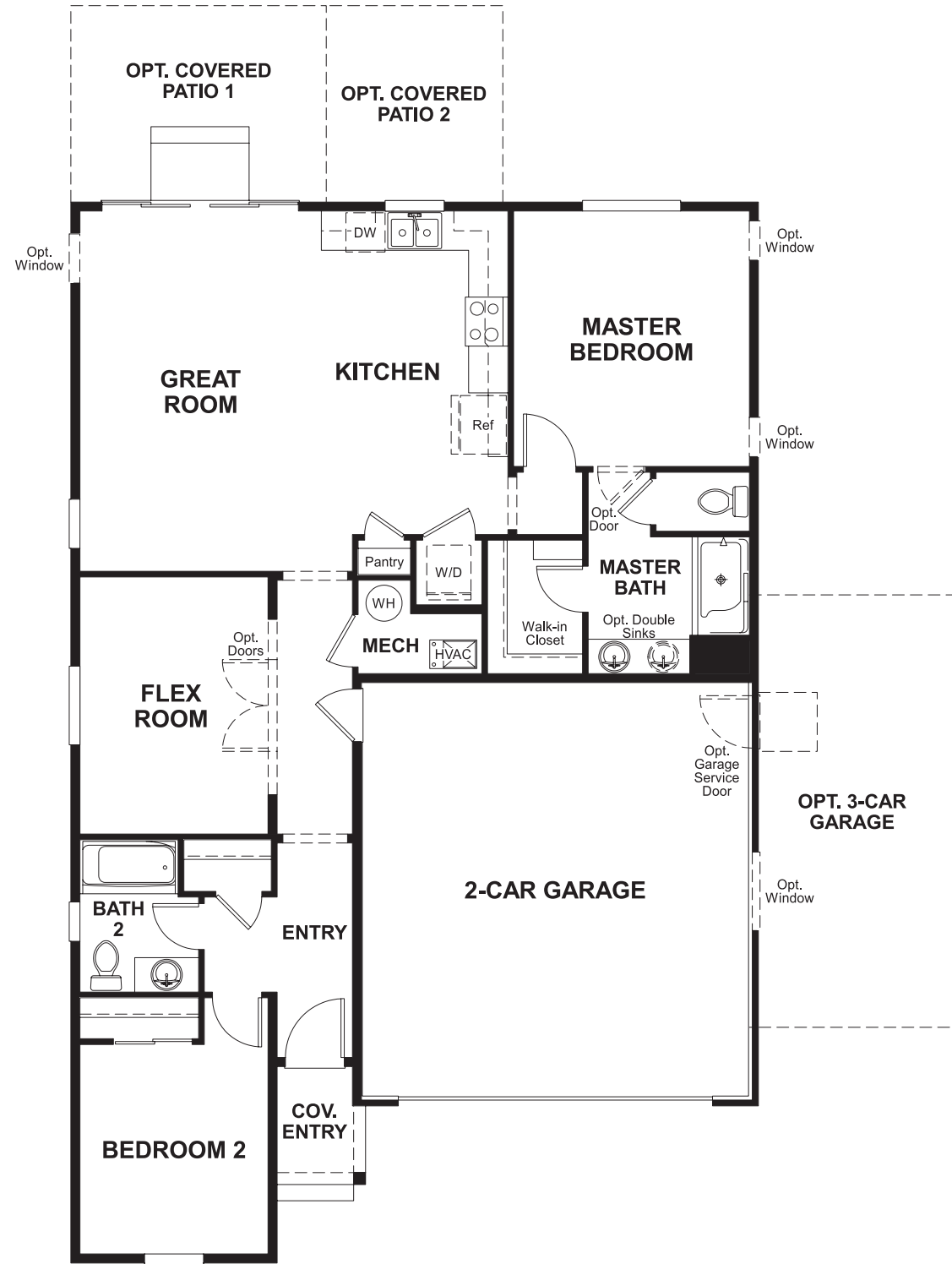
Seasons at Kenley Park | 83rd Avenue North East & 75th Street North East | Marysville, WA 98270 | **360.529.4666**



Floor plans and renderings are conceptual drawings and may vary from actual plans and homes as built. Options and features may not be available on all homes and are subject to change without notice. Actual homes may vary from photos and/or drawings which show upgraded landscaping and may not represent the lowest-priced homes in the community. Features may include optional upgrades and may not be available on all homes. Square footage numbers are approximate and are subject to change without notice. Prices, specifications and availability subject to change without notice. ©2019 Richmond American Homes, Richmond American Homes of Washington, Inc. 3/11/2019

MAIN FLOOR

MAIN FLOOR OPTIONS



Floor plans and renderings are conceptual drawings and may vary from actual plans and homes as built. Options and features may not be available on all homes and are subject to change without notice. Actual homes may vary from photos and/or drawings which show upgraded landscaping and may not represent the lowest-priced homes in the community. Features may include optional upgrades and may not be available on all homes. Square footage numbers are approximate and are subject to change without notice. Prices, specifications and availability subject to change without notice. ©2019 Richmond American Homes, Richmond American Homes of Washington, Inc. 3/11/2019

Floor plans and renderings are conceptual drawings and may vary from actual plans and homes as built. Options and features may not be available on all homes and are subject to change without notice. Actual homes may vary from photos and/or drawings which show upgraded landscaping and may not represent the lowest-priced homes in the community. Features may include optional upgrades and may not be available on all homes. Square footage numbers are approximate and are subject to change without notice. Prices, specifications and availability subject to change without notice. ©2019 Richmond American Homes, Richmond American Homes of Washington, Inc. 3/11/2019