



ELEVATION C

**ABOUT THE PAIGE**

The appealing Paige floor plan offers an inviting open layout with a great room, a dining nook and a large kitchen, complete with a walk-in pantry and a center island. The master suite is adjacent, and features a generous walk-in closet and a private bath with dual sinks, a shower and a separate soaking tub. Toward the front of this ranch-style plan, you'll find two bedrooms, a full bath and a private study. Exciting personalization options include a deluxe master bath and a covered patio. Seeking more sleeping space? Choose a fourth bedroom in lieu of the flex room, and a fifth bedroom in place of the tandem garage.



**COMMUNITY LOCATION:**

Primrose at Park Place | 3174 East Pastime Street | Ontario, CA 91762 | 909.942.6783

\*This information is presented for education purposes only. The HERS index for a confirmed rating will be determined by a third-party HERS rater based on data gathered from on-site observations and, if required, testing of rated features for a home as featured, optioned, located, oriented and/or built.

+Standard new home is based on the RESNET® Reference Home definition with a HERS® index of 100 (based on the 2006 International Energy Conservation Code).

++Typical resale home is based on the U.S. Department of Energy definition with a HERS® index of 130.

^RESNET® has developed the HERS® index to indicate the comparative efficiencies of homes. It is no guarantee that energy efficiencies will be achieved.

Floorplans and renderings are conceptual drawings and may vary from actual plans and homes as built. Options and features may not be available on all homes and are subject to change without notice. Actual homes may vary from photos and/or drawings which show upgraded landscaping and may not represent the lowest-priced homes in the community. Features may include optional upgrades and may not be available on all homes. Square footage numbers are approximate and are subject to change without notice. Prices, specifications and availability subject to change without notice. ©2019 Richmond American Homes, Richmond American Homes of Virginia, Inc. 6/03/2019



ELEVATION A

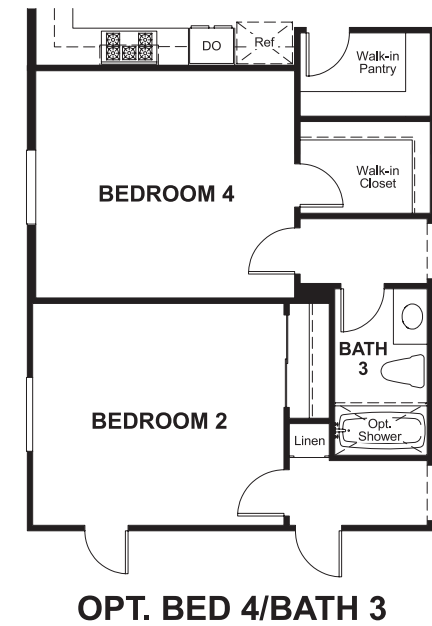
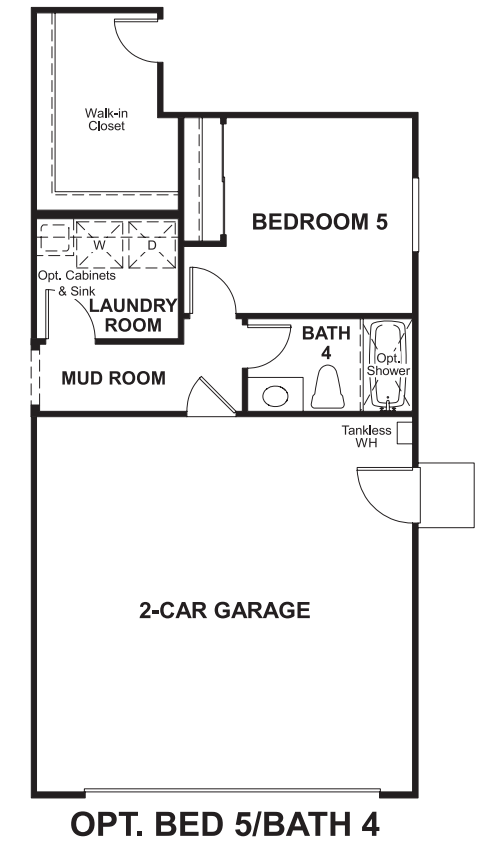
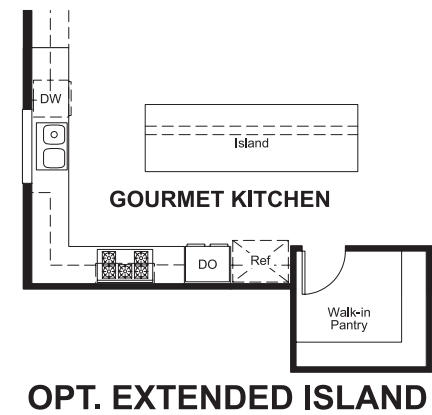
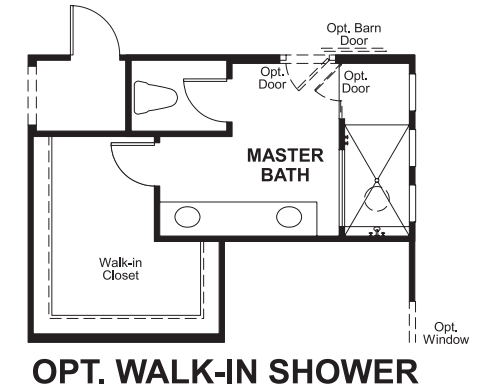
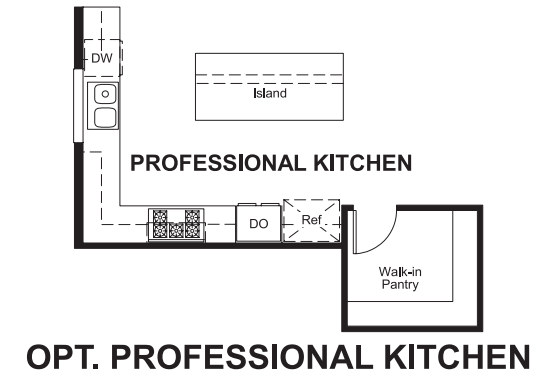


ELEVATION B



MAIN FLOOR

MAIN FLOOR OPTIONS



THIS PLAN'S PROJECTED **HERS® INDEX = 40\***  
 Projected Rating Based on Plans – Field Confirmation required

**How does this floor plan rate?**  
 Take a look: **100** = Standard new home+ **130** = Typical resale Home\*\*  
 The lower number, the better! Refer to the RESNET® HERS index brochure or go to [www.RESNET.us](http://www.RESNET.us) and [www.HERSindex.com](http://www.HERSindex.com)

**What's a HERS® Index?** HERS stands for Home Energy Rating System, a system created by RESNET® to measure home energy efficiency. A Projected HERS index or rating is a computer simulation performed prior to construction by a third-party HERS rater using RESNET-accredited rating software, rated feature and specification data derived from home plans, features and specifications, and other data selected or assumed by the rater. The projected HERS index is approximate and is subject to change without notice. Actual results will vary.