



ELEVATION C

ABOUT THE DOMINIC

The versatile Dominic floor plan offers ample living space and luxurious features. This ranch-style residence showcases an open layout with a great room, a dining nook, a private study and a large kitchen with dual walk-in pantries and a center island. The master suite is adjacent, and features an oversized walk-in closet and an attached bath. You’ll also find two bedrooms with walk-in closets, a teen room and a full bath. Personalization options include a dining room in lieu of the study, a fourth bedroom in place of the teen room, a walk-in shower at the master bath, and an extended covered patio.



COMMUNITY LOCATION:


Primrose at Park Place | 3174 East Pastime Street | Ontario, CA 91762 | 909.942.6783

*This information is presented for education purposes only. The HERS index for a confirmed rating will be determined by a third-party HERS rater based on data gathered from on-site observations and, if required, testing of rated features for a home as featured, optioned, located, oriented and/or built.

+Standard new home is based on the RESNET® Reference Home definition with a HERS® index of 100 (based on the 2006 International Energy Conservation Code).

++Typical resale home is based on the U.S. Department of Energy definition with a HERS® index of 130.

^RESNET® has developed the HERS® index to indicate the comparative efficiencies of homes. It is no guarantee that energy efficiencies will be achieved.



EQUAL HOUSING OPPORTUNITY

Floorplans and renderings are conceptual drawings and may vary from actual plans and homes as built. Options and features may not be available on all homes and are subject to change without notice. Actual homes may vary from photos and/or drawings which show upgraded landscaping and may not represent the lowest-priced homes in the community. Features may include optional upgrades and may not be available on all homes. Square footage numbers are approximate and are subject to change without notice. Prices, specifications and availability subject to change without notice.©2019 Richmond American Homes, Richmond American Homes of Virginia, Inc. 6/03/2019



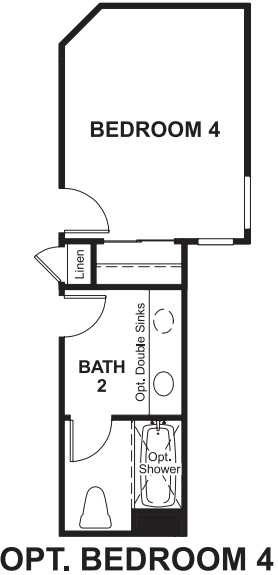
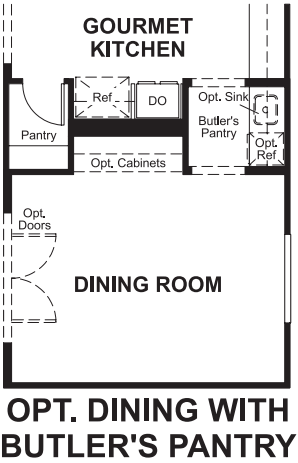
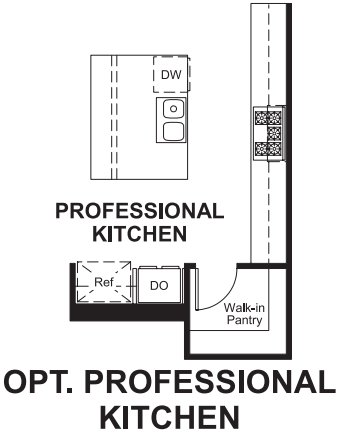
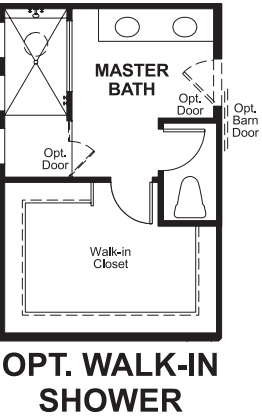
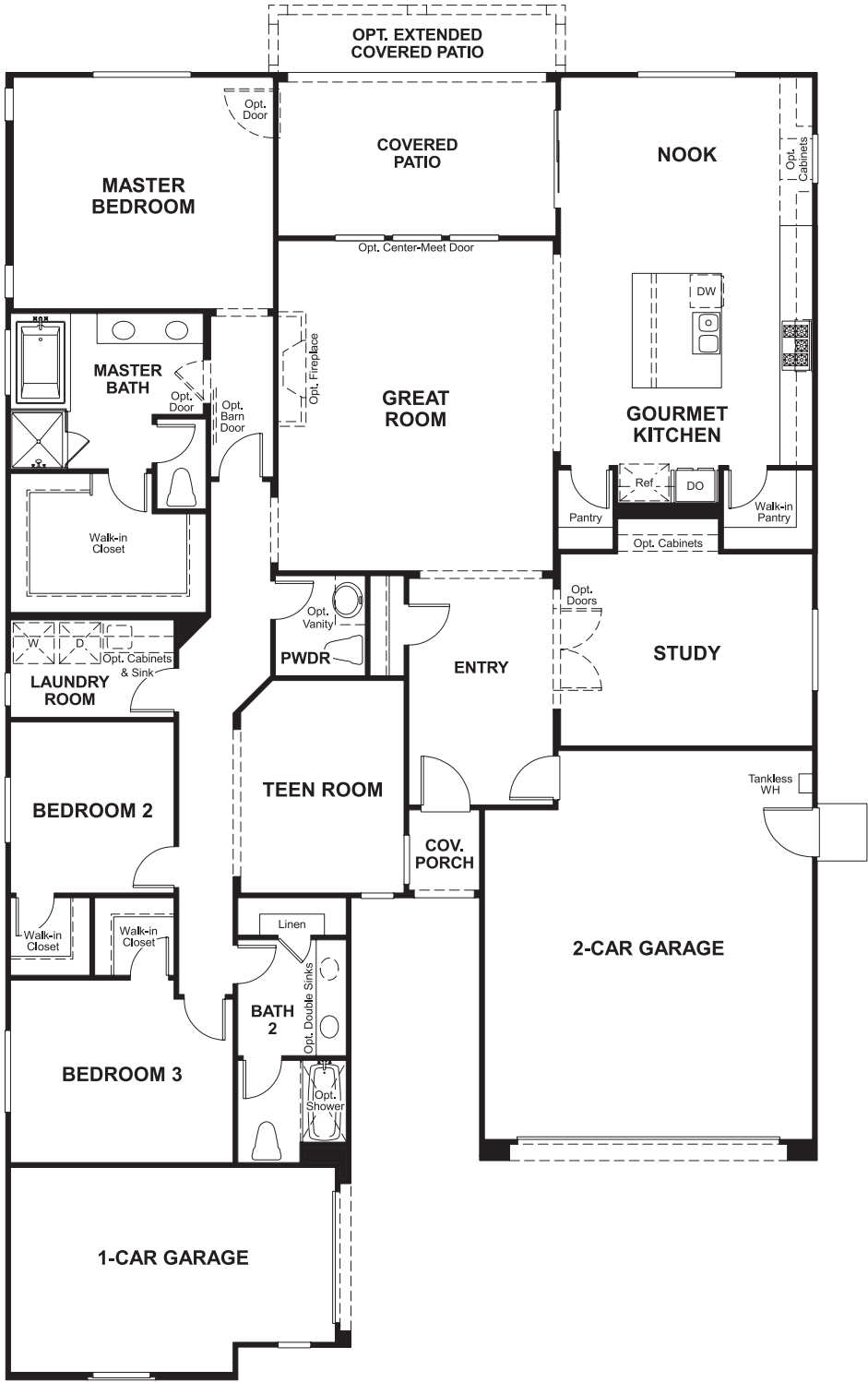
ELEVATION A



ELEVATION B

MAIN FLOOR

MAIN FLOOR OPTIONS



THIS PLAN'S PROJECTED
HERS® INDEX = 42*
Projected Rating Based on Plans – Field Confirmation required

How does this floor plan rate?
Take a look: **100** = Standard new home+ **130** = Typical resale Home**
The lower number, the better! Refer to the RESNET® HERS index brochure or go to www.RESNET.us and www.HERSindex.com

What's a HERS® Index? HERS stands for Home Energy Rating System, a system created by RESNET® to measure home energy efficiency.^
A Projected HERS index or rating is a computer simulation performed prior to construction by a third-party HERS rater using RESNET-accredited rating software, rated feature and specification data derived from home plans, features and specifications, and other data selected or assumed by the rater. The projected HERS index is approximate and is subject to change without notice. Actual results will vary.