

# THE TEAGAN

Approx. 2,920 sq. ft. | 2 stories | 4-5 bedrooms | 3-car garage | Plan #S560



ELEVATION C

## ABOUT THE TEAGAN

Luxury options make the Teagan floor plan a standout. The main-floor is centered around a spacious great room, which flows into a dining area and a kitchen with a walk-in pantry and a convenient center island. You'll also find a living room that can be optioned as a study or a dining room, and a bedroom and a bath on this floor. The impressive master suite is upstairs, and showcases a walk-in closet and a private bath with dual sinks, separate shower and soaking tub or optional walk in shower. For additional space, choose to extend the suite by optioning the fourth bedroom as a master retreat. Two bedrooms, a laundry and a bath round out the upper floor. Additional options include a covered patio, gourmet or gourmet lite features in the kitchen and a main-floor bonus room. A 3-car garage is included!

### COMMUNITY LOCATION:

Vaquero at Audie Murphy Ranch | 24548 Division Drive | Menifee, CA 92584 | **951.672.3581**

### HOME GALLERY LOCATION:

Southern California Home Gallery™ | 5171 California Avenue, Suite 110 | Irvine, CA 92617 | **909.579.3288**

\*This information is presented for education purposes only. The HERS index for a confirmed rating will be determined by a third-party HERS rater based on data gathered from on-site observations and, if required, testing of rated features for a home as featured, optioned, located, oriented and/or built.

+Standard new home is based on the RESNET® Reference Home definition with a HERS® index of 100 (based on the 2006 International Energy Conservation Code).

++Typical resale home is based on the U.S. Department of Energy definition with a HERS® index of 130.

^RESNET® has developed the HERS® index to indicate the comparative efficiencies of homes. It is no guarantee that energy efficiencies will be achieved.



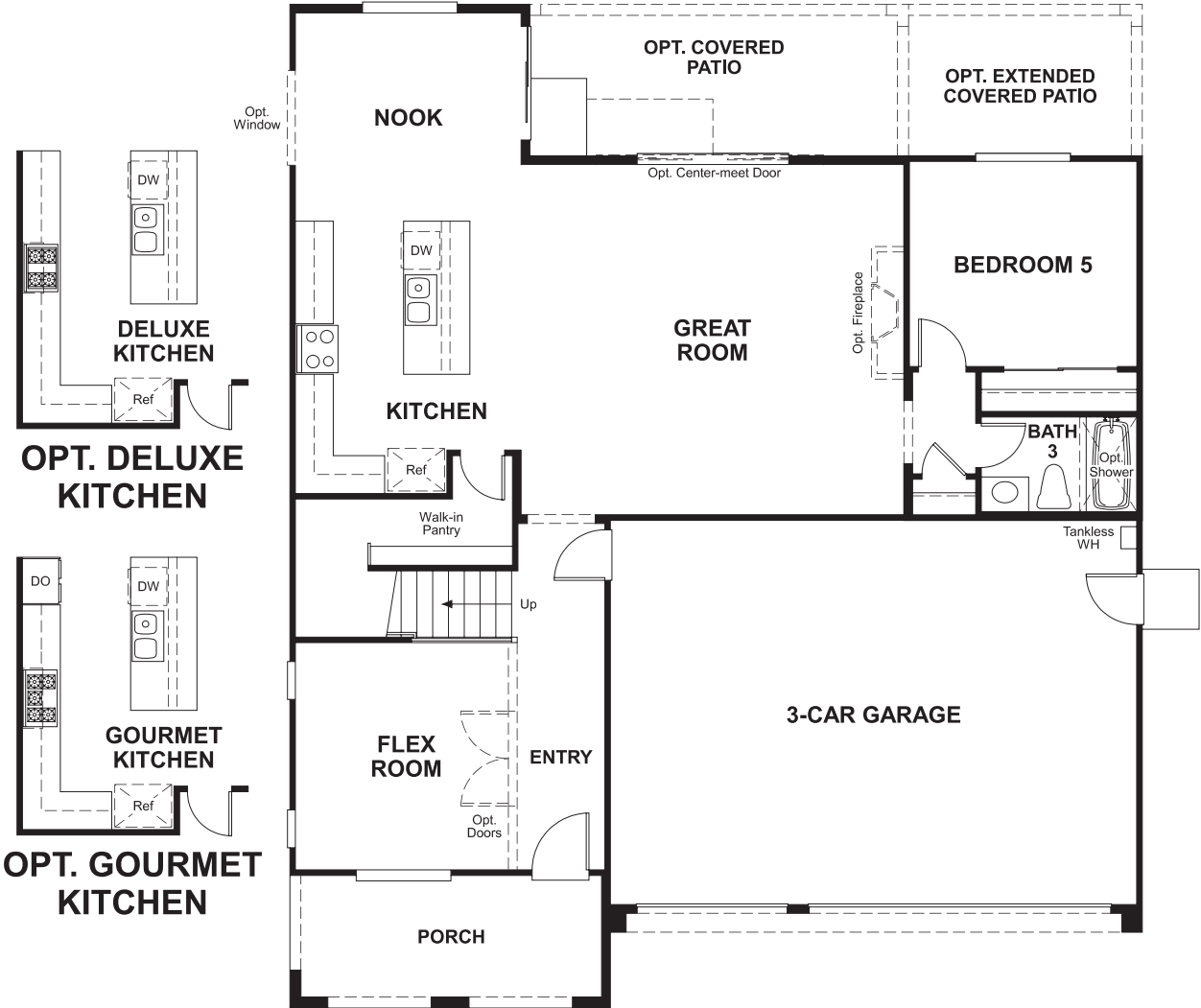
ELEVATION A



ELEVATION B

Floor plans and renderings are conceptual drawings and may vary from actual plans and homes as built. Options and features may not be available on all homes and are subject to change without notice. Actual homes may vary from photos and/or drawings which show upgraded landscaping and may not represent the lowest-priced homes in the community. Features may include optional upgrades and may not be available on all homes. Square footage numbers are approximate and are subject to change without notice. Prices, specifications and availability subject to change without notice. ©2020 Richmond American Homes, Richmond American Homes of Maryland, Inc., California Bureau of Real Estate – Real Estate Broker, Corporation License Number 01842595. 3/16/2020

MAIN FLOOR



SECOND FLOOR



THIS PLAN'S PROJECTED  
**HERS® INDEX = 47\***  
Projected Rating Based on Plans – Field Confirmation required

**How does this floor plan rate?**  
Take a look: **100** = Standard new home+ **130** = Typical resale Home++  
The lower number, the better! Refer to the RESNET® HERS index brochure or go to [www.RESNET.us](http://www.RESNET.us) and [www.HERSindex.com](http://www.HERSindex.com)

**What's a HERS® Index?** HERS stands for Home Energy Rating System, a system created by RESNET® to measure home energy efficiency.^  
A Projected HERS index or rating is a computer simulation performed prior to construction by a third-party HERS rater using RESNET-accredited rating software, rated feature and specification data derived from home plans, features and specifications, and other data selected or assumed by the rater. The projected HERS index is approximate and is subject to change without notice. Actual results will vary.