

# THE JONQUIL

Approx. 1,240 sq. ft. | 1 story | 3 bedrooms | 2- to 3-car garage | Plan #J925



ELEVATION M

## ABOUT THE JONQUIL

The Jonquil offers a bright and open ranch-style layout. At the heart of the floor plan, an inviting kitchen overlooks a great room, boasting access to a patio via center-meet sliding doors. Beyond the kitchen, a generous master suite is set apart from a secondary bedroom for added privacy, and includes a private bath and generous walk-in closet. Additional options: alternate kitchen layout with island, 3-car garage, covered patio.

### HOME GALLERY LOCATION:

Jacksonville Home Gallery™ | 10255 Fortune Parkway, Suite 150 | Jacksonville, FL 32256 | **904.541.2555**



Floor plans and renderings are conceptual drawings and may vary from actual plans and homes as built. Options and features may not be available on all homes and are subject to change without notice. Actual homes may vary from photos and/or drawings which show upgraded landscaping and may not represent the lowest-priced homes in the community. Features may include optional upgrades and may not be available on all homes. Square footage numbers are approximate and are subject to change without notice. ©2020 Richmond American Homes, Richmond American Homes of Florida, LP, CBC1257429 5/29/2020



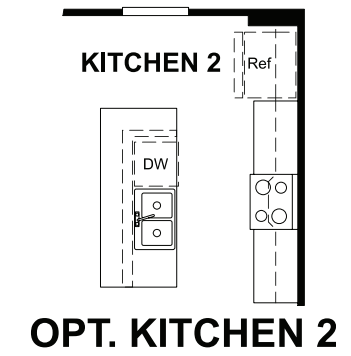
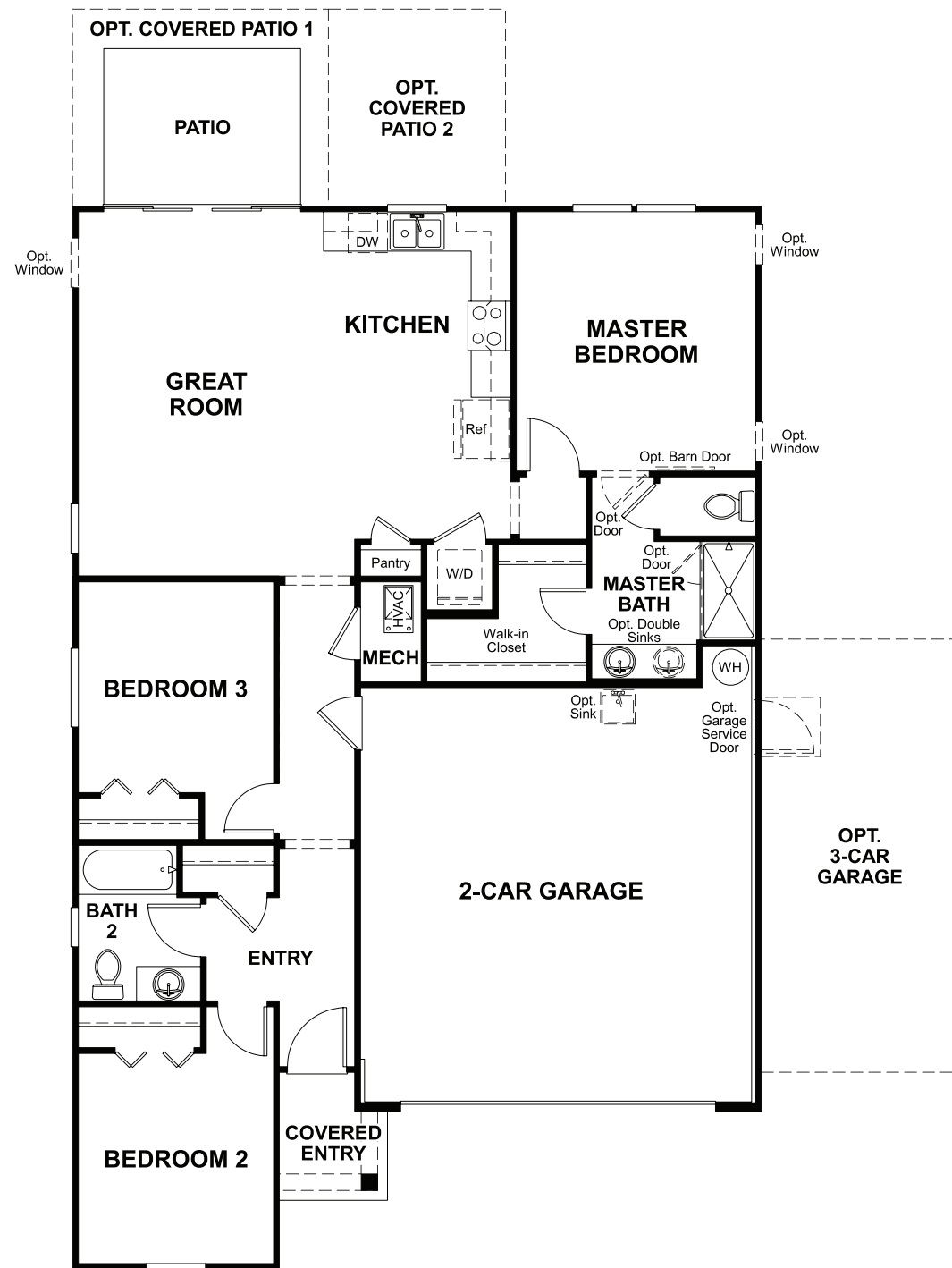
ELEVATION K



ELEVATION L

MAIN FLOOR

MAIN FLOOR OPTIONS



Floor plans and renderings are conceptual drawings and may vary from actual plans and homes as built. Options and features may not be available on all homes and are subject to change without notice. Actual homes may vary from photos and/or drawings which show upgraded landscaping and may not represent the lowest-priced homes in the community. Features may include optional upgrades and may not be available on all homes. Square footage numbers are approximate and are subject to change without notice. Prices, specifications and availability subject to change without notice. ©2020 Richmond American Homes, Richmond American Homes of Florida, LP, CBC1257429 5/29/2020

Floor plans and renderings are conceptual drawings and may vary from actual plans and homes as built. Options and features may not be available on all homes and are subject to change without notice. Actual homes may vary from photos and/or drawings which show upgraded landscaping and may not represent the lowest-priced homes in the community. Features may include optional upgrades and may not be available on all homes. Square footage numbers are approximate and are subject to change without notice. Prices, specifications and availability subject to change without notice. ©2020 Richmond American Homes, Richmond American Homes of Florida, LP, CBC1257429 5/29/2020