

THE JANETTE

Approx. 2,550 sq. ft. | 1 story | 3-4 bedrooms | 2- to 3-car garage | Plan #N814



ELEVATION D

ABOUT THE JANETTE

This exceptional ranch-style plan boasts a private study, a large great room, an open dining area and a well-appointed kitchen with a center island and walk-in pantry. The master suite is separated from the other bedrooms for privacy, and includes a luxurious bath with dual vanities and a separate tub and shower, as well as a spacious walk-in closet. Thoughtful details like the roomy storage closet off the entry, the centrally located laundry, and a mudroom and powder room off the garage add comfort and convenience. Personalize with a covered patio, additional garage space, gourmet kitchen and more.

COMMUNITY LOCATION:

Piedmont at Vanden Estates | 124 Titus Way | Vacaville, CA 95687 | **707.229.7002**

HOME GALLERY LOCATION:

Northern California Home Gallery™ | One Harbor Center, Suite 150 | Suisun City, CA 94585 | **707.416.2800**

*This information is presented for education purposes only. The HERS index for a confirmed rating will be determined by a third-party HERS rater based on data gathered from on-site observations and, if required, testing of rated features for a home as featured, optioned, located, oriented and/or built.

+Standard new home is based on the RESNET® Reference Home definition with a HERS® index of 100 (based on the 2006 International Energy Conservation Code).

++Typical resale home is based on the U.S. Department of Energy definition with a HERS® index of 130.

^RESNET® has developed the HERS® index to indicate the comparative efficiencies of homes. It is no guarantee that energy efficiencies will be achieved.

Floor plans and renderings are conceptual drawings and may vary from actual plans and homes as built. Options and features may not be available on all homes and are subject to change without notice. Actual homes may vary from photos and/or drawings which show upgraded landscaping and may not represent the lowest-priced homes in the community. Features may include optional upgrades and may not be available on all homes. Square footage numbers are approximate and are subject to change without notice. ©2020 Richmond American Homes, Richmond American Homes of Maryland, Inc., California Bureau of Real Estate – Real Estate Broker, Corporation License Number 01842595. 4/8/2020



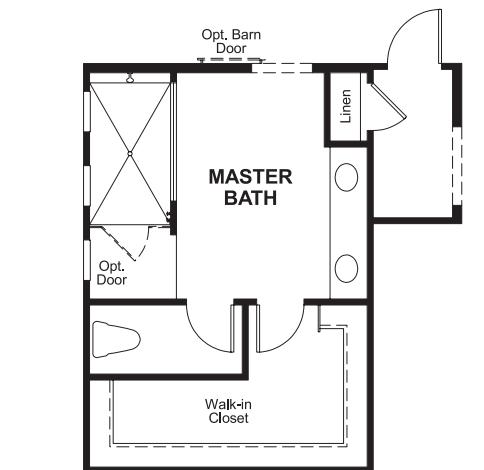
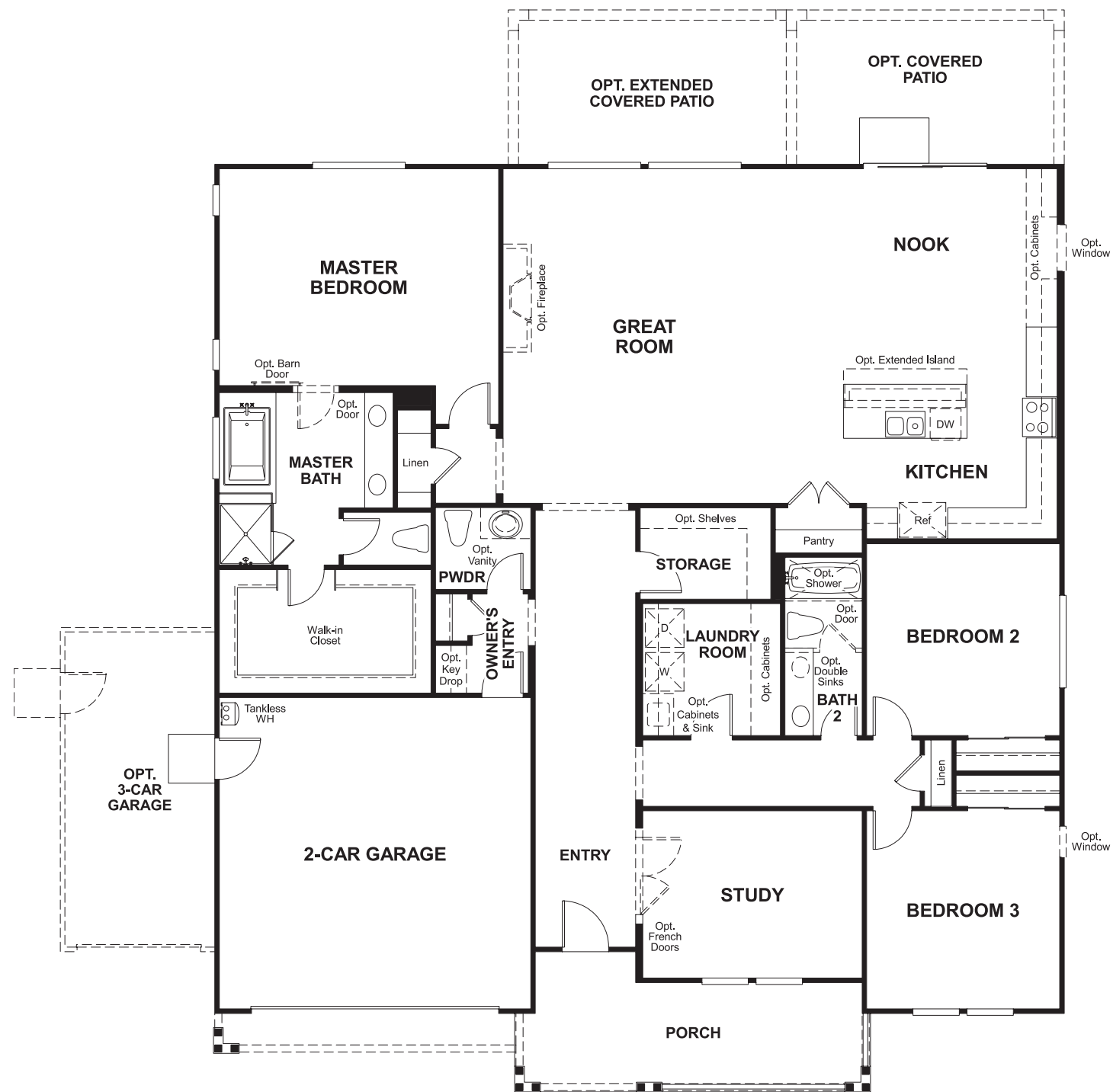
ELEVATION A



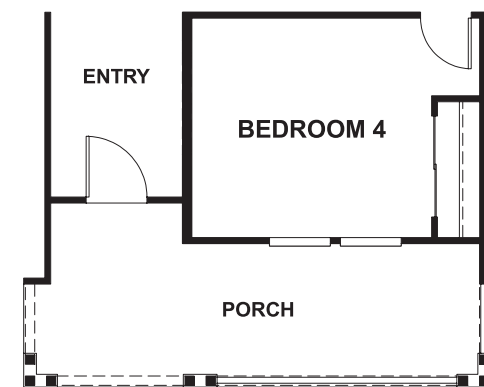
ELEVATION B

MAIN FLOOR

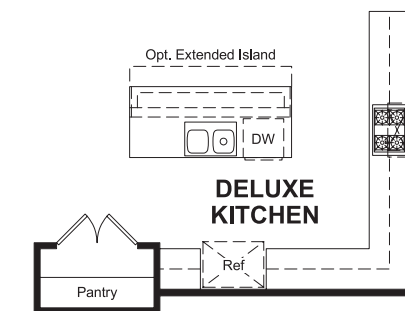
MAIN FLOOR OPTIONS



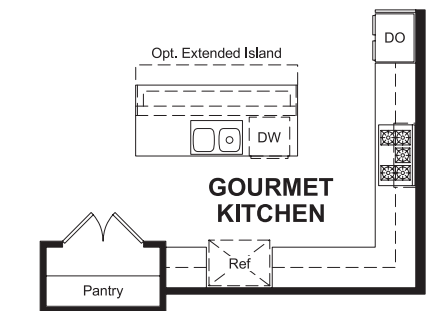
OPT. WALK-IN SHOWER AT MASTER BATH



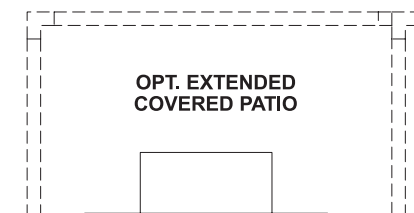
OPT. BED 4



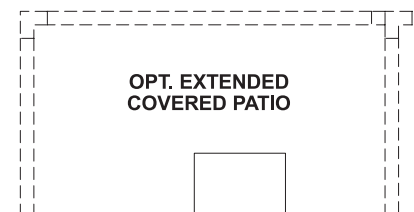
OPT. DELUXE KITCHEN



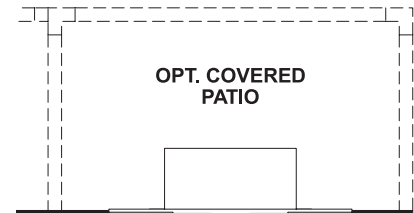
OPT. GOURMET KITCHEN



OPT. 12' CENTER-MEET DOOR AT GREAT ROOM



OPT. 8' SLIDING GLASS DOOR AT GREAT ROOM



OPT. 12' CENTER-MEET DOOR AT NOOK

THIS PLAN'S PROJECTED
HERS® INDEX = 44*
Projected Rating Based on Plans – Field Confirmation required

How does this floor plan rate?

Take a look: **100** = Standard new home* **130** = Typical resale Home**
The lower number, the better! Refer to the RESNET® HERS index brochure or go to www.RESNET.us and www.HERSindex.com

What's a HERS® Index? HERS stands for Home Energy Rating System, a system created by RESNET® to measure home energy efficiency.^\

A Projected HERS index or rating is a computer simulation performed prior to construction by a third-party HERS rater using RESNET-accredited rating software, rated feature and specification data derived from home plans, features and specifications, and other data selected or assumed by the rater. The projected HERS index is approximate and is subject to change without notice. Actual results will vary.