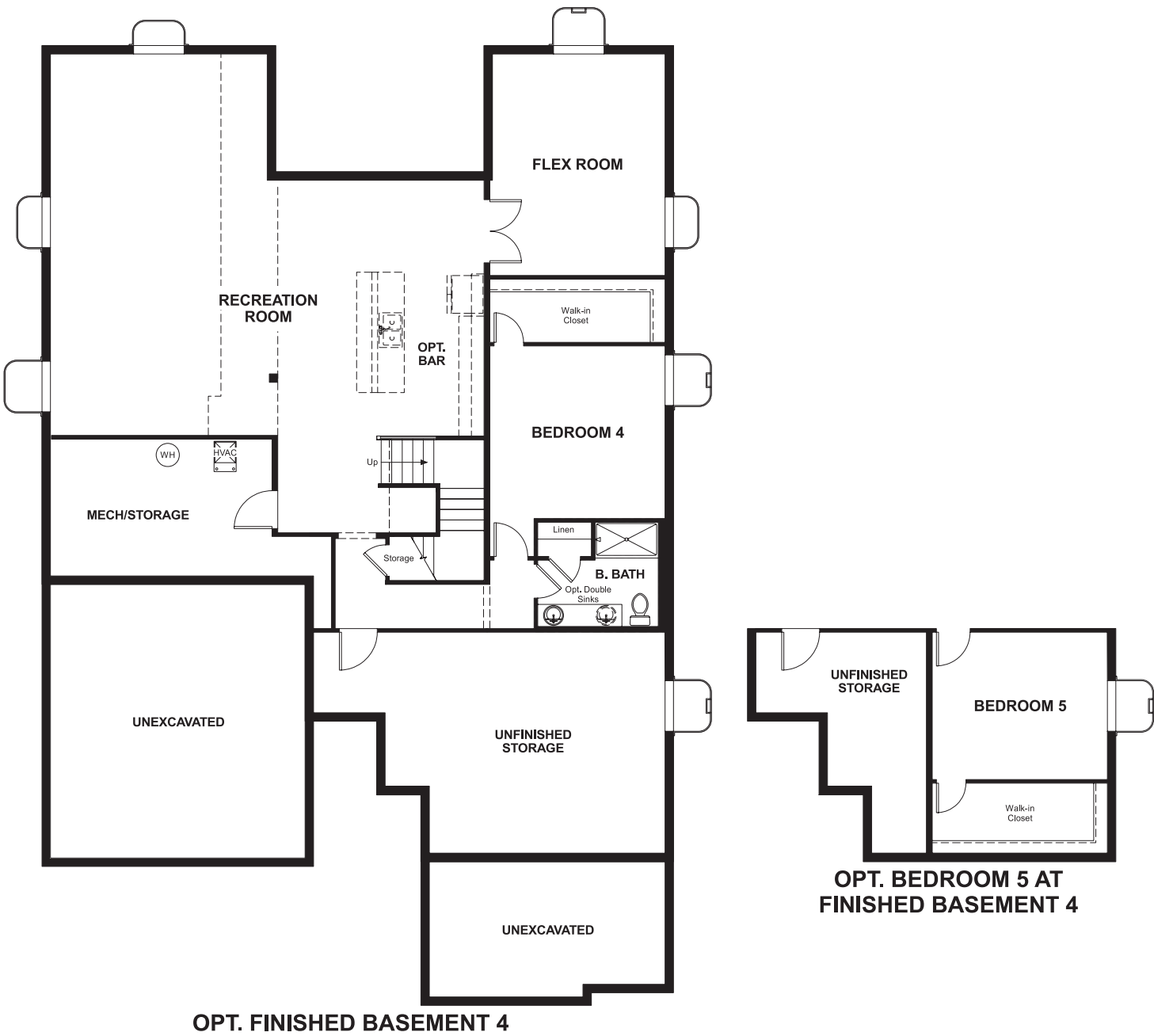


BASEMENT



COMMUNITY LOCATION:

Cliffrose at Homestead at Crystal Valley | 2627 Hillcroft Lane | Castle Rock, CO 80104 | 303.850.5750



Floor plans and renderings are conceptual drawings and may vary from actual plans and homes as built. Options and features may not be available on all homes and are subject to change without notice. Actual homes may vary from photos and/or drawings which show upgraded landscaping and may not represent the lowest-priced homes in the community. Features may include optional upgrades and may not be available on all homes. Square footage numbers are approximate and are subject to change without notice. Prices, specifications and availability subject to change without notice. ©2019 Richmond American Homes, Richmond American Homes of Colorado, Inc. 5/17/2019



ELEVATION C

ABOUT THE PINECREST

At the heart of the ranch-style Pinecrest plan is an expansive great room that overlooks a generous covered patio. An adjacent dining room flows into an inviting kitchen featuring a spacious island and walk-in pantry, and a private master suite boasts dual walk-in closets. You'll also appreciate convenient laundry and powder rooms, two additional bedrooms with a shared bath, and a quiet study. Make this home your own with an optional deluxe master bath, a guest suite with a living room, and a finished basement.



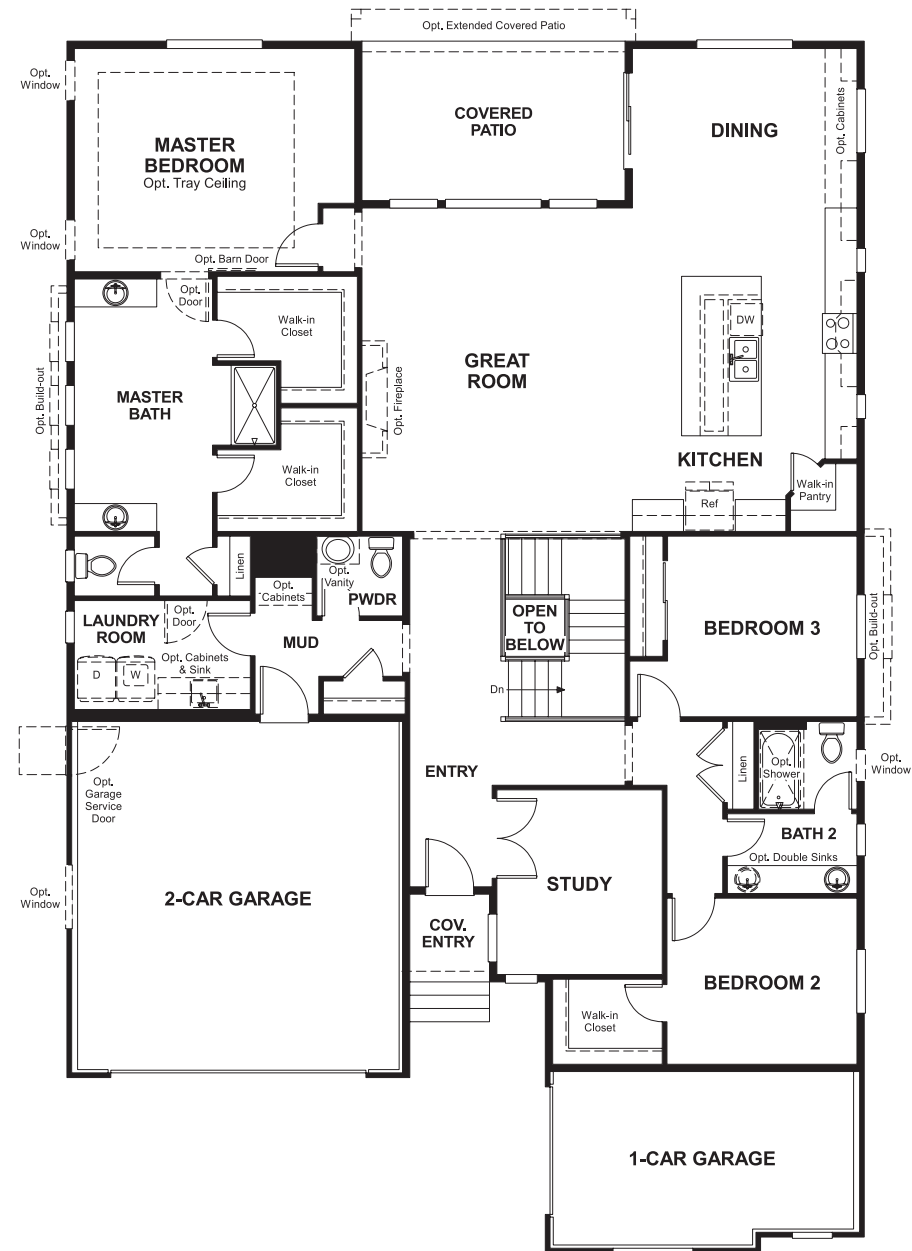
ELEVATION A



ELEVATION B

## MAIN FLOOR

## MAIN FLOOR OPTIONS



Floor plans and renderings are conceptual drawings and may vary from actual plans and homes as built. Options and features may not be available on all homes and are subject to change without notice. Actual homes may vary from photos and/or drawings which show upgraded landscaping and may not represent the lowest-priced homes in the community. Features may include optional upgrades and may not be available on all homes. Square footage numbers are approximate and are subject to change without notice. Prices, specifications and availability subject to change without notice. ©2019 Richmond American Homes, Richmond American Homes of Colorado, Inc. 5/17/2019

Floor plans and renderings are conceptual drawings and may vary from actual plans and homes as built. Options and features may not be available on all homes and are subject to change without notice. Actual homes may vary from photos and/or drawings which show upgraded landscaping and may not represent the lowest-priced homes in the community. Features may include optional upgrades and may not be available on all homes. Square footage numbers are approximate and are subject to change without notice. Prices, specifications and availability subject to change without notice. ©2019 Richmond American Homes, Richmond American Homes of Colorado, Inc. 5/17/2019