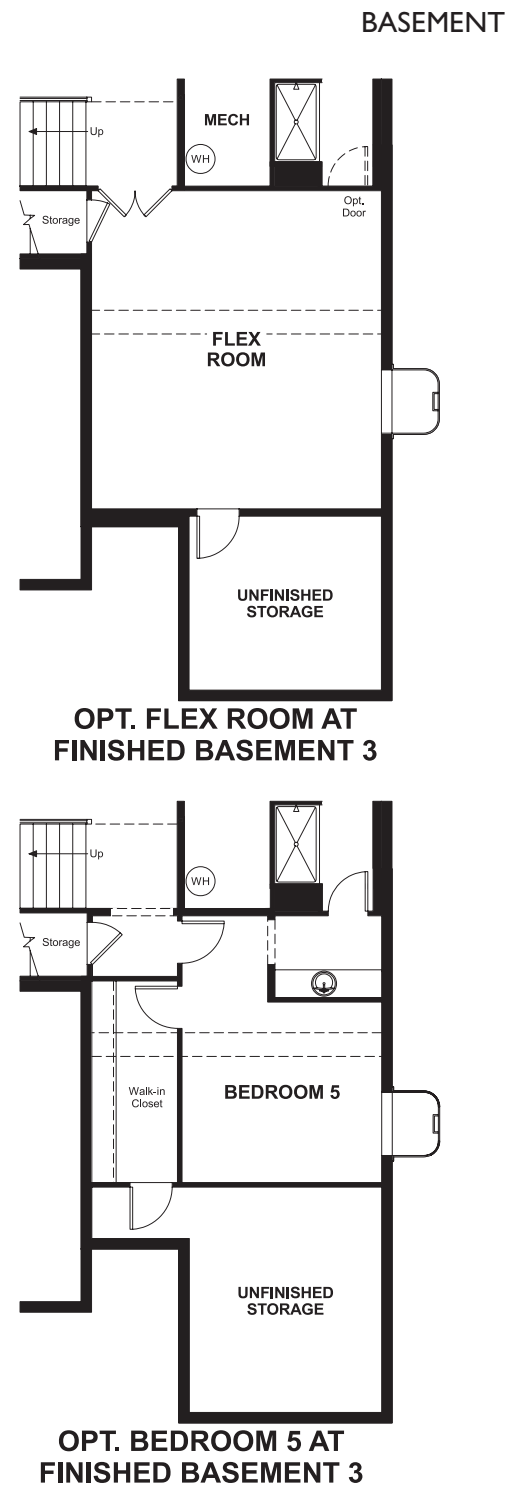
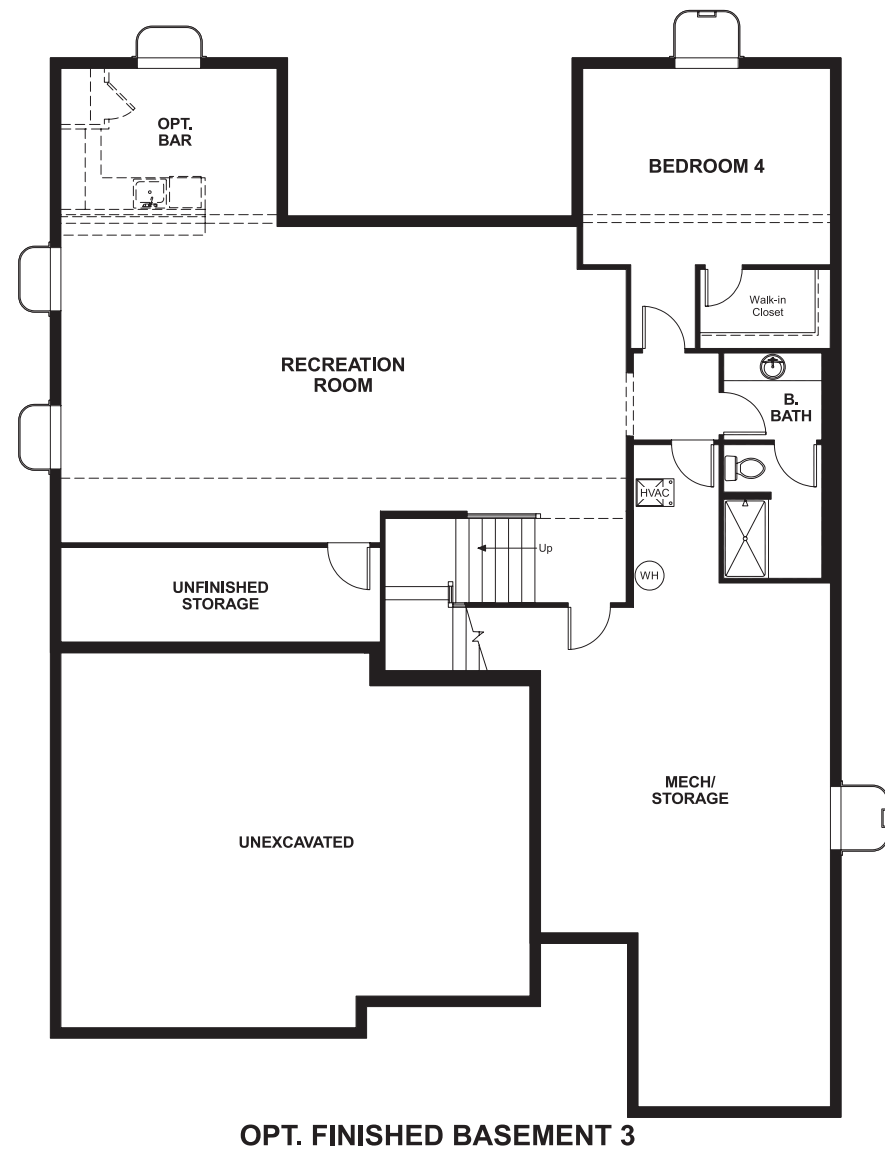


THE PATTERSON

Approx. 2,220 sq. ft. | 1 story | 2-5 bedrooms | 3-car garage | Plan #D851



ELEVATION C

ABOUT THE PATTERSON

The ranch-style Patterson plan greets guests with a charming covered entry, and continues to impress with a spacious great room, a well-appointed kitchen featuring a center island and nook, and a roomy covered patio. An elegant master suite boasts a private bath and expansive walk-in closet, and a second bedroom invites rest and relaxation. A laundry, mudroom and 3-car garage are also included. Personalize this plan with an optional gourmet kitchen, a third bedroom in lieu of the study and a finished basement with two additional bedrooms.



ELEVATION A



ELEVATION B

COMMUNITY LOCATION:

Cliffrose at Homestead at Crystal Valley | 2627 Hillcroft Lane | Castle Rock, CO 80104 | 303.850.5750



Floor plans and renderings are conceptual drawings and may vary from actual plans and homes as built. Options and features may not be available on all homes and are subject to change without notice. Actual homes may vary from photos and/or drawings which show upgraded landscaping and may not represent the lowest-priced homes in the community. Features may include optional upgrades and may not be available on all homes. Square footage numbers are approximate and are subject to change without notice. Prices, specifications and availability subject to change without notice. ©2019 Richmond American Homes, Richmond American Homes of Colorado, Inc. 5/17/2019

