



ELEVATION C

ABOUT THE DALEY

The two-story Daley floor plan offers thoughtful design and a variety of exciting personalization options. On the main floor, an airy layout showcases a dining nook, a great room and a kitchen with a convenient island. A covered patio is adjacent, and you'll also find a private study, a bedroom, a bath and a powder room on the first floor. Upstairs, the master suite offers an oversized walk-in closet and a private bath with dual sinks and a separate shower and soaking tub. Three additional bedrooms, two baths and a versatile loft space round out the residence. Personalize this plan with gourmet features in the kitchen, a formal dining room in lieu of the study, a sixth bedroom in place of the loft, or a walk-in shower at the master bath. Also includes a 3-car garage!

COMMUNITY LOCATION:


Valor at Audie Murphy Ranch | 29957 Urtica Court | Menifee, CA 92584 | **951.643.6118**

*This information is presented for education purposes only. The HERS index for a confirmed rating will be determined by a third-party HERS rater based on data gathered from on-site observations and, if required, testing of rated features for a home as featured, optioned, located, oriented and/or built.

+Standard new home is based on the RESNET® Reference Home definition with a HERS® index of 100 (based on the 2006 International Energy Conservation Code).

++Typical resale home is based on the U.S. Department of Energy definition with a HERS® index of 130.

^RESNET® has developed the HERS® index to indicate the comparative efficiencies of homes. It is no guarantee that energy efficiencies will be achieved.



Floor plans and renderings are conceptual drawings and may vary from actual plans and homes as built. Options and features may not be available on all homes and are subject to change without notice. Actual homes may vary from photos and/or drawings which show upgraded landscaping and may not represent the lowest-priced homes in the community. Features may include optional upgrades and may not be available on all homes. Square footage numbers are approximate and are subject to change without notice. ©2019 Richmond American Homes, Richmond American Homes of Maryland, Inc., California Bureau of Real Estate – Real Estate Broker, Corporation License Number 01842595. 10/17/2019

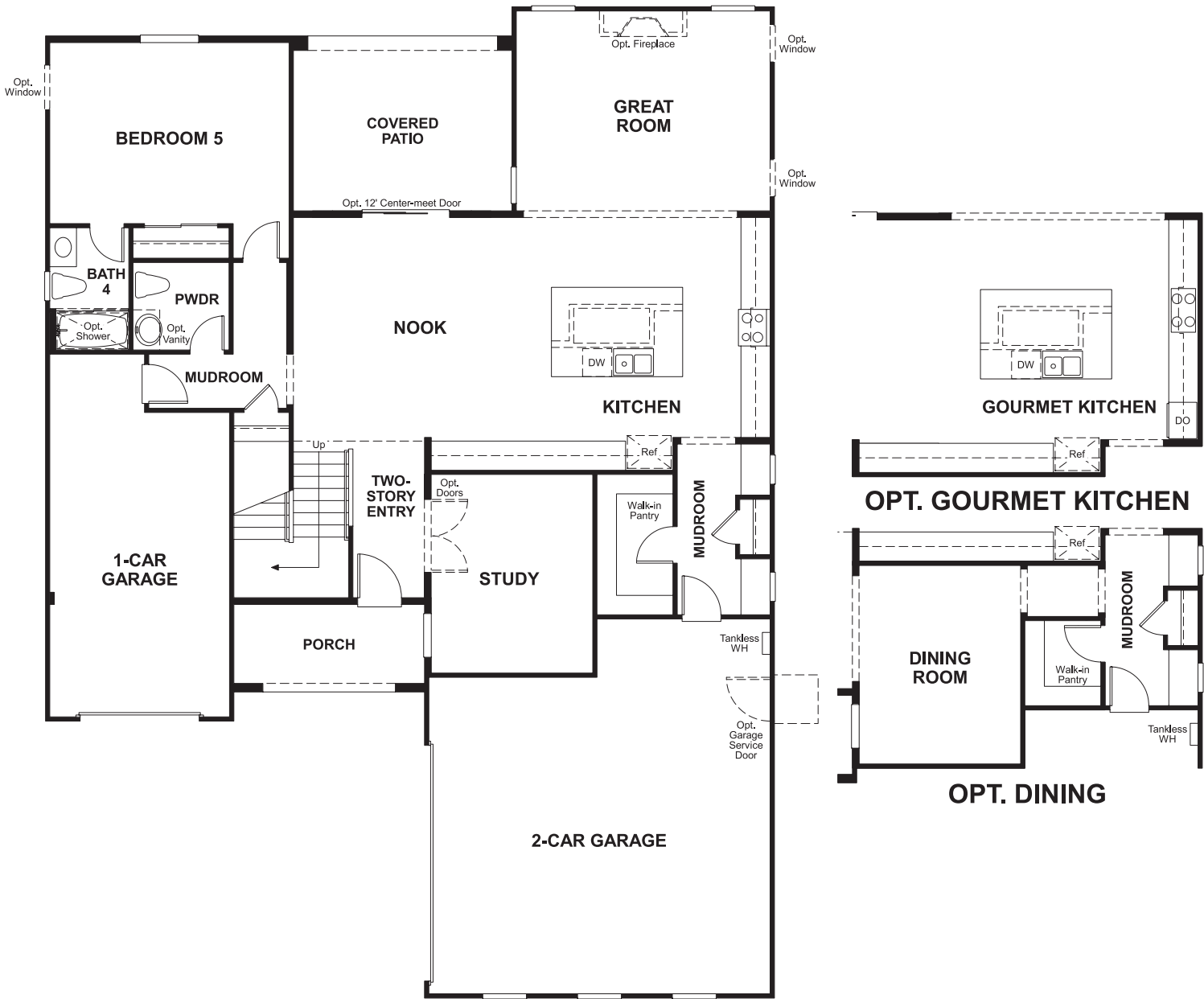


ELEVATION A

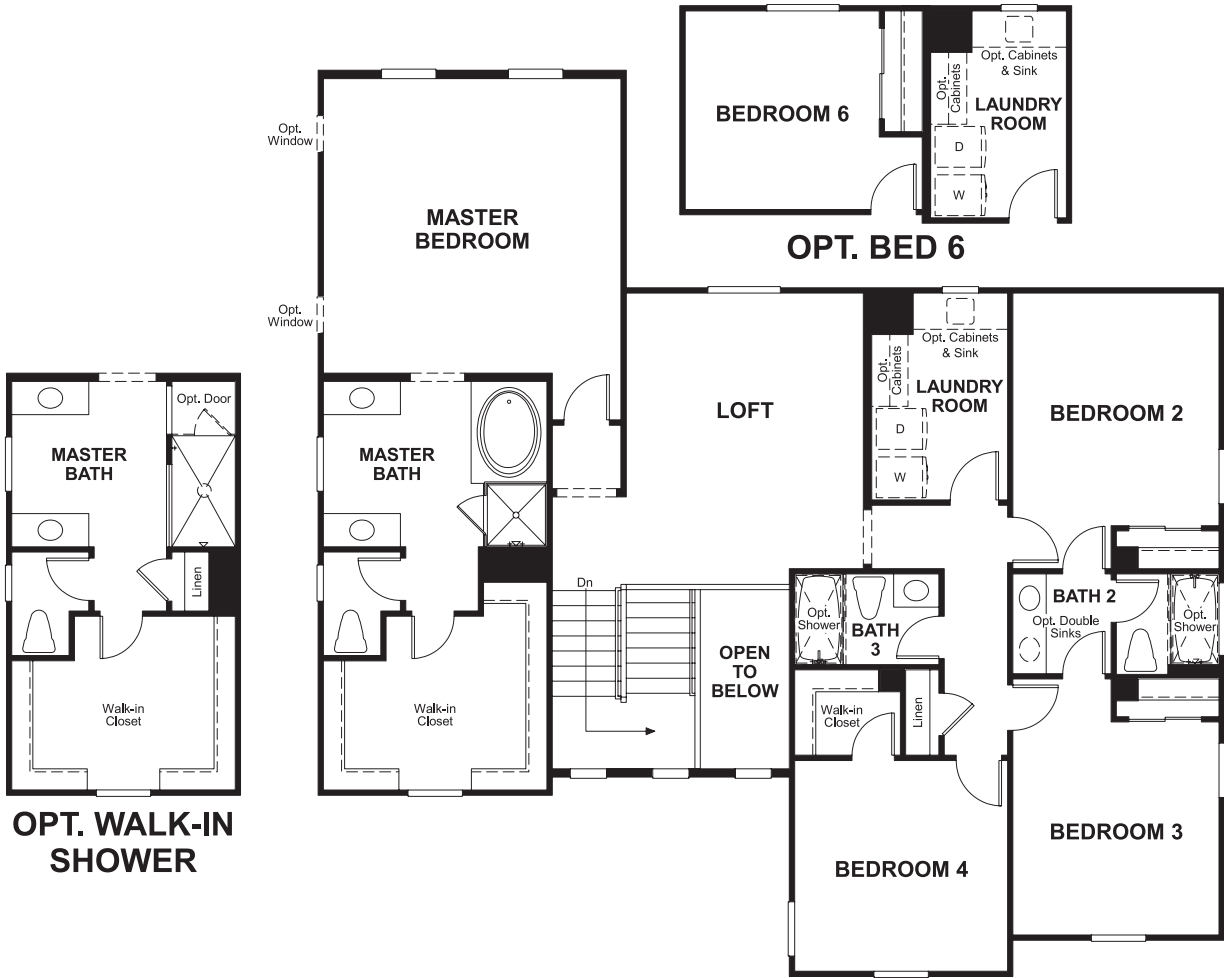


ELEVATION B

MAIN FLOOR
PRELIMINARY



SECOND FLOOR
PRELIMINARY



THIS PLAN'S PROJECTED
HERS® INDEX = 43*
Projected Rating Based on Plans – Field Confirmation required

How does this floor plan rate?
Take a look: **100** = Standard new home+ **130** = Typical resale Home++
The lower number, the better! Refer to the RESNET® HERS index brochure or go to www.RESNET.us and www.HERSindex.com

What's a HERS® Index? HERS stands for Home Energy Rating System, a system created by RESNET® to measure home energy efficiency.^
A Projected HERS index or rating is a computer simulation performed prior to construction by a third-party HERS rater using RESNET-accredited rating software, rated feature and specification data derived from home plans, features and specifications, and other data selected or assumed by the rater. The projected HERS index is approximate and is subject to change without notice. Actual results will vary.